

Milton Success Stories

The home comforts of "A Country Mile"

With the Christmas season quickly approaching, A Country Mile is decorated and set for the season. Proudly owned & operated by Kimberly and Glenn English for the past 6 1/2 years.

Kimberly has once again used her merchandising magic to showcase the 2002 Christmas merchandise. A Country Mile offers you two floors of unique gifts and high-quality pine and oak furniture. A warm country feeling surrounds you as you step into the store. The store is brimming with Christmas decorations, gift ideas and the aroma of mulled spice fills the air. In fact, every time you go into this beautiful store, you'll find something you've never noticed before.

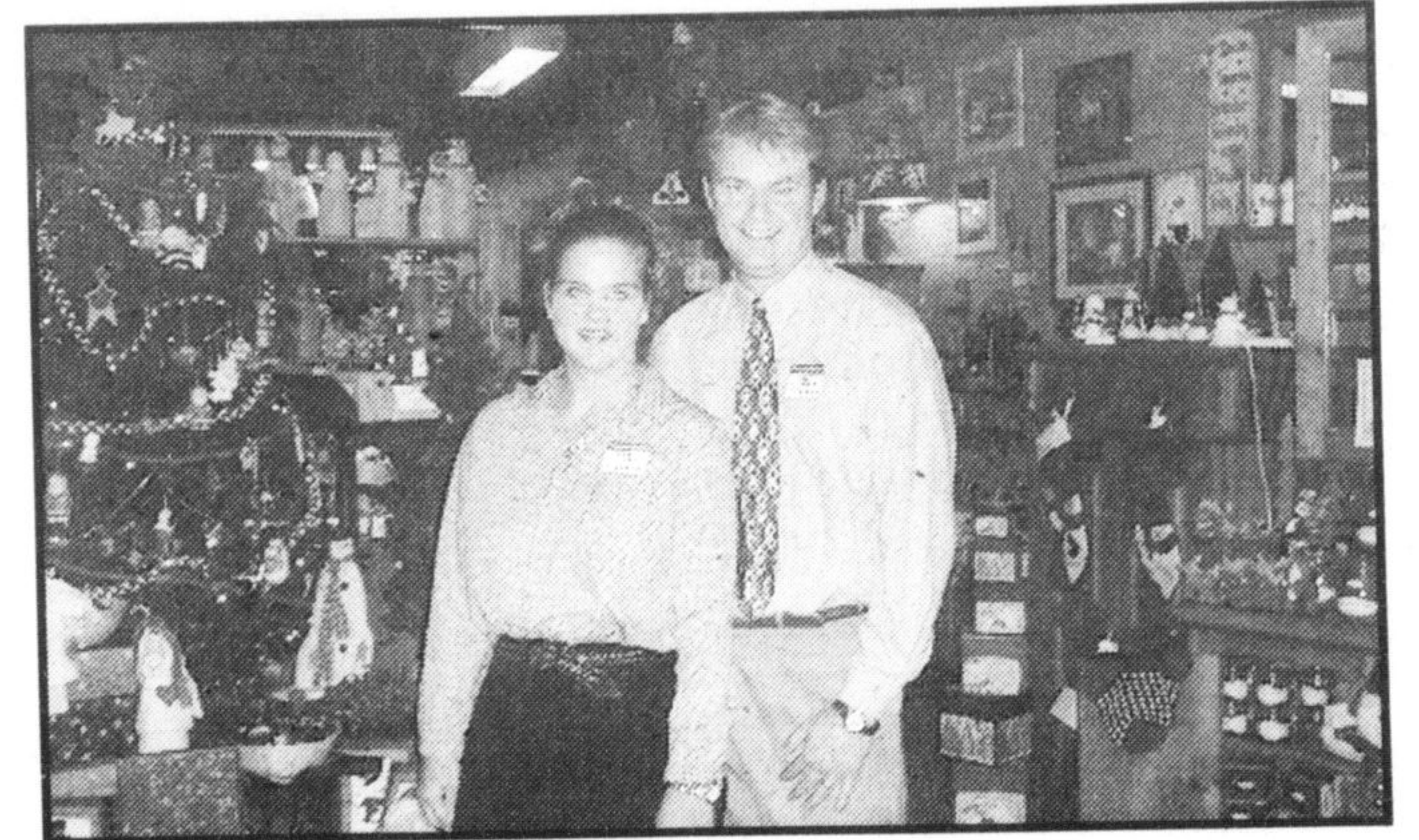
A Country Mile is currently operating 4 stores this holiday season. Milton location at 265 Main St, Carriage Square, & Burlington 518 Brant St. at Caroline are open year round, 7 days a week. Seasonal

locations which are now open until the end of December are in Square One Shopping Centre - Mississauga and Limeridge Mall in Hamilton. Every location has a bit of a twist so don't hesitate to visit more than one.

Kimberly and Glenn realize that customer loyalty is earned. Each visit to A Country Mile will be friendly, hassle free and full of great gift ideas for your home. We also offer a wide variety of quality pine and oak furniture. The couple believe that their "Keys to success" is in fact customer service, quality and value. These remain their primary focus.

A Country Mile - like a breath of fresh air. Always striving to have a "yes we can" attitude to all our customers requests. Returns are hassle free and custom orders are always welcome.

A Country Mile is participating once again in the annual United Way



Kimberly and Glenn English

Christmas House Tour which takes place this weekend on November 16.

Be sure not to miss A Country Mile's annual Christmas Open House. Join us Saturday, November 30th, 2002 from 9:30 - 6:00 at the Milton and Burlington locations.

Kimberly and Glenn would like to thank all of their Milton customers for their continued support & friendships given over the years.

A COUNTRY MILE
FURNITURE, HOME ACCENTS & GIFTS

Only **42 days** til
Christmas

- Christmas Decorations
- Country Collectibles
- Pine & Oak Furniture
- Candles & lots more



OPEN HOUSE
Saturday Nov. 30
• 9:30am-6:00pm •

265 Main St., Milton • 905-878-1070

**Increase
YOUR BUSTLINE!**


- exclusive to Herbal Magic
- naturally increases breast size
- no side effects
- herbal based, non addictive

20% OFF
Introductory Pack

Expires Dec 10/02. Cannot be used in conjunction with any other coupon.



Herbal Magic
Systems International
Weight Management and Nutrition Centres
www.herbalmagicsystems.com
15 Martin St. (Carriage Square) (905) 693-9594



DALA OPTICAL

- DESIGNER EYEWEAR
- CONTACT LENSES
- SPECIALS FOR CHILDREN AND SENIORS
- ON SITE REPAIRS
- ALL PRESCRIPTIONS AND DUPLICATIONS FILLED

1 HOUR SERVICE
on most single vision

EYE EXAMS ON PREMISES

LAB ON PREMISES

88 MAIN ST. E.
MILTON 905-878-0553
Always Fast Professional Service



*It's the Season...
with the Holiday
Season approaching...
Book Now for
your Christmas Party!*

Party, luncheon or dinner.
Private rooms for 15-40 people.
Customized menus.
Catering for all occasions.

*Fine Dining Specializing in Seafood
& Fish with a Tuscan Flair!*



Mon. - Fri.: Lunch & Dinner
Saturday: Dinner & Sunday: Closed

165 Main St. E., Milton
905-693-8345

New from our
**International
Selection Series**

- Australian Chardonnay
- Australian Shiraz

November 12-30

10% OFF

just Wine

342 Bronte St. S. #2, Milton
(905) 876-9463

Family Value

- 2 Medium Pizzas
- 4 Toppings (combined)
- 10 Wings
- 8 Garlic Bread Stix
- 4 Cans of Coca-Cola

FREE Dipping Sauce

ONLY
19.99



241-0-241

525 ONTARIO ST. S. (@ LAURIER)