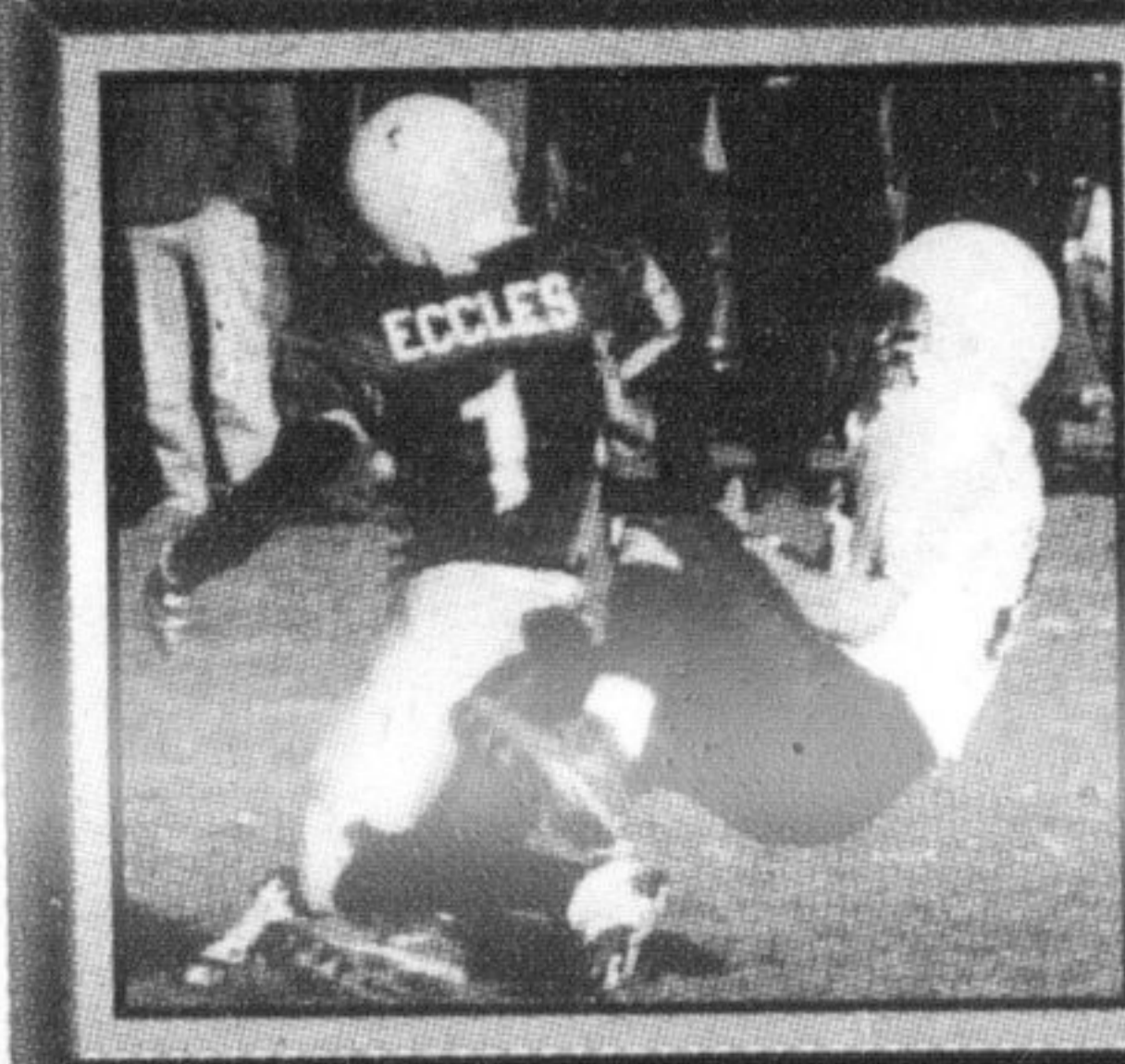


Downtown merchants meeting to make business strategy
See page 2



Literacy focus of upcoming open house
See page 8



Senior Mustangs stage comeback win in semifinals
See page 22

Magna lights casting shadow on family
See page 5

The Canadian Champion

Milton's Choice Since 1860

A Metroland Community Newspaper

Vol. 143 No. 69

Tuesday, November 12, 2002

44 Pages

\$1.00 (GST included)

Protect Your Investment Austen & Noble Insurance
• specializing in residential and rural properties
• Auto
• Business
205 Main St. E.
878-7217
1-800-413-5701
Serving Milton since 1956



Lest we forget

At left, war veterans from all branches of the services march toward the cenotaph at Evergreen Cemetery to the applause of onlookers yesterday. The Remembrance Day ceremony on the 11th hour of the 11th day honoured those who fought for freedom. Above, Bert Porter, a veteran of the Army Service Corps, remembers the fallen. See coverage of Sunday's service at Victoria Park on page 3.

Photos by GRAHAM PAINE

Property manager accused of taking \$250,000 from condos' reserve funds

Residents fear they will have to make up the loss

By **RICHARD VIVIAN**
The Champion

A Milton man faces fraud and theft charges for allegedly misappropriating funds from two properties he managed.

John (Mark) Mallalieu was charged Thursday with two counts of fraud over \$5,000 and two counts of theft over \$5,000.

He was released from custody the same day. Halton Regional Police say during the past 10

years, about \$250,000 was taken from reserve funds for the Bronte Pine (235 Bronte St.) and West Sixteen Mile Creek (318 Laurier Ave.) condominiums — both of which Mr. Mallalieu managed.

Residents of the two condo complexes expressed anger and frustration over the situation.

"People might lose their houses over this. Condo corporations have to have a fund of money in case something happens. If that money goes missing — which it has — then each house has to put up so

much money," commented Kristina Montagiani of the Bronte Pine complex. "It's up to \$2,000, \$3,000 everyone would have to put in."

Those comments were echoed by Ness Cuhm of the West Sixteen Mile Creek complex, saying she was glad to hear the police were involved.

"There are a lot of people really, really pissed off," she told The Champion. "There are a lot of seniors here who could have problems (if they have to contribute to re-building the reserve fund)."

Mr. Mallalieu is scheduled to appear in Milton court December 5 to answer to the charges.

INSIDE

Comment 6-7
Business 10
Dateline 17
Classified 25-27

TUESDAY INSERTS

- Tuesday, November 12 •
- 2 for 1 Pizza* • Business Depot*
- Sportchek* • Molly Maid* • Crawfords Country Garden* • A Designers Touch*
- Rona Home and Garden* • The House Docs* • Sears* • Blacks Photography*

*Selected areas only

WALLACE PONTIAC BUICK GMC

New 2002 Pontiac Sunfire • 7 AVAILABLE WITH VARIOUS OPTION PACKAGES • ABS & AIR BAGS ARE STANDARD



CASH PRICES FROM \$12,899
Plus Freight & Taxes Includes Automatic

or **0%** for 60 months financing.
or **Lease @ 1.5%** for 48 months with **NO 1st payment** or Security Deposit required.

New 2002 Cadillac Deville



CASH PRICES FROM \$46,995
Plus Freight & Taxes

or Finance for **1.9%** for 48 months
or Finance for **3.9%** for 60 months.

Wallace Pontiac 801 Main St. E., Milton Mon - Thurs. 9-9pm, Fri & Sat 9-6pm Service Open Sat. 8:30-2 pm 905-878-2355