

Dateline

• from DATELINE on page B6

Remembrance Day' at Knox Presbyterian Church. The event also features storyteller Marina Lloyd. Dessert and coffee is served at 7 p.m., followed by the concert at 8 p.m. Proceeds support the Knox church elevator fund. Tickets cost \$12 for adults and \$10 for seniors and students. To purchase tickets, drop by the church office Tuesday to Friday from 9 a.m. to noon or call (905) 854-0443 or (905) 878-6066.

Monday Nov. 11

Dr. David Phillips presents an **anti-aging seminar** at Hugh Foster Hall at 7 p.m. The seminar focuses on new discoveries in the field of anti-aging, disease prevention and health maintenance. For information, call (905) 878-5656.

Tuesday Nov. 12

The **Halton LGBT Parenting Network** meets at the Halton Region building, 1151 Bronte Rd. in Oakville, from 7:30 to 9:30 p.m. Present and future parents are welcome to attend the meeting, held in the Aldershot room. For information, call Kirsty at (905) 825-6000, ext. 7781.

The Milton Seniors' Activity Centre, 500 Childs Dr., holds **Mingle and Chat** from 1:30 to 3 p.m. For information, call (905) 875-1681.

The **Halton/North Peel Naturalist Club** meets at Centennial Middle School, 233 Delrex Blvd. in Georgetown, at 7:30 p.m. Robert McCaw presents 'Nature Photography'.

The Heart and Stroke Foundation presents **'Get Active for Life'** at Oakville-Trafalgar Memorial Hospital. David Cravero, manager of the Halton office, provides an overview of heart disease and stroke and the benefits of physical activity. He also suggests how to overcome the barriers to physical activity. To reserve a seat or for information, call (905) 815-5110.

Improve communication and leadership skills with the **Milton Toastmasters**. Everyone is welcome to attend the meeting at the Royal Canadian Legion, 21 Charles St. (upper level), at 7:30 p.m. For information, call Sue at (905) 876-2563.

Calling New Parents, a free program for parents and babies aged 6 months and younger, meets with a public health nurse to discuss parenting and infant care. The group meets at the Milton Community Resource Centre, 917 Nipissing Rd., from 1:30 to 3:30 p.m. For information, call (905) 693-4242, ext. 7899.

Help for Parents, a parent support group, meets at Pinelands Presbyterian Church, 5270 New St. in Burlington, at 7:30 p.m. This non-denominational self-support group helps parents of children who are in trouble at home, at school or with the law or who are abusive or taking drugs. For information, call (416) 251-0233 (days) or (905) 842-1729 (evenings).

The Milton Players Theatre Group holds **auditions for upcoming play 'Angel Street'** at 395 Alliance Rd., Unit 15, at 7:45 p.m. Three females and two males are needed for the non-paying production. For information, call (905) 875-0629.

Wednesday Nov. 13

The **Milton Knitters** meet in the Community Room (upstairs in Loblaws) from 7 to 9 p.m. For information, call Anne at (905) 878-7990.

Entrepreneur to Entrepreneur (E2E) Knowledge Exchange Forum meets at Oakville's Enterprise Centre in Hopedale Mall from 7:30 to 9 a.m. Admission costs \$5 for members and \$10 for non-members. To RSVP or for information, call Pam at

(905) 825-2345.

The Milton Seniors' Activity Centre, 500 Childs Dr., offers a **hot lunch** from 11:30 a.m. to 12:45 p.m. The lunch costs \$5 and includes an entree, salad, dessert and beverage. To sign up or for information, call (905) 875-1681.

The Milton Seniors' Activity Centre's **Shuffleboard Group** meets at 1:30 p.m. No experience is necessary to join. For information, call (905) 875-1681.

The Milton Seniors' Activity Centre, 500 Childs Dr., holds its evening **Euchre** party starting at 7:30 p.m. The competition costs \$2. Prizes are awarded. For information, call (905) 875-1681.

Halton Healthcare Services and the Canadian Mental Health Association present free seminar **'Understanding Anxiety'** at Milton District Hospital from 11:30 a.m. to 12:30 p.m. To reserve a seat or for information, call (905) 815-5110.

The **Close and Over Sixty Club** meets

at St. John's Anglican Church, No. 10 Sideroad and Guelph Line, from 1 to 4:30 p.m. All Bridge players are welcome to attend. For information, call (905) 854-0325.

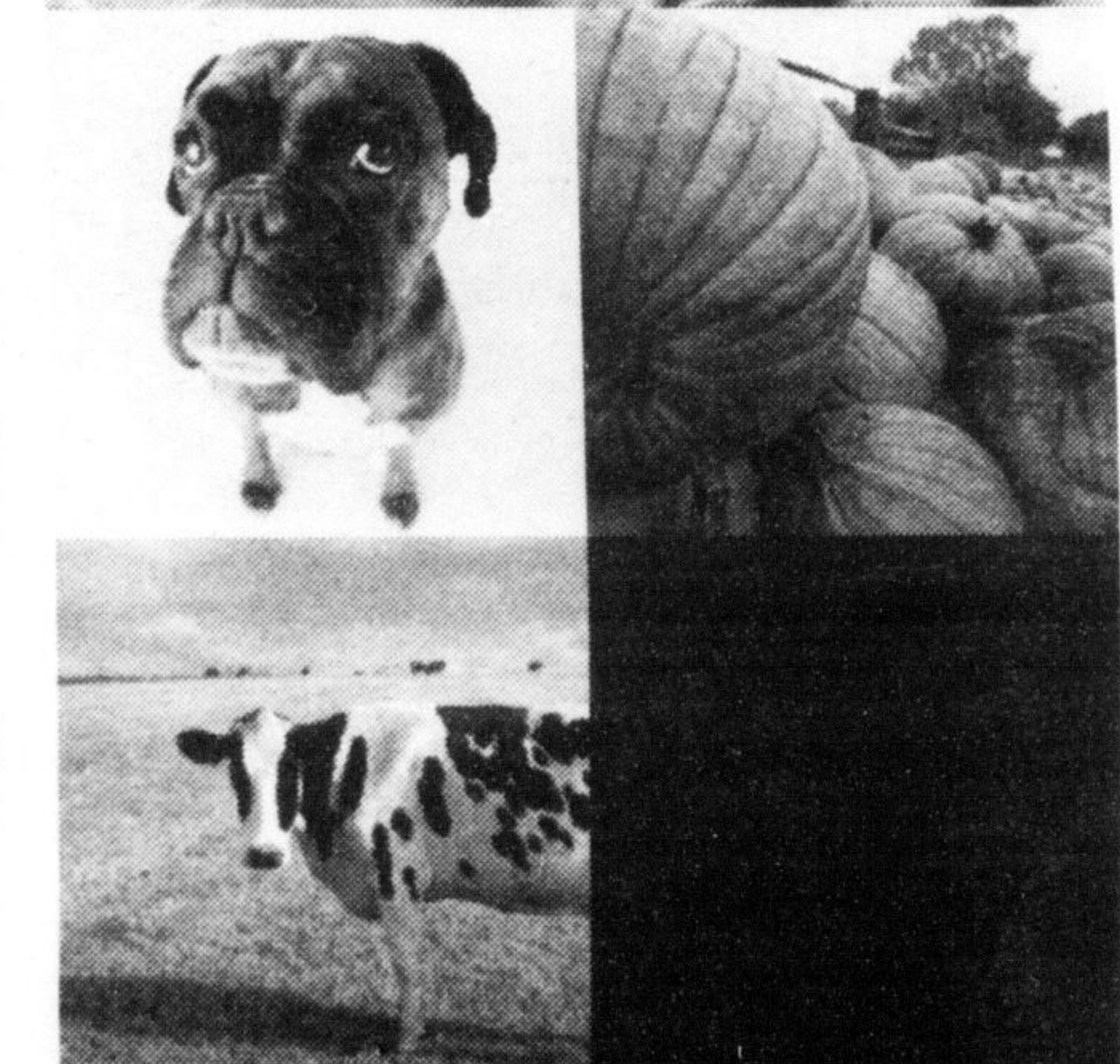
Mom's Morning Out meets at St. Paul's United Church, 123 Main St., from 9:30 to 11 a.m. Caregivers find friendship, support and guidance while the children are cared for in Graham Hall. The group isn't affiliated with the church. For information, call Natasha at (905) 878-5841, Sherry at (905) 878-5976 or Linda at (905) 876-3659.

Thursday Nov. 14

The Burlington chapter of the **Schizophrenia Society of Ontario (SSO)** meets at Port Nelson United Church, 3132 South Dr., in Burlington at 7 p.m. SSO is a self-help group for friends and families of people who have schizophrenia. For information, call (905) 634-6797.

Dateline is a free service for non-profit groups to promote their events. Please submit items a week before event.

A Royal family experience.



Bring your family. Bring your friends. Be part of the one and only Royal Agricultural Winter Fair. For ten amazing days see the best of Canadian agriculture. Spend quality time with some of the Royal's friendliest farm animals. Take in the excitement of The Royal Horse Show and canine agility trials. Antique markets. Specialty boutiques. Great food. So much to see, do and enjoy - there's nothing else like it.

Family Favourites include:
The Royal Horse Show
The Royal Invitational Professional Rodeo - New
The Budweiser Team of Clydesdales
The Petting Farm
Celebration of the Dog
Interactive Learning Centres and more!

Once a year,
Country Comes to the City.

Celebrating 80 years

The Royal

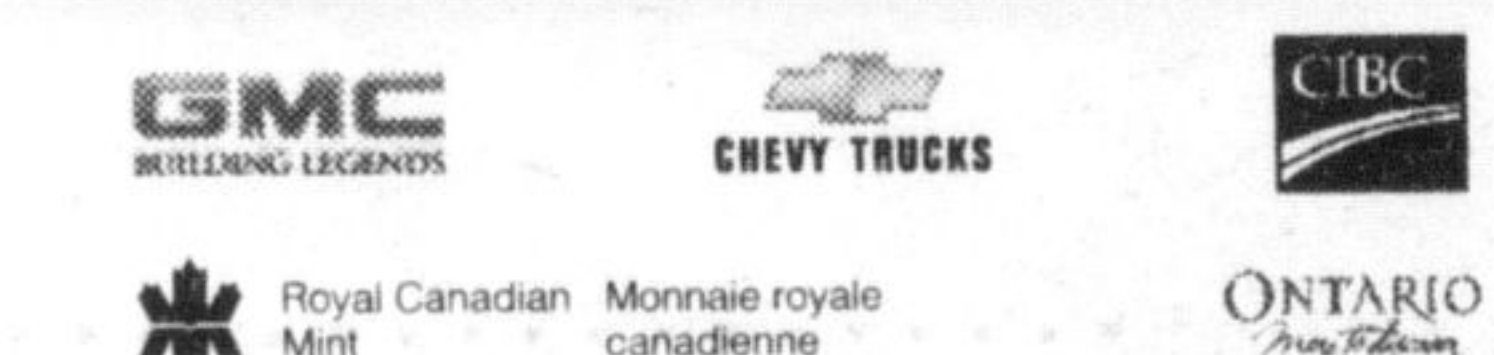
AGRICULTURAL
WINTER FAIR

November 8 - 17, 2002

National Trade Centre, Exhibition Place
Toronto, Ontario, Canada

INFO:
416 263-3400 or www.royalfair.org

Tickets:
416 872-1212 • 1 800 461-3333
or www.ticketking.com



GO THROUGH SLEET, ICE AND SNOW - GET BLIZZAK DURING THE BRIDGESTONE SNOW TIRE SWITCH!

LIMITED TIME ONLY!

Have your summer tires switched over for a set of Blizzak winter tires from Bridgestone. Blizzak is THE requested name by winter tire buyers.

BRIDGESTONE
A GRIP ON THE FUTURE

ICE AHEAD
GET READY



BLIZZAK
WS-50™ With UNI-T®

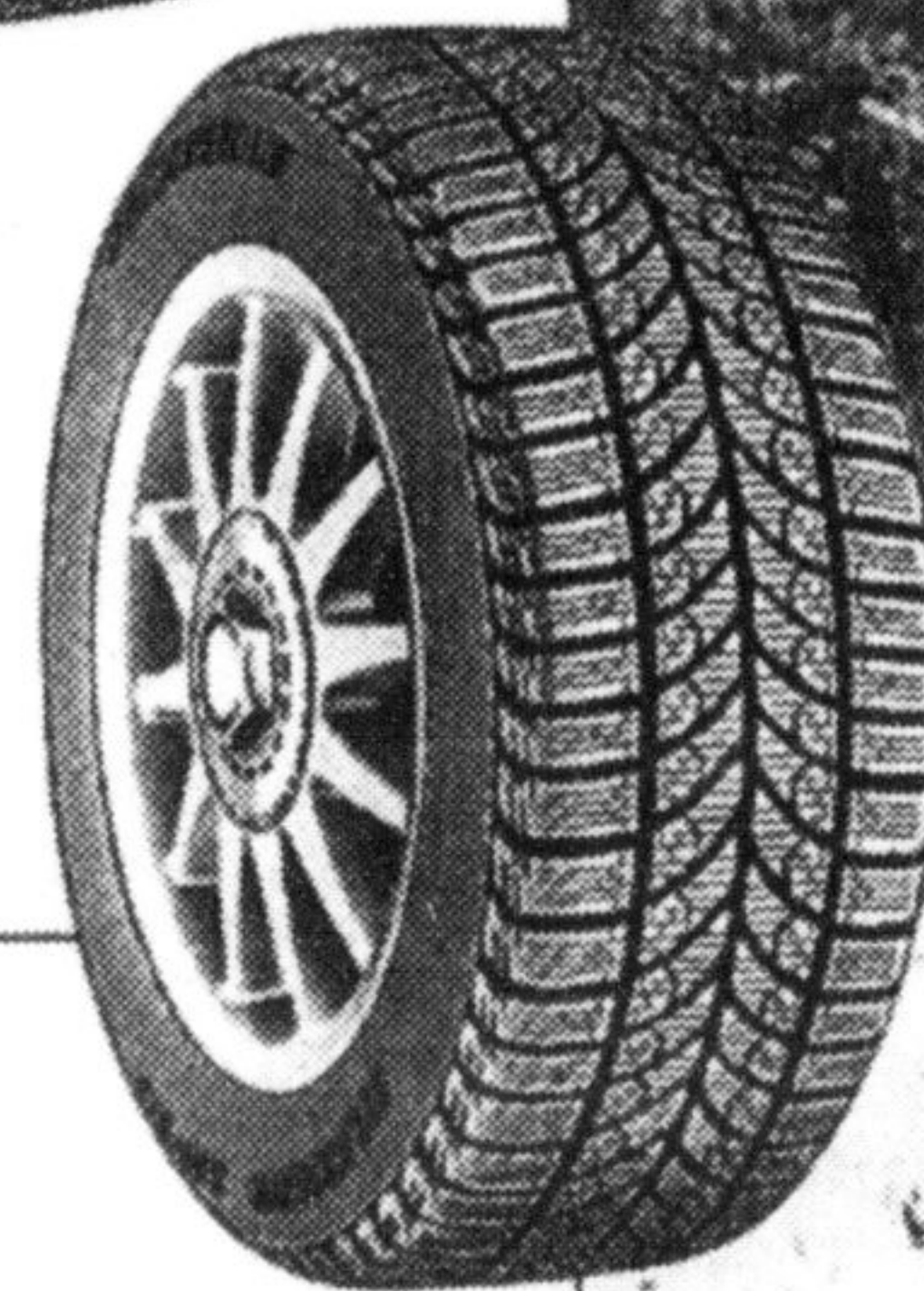
The Winterbiter™

- Multicell Compound for snow and ice performance without studs.
- UNI-T technology improves snow traction and braking.

BLIZZAK
LM-22™ With UNI-T®

The BLIZZAK For High-Performance Sedans

- Provides well-balanced overall performance both in winter and wet or dry conditions.
- For performance touring sedans



BLIZZAK
LM-18™ With UNI-T®

The BLIZZAK for High-Performance Coupes

- A high silica content tread compound enhances both in winter and wet performance.
- For performance touring coupes.



BLIZZAK
WINTER DUELER™ With UNI-T®

The BLIZZAK for Light Trucks and SUVs™

- Delivers superior winter traction and road stability.
- Unique Multicell™ compound improves ice performance

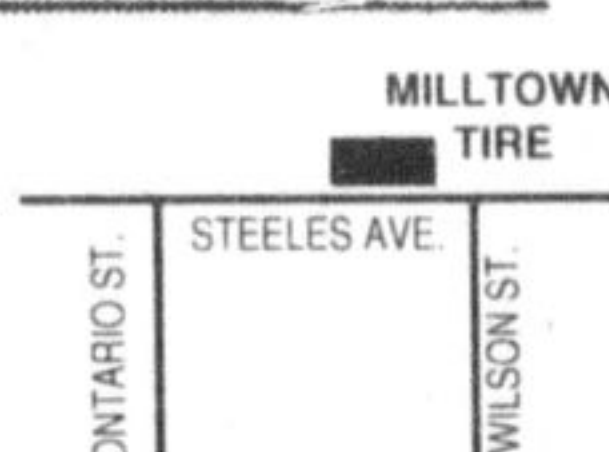
BLIZZAK

YOUR WINTER TIRE HEADQUARTERS



Milltown Tire Service Ltd.

Milltown Tire Service Ltd.
675 Steeles Ave. E., Milton
905-878-6785



Meets the severe snow service requirements of the Rubber Manufacturers Association (RMA) and the Rubber Association of Canada. (RAC).



Ultimate Tire Technology
UNI-T® IS THE DIFFERENCE

UNI-T, the Ultimate Network of Intelligent Tire Technology, delivers superior wet stopping performance without sacrificing dry or snow performance.