



## Happy Halloween, Milton!

Dave Cameron sprinkles some leaves around his elaborate front yard Halloween display — appropriately dubbed Deathday Boris — in preparation for Thursday night's Halloween trick or treats. A stop at this Mountain Drive homestead will no doubt be an evening highlight for local ghosts and goblins.

Photo by  
GRAHAM PAINE

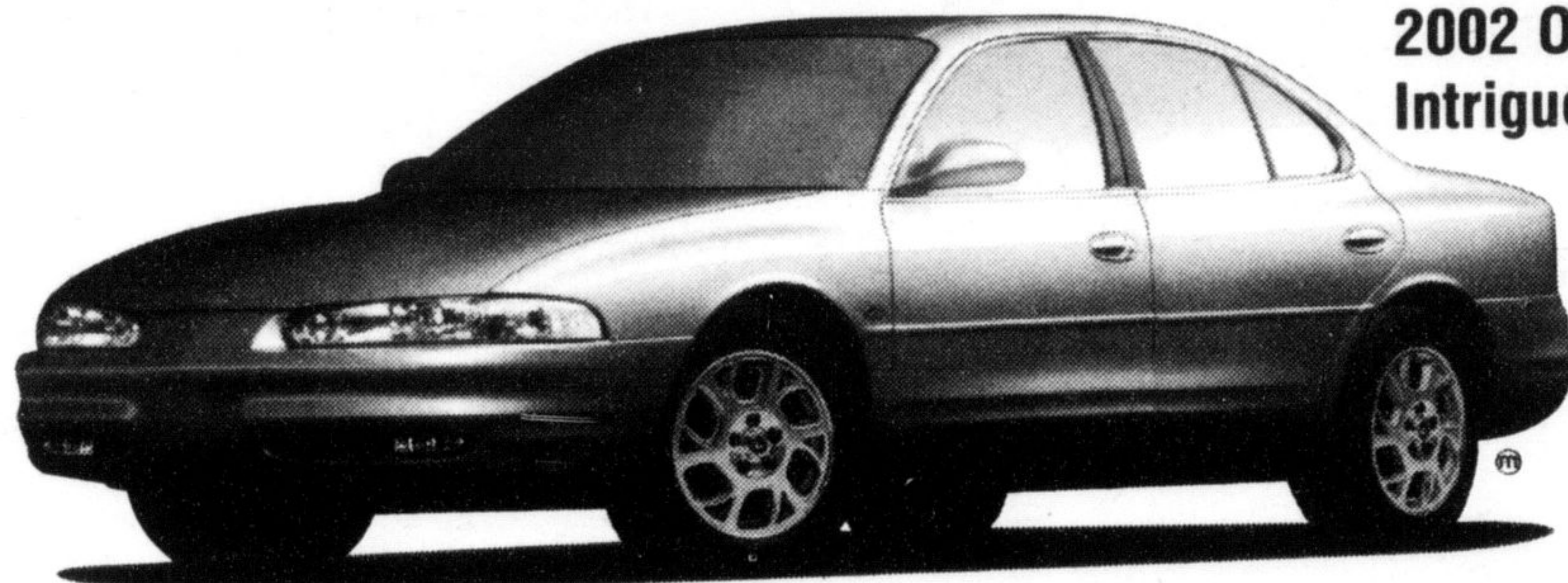
**RICHARDSON CHEVROLET-OLDSMOBILE**  
**2002 Model**

# Year End Sale

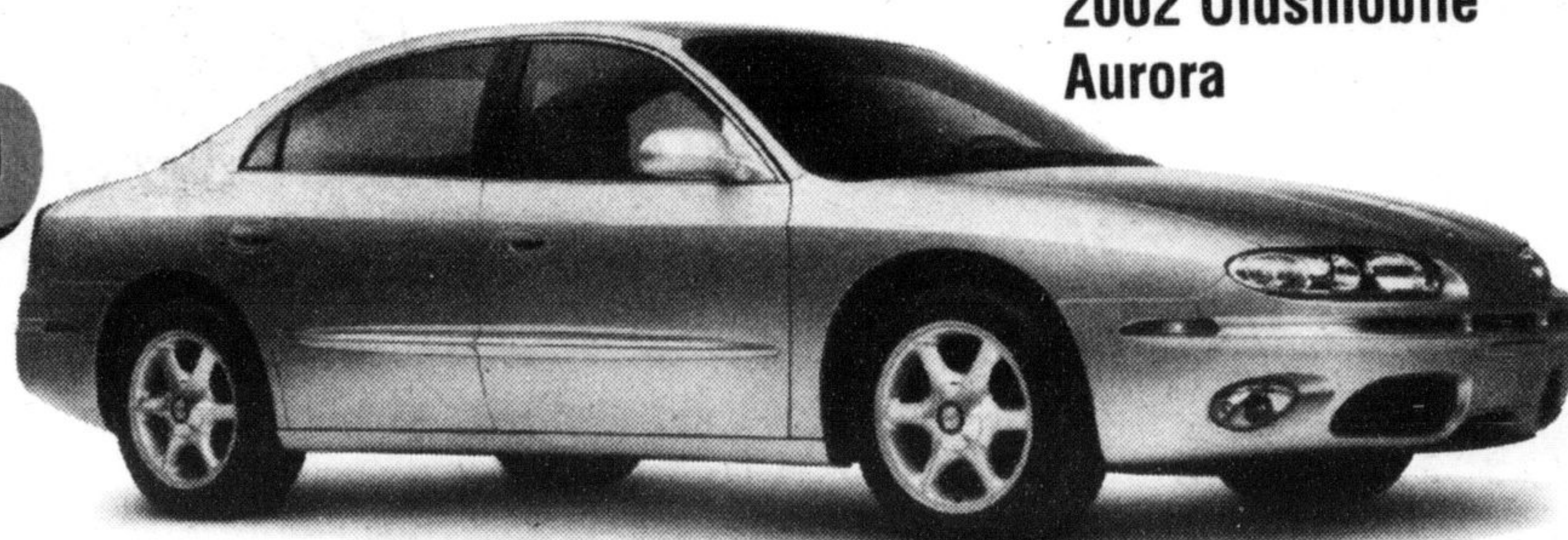
Good Selection of New & Demonstrators Available



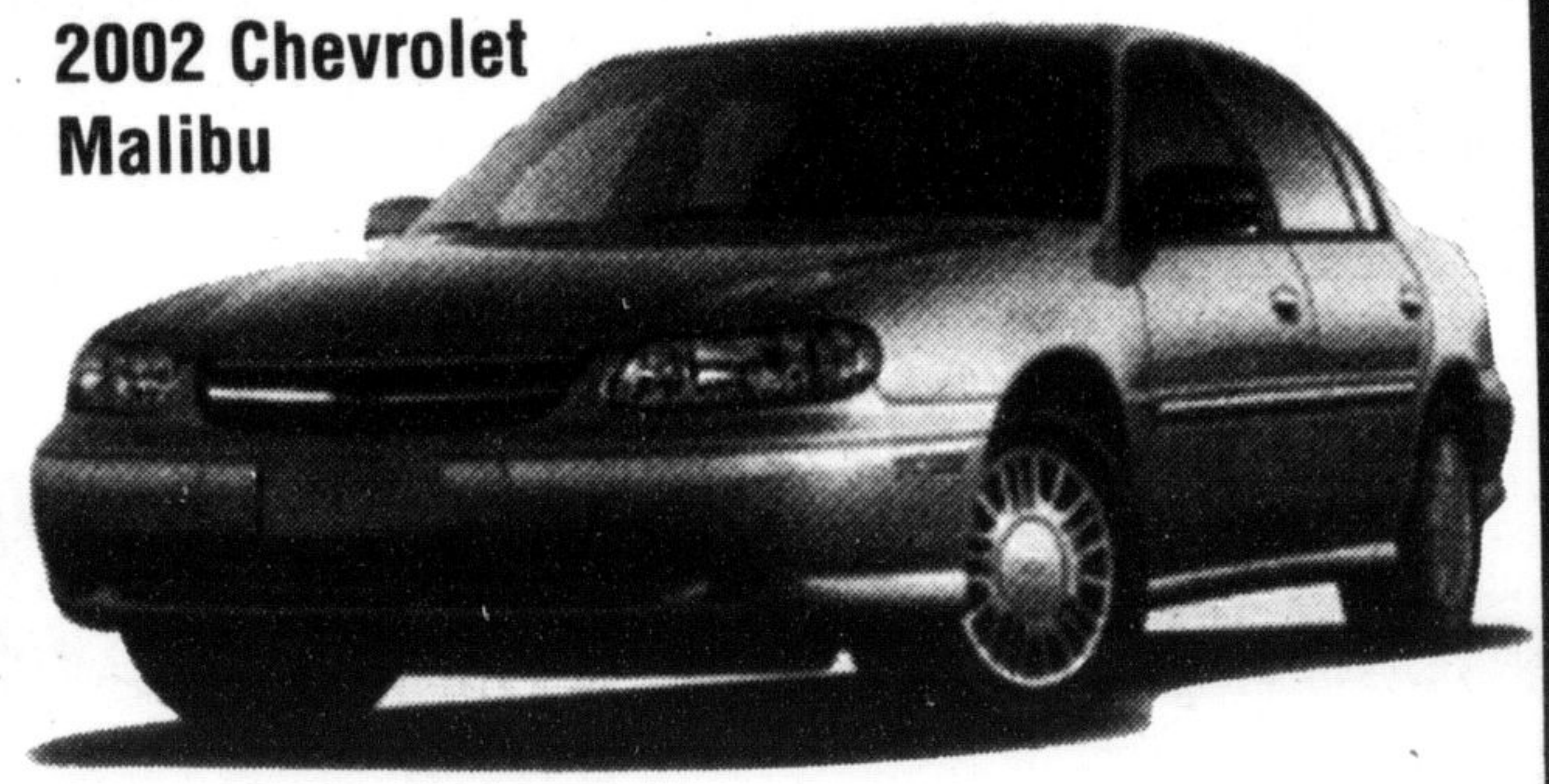
2002 Chevrolet Trailblazer



2002 Oldsmobile Intrigue



2002 Oldsmobile Aurora



2002 Chevrolet Malibu

**0%**

**Financing**  
up to 60 mths\*

or

up to **\$4200\*** credit available  
to cash buyer

All Trade-Ins  
Welcome!

**Graduate Program**  
**\$1000**  
off  
the purchase or lease of new vehicle

All models qualify for further savings with your GM Card points



Serving Milton  
For Over 3  
Generations  
The sensible way to buy a car or truck

**RICHARDSON**  
**CHEVROLET-OLDSMOBILE**

HWY. 25 S. AT DERRY RD., MILTON

**878-2393**

\*on select models - see dealer for details

Main St.	
Derry Rd	