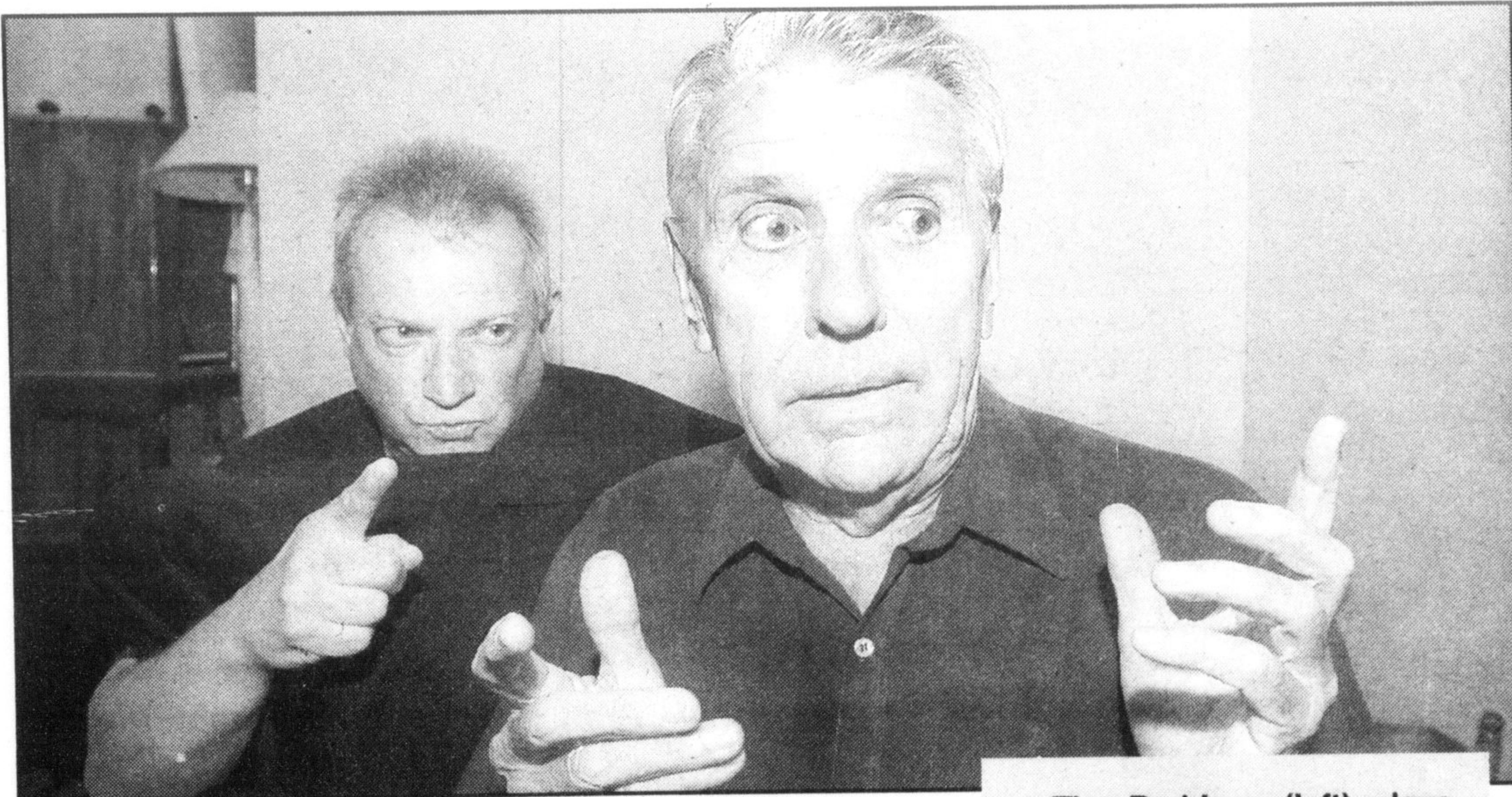


Arts & Entertainment



Players set to open melodrama Nov. 1

By FANNIE SUNSHINE
The Champion

A missing family fortune, helpless maidens, evil villains and stalwart heroes.

All the above will be part of the Milton Players Theatre Group's upcoming production of the Mumberley Inheritance.

"It's a melodrama," said director Geoff Ford. "We want people to cheer on the good guy and boo the bad guy. It's a good family play."

Veteran Players actor Tim Beddoes takes on the role of the villain, Marmaduke Mayhem. Jack Redmond plays Sir Roger Mumberley, father of Daphne. Kelly Nelson, who was last seen in *An Act of the Imagination*, plays the role of Daphne Mumberley.

Grewyn Davies was given the role of the hero, Rodney Stoutheart and Charlie Fisher plays the role of long lost brother Jack Mumberley.

Rookie actor Glenn Purchase plays Crispin Cringe and Joan Patch assumes the

role as nurse Polly.

Veteran Player's actor Susan Cranford plays maidservant Dotty.

The stage is set in Suffolk, England at Mumberley Manor, and follows Jack Mumberley's quest of trying to find the secret to the family's fortune. His father's gambling debts are in the hands of Marmaduke Mayhem, and all the ladies can do is watch helplessly.

"We started rehearsing at the beginning of September and we've been having lots of fun," Mr. Ford said, who directed last year's play *Run For Your Wife*. "We haven't done a melodrama in quite some time and it's a nice change from the murder and farce plays."

The show will run November 1, 2, 7, 8 and 9 at the Milton Seniors' Activity Centre, 500 Childs Dr. The November 1, 7 and 8 shows will begin at 8 p.m. Tickets cost \$12.

The dinner theatre productions November 2 and 9 will begin at 7 p.m., followed by the play at 8:15 p.m. Tickets cost \$30. To reserve seats or for more information, call (905) 875-0629

Tim Beddoes (left) plays Marmaduke Mayhem and Jack Redmond portrays Sir Roger Mumberley in the Milton Players production of the Mumberley Inheritance. The play opens November 1 at the Milton Seniors' Activity Centre.

Photo by GRAHAM PAINE



MILTON PLAYERS THEATRE GROUP

Presents

The Mumberley Inheritance

by Warren Graves

November 1, 2, 7, 8, 9, 2002

Milton Senior's Activity Centre,
500 Childs Drive

Tickets are available at Delacourt's (cash/cheque only), or by calling 905-875-0629

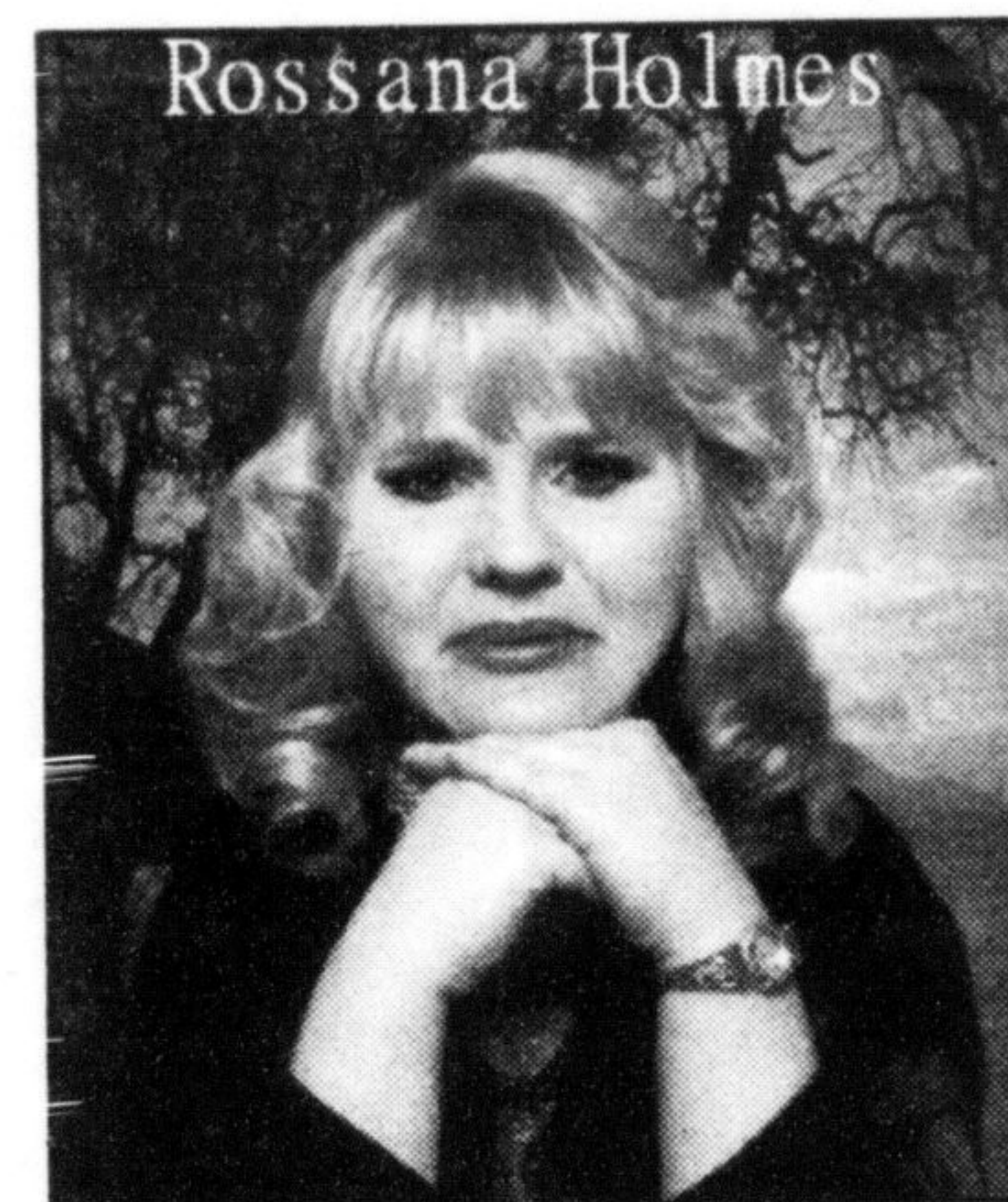
Patsy Cline tribute artist opens new show tonight

By FANNIE SUNSHINE
The Champion

The first time Rossana Holmes stepped onto the stage dressed as Patsy Cline, she could have heard a pin drop.

"There was dead silence. I thought they didn't like me but later I found out they were so overwhelmed by how much I looked like her."

For the past year, the former Miltonian has worked as a Patsy Cline tribute artist and has travelled around Ontario singing the songs of the late country star.



Ms Holmes was first exposed to Patsy Cline's music while singing karaoke at her friend's bar in Acton.

"He told me I sounded just like her. I told him I didn't know who she was, all I listened to was Barbra Streisand. When I heard Patsy Cline's music, I thought who's this woman who sounds like me?" she joked.

It was there on stage that an agent approached Ms Holmes and asked if she wanted a job performing as Patsy Cline as part of the Las Vegas Legends on Tour.

"The first show I did was incredible," she recalled. "My mom made my costume and I wore a black wig. I was a dead wringer for her (Patsy Cline). We performed all

• see HOLMES on page 13

Newly Restored

Fine Dining Specializing in Seafood & Fish with a Tuscan Flair!

WILD GAME WEEKS
Book your reservations today!!!

OCTOBER 30TH GOURMET NIGHT & WINE TASTING with Wild Game
Book your reservations now!!!

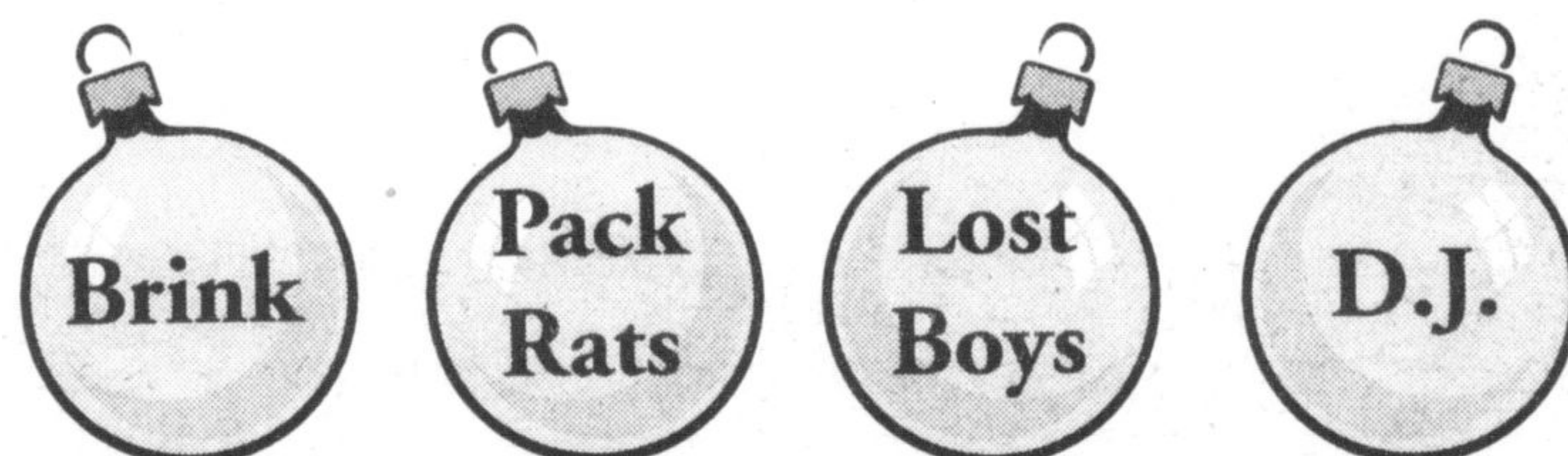
Mon. - Fri.: Lunch & Dinner
Saturday: Dinner & Sunday: Closed

165 Main St. E., Milton
905-693-8345

Be Part of the First Annual Milton Christmas Party

Sat. Nov. 30th 5pm - 1am at Country Heritage Park

Live Entertainment



5-9pm Platter Buffet

Cash Bar

Book your tickets now!

For individuals, groups & office parties

Cost: \$15 per person

Tickets available at:

Kalena Flowers 905-876-1000

Country Heritage Park 905-878-8151

Computer Brothers 905-693-1446

G.P. Music 905-299-0528

Proceeds to the Canadian Champion
Salvation Army Children's Christmas Fund

Canadian
Champion



Loblaws
COGECO



G.P. Music
Production



Kalena
Flowers

Bring in an
unwrapped gift

