

# MONTHLY NEWSLETTER

251 Main St. E., Milton L9T 1P1 905-878-0581

For up-to-date information highlighting both the Milton and Escarpment Country regions, we invite you to visit our Web-sites:

[www.chamber.milton.on.ca](http://www.chamber.milton.on.ca) [www.escarpmentcountry.on.ca](http://www.escarpmentcountry.on.ca)

## NEW MEMBERS CONTINUED

### FIRST CARE, FIRST AID TRAINING & SERVICES

83 Tremaine Road  
Milton, Ontario, L9T 2W8  
Contact: Jan Murdoch, Owner  
Phone: 905-878-4016  
Fax: 905-876-0616  
e-mail: [chief@globalserve.net](mailto:chief@globalserve.net)  
website: coming soon!

Certified First Aid, CPR and DEFIB Instructors can provide training for individuals as well as company employees. Members of the National Ski Patrol and therefore able to provide first aid services at special events.

### DUNDEE SECURITIES CORPORATION Member CIPF

5420 North Service Road  
Burlington, Ontario, L7L 6C7  
Contact: Victor Lapointe, B.A., Hon, FMA,  
Investment Advisor  
Phone: 905-336-8600  
Toll Free: 1-800-336-8606  
Fax: 905-336-9287  
e-mail: [vlapointe@dundeesecurities.com](mailto:vlapointe@dundeesecurities.com)  
website: [www.vlapointe.dundeewealth.com](http://www.vlapointe.dundeewealth.com)  
Victor and his team are the founders of "Serving Seniors Everywhere", a program designed to help educate and implement safe, financial strategies for today's Canadian Senior.

### IAN B. BENNETT - INVESTORS GROUP

552 Caverhill Cres.  
Milton, Ontario, L9T 5K6  
Contact: Ian B. Bennett, Financial Consultant  
Phone: 905-876-3512  
e-mail: [ian.bennett@investorsgroup.com](mailto:ian.bennett@investorsgroup.com)  
Creating wealth, preserving wealth and transferring wealth. Solutions built around you.

### JOB CONNECT / PLACEMENTS PLUS

Sheridan College / STC  
407 Iroquois Shore Rd., Room A13/A11  
Oakville, Ontario, L6H 1M3  
Contacts: Elaine Reid or Nancy Gruszewski, Job Developers  
Phone: 905-845-9430 ext. 8139 / 8088  
Fax: 905-815-4111  
or 905-815-4115  
e-mail: [elaine.reid@sheridanc.on.ca](mailto:elaine.reid@sheridanc.on.ca) and [nancy.gruszewski@sheridanc.on.ca](mailto:nancy.gruszewski@sheridanc.on.ca)  
website: [www.sheridanc.on.ca/services/jobcon](http://www.sheridanc.on.ca/services/jobcon) and [www.sheridanc.on.ca/services/placeplus](http://www.sheridanc.on.ca/services/placeplus)  
Job Connect is a free employment service to help youth 16-24 years old who are out of school and work, find full-time employment. This program is funded by the Ministry of Training, Colleges and Universities and administered through Sheridan College. Job Connect provides free service to employers and job seekers in Peel and Halton Regions. Placements Plus is a free placement service funded by Human Resources Development Canada which is administered through Sheridan College for unemployed individuals who live in the Peel, Halton and Dufferin Regions.

### GLOBAL PROMOTIONAL APPAREL

17 Park Ave.,  
Acton, Ontario, L7J 1Y3  
Contact: Michael Turner, Owner  
Phone: 519-853-9082  
Fax: 519-853-9081  
e-mail: [mturner@globalpa.ca](mailto:mturner@globalpa.ca)  
website: [www.globalpa.ca](http://www.globalpa.ca)

We offer quality apparel and state of the art embroidering capabilities, a convenient ordering process and outstanding customer service with the ability to have your company's own web-page on our website.

### RED MAPLE HOUSE BED & BREAKFAST

R.R. #3, 6190 - 15<sup>th</sup> Sideroad  
Milton, Ontario, L9T 2X7  
Contact: Ilse and Horst Sandloehken,  
Co-owners / Operators  
Phone: 905-878-5716  
Warm welcome in contemporary, spacious country home with European atmosphere, tastefully furnished and guest room located in separate wing. A wonderful place to wind down; relax by the pool after a day of sightseeing and travelling. Situated on the Niagara Escarpment with own maple bush at backdoor.

## RENEWAL MEMBERSHIPS

Thank you to the following members for renewing their Chamber membership.

ACP Computer Technologies Inc. Banvil 2000 Berkshire Investment Group Inc., BMO Nesbitt Burns (Tom Dusmet) Churchill Collision Inc. Conbel Express & Logistics Country Heritage Park CPL Systems Canada Inc. Cyr Electrolysis & Laser Centre Driver & Vehicle Licence Office E.C. Drury High School Family Place, The Fire Safety House Garold Automation Inc. Halton Printing	Harrop Art Gallery Hitherfield Preparatory School Ingrid J. Hibbard Insurge Inc. Integrated Training Resources Investors Group - Kirk McCallum Jim Shaw Accounting Services Inc. Johnston Maintenance Ltd. Junior Achievement of Halton Inc. Lasswell Medical Co. Ltd. Lodestar Logistics M & M Meat Shops Maple Hill Tree Service Marcucci Costume Studios Michael J. Darling	Miltowne Collision Inc. Miltowne Insurance Inc. Mobile Custom Welding Ltd. Nascar Sports Lounge Naturally Be Wellness Centre Northstar Aerospace Canada (Inc.) Ontario Electric Railway Historical Association Prudential Town Centre Realty R.M. Contracting RBC Dominion Securities - R.Robino Ronald Flannagan, Q.C.	Ross Dixon Fiancial Services/Canadian First Mortgages - Paul Foley Royal LePage Real Estate - Carol D. Budworth Scotts' Accounting Services Stanley and Associates Structural Inspections Limited Subway Sandwiches & Salads L. Krane Thermoshell Inc. Zak's Pharmacy Zanatta Construction Ltd.
--	--	--	--

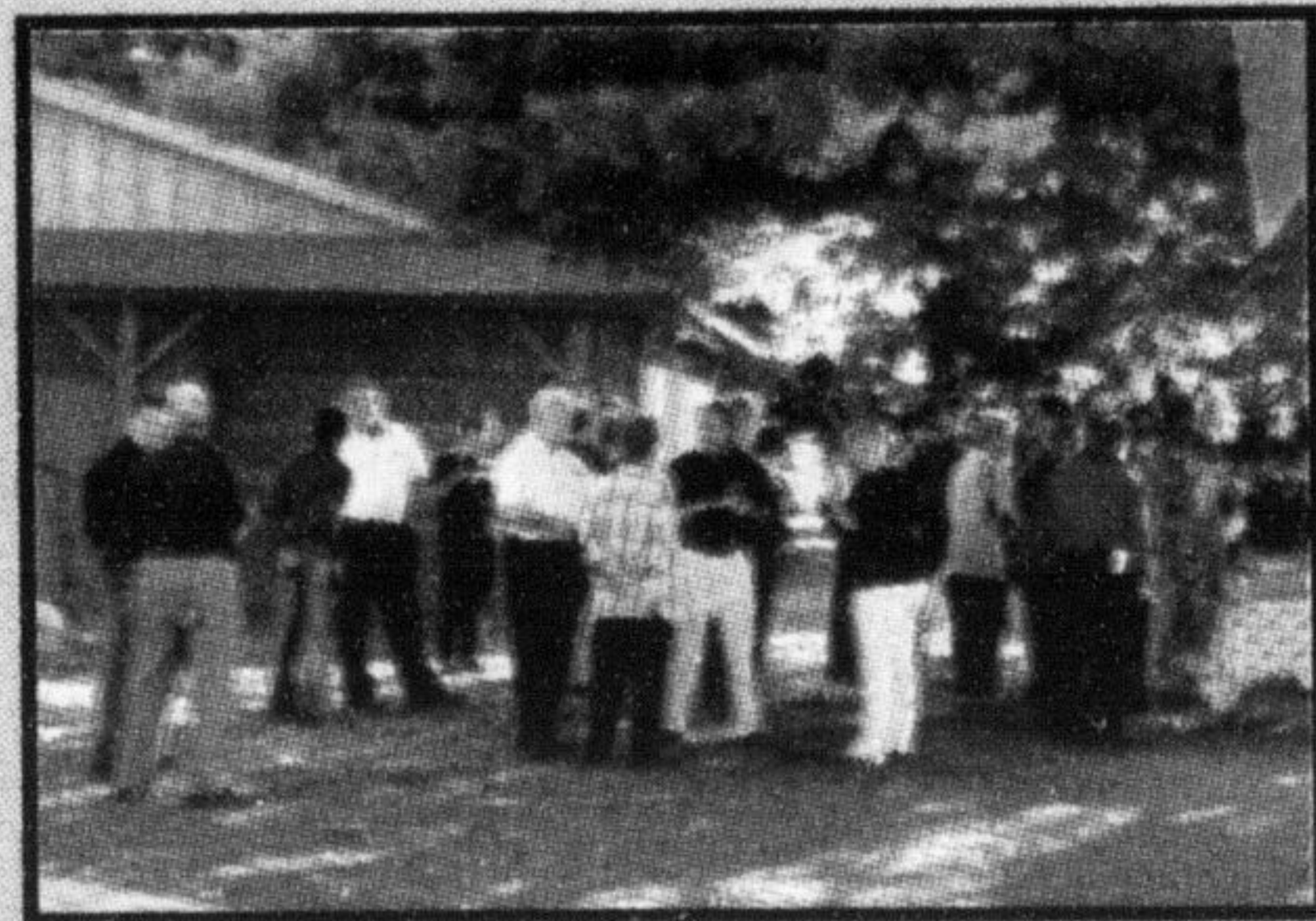
\*represents ESC Country Partners

## BUSINESS AFTER HOURS

Bert and Laurie Andrews of Andrews Scenic Acres / Scotch Block Country Winery hosted a very enjoyable Business After Hours September 24<sup>th</sup>. Approximately 50 members had a wonderful tour of the vineyards, winery, barn and gardens. Congratulations to Bert and Laurie for a very successful Business After Hours!

NEXT BUSINESS AFTER HOURS IS:  
Tuesday, October 22, 2002 at

A Country Mile Inc., Carriage Square, 265 Main St. E. Milton



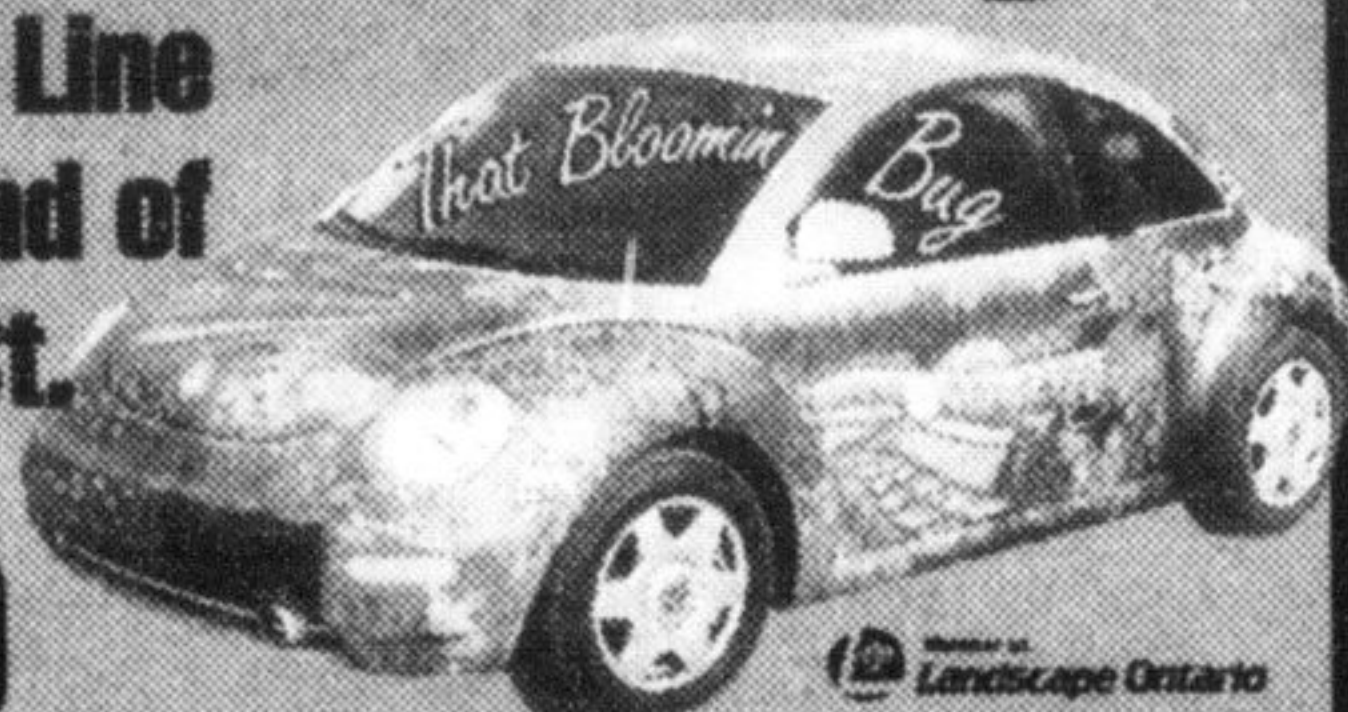
## Taylor Nursery

Landscape: 7429 5th Line  
• Design & Decor At East End of  
• Maintenance Main St.  
• Supplies

905-876-4100

HOURS  
Mon-Fri 7:00am - 7:00pm  
Sat: 9-7 Sun: 10-5

• Trees • Shrubs • Annuals • Perennials  
• Garden Antiques • Water Gardening • Statuary  
• Heritage Blue Pot • Pottery • Gravel • Sand • Soil



## JOHNSON CONTROLS

Johnson Controls Ltd.  
Automotive Systems Group  
8205 Parkhill Drive  
High Point Business Park East  
Milton

(905) 875-2128



Your Printing Solution.  
... and more!

100 Nipissing Road, Unit 9  
Milton, Ontario L9T 5B2  
(Behind Milton Mall)

- Graphic Design & Typesetting
- Multi-Colour Printing
- Finishing & Bindery
- High Speed Copier
- Full Colour Laser Copier
- Wide Format Copier

Tel: 905-876-4647  
Fax: 905-876-1100

FREE PICKUP & DELIVERY

## ROBERT (PIE) LEE INSURANCE AGENCY

Life - Disability - Critical Illness - Annuities - RRIFFs - LIFs  
RRSPs - Mutual Funds (M.S.I.L.) - RESPs  
Celebrating "27" Years in Business

Kim Mitchell  
[kim@robertleeinsurance.com](mailto:kim@robertleeinsurance.com)



Bob Lee  
[bob@robertleeinsurance.com](mailto:bob@robertleeinsurance.com)

245 Commercial St.  
Office 905-878-5786

Milton, ON L9T 2J3  
Fax 905-878-3692

## FIRST PROFESSIONAL Collision & Paint INC.

MILTON'S FULL SERVICE COLLISION CENTRE  
Call Steve Boers

706 Main Street, East  
Milton, ON

(905) 876-1116

We will exceed your expectations

OPEN SATURDAYS 8:00am - 12 noon

For after hours appointment call (905) 878-8787

## SKD COMPANY

375 Wheelabrator Way, Milton  
(905) 875-1427  
(416) 798-7099



## MILTOWNE Insurance Agency Inc.

GROUP LIFE AND HEALTH SPECIALISTS

205 Main St. E. P.O. Box 152, Milton, ON L9T 4N9  
Exclusive agent for the Chamber of Commerce Plan

DENTAL, HEALTH AND DISABILITY INSURANCE

Available for as few as one person at Group Rates  
Featuring - "Assure" Prescription Card

Roger Lauzon 905-878-1633

Fax 905-878-1671



Printing - for the job you needed yesterday  
**MINUTEMAN PRESS.**

We can offer you  
creative design,  
full bindery service,  
quality full service printing,  
& copying, with free pick-up,  
and delivery!

16-348 Bronte St. S.  
Milton, Ontario L9T 5B6  
Phone: 905-878-8203  
Fax: 905-878-3053

Hours:  
Monday to Friday  
8:30 to 5:30

## Paying too Much for Insurance?

MILTON CHAMBER OF COMMERCE MEMBERS AND THEIR EMPLOYEES

Save up to 55% on  
Auto and Home Insurance!

24 Hr Claims Assistance  
Policy service 8am to 7pm

★ Doug Peddie ★ Cassandra Thompson

Phone 905-876-4607  
or Fax 905-876-1001

