

Youths jump police officer trying to break up crowd

By **FANNIE SUNSHINE**
The Champion

A Halton police officer escaped serious injury after he was jumped from behind by several youths while trying to break up a crowd at the Laurier Plaza Friday night.

Officers were called to the plaza, located at Laurier Avenue and Ontario Street, at about 10:45 p.m. following complaints of rowdy teenagers in the area.

Officers arrived at the scene to

find close to 200 youths gathered in the parking lot.

While officers were busy dealing with the crowd, Const. Chris Grouber was punched and kicked from behind by several of the youths, said Det. Sgt. Don Cousens, adding another officer disbursed pepper spray on the attackers.

Const. Grouber was treated for a sprained wrist and bruising. He didn't require hospitalization.

"Anytime you have 200 youths in a lot it's a major concern for us," Det. Sgt. Cousens said, adding the

plaza is a popular hang out spot for younger people. "It's even more of a concern when the kids are boisterous and alcohol is involved."

He said police patrol will be stepped up in that area, adding officers from across Halton attended the call.

"We'll be keeping a closer eye on the area. We have to be vigilant. Parents should be asking where their kids are going at night."

Two Milton youths, aged 13 and 16 years, face charges of disturbing the peace and breach of a peace bond.

Cost to use school facilities rises

Along with the return of students to class, the arrival of September means increased fees for community groups looking to use school facilities after hours.

As of September 1, school facility rentals jumped from between \$8.50 and \$38 per hour to anywhere between \$9.10 and \$78.11 per hour, depending on the facility and time.

The new fee structure is part of a revised reciprocal use agreement negotiated between the Town and both school boards earlier this year.

"The new funding model (instituted in September, 2001) basically removed our ability to tax locally,"

said Gerry Cullen, Halton District School Board superintendent of facility services. "We need to be accountable back to the Province for our education dollars."

The new fees represent the cost to the school boards to operate their facilities outside school hours, as well as a \$1 administrative fee for the Town to manage the bookings.

The original reciprocal use agreements, initiated in the 1970s, meant the town had access to the schools for community initiatives and the schools had access to municipal facilities at no charge.

Under the new agreement, fees will apply to all users, but recipro-

cal uses will still be applied. Reciprocal uses include the exchange of facilities (Town use of schools and vice versa) and services such as Town-run maintenance of school playing fields.

In its approval of the agreements earlier this year, town council decided to phase in the payment increases for local Scout and Guide groups — both of which previously paid no rental charges.

This year, Scouts and Guides will have to pay half the fee. Starting in September 2003, they'll be on the hook for 75 per cent of the fee and in subsequent years the entire fee will be charged.

Wallace Pontiac Buick GMC

Sunfire Over 32 to choose

Special 2002 FINAL CLEAROUT



Sunfire SL Coupe



Sunfire SL Sedan

It's your choice

2 door or 4 door

Brand New Sunfire Cash Price \$11,488 + Freight

or Smartlease for \$220. per month + taxes

NO first payment and NO security deposit required.

Add \$18 per month for automatic.

Add \$26 more per month for automatic & sunroof.

— or choose —

Last Year for Standard ABS Brakes 0% Financing 48 Months (low 60 month interest rates as well)

*0% available on new & demo models only. Cash back may be taken in lieu of financing OAC. All prices plus PST and GST.

Visit our NEW LOCATION and SHOWROOM

Wallace
PONTIAC • BUICK • CADILLAC
(905) 878-2355 TOLL FREE 1-888-878-2354
801 MAIN ST. E. MILTON
MON. - THURS. 9:00 AM - 9:00 PM
FRI. & SAT. 9:00 AM - 6:00 PM
ACCESS TO QEW FROM HWY 25 & TRAFALGAR
• PONTIAC • BUICK • CADILLAC • GMC • PONTIAC • BUICK •

LaRose
Italian Bakery and Delicatessen

Fresh Bread and Buns Baked daily



Bakery Specials
Natural Grain Bread \$1.49 each
8" Pumpkin Pie \$3.49 each
contains no fat or sugar

Deli Specials
Brandt's Kolbassa Meatloaf \$3.69 or 81¢/100g
German Salami \$4.99 or 1.10/100g
NEW! Brandt's Montreal Smoked Pork \$4.99 or 1.10/100g

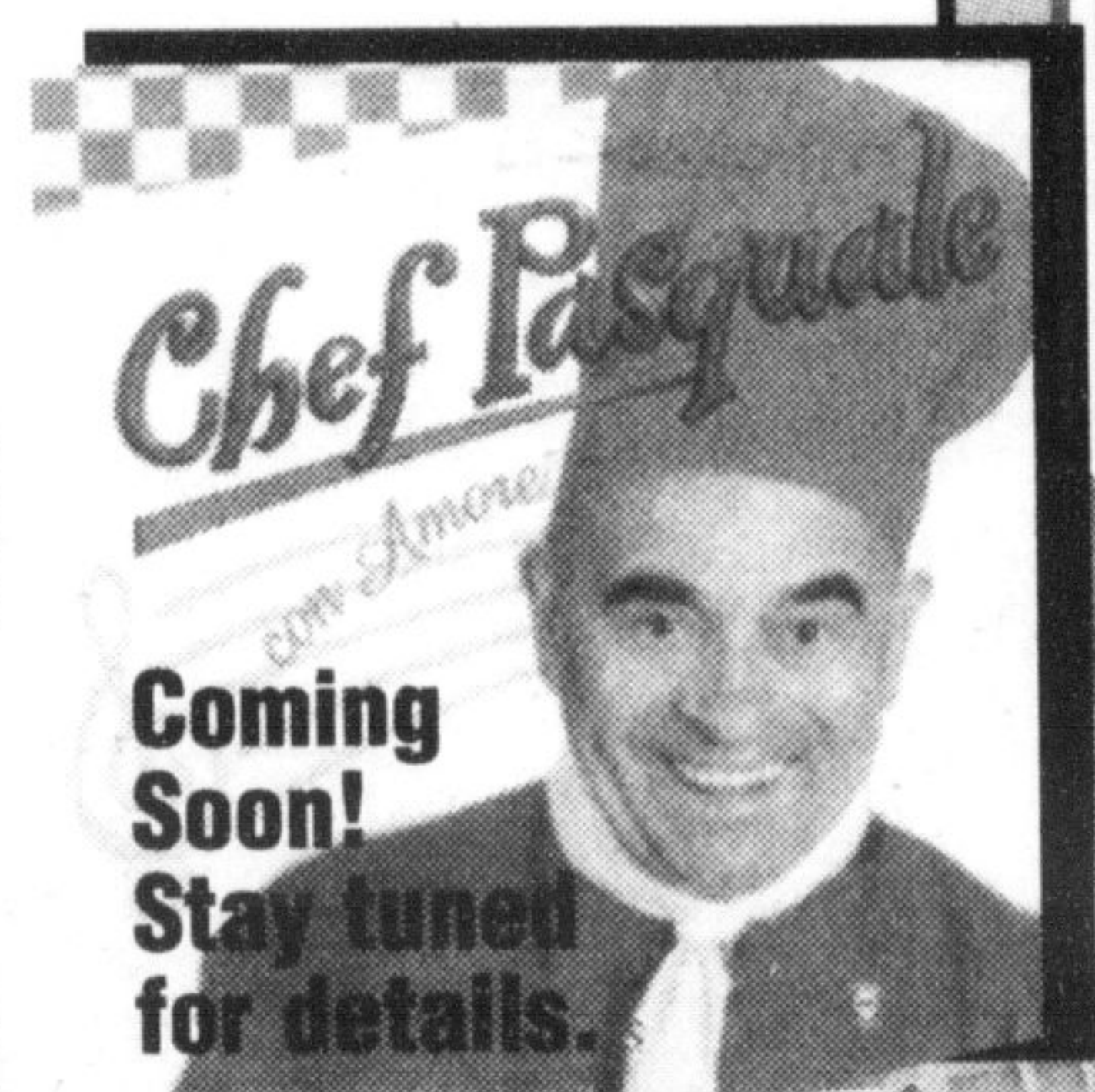
Grocery Specials

Green Tea, Summer Berry, Earl Grey, or Decaffeinated Orange Pekoe. 24 Round tea Bags

Tetley Teas \$1.49 each

Product of Italy. Solid light, packed in olive oil

Callipo Tuna \$2.99 500 g Family Pack 3x80 g



Coming Soon! Stay tuned for details.

Prices in effect September 10 - 16
327 Bronte Street S. • White Oaks Plaza
905-875-0303

Store Hours
Mon.-Thurs. 8:30 am - 7 pm
Friday 8:30 am - 8 pm
Saturday 8:30 am - 6 pm
Sunday 9:00 am - 5 pm