



MONITOR

THE HEARTBEAT OF OUR COMMUNITY

NEWS AND INFORMATION FROM MILTON DISTRICT HOSPITAL

We would like to thank our sponsors, *Halton Automotive, Bill Currie, Robert (Pie) Lee Insurance, McCuaig Insurance Ltd. and McKersie-Kocher Funeral Home Ltd.* for their wonderful support and generosity.

HOSPITAL

Great News!

The obstetrics unit at Milton District Hospital will officially reopen on Monday, July 15, 2002.

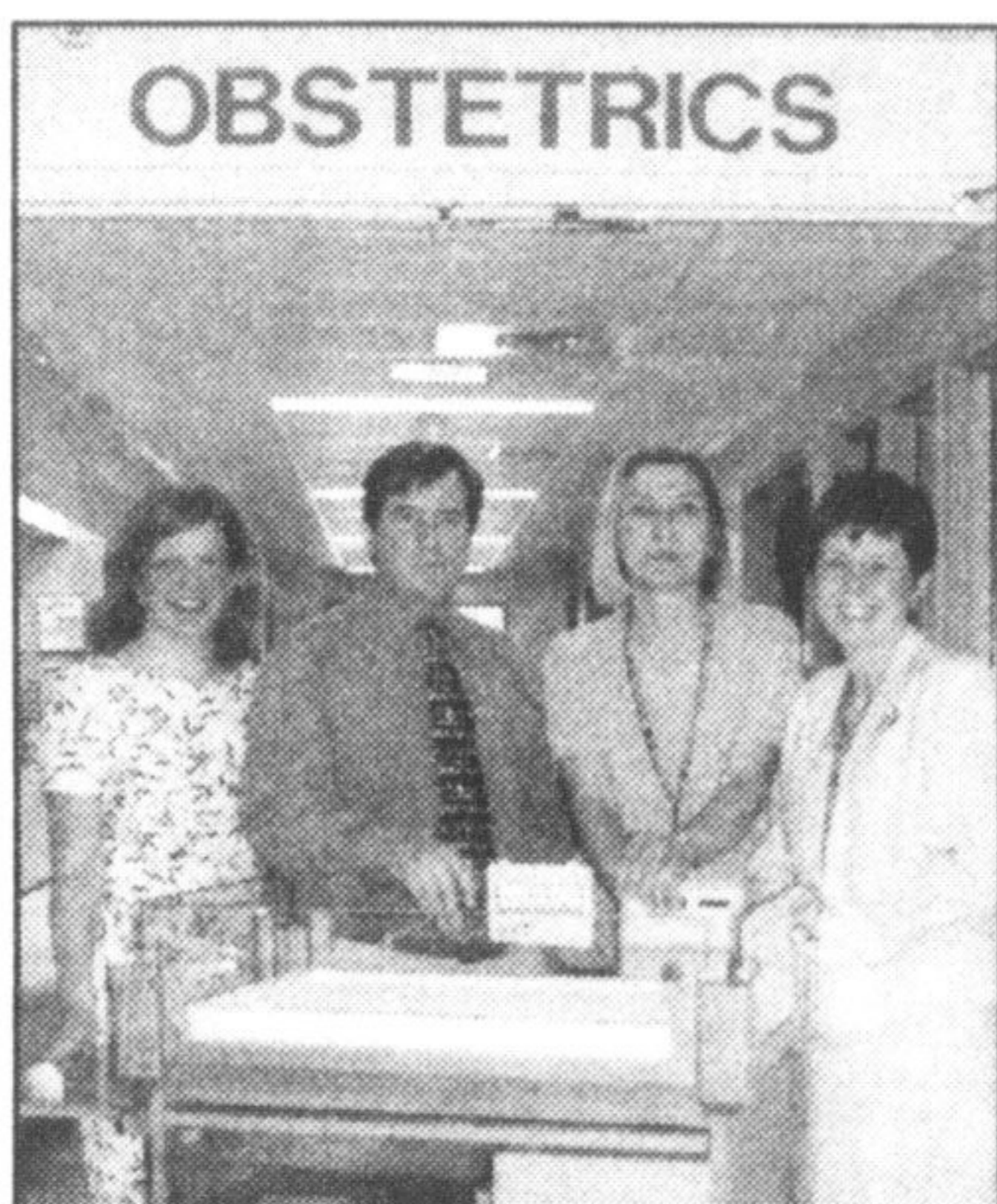
After completing 4 years of residency in Obstetrics and Gynaecology, Dr. Glen Hunter is returning to the community in which he was raised to start up the Obstetrics program at Milton District Hospital. "My vision is that someday MDH will have a thriving and expanded Obstetrical Program - one that will attract other Obstetricians, and other specialized medical professionals. There is immense potential here, since Milton is on the verge of a population explosion," says Dr. Hunter.

"We congratulate and welcome Dr. Hunter back to our community and the Milton District Hospital," says Cindy McDonell, MDH Chief Operating Officer. "These are indeed exciting times for the Milton District Hospital and the community. What a great new beginning!"

Dr. Hunter, who ran a family practice for eight years before returning to school, will be joined by Clinical Resource Nurse Jean Gallen and Patient Care Manager, Lynn Aplin.

In addition to his role at the Hospital Dr. Hunter will be providing a wide range of services from his office in the community including prenatal care, preconceptual and antepartum counseling as well as a wide range of obstetrical and gynaecological surgery.

A special Open House will be planned in July to celebrate the re-opening. Watch for details.



Bone Density Testing Now Available at MDH

Another new 'state of the art' diagnostic service has been added at Milton District Hospital. Effective Tuesday, July 2, 2002 Bone Mineral Density tests will be available in the Diagnostic Imaging Department. A bone density procedure detects the degree of bone loss with precision and accuracy. This non-invasive procedure is quick and comfortable. The new bone densitometry service is especially important to women over the age of 50 but is available to anyone who could benefit from it, regardless of age or sex. "We are really excited about this new service which will provide our community with one-stop shopping for diagnostic services related to women's health," said Merla Johnstone, Manager of the MDH Diagnostic Imaging Department. "But bone densitometry is no longer considered just a women's diagnostic test. It's now frequently being requested for men as well."

For an appointment, please call 905-876-7023.

Log on and Check Us Out!!!

Log on to the HHS Web site - www.haltonhealthcare.com - to see some exciting changes and additions. And keep your eye out for even more developments in the months to come, which will include an archived photo album of the Milton District Hospital, highlighting pictures from the very early years during the 1950s and 1960s.

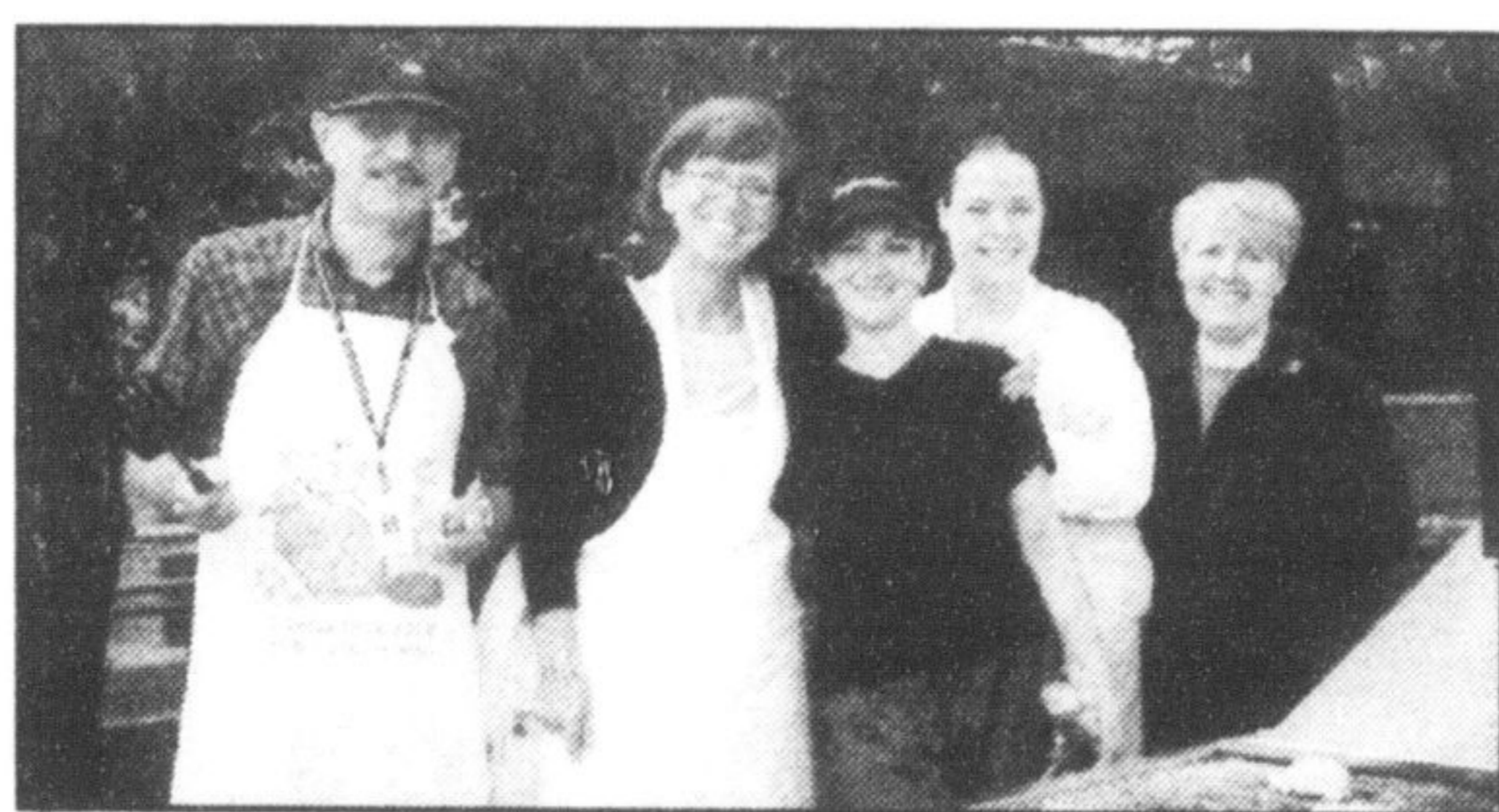
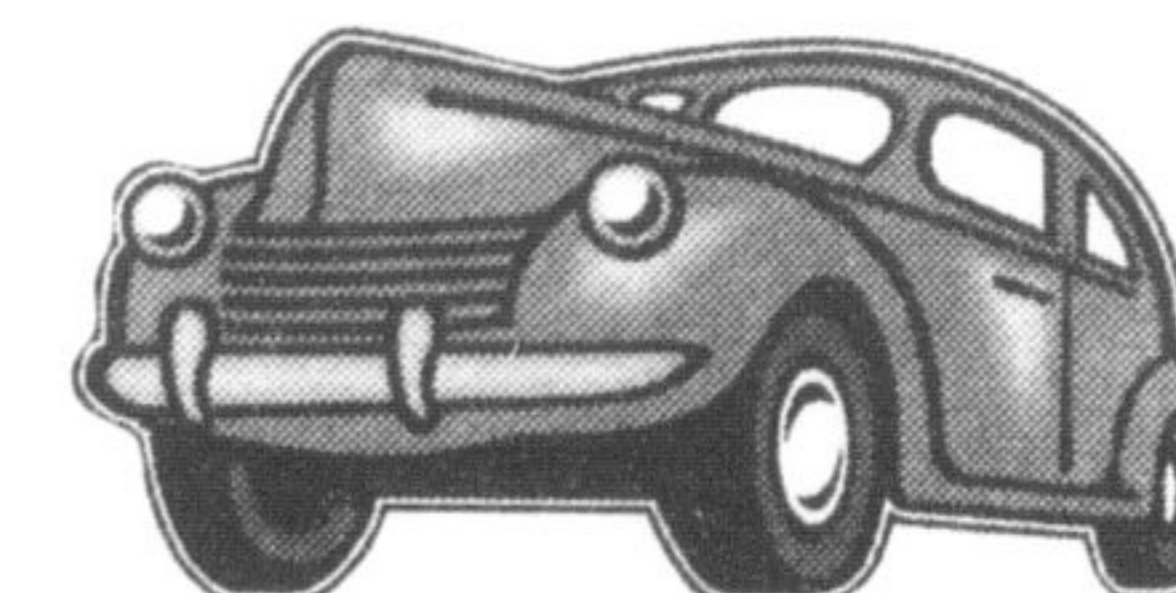
www.haltonhealthcare.com

FOUNDATION

20 YEARS
MILTON DISTRICT HOSPITAL FOUNDATION
CELEBRATING
A COMMUNITY
THAT CARES
(905) 876-7014

REMEMBER THE GOOD OLE DAYS?

Drop on over to the Canadian Tire parking lot any Sunday night after 5:30 p.m. Milton Cruise will be holding its classic car show. Remember proceeds from the 50/50 draw will be donated to the Foundation.



L to R MDHF Board Member, Michael Beaver; Foundation Coordinator, Donna McLaughlin; Food Service employees, Vicki Learmont and Jody Gillis and Diagnostic Imaging Manager, Merla Johnstone

PLEASE JOIN USTREAT YOUR STAFF TO LUNCH.....AND SUPPORT A GREAT CAUSE...YOUR HOSPITAL!

The monthly BBQ is scheduled for Thursday, July 18th between 11:30 a.m. and 1:30 p.m. The menu will be good old fashioned hamburgers with assorted toppings, cole slaw, potatoe salad, raspberry cobbler and a pop. All for \$6.00. Take out available. Just phone in your order and we will have it waiting for you and the office. (*In case of rain the BBQ will be held inside the Hospital.)

GOLF SEASON IS UPON US!

September 24th – FORE! The MDHF's Golf Classic Tournament will be held at Granite Ridge on Tuesday, September 24th. Fees are \$125 per golfer or \$500 per foursome. Sponsorships are available. Look for next month's issue of the Monitor for all the exciting plans.



The Foundation office accepts VISA, MC, American Express and all debit cards.



CONGRATULATIONS to Jennifer & Mike Gibson!
Jennifer McLean, Foundation Assistant is now Jennifer Gibson.

AUXILIARY

The MDH Auxiliary thanks the Milton community and special guests for their attendance and support at the Strawberry Fair. Appreciation is also due to the Service Clubs who participated the hospital staff, especially the Maintenance and Food Service staff who worked extremely hard to support the Fair. Thanks to each and everyone who contributed financially, donated a service or merchandise. Sincere appreciation to the craft and food vendors, the Master of Ceremonies and all the performers as well as all our Foundation and Auxiliary members. All of YOU made the Strawberry Fair a success!

P.S. Final figures aren't yet in, but watch for the next issue of the Monitor for the final tally

ANNUAL GRANT...

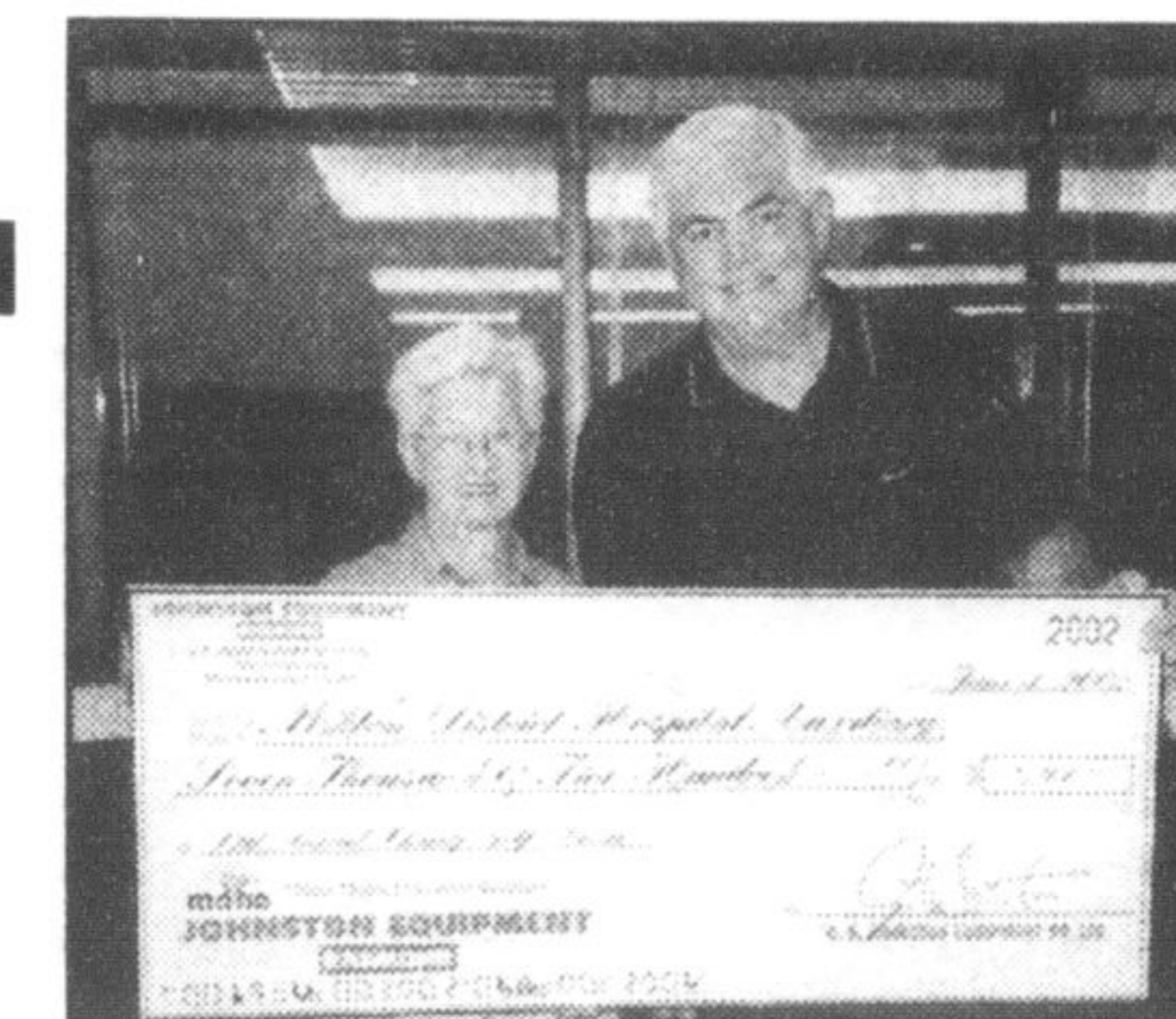
to the Hospital was \$100,000. Thank you Milton



Jessie Anderson, Mary Tufford and Helen Marsh attended the Volunteer Luncheon. Each of these ladies have served the Auxiliary for over 40 years.

HATS OFF TO JOHNSTON EQUIPMENT.....

This generous company donated \$7,500 to the MDH Auxiliary. Johnston Equipment is Canada's leading supplier of specialized material handling equipment, storage products and related systems with representation in every major Canadian city.



Martin Fabi, President and CEO of Johnston Equipment presents a cheque for \$7,500 to Rose Barrow, President of the MDH Auxiliary



MILTON DISTRICT HOSPITAL
Quality Care for a Healthier Community.