



### GMC 2002 ENVOY SLE

270-HP 4.2L I-6 Vortec Engine • 4-Speed Automatic Transmission • Dual Zone Air-Conditioning • Autotrac Automatic AWD • Power Driver's Seat • Locking Differential • Side Impact Air Bags • 17" Aluminum Wheels • Power Locks/Windows/Heated Mirrors • OnStar Safety & Security\*

OR 48 MONTH SMARTLEASE

**\$478\***

PER MONTH/\$4,195 DOWN  
PAYMENT PLUS FREIGHT  
AND SECURITY DEPOSIT

OR CASH PURCHASE PRICE

**\$37,398\***

EXCLUDES FREIGHT



**FIVE STAR SAFETY RATING.**  
GMC Envoy has a 5-Star rating for both the front and rear occupants in the side-impact test.<sup>1</sup>



# HIGH GEAR TRUCK & SUV EVENT

# NO-CHARGE AUTOMATIC

P  
R  
N  
D  
3  
2  
1

GMC

NOW WITH

**0%**  
PURCHASE FINANCING UP TO 36 MONTHS



### GMC 2002 JIMMY 2-DOOR

190-HP 4.3L Vortec V6 Engine • 4-Speed Automatic Transmission • Air-Conditioning • AM/FM Stereo CD with 6-Speaker System • Locking Differential • Aluminum Wheels • 4-Wheel ABS • Next Generation Driver and Front Passenger Air Bags

OR 48 MONTH SMARTLEASE

**\$298\***

PER MONTH/\$3,230 DOWN  
PAYMENT PLUS FREIGHT  
AND SECURITY DEPOSIT

OR CASH PURCHASE PRICE

**\$25,198\***

EXCLUDES FREIGHT



### GMC 2002 SIERRA EXTENDED CAB

270-HP 4.8L Vortec V8 Engine • 4-Speed Automatic Transmission with Overdrive and Tow/Haul Mode • 4-Wheel Disc and 4-Wheel ABS • 40/20/40 Split Front Seat with Custom Cloth Trim • Air-Conditioning • AM/FM Stereo with CD • Locking Differential • Tachometer, Engine Hour Meter & Driver Message Centre • Deep-Tinted Glass

OR 36 MONTH SMARTLEASE

**\$338\***

PER MONTH/\$3,390 DOWN  
PAYMENT PLUS FREIGHT  
AND SECURITY DEPOSIT

OR CASH PURCHASE PRICE

**\$28,198\***

EXCLUDES FREIGHT

### GMC 2002 SONOMA EXTENDED CAB SPORT

180-HP 4.3L Vortec V6 Engine • 4-Speed Automatic Transmission with Overdrive • 4-Wheel ABS • 3rd Door • Sport Package including: Sportside Box, 16" Aluminum Wheels, Sport Suspension and Bucket Seats • Air-Conditioning • AM/FM Stereo with CD • Tilt-Wheel and Cruise Control • Tachometer

**SPORT**

48 MONTH SMARTLEASE

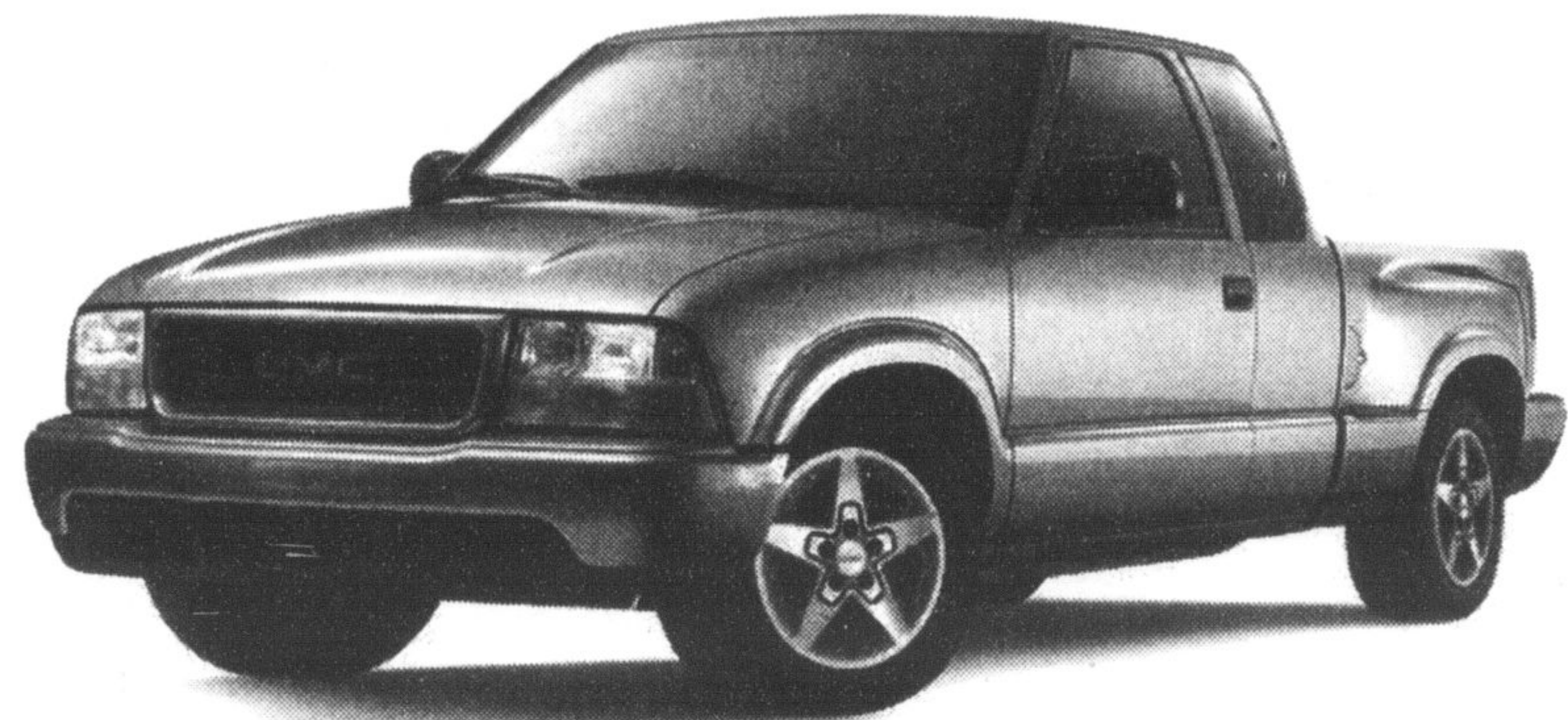
**\$268\***

PER MONTH/\$2,230 DOWN  
PAYMENT PLUS FREIGHT  
AND SECURITY DEPOSIT

PURCHASE PRICE

**\$23,598\*\***

EXCLUDES FREIGHT



**ALSO SEE YOUR DEALER FOR GREAT DEALS ON MANUAL TRANSMISSION TRUCKS.**

PONTIAC  
BUICK  
GMC

GM

For the latest information, visit us at [gmcanada.com](http://gmcanada.com), drop by your local Pontiac • Buick • GMC Dealer or call us at 1-800-GM-DRIVE.

\*General Motors will provide the Dealer with a credit equivalent to the value of automatic transmission: GMC Sonoma (\$1,140)/GMC Jimmy (\$994)/GMC Envoy, Envoy XL (\$994)/GMC Sierra 1500 Series Pickups Regular and Extended Cab, 1500 HD Crew Cab, GMC Sierra Denali Y91 (\$1,114)/GMC Sierra 2500 Series - CC25903 with C6P, TC25903 with C6P, CK25753 with C6P, TK25753 with C6P (\$1,114). General Motors will also pay the Dealer the equivalent GST on these credits. These credits have already been applied to the "Cash Purchase Prices" and SMARTLEASE payments contained within this advertisement. Offer applies to vehicles delivered on or before July 2, 2002. \*OnStar Safety and Security Plan is included on Envoy SLE R7A for one year. Service contract required. OnStar uses existing service providers as well as cellular and satellite technologies. Vehicle electrical system needs to be operating for features to function properly. †Tests conducted by the US National Highway Traffic Safety Administration (NHTSA). \*\*Offers based on Envoy SLE R7A/Jimmy 2-Door R7C/Sierra Ext. Cab R7F/Sonoma Ext. Cab R7B. Annual cost of borrowing is 6.4%/3.9%/5.4%/5.9% per annum based on a 48/48/36/48 month term. Annual kilometre limit of 20,000 km, \$0.12 per excess kilometre. Option to purchase at lease end is \$17,919/\$11,898/\$17,085/\$12,479 plus applicable taxes. Other lease options available. ††Freight (\$875/\$875/\$1,000/\$850 - Envoy SLE R7A/Jimmy 2-Door R7C/Sierra Ext. Cab R7F/Sonoma Ext. Cab R7B) not included. Licence, insurance, PPSA, administration fees, environmental taxes and taxes not included. Dealers are free to set individual prices. †The SMARTLEASE monthly payment and the GMAC purchase finance rate are not available with and are not calculated on the "Cash Purchase Price" shown. The difference between the price for

the SMARTLEASE/GMAC Purchase Finance offer and the "Cash Purchase" offer is deemed under provincial disclosure laws to be a cost of borrowing, whether or not the same represents actual interest, and is required to be expressed as an annual percentage rate which is 1.72%/3.79%/2.28% (Envoy SLE R7A/Jimmy 2-Door R7C/Sierra Ext. Cab R7F). †Purchase financing available on approved GMAC credit only. 0% financing available up to 36 months (Envoy SLE R7A/Jimmy 2-Door R7C/Sierra Ext. Cab R7F/Sonoma Ext. Cab R7B). Example: \$10,000 at 0% APR, the monthly payment is \$277.78 for 36 months. Cost of borrowing is \$0. Total obligation is \$10,000. Down payment and/or trade may be necessary. Monthly payment and cost of borrowing will vary depending on amount borrowed and down payment/trade. †††Offers apply as indicated to new or demonstrator 2002 models of Envoy SLE R7A/Jimmy 2-Door R7C/Sierra Ext. Cab R7F/Sonoma Ext. Cab R7B equipped as described. Offers apply to qualified retail customers in the Ontario Pontiac • Buick • GMC Marketing Association area only (including Outaouais and excluding Northwestern Ontario). Dealers are free to set individual prices. Dealer order (on Cash Purchase and Lease offers only) or trade may be required. Limited time offer which may not be combined with other offers. Certain exceptions apply. See your local Pontiac • Buick • GMC Dealer(s) for conditions and details.

