

Former Milton bowling league members invited to reunion this Saturday

By **FANNIE SUNSHINE**
The Champion

When Evelyn Callan and her husband moved to Milton from Hamilton in 1957, they were looking for ways to meet people.

So the couple decided to join the local five pin bowling league, which was located upstairs of the White Rose gas station at Main and Commercial streets (now Carriage Square).

"There were women's leagues, men's leagues, mixed leagues and children's leagues," Ms Callan recalled. "We didn't know anyone and if we hadn't joined, we would have been so lonely. It was a saving grace."

She said the bowling alley was moved to Main and Prince streets later that year and remained in operation until 1986.

"I really don't know why it was shut down and I'm really surprised one hasn't popped up since then. I thought it was a terrible loss when it closed. I think it should be brought back for the kids."

This Saturday, a banquet reunion will be held for the women's bowling leagues (1947-1986) at the Royal Canadian Legion, 21 Charles St. (upper level).

"Any woman who bowled in that time frame is invited to come," Ms Callan said.

"(The bowling leagues) used to hold dances and banquets all the time."

Tickets for the banquet can be obtained by calling (905) 878-6917, (905) 878-2719, (905) 878-9098, (905) 878-9588, (905) 878-0615, (905) 878-3045 and (905) 878-2163.

Housing development gets initial approval by planning committee

An 18.9-hectare residential development moved closer to construction last week, with zoning bylaw approvals from the Milton administration and planning committee.

The project by Greywood Development is planned for lands west of Fourth Line and north of the CP Rail line and will include 364 dwelling units.

While the majority of the land currently carries an agricultural

Council Briefs

zoning, the committee approved a new medium density residential zoning.

Town council has yet to ratify the re-zoning, but was expected to address the issue last night.

...

A commercial plaza planned for the intersection of Derry Road and

Trudeau Drive — in Hawthorne Village — grew a little last week.

Milton's administration and planning committee approved a request to increase the plaza from 950 square metres to 1,550 square metres during a public meeting June 10. No speakers rose in opposition to the proposal.

The Mattamy Homes development — which is slated to contain seven businesses — can now move forward in the planning process.

Local Rotarians headed for Spain

Three representatives of the Rotary Club of Milton will be among 20,000 Rotarians from 65 countries attending the Rotary International Conference in Barcelona, Spain next week.

President Ries Boers and his wife Muriel, vice-president

Carolyn Keyworth and Pamela Morrison will attend the conference June 24 to 27.

After their return, the participants will discuss ideas generated during the conference at the July 1 Rotary Club of Milton meeting.

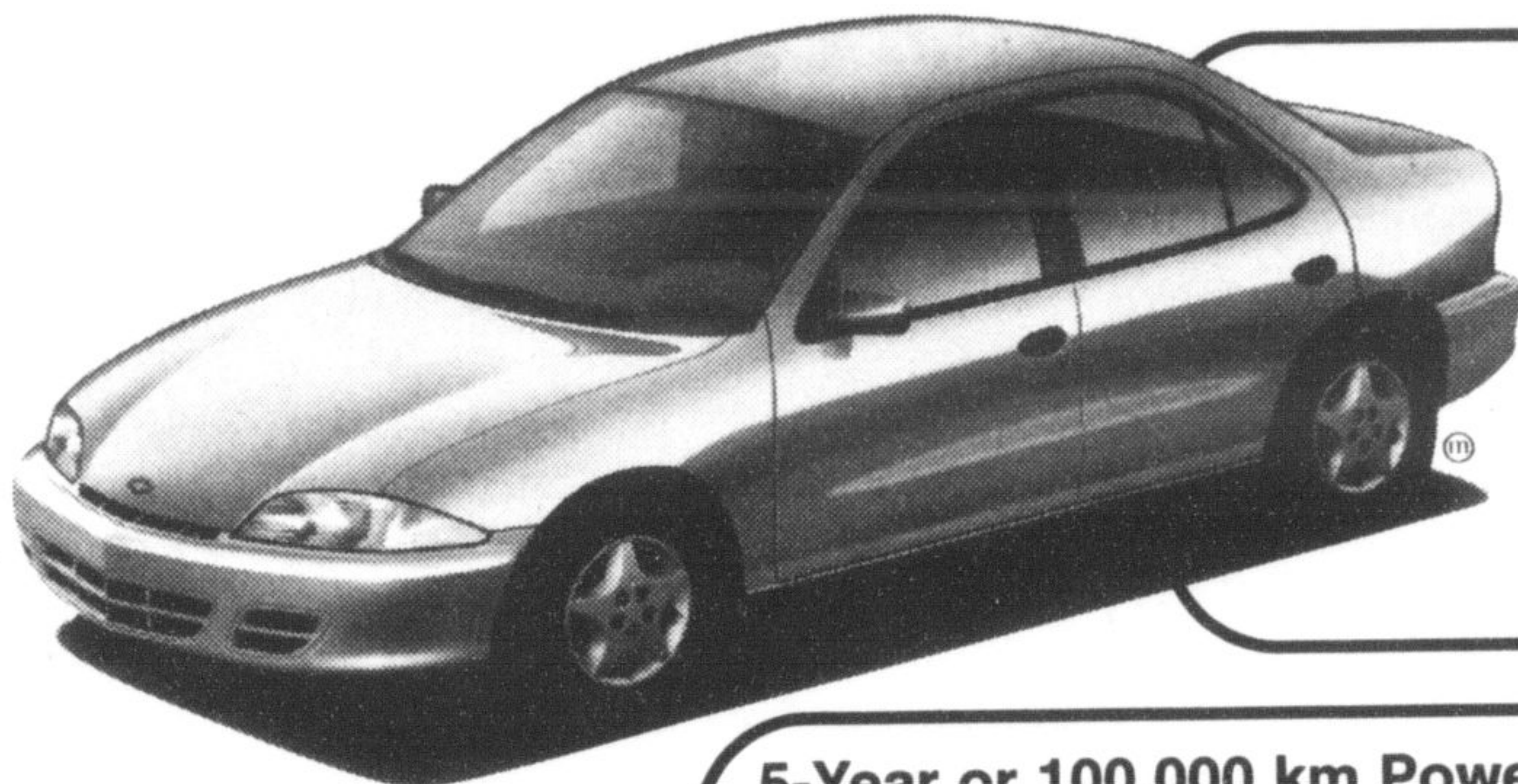
Topics of discussion will be of

universal significance including literacy, hunger, youth development, international education and polio eradication.

The local trio's trip was made possible by a grant from Milton's Community Fund.

You won't believe your eyes

2002 CAVALIER VL



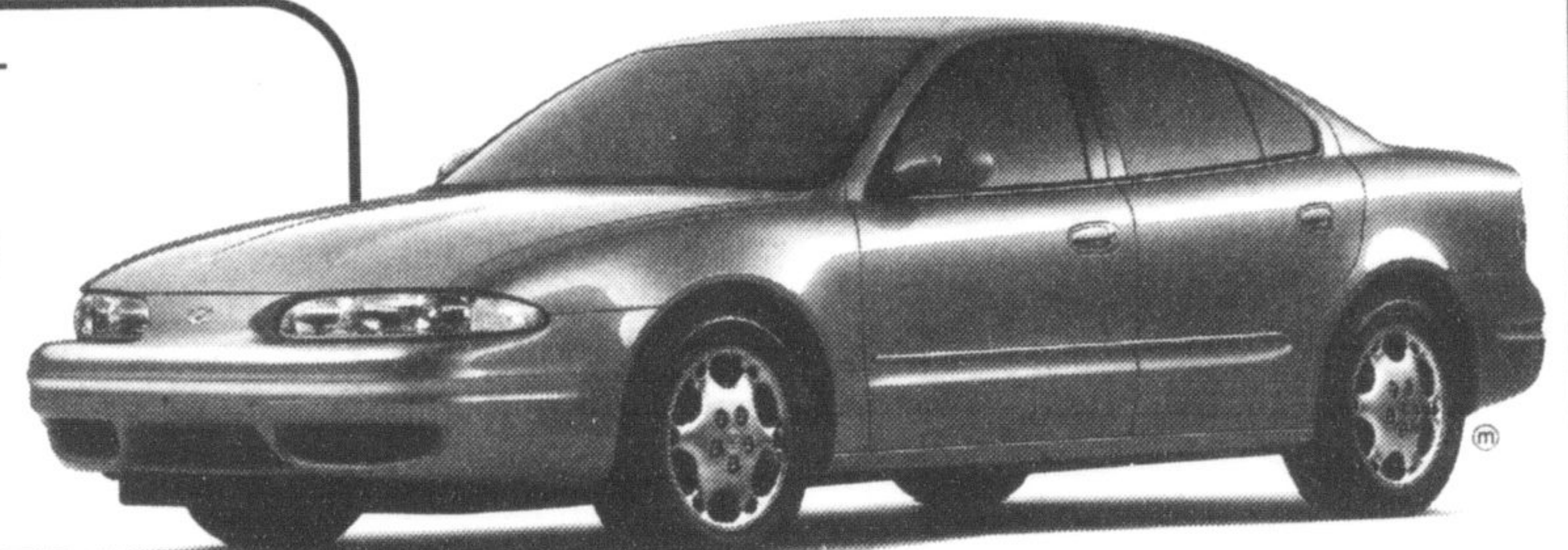
5-Year or 100,000 km Powertrain Warranty • 2.2 Litre L4 SFI Engine • 5-speed Getrag Transmission • 4-Wheel Anti-Lock Brakes • PASSLock Theft Deterrent System • Electric Trunk Release • Dual Front Air Bags • Rear Spoiler (on Coupes only)

\$11,898 CASH PURCHASE PRICE EXCLUDES FREIGHT

LOW LEASE PAYMENTS

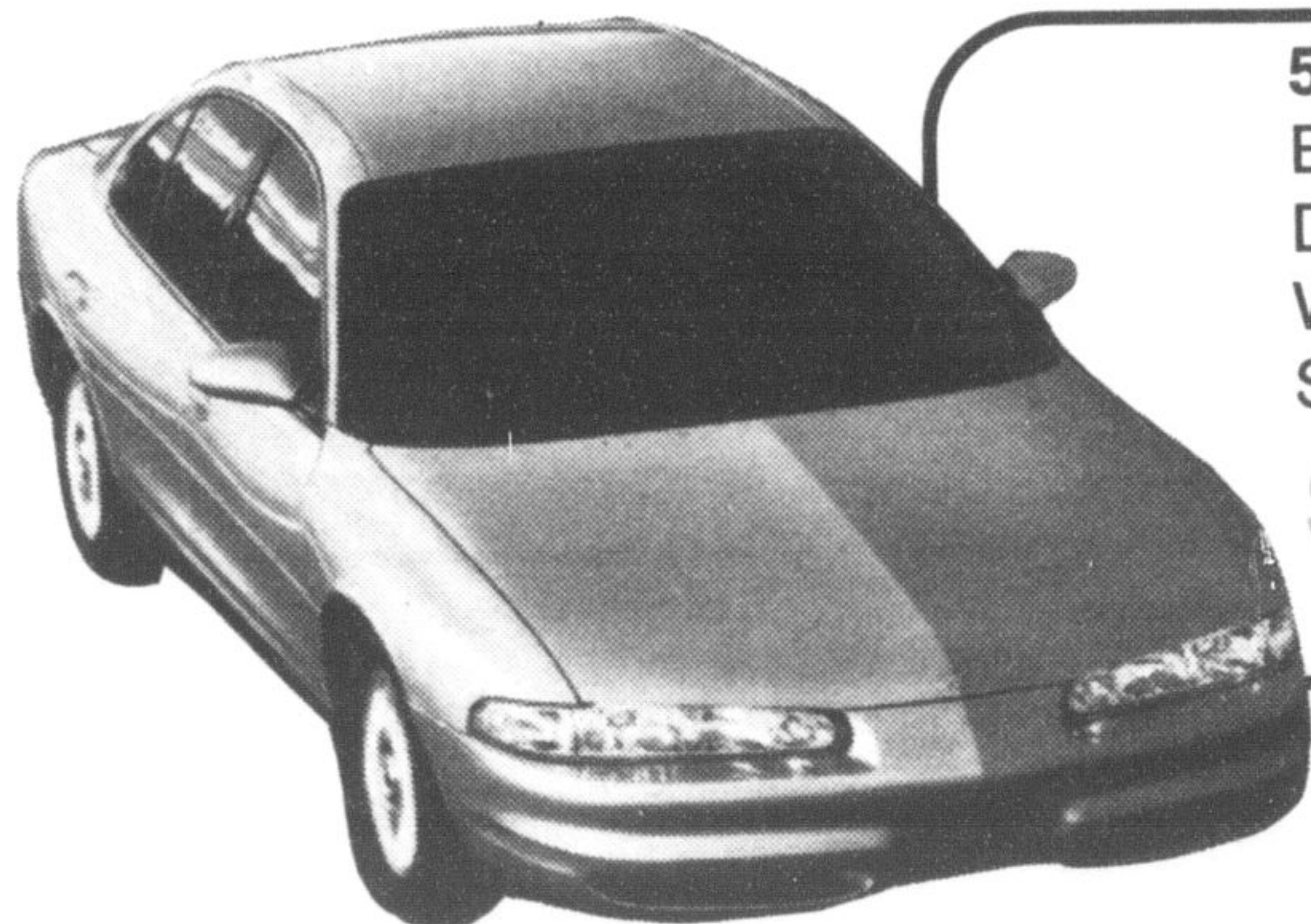
5-Year or 100,000 km Powertrain Warranty • 2.2 Litre DOHC All-New Ecotec Engine • Automatic Transmission with Enhanced Traction Control • Air Conditioning • AM/FM Stereo CD with 6-Speaker System • Cruise Control • Power Driver's Seat • 4-Wheel Disc Brakes with ABS • And More

\$19,998 CASH PURCHASE PRICE EXCLUDES FREIGHT



2002 ALERO GX SEDAN

2002 INTRIGUE



5-Year or 100,000 km Powertrain Warranty • 3.5 Litre Twin Cam 215HP V6 Engine • 4-Speed Automatic Transmission • Air Conditioning • 6-Way Power Driver's Seat • AM/FM RDS Stereo with 6-Speaker System • Power Windows/Door Locks/ Trunk Release • 4-Wheel Disc Brakes with ABS • Steering Wheel-mounted Cruise Control

\$23,998 CASH PURCHASE PRICE EXCLUDES FREIGHT

*Cash sale prices are plus freight, (Cavalier \$795, Intrigue \$950, Alero \$845) and all applicable taxes and license and cannot be combined with special finance rates.

Main St.	
	Hwy 25/Ontario St.
Derry Rd	RICHARDSON CHEVROLET-OLDSMOBILE

RICHARDSON CHEVROLET-OLDSMOBILE
HWY. 25 S. AT DERRY RD., MILTON

878-2393