

Drumquin Park master plan gets initial approval

By RICHARD VIVIAN
The Champion

The restructuring of Drumquin Park in south Milton moved closer to fruition last week, with the Milton community services committee giving the green light to a new master plan.

"We really want to increase the overall awareness and use of the park with this (master plan)," said Jeff Fraser, project manager for the Town.

With plan approval, the park is slated to see significant changes in the coming years, including the relocation of the Track 2000 BMX Club facility and restructuring of two existing softball diamonds.

Further improvements will see the driveway upgraded, playground equipment installed and a new trails network built. Street

signage is also planned to boost the public profile of the park.

Budget approval in January set aside \$175,000 — provided Superbuild Funding is approved — for the first phase of the park re-construction set to begin in September or October.

Should Superbuild Funding from the federal government be denied, a further report to the committee will be submitted suggesting alternative funding solutions.

Phase One essentially revolves around the relocation of Track 2000 — moving the facility from the centre of the park to a more southern location — and the driveway realignment.

Further park reconstruction is slated for next year, pending 2003 budget approval.

Though continued use of the park by the Oakville Model Flying Club is currently being negotiated, there will be a time when its activities will come in conflict with other park activities, said Mr. Fraser.

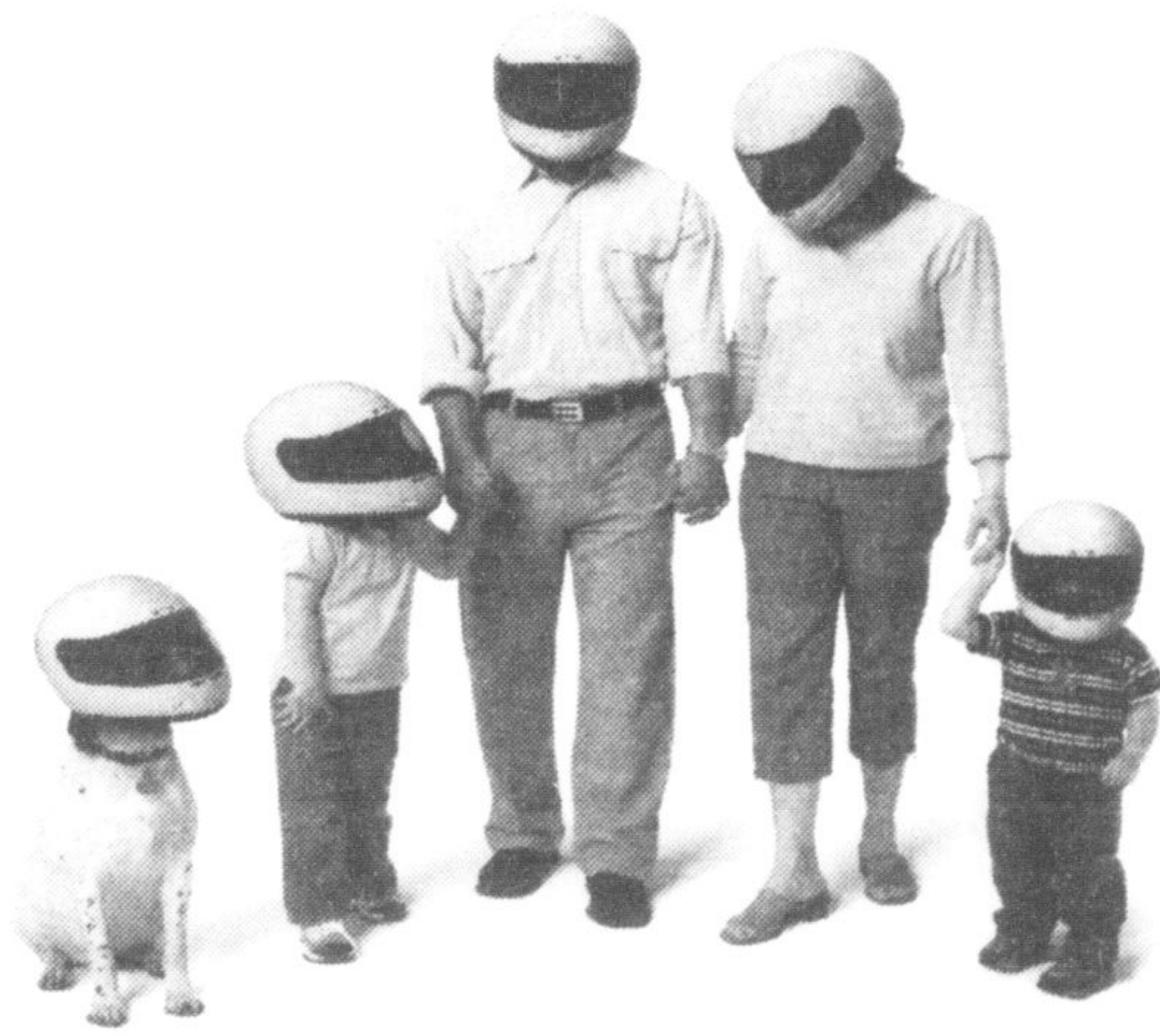
"There is long-term potential conflicts with other park users in terms of air space and noise," the project manager stated. "And the land they use (for take-offs and landings of their model planes) is considerable."

But the club would much rather stay than leave, responded vice-president Brian Anderson. The club has used the park — located on Trafalgar Road, north of Britannia Road — for 35 years and has groomed the area for its purpose, as well as conducted upkeep activities in other park areas.

If allowed to stay, the club is willing to adopt the future trails network.

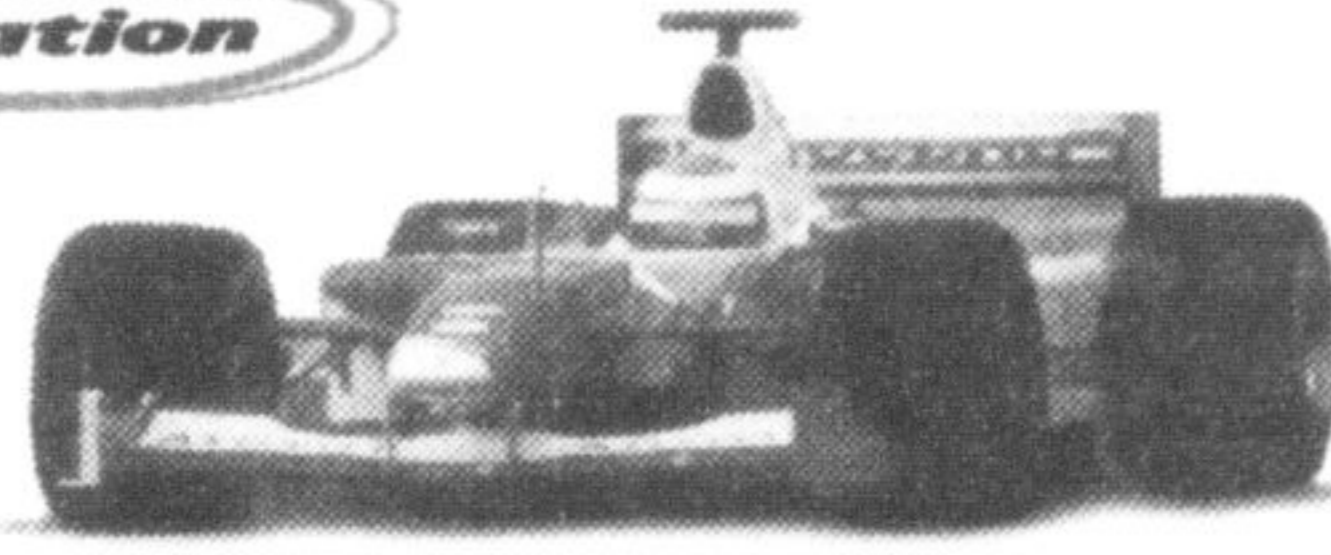
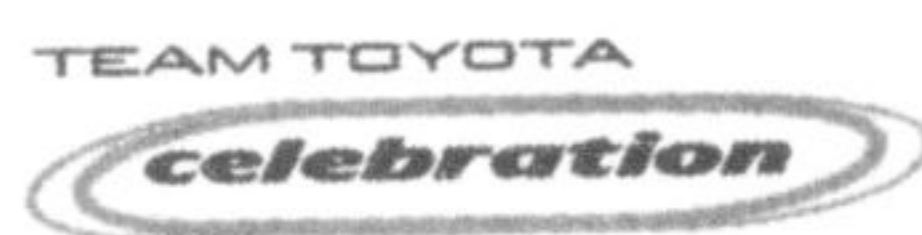
"We have no problems adopting the trails. We'll send out our students with garbage bags to collect garbage and such," Mr. Anderson said, adding that if the club is eventually kicked out of Drumquin it will need the Town's help in finding a new location.

Town council has yet to address the master plan, but is expected to look at the issue Monday.



Toyota Racing Days are here.

\$50,000,000+ MSRP***



2002 Toyota F1
LEASE FOR \$694,469.00***

PER MONTH FOR 48 MONTHS WITH \$5,000,000 DOWN
= Toyota V10/90/2998 cc (RV1-01) engine = Magneti Marelli electronics = Michelin Pilot tires = 6 speed semi-automatic gear box = Sachs tripple plate clutch = Carbon chassis (TF101)
The entire Toyota Team is excited to be involved in racing this season. It's our chance to test new technologies and push ourselves to the limit. And what we learn on the track, we apply to the vehicles you drive. In celebration, our dealership teams would like to invite you to come take a race-inspired Toyota out for a test lap and feel the spirit that comes from being a part of Team Toyota Celebration.
*** Sorry, actual F1 car not for sale or lease

\$14,420 MSRP

0.9%
PURCHASE FINANCING**



2002 Toyota Echo
LEASE FOR \$189.00 NO MONEY DOWN NO SECURITY DEPOSIT

PER MONTH FOR 60 MONTHS (24,000 KM PER YEAR)
FOR AN ADDITIONAL \$15.99 PER MONTH GET AUTOMATIC TRANSMISSION
= Hwy fuel consumption rating of 5.2L/100 km (54 mpg) * = 60/40 split rear seat
= AM/FM stereo/CD with 4 speakers = 1.5 Litre, 16 Valve, 108 HP, DOHC VVT-i engine
= Tilt steering = Power steering = 5 speed manual transmission
= 2 speed wipers with mist feature

\$17,300 MSRP



ALL NEW
2003 Toyota Corolla CE
LEASE FOR \$229.00

PER MONTH FOR 48 MONTHS WITH \$2710 DOWN
FOR AN ADDITIONAL \$15.99 PER MONTH GET AUTOMATIC TRANSMISSION
= 6 time winner of the CAA Pyramid Award for overall vehicle ownership satisfaction.**
= Air conditioning = 5 speed manual transmission = Power door locks & mirrors
= Advanced 130 HP VVT-i engine = AM/FM stereo/CD with 4 speakers = 60/40 split folding rear seat
= Remote keyless entry = Tilt steering = Dual stage driver & passenger air bags

\$24,800 MSRP



2002 Toyota Camry LE
LEASE FOR \$339.00

PER MONTH FOR 48 MONTHS WITH \$3810 DOWN
= 2.4 Litre 157 HP, VVT-i engine = 4 speed automatic with overdrive
= Air conditioning = Power windows, locks & mirrors = Cruise control
= Tilt steering = AM/FM cassette CD with 6 speakers = 60/40 split folding rear seat
= Keyless entry = Engine immobilizer

\$29,335 MSRP

2.9%
PURCHASE FINANCING**



2002 Toyota Sienna CE plus
LEASE FOR \$299.00

PER MONTH FOR 48 MONTHS WITH \$4995 DOWN
= Safest minivan ever tested by the I.I.H.S.† = 3.0 Litre V6, 210 HP, VVT-i engine = Dual sliding doors
= Sliding third row seat = AM/FM cassette CD = Dual air conditioning = Power windows, locks & mirrors
= Cruise control = 4 wheel ABS = Remote keyless entry = Engine immobilizer

MILTON TOYOTA

400 Steeles Avenue (next to Gorrud's Auto Group) 905 875-1700



Legal for 2002 Echo, 2003 Corolla, 2002 Camry, 2002 Sienna: Leasing / financing plans from Toyota Credit Canada Inc. O.A.C. Offers valid on new 2002 & 2003 models leased or purchased by July 31, 2002. License, registration, insurance and taxes extra. Lease includes freight and P.D.E. cost of \$960, \$1,010, \$1,110, \$1,260. Freight and P.D.E. not included in M.S.R.P. Based on 60 mos. walkaway lease at a rate of 2.9% on Echo (Model BT123MA or BT123PA). Based on 48 mos. walkaway lease at a rate of 8.9%, 8.9%, and 3.9% on Corolla, Camry, Sienna (models BR32EMB & BE32EPB, BE32KPA ZF19CSB (includes \$1,000.00 lease allocation)). Down payment of \$0, \$2,710, \$3,810, \$4,995 or trade equivalent required. Security deposit of \$275 or 300, \$400, \$350 on Corolla, Camry, and Sienna respectively. First payment and security deposit due on delivery. Total lease obligation of \$11,340 or \$12,300, \$13,702 or \$14,470, \$20,082, \$19,347 and purchase option price of \$5,335.40 or \$5,705.40, \$8,996.00 or \$9,516.00, \$11,904.00, \$13,200.75 based on a maximum of 96,000 KMS and 120,000 KMS for Echo. Additional KM charge of \$.07, .07, .10, .10 if applicable. M.S.R.P. of \$14,420 or \$15,420, \$17,300 or \$18,300, \$24,800, \$29,335. Finance example: \$20,000 at 0.9%/2.9% per annum equals \$563.30/\$580.74 per month for 36 months. C.O.B. is \$278.80/\$906.64 for a total obligation of \$20,278.80/\$20,906.64. *According to the overseas registration and compliance department of Toyota Motor Corporation (Engineering administration division). **2001 CAA Pyramid Award for overall vehicle satisfaction for 1993 - 1997 & 2002 model years. †Based on U.S. Insurance Institute for Highway Safety (I.I.H.S.), 1998 40mph 40% frontal offset crash tests. For complete test results visit www.hwysafety.org. †10.9%/2.9% no limit purchase financing for up to 36 months available on new 2002 Echo/Sienna models. ***Actual F1 car not for sale or lease. See Milton Toyota for complete details.

Hire a Student Week

It's time to hire a student.

The Milton Human Resource Centre of Canada for Students (HRCC-S) will host its annual 'Hire a Student Week' next week.

"Hire a Student Week is a region-wide initiative for HRCC-S," said Anne-Marie Chiles, supervisor of the centre in Milton.

"Since 1968, young people have come to us for help in finding summer employment. Hire a Student Week is a way to highlight the importance of getting that first job for some students, or finding career-related work experience for others."

Last Year, the Milton HRCC-S, located in Trafalgar Square on Main Street, filled more than 350 jobs with secondary and post-secondary students.

The centre link youth and employers and provide people with job postings, interview advice, resume building and job search strategies for free.

To help kick off the week, the Georgetown and Milton centres will host a charity barbecue Wednesday at Guelphview Square, 232 Guelph St., in Georgetown from 11 a.m. to 2 p.m.

For more information, call (905)878-8418, ext. 214.

Royal LePage Real Estate Services Ltd., Broker
388 Main St. E., Milton
ROYAL LEPAGE
(905) 878-8101



*Lois Hagwick**

A signature you can count on

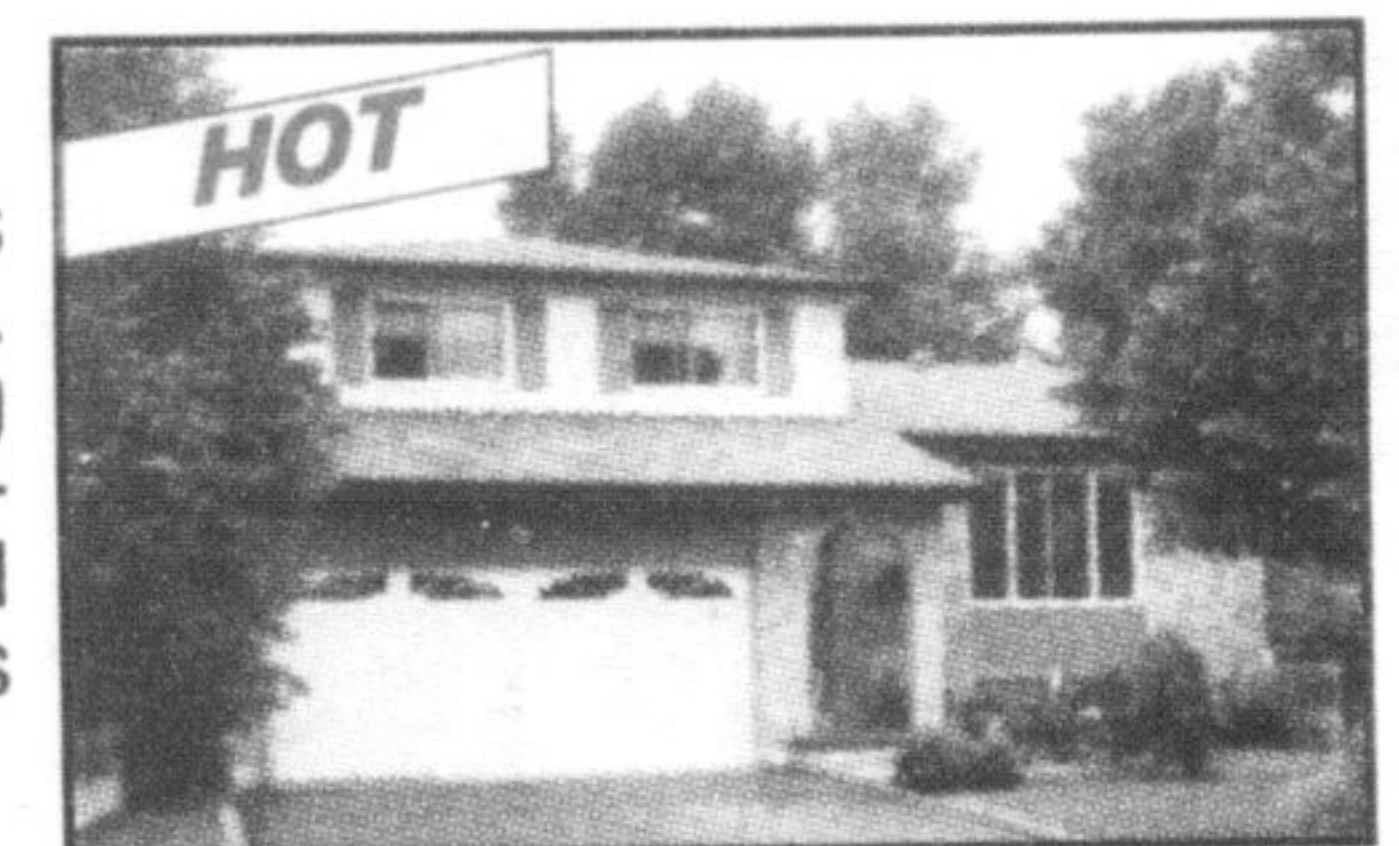


Award winner since 1986

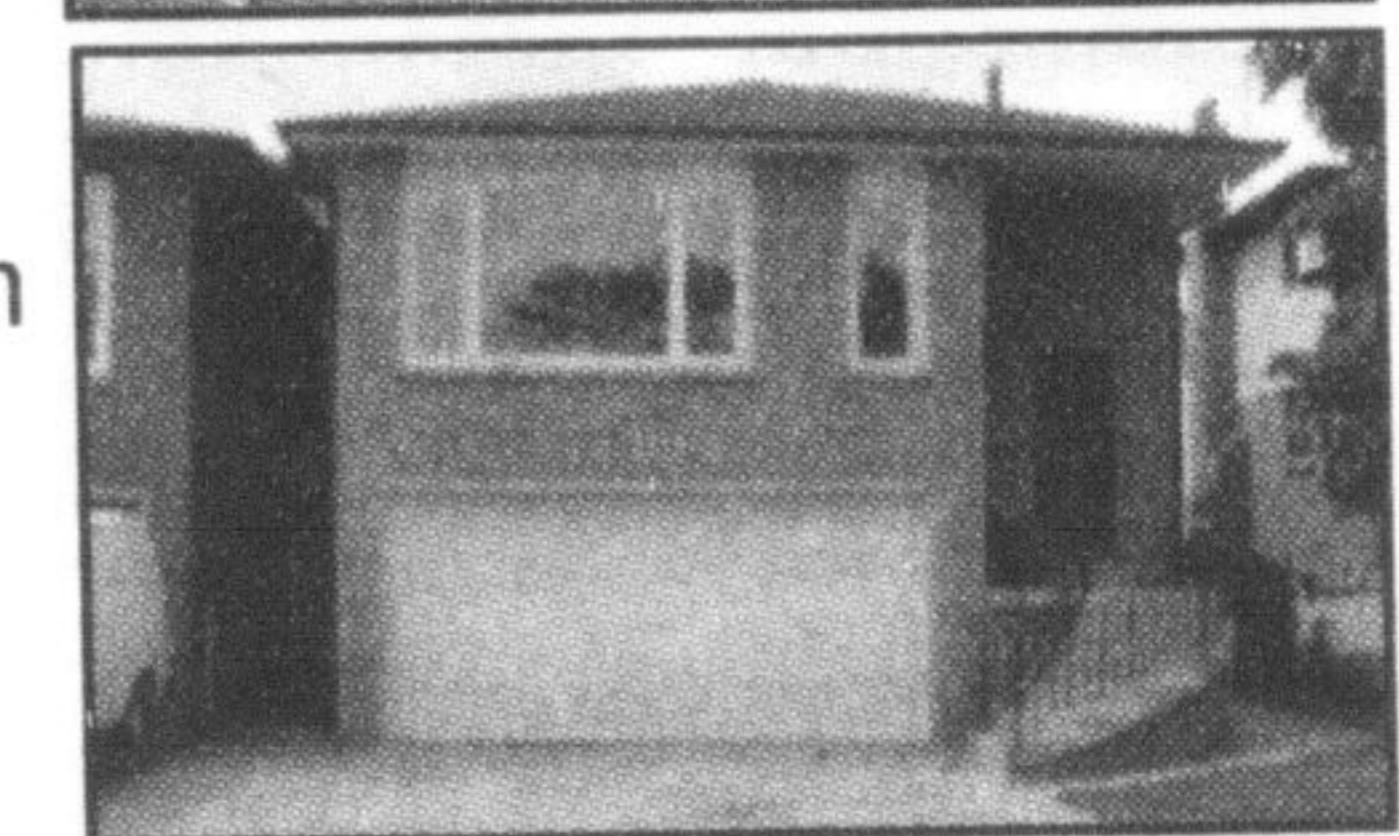
Proud to be "Business Woman of the Year" 2001.

STUNNING - \$354,900

This 5-level side split has been totally updated thru-out. 4 new baths, maple flooring in LR & DR, ceramics, 2 fireplaces, sparkling inground pool, sunporch & decks. This home shows a "12".



Beautiful backsplit on quiet crescent.



QUIET CRESCENT

A very nicely updated 3 bedroom side split set on a gorgeous treed lot. Features a 2-tiered deck set among the maples, updated windows, natural gas & central air, a finished lower level for added space, plus hardwood in LR & DR. A great buy at \$242,900.



A PIECE OF HEAVEN

This 3 bdrm 2 bath bungalow sits high on 3 gorgeous treed acres. Beautifully updated inside & out. Finished rec rm with a woodstove & walkout to lower patio. Wrap around deck, perennial gardens, plus a master bdrm walkout. The size will surprise you. \$278,900.



OPPORTUNITY IS KNOCKIN'

This more than spacious home is a bargain for those who like a project. There is also a 23'x11' at home office space, teen suite or workshop set in the "olde" section close to downtown. Only \$198,900.

