



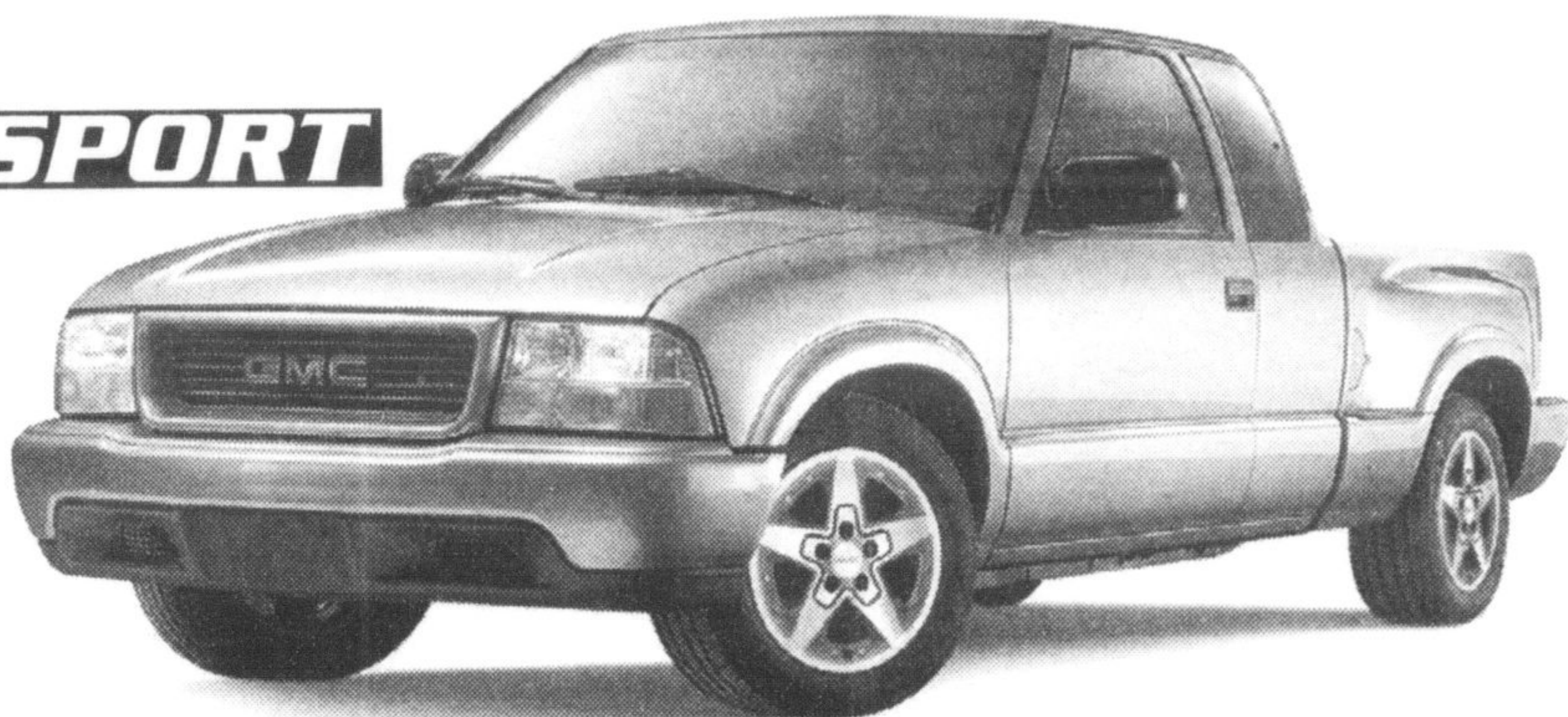
HIGH GEAR TRUCK & SUV EVENT NO-CHARGE AUTOMATIC[¥]

GMC

P
R
N
D
3
2
1

NOW WITH
+ **0%**[‡]
PURCHASE FINANCING
UP TO 36 MONTHS

SPORT



GMC 2002 SONOMA EXTENDED CAB SPORT

180-HP 4.3L Vortec V6 Engine • 4-Speed Automatic Transmission with Overdrive • 4-Wheel ABS • 3rd Door • Sport Package including: Sportside Box, 16" Aluminum Wheels, Sport Suspension and Bucket Seats • Air-Conditioning • AM/FM Stereo with CD • Tilt-Wheel and Cruise Control • Tachometer

48 MONTH SMARTLEASE

\$268*

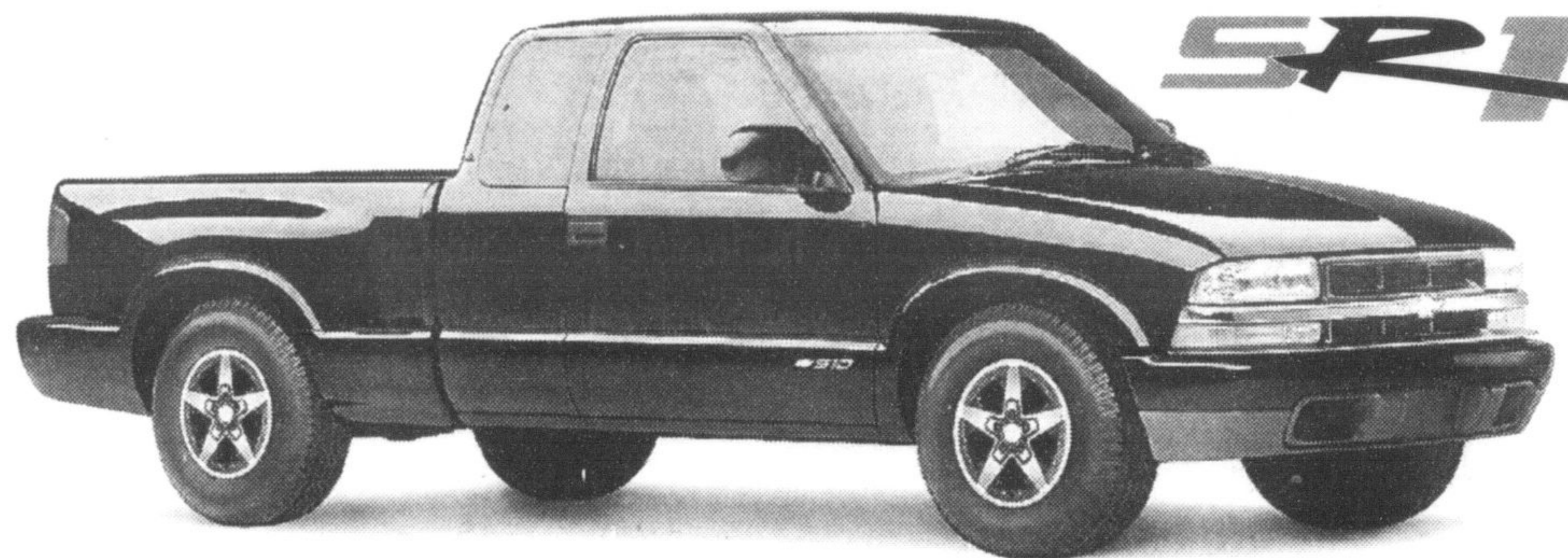
per month/\$2,230 Down
Payment PLUS Freight &
Security Deposit

PURCHASE PRICE

\$23,598†

Excludes Freight

SR1



CHEVROLET 2002 CHEVY S-10 EXTENDED CAB

180-HP 4.3L Vortec V6 Engine • 4-Speed Automatic Transmission with Overdrive • 4-Wheel ABS • 3rd Door • Sport Package including: Sportside Box, 16" Aluminum Wheels, Sport Suspension and Bucket Seats • Air-Conditioning • AM/FM Stereo with CD • Tilt-Wheel and Cruise Control • Tachometer

48 MONTH SMARTLEASE

\$268*

per month/\$2,230 Down
Payment PLUS Freight &
Security Deposit

PURCHASE PRICE

\$23,598†

Excludes Freight

ALSO SEE YOUR DEALER FOR GREAT DEALS ON MANUAL TRANSMISSION TRUCKS



For the latest information, visit us at gmc.canada.com, drop by your local Chevrolet • Oldsmobile or Pontiac • Buick • GMC Dealer or call us at 1-800-GM-DRIVE.

¥Offer applies to vehicles delivered on or before July 2, 2002. General Motors will provide the Dealer with a credit equivalent to the value of automatic transmission: Chevy S-10, GMC Sonoma (\$1,140)/Chevy Blazer, GMC Jimmy (\$994)/Chevy TrailBlazer, TrailBlazer EXT, GMC Envoy, Envoy XL, Oldsmobile Bravada (\$994)/Chevy Silverado, GMC Sierra 1500 Series Pickups Regular and Extended Cab, 1500 HD Crew Cab, GMC Sierra Denali Y91 (\$1,114)/Chevy Silverado, GMC Sierra 2500 Series - CC25903 with C6P, TC25903 with C6P, CK25753 with C6P, TK25753 with C6P (\$1,114)/Chevy Avalanche (\$1,114). General Motors will also pay the Dealer the equivalent GST on these credits. These credits have already been applied to the SMARTLEASE payments contained within this advertisement. *Based on a 5.9% annual lease rate, 48-month term for Sonoma Ext. Cab R7B/S-10 Ext. Cab R7B. \$0.12/km charge over 80,000 km for 48 months. Option to purchase at lease end is \$12,479 (Sonoma Ext. Cab R7B/S-10 Ext. Cab R7B), plus applicable taxes. Other lease options available. †Excludes freight of \$850 (Sonoma Ext. Cab R7B/S-10 Ext. Cab R7B). Licence, insurance, registration, PPSA, administration fees and taxes not included. ‡Financing on approved GMAC credit only. Example: \$10,000 at 0% APR, the monthly payment is \$277.78 for 36 months. Cost of borrowing is \$0. Total obligation is \$10,000.00. Down payment and/or trade may be required. Monthly payment and cost of borrowing will vary depending on amount borrowed and down payment/trade. *†‡Offers apply as indicated to new or demonstrator 2002 model Sonoma Ext. Cab R7B/S-10 Ext. Cab R7B equipped as described. Offers apply to qualified retail customers in the Ontario Chevrolet Oldsmobile and Pontiac Buick GMC Dealer Marketing Association areas only (including Outaouais and excluding Northwestern Ontario). Dealer order (on Lease offers only) or trade may be required. Limited time offer that may not be combined with other offers. Dealers are free to set individual prices. See your Dealer(s) for conditions and details.

