

Connecting Halton project is underway thanks to funding grant from provincial government

Imagine a community where an electronic service can help citizens identify the location of community services such as after-hour medical clinics, social service agencies and government offices.

Then imagine an electronic application to promote the sale of local produce to restaurants and grocery stores in the Halton community.

All this will be possible through the Connecting Halton project.

"The money from the Province kicks this project into high gear," said Regional Chairman Joyce Savoline, adding the project recently received \$50,000 in funding from the

Ministry of Energy Science and Technology.

The money is to be used to develop a business plan under the Connect Ontario program. This funding is in addition to \$50,000 in community funding that was secured for the project in June 2000.

The Connecting Halton Steering Committee, led by Halton Region, is composed of 23 representatives from a wide variety of sectors such as education, health, police, municipal and regional governments, utilities, libraries, business, environment and agriculture.

Over the next few months, each of the steering committee representatives will hold work-

shops with groups and individuals to generate ideas, comments and opinions on how information technology can be used on a community-wide basis to improve the quality of life in Halton. The business plan is expected to take up to one year to complete.

"Connecting Halton directly supports our strategic objective to provide accessible and resourceful government to the people of Halton," Ms Savoline said. "Together, working with our partners, we will be able to improve upon how we deliver our programs and services and meet the growing demand for electronic and other new service delivery channels."

Organizations participating in the Connecting Halton project include the Towns of Milton, Oakville, Halton Hills and Burlington, the Milton, Oakville, Halton Hills and Burlington public libraries, Halton District School Board, Halton Catholic District School Board, Halton Healthcare Services, Halton Regional Police Service, Halton Social Planning Council and Volunteer Centre, Halton Agricultural Advisory Committee, Human Resource Development Canada, Oakville Hydro, Conservation Halton, Bell Canada and the Business Information Technology Network.

Walk in memory of a loved one hosted by group

Bereaved Families of Ontario putting on Walk to Remember

On May 26, Halton and Peel residents will be able to remember loved ones who have passed on during the Walk to Remember, organized by Bereaved Families of Ontario.

The walk will begin at Centennial Square in Oakville, located at Navy Street and Lakeshore Road, at 10 a.m. The walk will last until 1 p.m.

Some people will walk in the name of a friend or a co-worker. Others will be walking in memory of a spouse, child, parent or sibling.

"Extended families and friends who haven't been through a similar loss usually don't have the understanding or skills that are most needed by those who are bereaved," explained Wendy Dean, executive director of Bereaved Families of Ontario. "Frequently people are too worried about upsetting the child or parent to allow them to express their grief."

According to Bereaved Families of Ontario, traumatic life events can lead to further complications and dangers, hurt individual family members and damage the family as a whole.

Walkers will have the opportunity to make a donation or collect pledges for Bereaved Families of Ontario on walk day.

Pledge forms are available at www.bereavedfamilies.org or by calling (905) 813-0363.

Be mindful of the environment when opening your pool

As summer approaches, thoughts turn toward afternoons spent relaxing by the pool.

But before you begin the process of opening your pool this year, Conservation Halton wants to remind the public to keep a few things in mind to avoid damaging the environment.

The water accumulated as a result of rainfall and melting snow can be dumped on the lawn or garden.

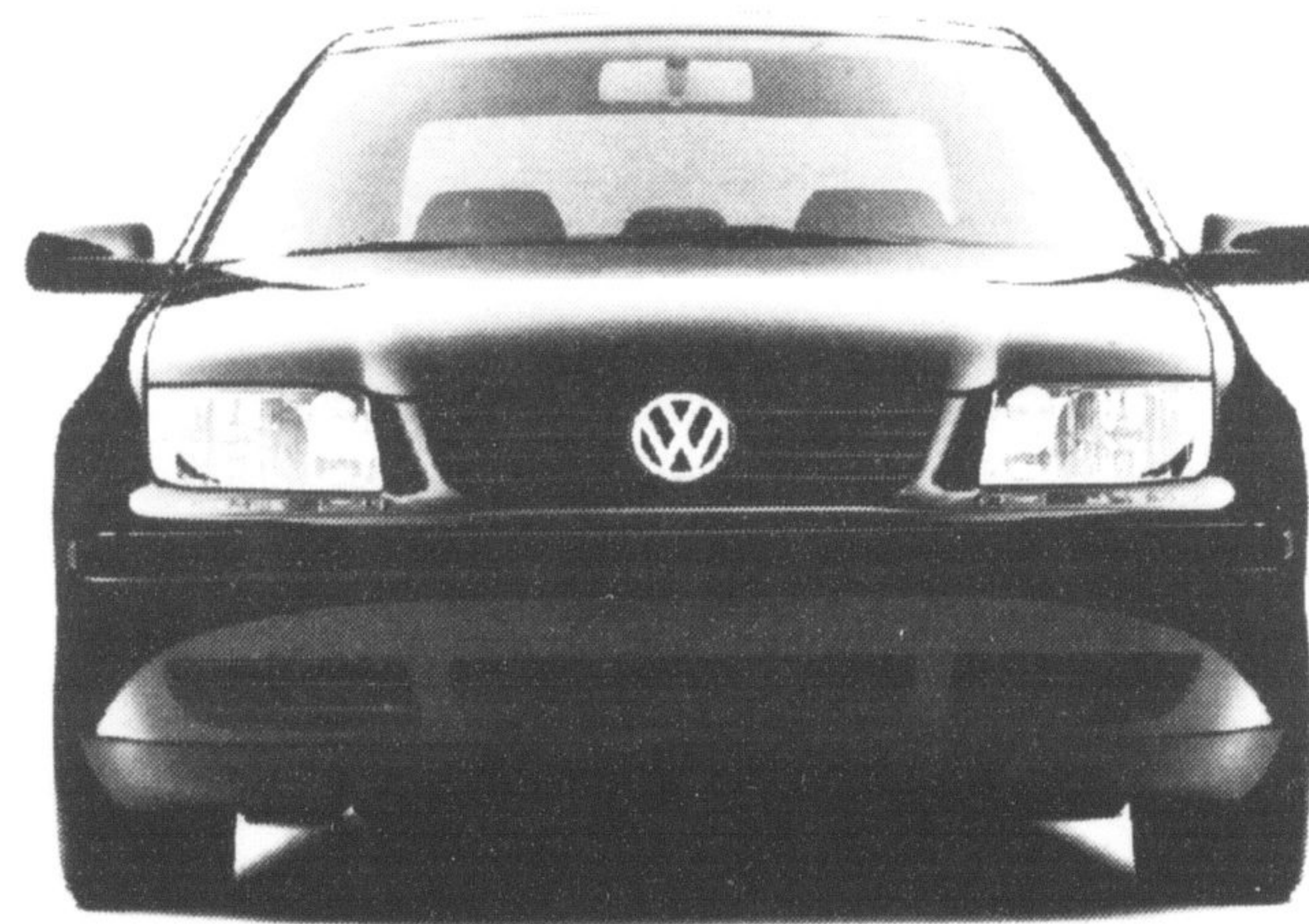
If draining the water into a ravine or forest, do so at a pressure low enough that soil erosion and slope failure don't occur.

When backwashing, avoid disposing of pool water which contains chemicals into the natural environment.

Most urban-area pools are designed so the filter automatically drains backwashed water into the storm sewer system.

The backwash water contains sediments that can cause sediment pollution damage to surface water if drained directly into it.

If the water is spread across the lawn, some water will be lost through infiltration, some sediments will be filtered and most remaining pool chemicals will evaporate into the air, causing no damage to the environment.



What will you do with the money you save?

TDI Manual L/100 km

5.6 4.4

City Highway

TDI Automatic L/100 km

6.9 4.9

City Highway

Annual fuel savings for Jetta TDI Automatic compared to:

Daily Commute:	150 km	200 km	250 km
Chrysler Sebring (2.4L Automatic)	\$762.24	\$1,016.32	\$1,270.40
Honda Accord (2.3L Automatic)	\$683.97	\$911.96	\$1,139.95
Mazda Protégé (1.6L Automatic)	\$605.70	\$807.60	\$1,009.50
Nissan Altima (2.5L Automatic)	\$757.11	\$1,009.48	\$1,261.85
Oldsmobile Alero (2.2L Automatic)	\$636.50	\$848.66	\$1,060.83
Subaru Impreza AWD (2.0L Automatic)	\$1,022.71	\$1,363.61	\$1,704.51
Toyota Camry (2.4L Automatic)	\$636.50	\$848.66	\$1,060.83

Along with improvements in diesel science that include quieter engines and more power, Volkswagen's advanced TDI engine can cover more than 1,000 kilometres on a tank of fuel. With special finance and lease rates available through the end of May, you can save today, while your new Jetta TDI will ensure that you save on fuel for years to come.

Georgetown Volkswagen

Drivers wanted.



199 Guelph Street - 905.877.5285

Mon - Thurs 9:00 am - 8:30 pm; Fri 9:00 am - 6:00 pm; Sat 9:00 am - 5:30 pm

Informed consumers always read the fine print. Fuel economy ratings for the Jetta TDI, Chrysler Sebring, Honda Accord, Mazda Protégé, Nissan Altima, Oldsmobile Alero, Subaru Impreza AWD, and Toyota Camry from the EnerGuide 2002 Fuel Consumption Guide produced by Natural Resources Canada. Fuel savings based on fuel required to travel the Daily Commute distance 260 times per year, assuming the commute is 15% city driving and 85% highway driving. Cost of fuel based on April 30, 2002, average gasoline price of \$0.658 per litre and average diesel price of \$0.620 per litre as published by MI Ervin & Associates Inc. for the Toronto area. Actual mileage may vary.