

Big turnout expected for Showcase Milton

The Milton Chamber of Commerce is expecting the upcoming Showcase Milton to be another success.

The three-day show, 'More than a Home and Leisure Show', will be held May 24 to 26 at Milton Memorial Arena on Thompson Road.

Visitors to Showcase Milton can take advantage of free daycare Saturday and Sunday (sponsored by Safe and Sound Children's Centres), prizes, hot air balloon rides and an old fashioned family country chicken barbecue.

"Showcase is going to be even better than last year," said Sandy Martin, executive director the Milton Chamber of Commerce.

"Many of the exhibitors are holding prize draws at their booths and we've got several grand prizes including a week long all inclusive trip to the Dominican Republic, a landscaping package and a fitness package."

The barbecue chicken dinner will be held Saturday night from 5 to 7 p.m. The dinner will include a salad and roll at a cost of \$6.

Tickets for the dinner are available at the chamber office, 251 Main St., and must be purchased in advance.

"Our corporate sponsors have helped to make this show and all the activities possible," said Dawn Case, chairman of the sponsorship com-

mittee at the chamber. "Support from The Canadian Champion, the Milton Mall, Travel Choice/American Express and Woodbine/Mohawk has allowed us to provide an opportunity for local residents to meet each other and local businesses."

Tethered rides on the eight-storey hot air balloon will take place Friday and Saturday for a \$2 donation. All proceeds will be donated to the Milton District Hospital Foundation.

For more information or to purchase tickets for the barbecue, call (905) 878-0581 or visit www.chamber.milton.on.ca.

MAY 6 - 12

ENTER MILTON MALL'S

"PAMPER MOM"

MOTHER'S DAY CONTEST

Two Special Moms will each receive a gift package to include:

- Dinner for four at

Wright's Corners Restaurant

- Appointment &/or Hair Care

Products from

Hair Dimensions OR Heady's

(winners choice)

- Assorted Products from

Body & Bath

(Total value approx. \$250 each)

BALLOTS IN STORES

NOW

Draw 10am Mon. May 13

Limit 5 ballots per entrant

MAY 11

SPRING FLOWER SHOW

Milton Horticultural Society.

ART SHOW & SALE

Fine Art Society Milton
"Wednesday Painters"



Mum's the Word

MILTON MALL

friendly & familiar

Escarpment Country™ Tourism Partner

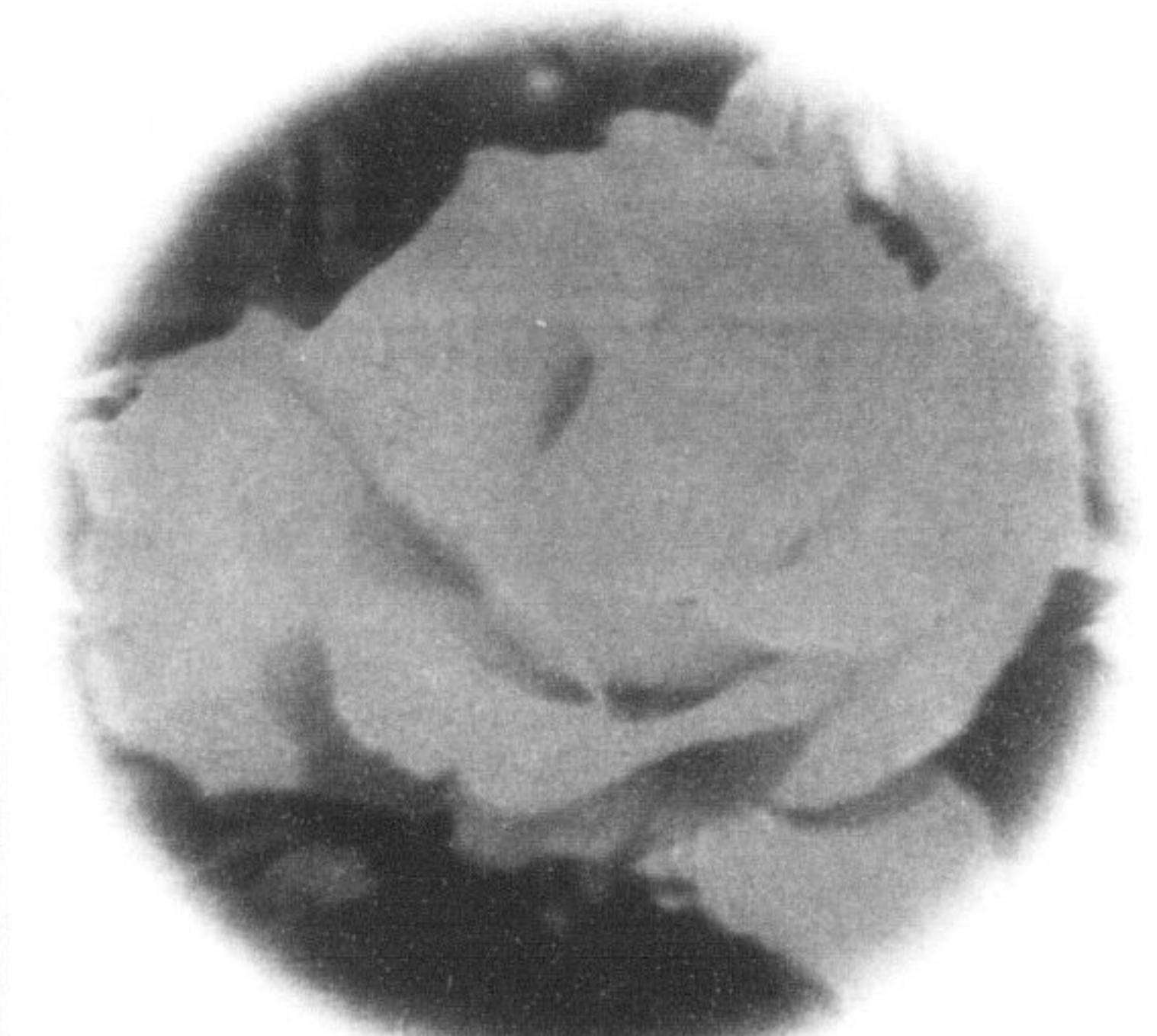
Shopping Hours: Mon. to Fri. 9:30 a.m. - 9:00 p.m. Saturday 9:30 a.m. - 6:00 p.m. Sunday Noon to 5:00 p.m. Corner of Main & Ontario 905-878-3900

Crawfords Country Gardens



**FRAGRANT
LILAC
SHRUBS**
6 Colourful
Varieties
30% off

**Mothers
Day
Favorites!**



ROSE BUSHES

32 Varieties,
Hybrid Teas, Floribundas,
Grandiflora, Climbers,
Explorers, Flower Carpets,
and Parkland Roses.

from **\$12.99** ea.

Sale ends Sun, May 12

Crawfords Country Gardens



1/2 mile east of Hwy 25
on Campbellville Road

905-878-0223

HOURS:

Mon-Sat: 9-6, Sun: 10-5