

## Glen Eden slopes still open

Slopes are still open at Glen Eden Ski and Snowboard Centre.

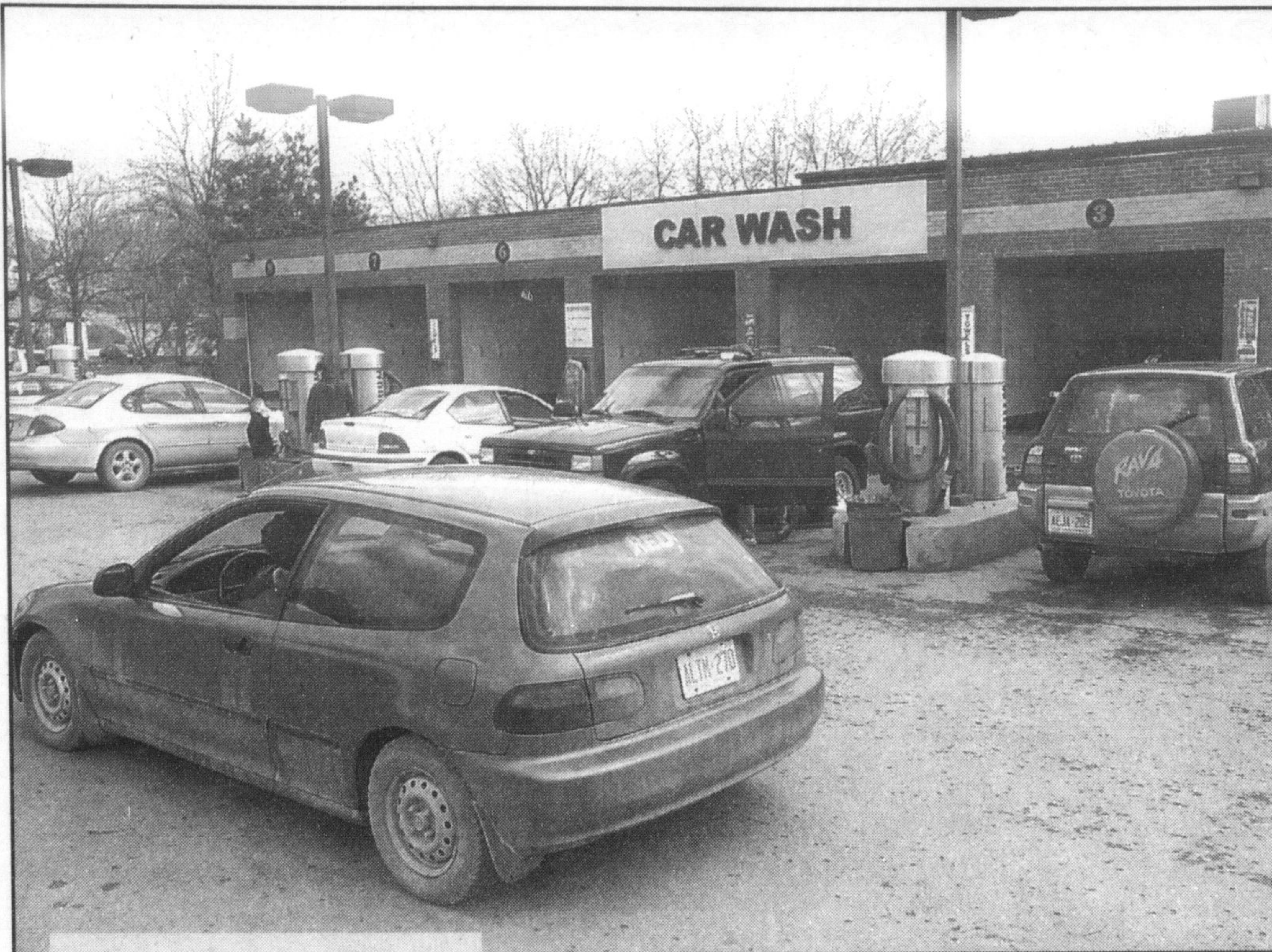
And weather permitting, the slopes will stay open until March 25.

Skiing and snowboarding will again take to the mountain over Easter weekend (March 29 to April 1) before closing for the season.

While day skiing carries on until the season ends, tomorrow is the last opportunity for night skiing (5 to 10 p.m.), and the conservation area is marking the occasion with a special deal. For one night only, lift tickets and meal deals will cost \$5.

### CORRECTION NOTICE

Please be advised that the Chevrolet Oldsmobile "Intrigue" ad that has appeared in this publication contained an incorrect feature. The standard tires available on this vehicle are S-Rated Tires, not H-Rated Tires as advertised. We apologize for any inconvenience this may have caused.



## Spring clean

The mild temperatures have brought out many motorists to local car washes to wash away the winter grime.

Photo by  
GRAHAM PAINE

## ANTIQUA AUCTION SALE

MONDAY, MARCH 18 AT 10:30 AM

AT THE AGRICULTURAL HALL,  
MILTON FAIRGROUNDS  
ROBERT ST. MILTON

Quality antiques and contemporary furniture,  
glass, china, lighting, linen, costume jewelry,  
home decoratives and much more.

TERMS: CASH, CHEQUE W/ 2 FORMS OF I.D. No Reserves, No Buyers Premium

FOR MORE INFORMATION CONTACT:  
JON MEDLEY - AUCTIONEER (905) 878-2647

**GEORGETOWN CINEMAS**  
235 GUELPH STREET 873-1999

1	<b>ICE AGE</b>	F
Daily 6:45 p.m. & 8:30 p.m. Friday, Saturday & Sunday 2:00 p.m.		
2	<b>TIME MACHINE</b>	AA
Daily 7:00 & 9:00 p.m. Fri., Sat. & Sun. 2:00 p.m. (Frightening Scenes)		
3	<b>RETURN TO NEVERLAND</b>	F
Friday, Saturday & Sunday 2:00 p.m.		
3	<b>BEAUTIFUL MIND</b>	PG
Daily 6:45 & 9:15 p.m. (Mature Theme)		

GIFT CERTIFICATES AVAILABLE  
Lotto Centre - Georgetown Market Centre  
Theatre Parking Available at Rear

## BANKRUPTCY!

GET A FRESH START. Get SOLUTIONS now for:

Credit Card Problems	Loss of Job or Loved One	Repossessions
Major Cash Flow Problems	Wage Garnishments	Evictions
Persistent Bill Collectors	Judgements, Law Suits	Student Loan
Delinquent Taxes	Foreclosures	Divorce Related Financial Problems

**PADDON + YORKE INC.**  
FINANCIAL ADVISORY SERVICES  
TRUSTEE IN BANKRUPTCY

Bankruptcy can be avoided. Call us! No charge for initial consultation!

**875-0811**

225 Main Street East (Main & Martin St.) Milton

A better solution!

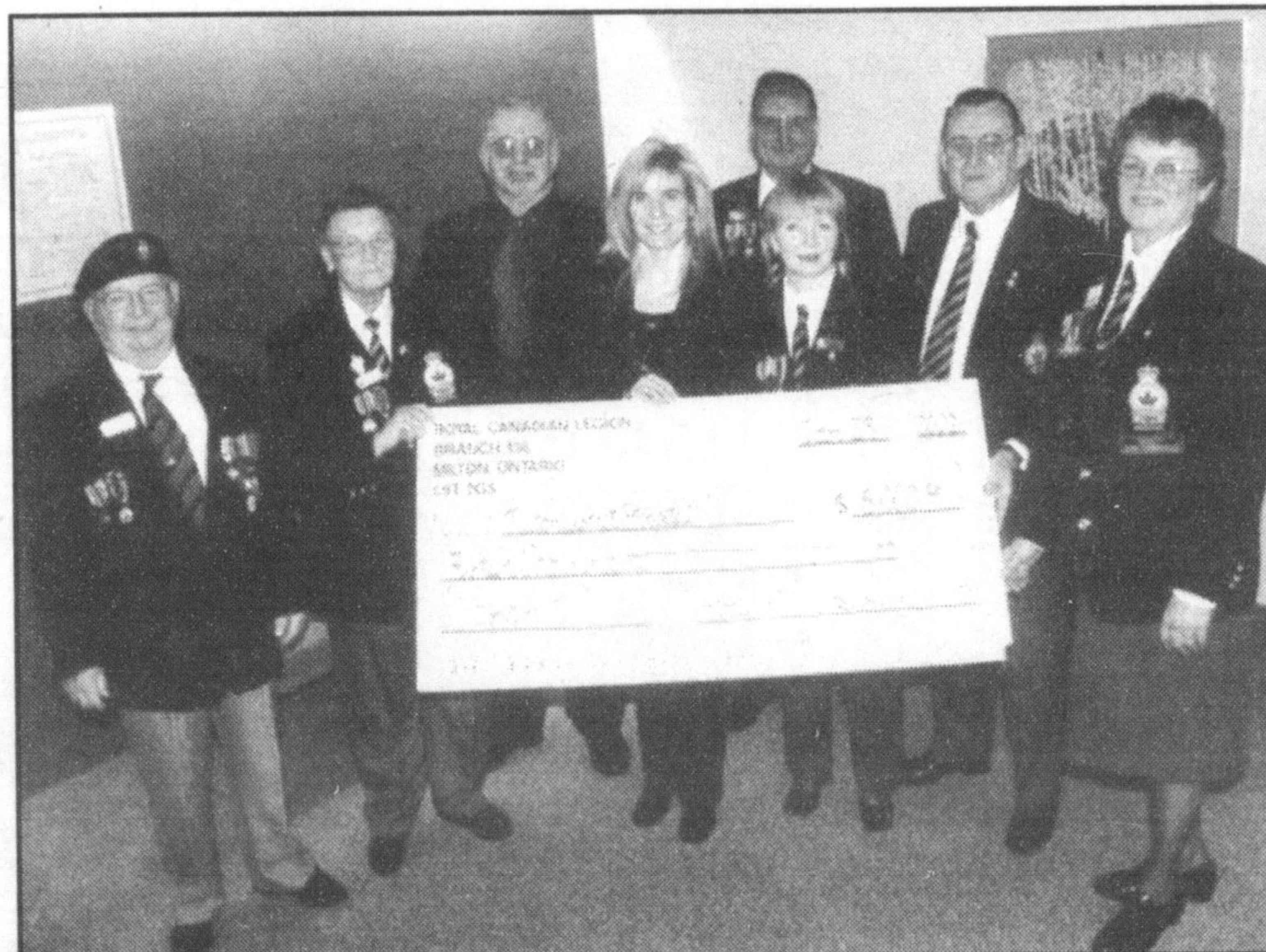
# Mammography Campaign receives support from Royal Canadian Legion Branch 136



The Royal Canadian Legion Branch 136 has served the community of Milton over the years, supporting a variety of projects. Since 1990 the Branch has donated more than \$24,000 to the Milton District Hospital including a recent donation of \$15,000 for the mammography unit. In addition, the Royal Canadian Legion Ontario Provincial Command Branches and Ladies' Auxiliaries Charitable Foundation donated \$9,139.28 towards the purchase of two holter monitors for MDH. The Legion has supported MDH over the years through the buy a bulb Christmas Campaign, Hike for Health sponsorships, the financing of a canopy for the medical/surgical patio and golf tournament sponsorships. We'd like to say thanks to the Legion for their continued support.

The Legion supports our Veterans, our youth, team sports, community events such as the Santa Claus parade and the Fishing Derby and charitable causes such as the Terry Fox Run.

Pictured here are Joe Lilko, Jean Hasselfeldt, Tom Logie, MDHF Board Chair, Kim Mason, Mammography Unit Campaign Chair, George Bickers, Laurie MacNab, Vern Larouche, President Sharon McKeown.



Early detection remains a crucial factor in detecting breast cancer. High quality mammograms, x-rays of the breast, are the cornerstone for early breast cancer detection and essential in a comprehensive women's health program.

The Milton District Hospital Foundation has embarked on a campaign to raise \$220,000 to purchase a new mammography machine to replace an existing older unit. With the new state-of-the-art equipment, the Hospital will be able to provide clearer more accurate mammography results and take advantage of some of the newer breast cancer screening technologies.

"The new mammography unit represents the newest model available and will provide Milton District Hospital with the ability to maintain and expand its diagnostic services," says Merla Johnstone, Manager, Diagnostic Imaging at MDH. "The new machine provides clearer, more detailed images and has reduced the incidence of patients needing to return for repeat tests for clarification. Tests are completed more efficiently resulting in an increase in the number of tests performed over time. The department currently performs 1,600 mammogram examinations a year. Together with ultrasound, special mammography studies, and biopsies, a new mammography unit will help physicians manage breast disease, everyday, right here in Milton."

The fundraising campaign wraps up on Friday, May 3, 2002 at the Foundation's Crystal Ball, the proceeds of which will also be directed towards the campaign. Tickets are selling out fast, call the Foundation today to reserve your seats.

**The MDH Foundation Crystal Ball - Friday, May 3, 2002,**  
Rattlesnake Golf & Country Club. For tickets, please call 905-876-7014