

# GORRUD'S AUTO

A family business for over 41 years

Over 300 Vehicles in stock

**Why Shop Anywhere Else?**

410 Steeles Avenue, Milton  
(Beside Milton Toyota)

**905-875-2277**

[www.gorrudsautogroup.com](http://www.gorrudsautogroup.com)

## RETIREMENT AND ESTATE SERVICES

INVESTMENT, DEBT AND INSURANCE SOLUTIONS FOR EVERY STAGE OF LIFE

**Walt Elliot**

Free, professional consultation in your home

**FARM MUTUAL FINANCIAL SERVICES INC.**

**(905) 876-3377**

elliotta@interhop.net  
7096 Tremaine Road  
RR 1 Milton L9T 2X5

**DONALDSON FINANCIAL GROUP**

**Helena Donaldson**  
CFP, CLU, CH.F.C.

**CARTIER PARTNERS FINANCIAL SERVICES**

101-310 Main St. E., Milton  
Tel: (905) 875-3366  
Fax: (905) 875-3574  
donaldsonh@cartierpartners.ca

24 YEARS OF SERVING HALTON



**Lorne D. Greenwood, B.A., LL.B.**  
BARRISTER & SOLICITOR

62 Main St. E. Milton,  
ON L9T 1N3

Tel: 905-693-0336  
Fax: 905-693-1304

Email: [lorne@stir.net](mailto:lorne@stir.net)



Res:



**RE/MAX**

Blue Springs Realty (Halton) Corp.  
**REALTOR®**  
Independently Owned and Operated

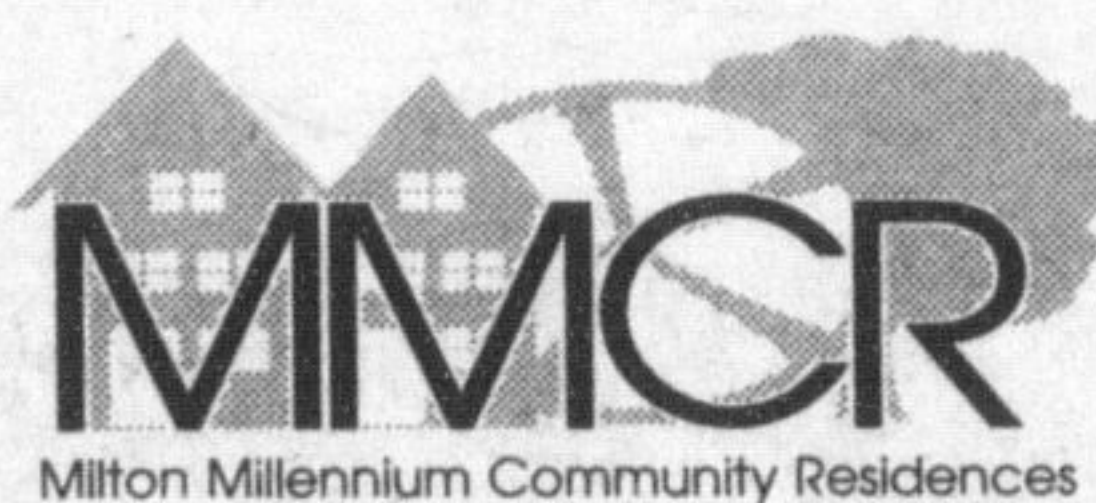
**BILL CURRIE\***  
Sales Representative

22 Ontario Street South  
Milton, Ontario L9T 2M6  
Fax: (905) 878-7029  
Bus: (905) 878-7777  
Email: [currie@worldchat.com](mailto:currie@worldchat.com)

**K&S Travel**

**905-876-1224**

550 Ontario St. South, Unit 8,  
Milton, Ontario L9T 5E4



Milton Millennium Community Residences

Milton Millennium Community Residences (MMCR) will start construction this spring of our community owned Martindale Gardens across from the Milton Mill Pond, with planned opening April 2003.



## ASSISTED LIVING RESIDENCE

• RENTAL ACCOMMODATION • MEALS • HOUSEKEEPING • 24 HOUR STAFFING

**Do you or a loved one need this kind of accommodation?**

**Milton Millennium Community Residences (MMCR)**

invites you

to get on the **waiting list** now in order to move into your **Martindale Gardens rental suite.**

### How?

- Providing a refundable deposit of \$500 with a Lease Reservation Agreement, and/or
  - Loaning MMCR \$50,000 or \$65,000 at **4% interest** with a Right to Occupy Reservation Agreement (RTO). You can move in at any time in the future. The initial deposit with the agreement is \$5,000 or \$6,000 depending on the suite type/size.
- Join MMCR and become a shared owner of Martindale Gardens. Membership is \$25/yr**

For more information, call the MMCR office at

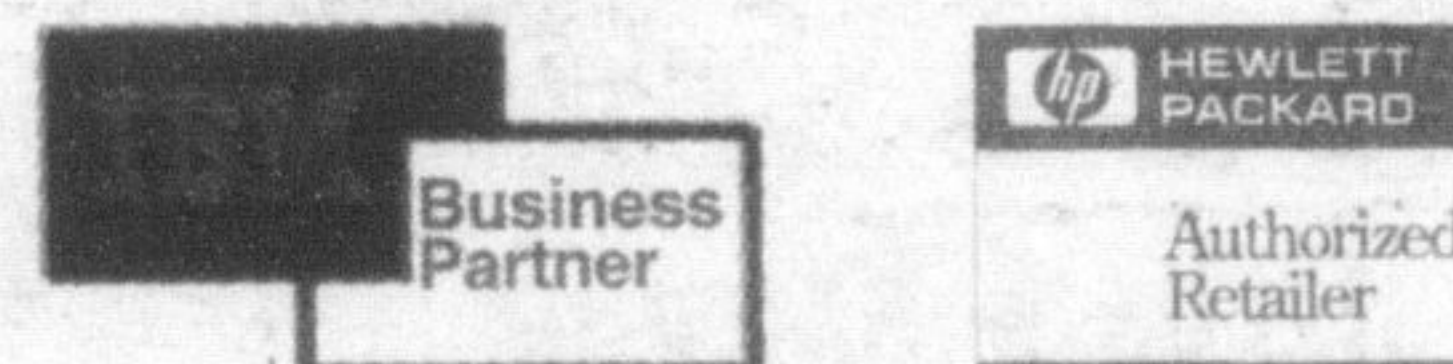
**905-693-8592**  
fax: 905-878-3692  
[mmcr@aztec-net.com](mailto:mmcr@aztec-net.com)

Please mail this coupon for more information  
MMCR, P.O.Box 361, Milton ON L9T 4Y9

Name: \_\_\_\_\_  
Address: \_\_\_\_\_  
\_\_\_\_\_  
\_\_\_\_\_

**the Cutting Edge**

Susan Kret  
Carriage Square



**ACER • TOSHIBA • SAMSUNG • PHILIPS**  
**• LEXMARK • MICROSOFT**

- Authorized Service Depot
- Full Training Contracts
- Software & Accessories
- Network Installing
- Sales & Service
- Corporate On Site Service

751 Main St. East, Suite 2, Milton  
Phone 878-4651 • Fax 876-1013 • 1-800-268-0034  
Monday - Friday 9-5:30 pm • Saturday 10-2 pm

MILTON OPTICAL

**Peggy Robitaille**  
OPTICIAN

Eye Examinations  
Arranged (next door)

Carriage Square  
15 Martin St.  
Milton, ON

**(905) 876-0556**  
Fax: (905) 876-1545

**Mercer Hildebrand & Zehr**

Certified General Accountants

**William J. Mercer,**  
FCGA, CFP

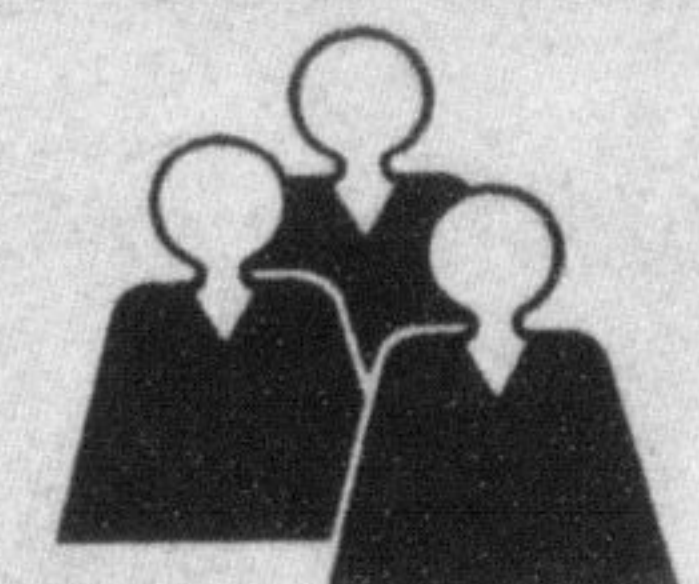
245 Commercial Street  
Milton, Ontario L9T 2J3  
**905-876-1144**

Fax: 905-876-4209  
Email: [mhz@globalserve.net](mailto:mhz@globalserve.net)

**ROBERT (PIE) LEE**  
**INSURANCE AGENCY**

Life - Disability - Annuities - RRIFs - LIFs  
RRSP's - Mutual Funds (M.S.I.L.) - RESP's

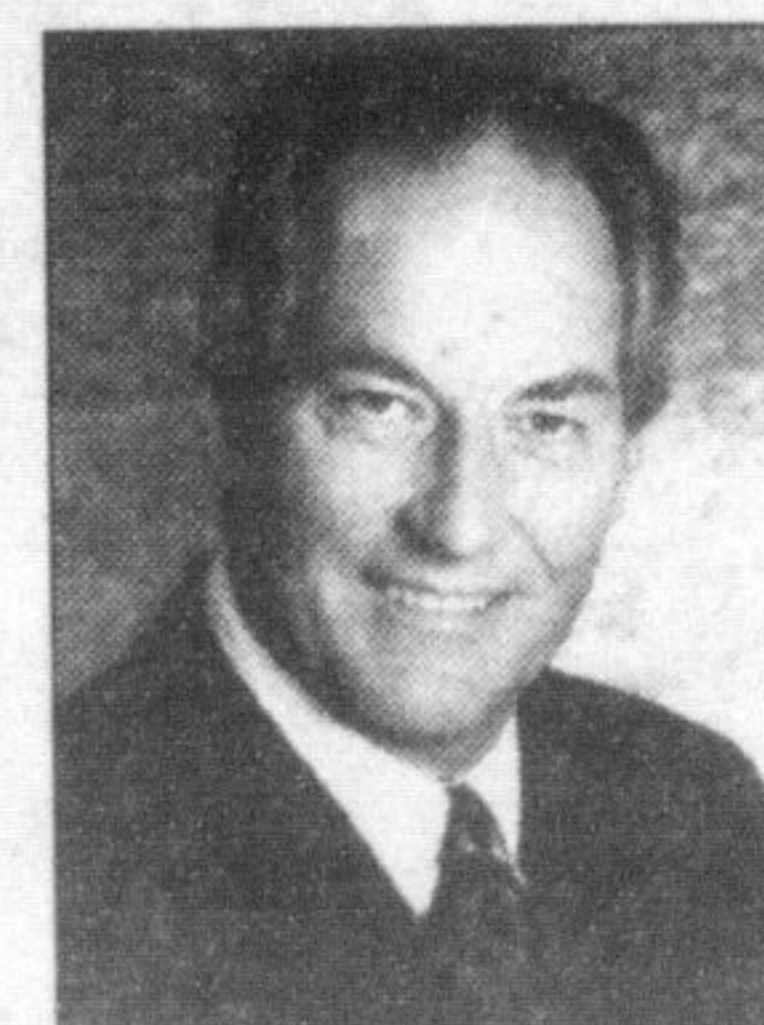
*Celebrating 27 years in Business*



Bob "Pie" Lee  
[bob@robertleeinsurance.com](mailto:bob@robertleeinsurance.com)

Kim Mitchell  
[kim@robertleeinsurance.com](mailto:kim@robertleeinsurance.com)

245 Commercial St.  
Milton ON L9T 2J3  
OFFICE 878-5786  
FAX: 878-3692



**TED CHUDLEIGH, M.P.P.**  
Halton

Constituency Office  
192 Main St. East Suite 100  
Milton, Ontario L9T 1N8

Tel: 905-878-1729  
Fax: 905-878-5144

Email: [ted\\_chudleigh@ontla.ola.org](mailto:ted_chudleigh@ontla.ola.org)