

School boards seek government rebates

Want Liberal MPs to take up their cause

By **TIM WHITNELL**

Special to The Champion

Halton's two school boards say the federal government owes them more than \$1.6 million combined, and they want local Liberal MPs to take up their cause.

The figure, say officials for both boards, represents the amount they believe they are entitled to under a claim for Goods and Services Tax reimbursement on student transportation costs.

Halton's public school board says it's seeking \$1.3 million in retroactive GST rebates while the region's Catholic board claims it's owed \$337,000.

Claims from both boards were submitted about three years ago, said Halton Catholic District Board Business Superintendent Joe Birett.

The Ontario Public School Boards' Association reports that 62 of 72 school boards in the province are spending more on transportation than they're receiving in ministry grants.

"Our 2000-01 deficit was \$700,000," said Karen Lacroix, manager of transportation for the Halton public board. "With the elimination of noon-hour busing, I don't think it will be as high as last year."

Halton Board Business Superintendent Carla Kisko estimated this year's deficit at \$400,000.

The history of the boards/government

dispute is that in 1996, 29 Quebec school boards challenged the federal government on GST for their transportation activities, claiming it's a commercial activity.

They believe they're entitled to a 100 per cent input tax credit rebate, not the 68 per cent boards have been receiving. Since then, some boards across Canada, including Halton's, also submitted claims which totaled \$40 million in Ontario alone by the end of November 2001. The rebate amount is estimated at \$70.5 million for participating schools boards in most provinces across the country.

Consultax Planification, the Montreal tax advisory firm handling the GST rebate claim for 111 boards, has former federal minister Marc Lalonde on the case. Consultax's fee is 29 per cent of the claim, said Halton board officials.

In October 2001, the Federal Court of Appeal overturned an earlier decision of the Tax Court of Canada in favour of the Quebec school boards.

However, the problem now, said the public board, is federal Finance Minister Paul Martin is proposing a retroactive amendment to the Excise Tax Act to January 1991, the date the GST went into effect.

If that happens, no school boards beyond the 29 in Quebec would be reimbursed for the percentage difference. The public board will send letters to area Liberal MPs - Paddy Torsney (Burlington),

Bonnie Brown (Oakville) and Julian Reed (Halton) - asking them not to support their government's retroactive amendment to the Excise Tax Act.

"I'm doing okay, but I wish I didn't have diabetes. The people at CDA make it easier."

Jody, aged 10

HELP SOMEONE YOU KNOW.

CALL 1-800-BANTING



CANADIAN DIABETES ASSOCIATION

ASSOCIATION CANADIENNE DU DIABÈTE

www.diabetes.ca



Milton Community Nursery School

123 Main Street East, Milton, Ontario L9T 1N4 905-878-7007

www.community-guide.com/mcns/mcnsframe.html

Thank you!

Milton Community Nursery School's annual Family Fun Day was held on Saturday, February 9, 2002. We had a terrific time! We would like to thank the following merchants and community leaders for their generous donations in support of our raffles. You helped to make our day a great success!

Bolle Eyewear
Halton Hills Jewellery
Body & Sole
The 5th Wheel
The Cutting Edge
Jo'Leen's
Total Skin & Body
Brancier Jeweller
La Toscana
The Donaldson Group
Clarke Golf Services

Elsley's Optical
Roger's Video
The Gospel Lighthouse
Luxottica Eyewear
Bergsma's Paint & Wallpaper
Zeller's
As We Grow
Delacourts
Zak's Pharmacy
Vida Spa

Nature's Fire
Kelsey's
A Country Mile
Unique Hair Design
Towne Dental Group
Milton Greenhouses
Shoppers Drug Mart
Harrop House Gallery
Cleo's
Milton Mall
Comic Express

Spokes n Slopes
AVE Entertainment
Charlie Fitzwhiskey's
Swiss Chalet
Chudleigh's
Bell' Occhio
H&M Optical
Tim Horton's
A Buck or Two
Scents & Sensations

Congratulations to all our winners! A special thank you goes out to the many families within the nursery school who donated additional raffle items. Our lunchroom was a big hit with all who attended this event and we wish to thank our generous sponsors for their donations:

Gino's Pizza
Twice the Deal Pizza
A&P
Weston's Bakery

Super Choice Country Markets
Domino's Pizza
Subway Mavis & Britannia
Loblaws

Maple Lodge Farms
Bruce Trail Eatery
Subway Milton
Quality Greens

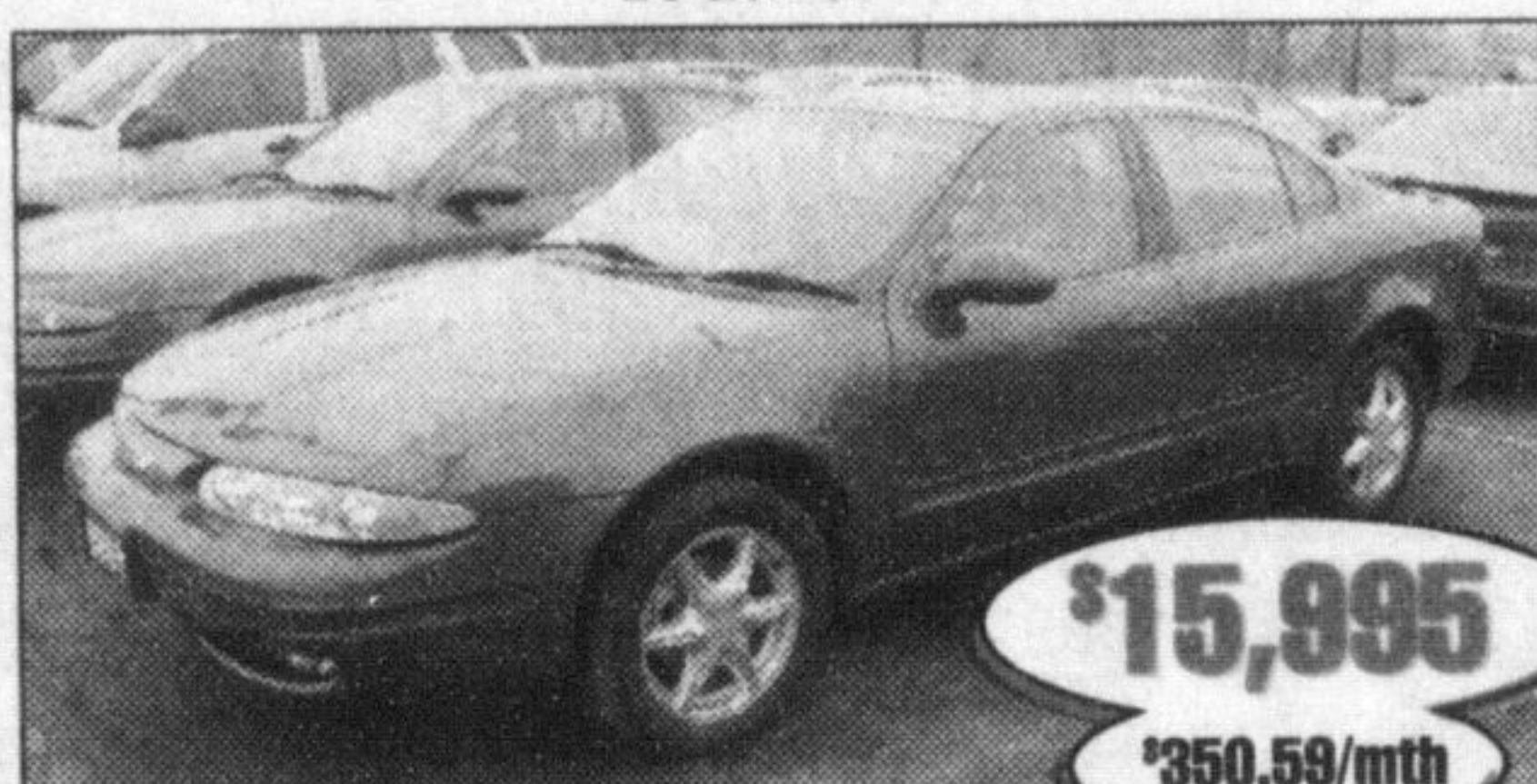
McDonald's
M&M Meats
Sobey's
Shoppers Drug Mart

Thank you also to our furry friends who came out to our character lunch to entertain the children and the many volunteers who worked so hard to make our day a great one!

NOW ACCEPTING REGISTRATIONS FOR FALL 2002

Pick-A-Price Pick-A-Payment Event

1999 ALERO GLS
Leather



\$15,995
\$350.59/mth

Sik # P2061

1999 CENTURY
Power moon roof



\$16,995
\$373.99/mth

Sik # P2058

1999 TRACKER
Loaded



\$15,995
\$350.62/mth

Sik # P2046

2001 CAVALIER LS
Loaded



\$14,795
\$324.05/mth

Sik # P2064

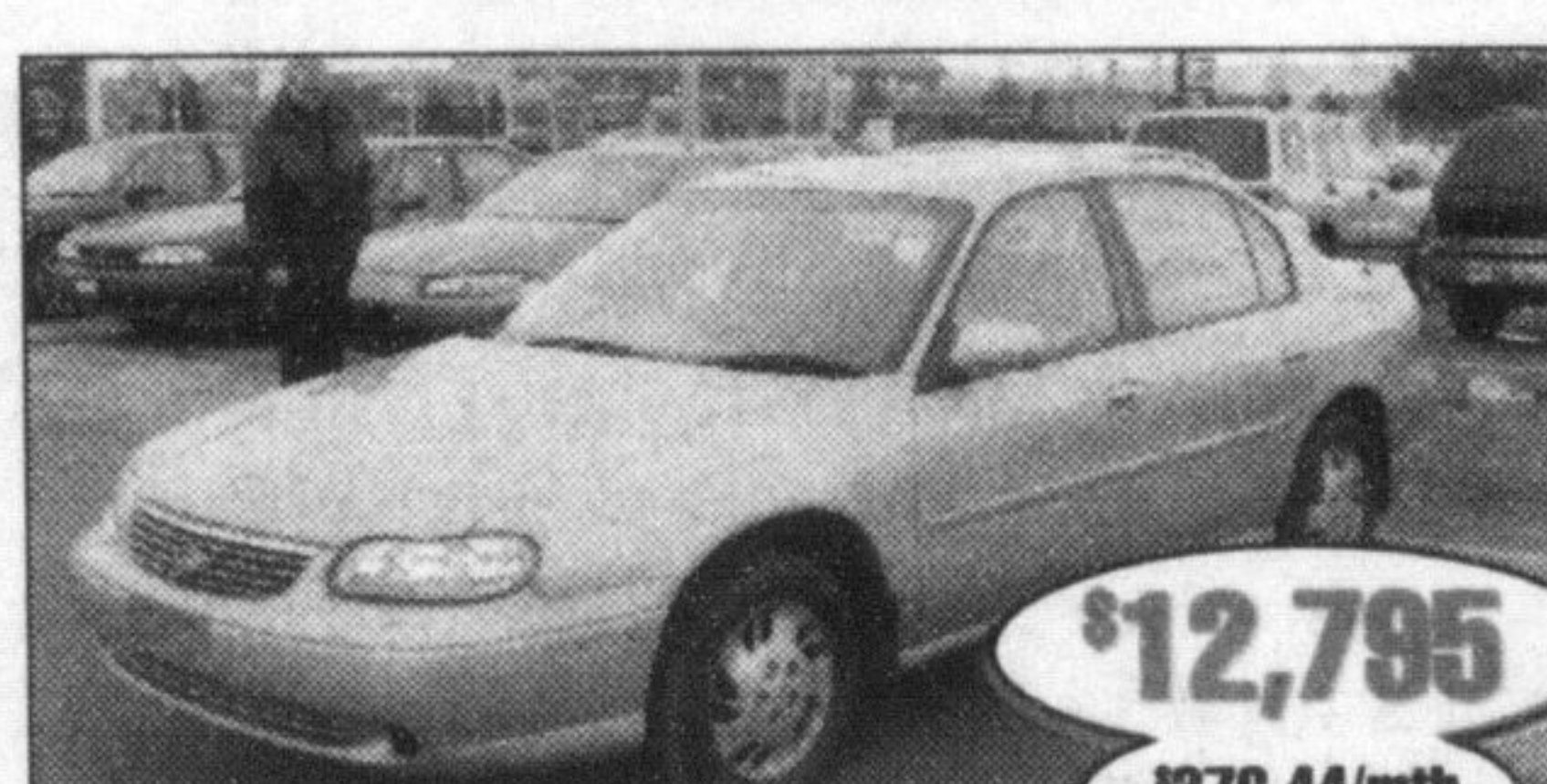
1999 TRANSPORT



\$15,995
\$356.72/mth

Sik # P2623A

1999 MALIBU



\$12,795
\$276.44/mth

Sik # P2060

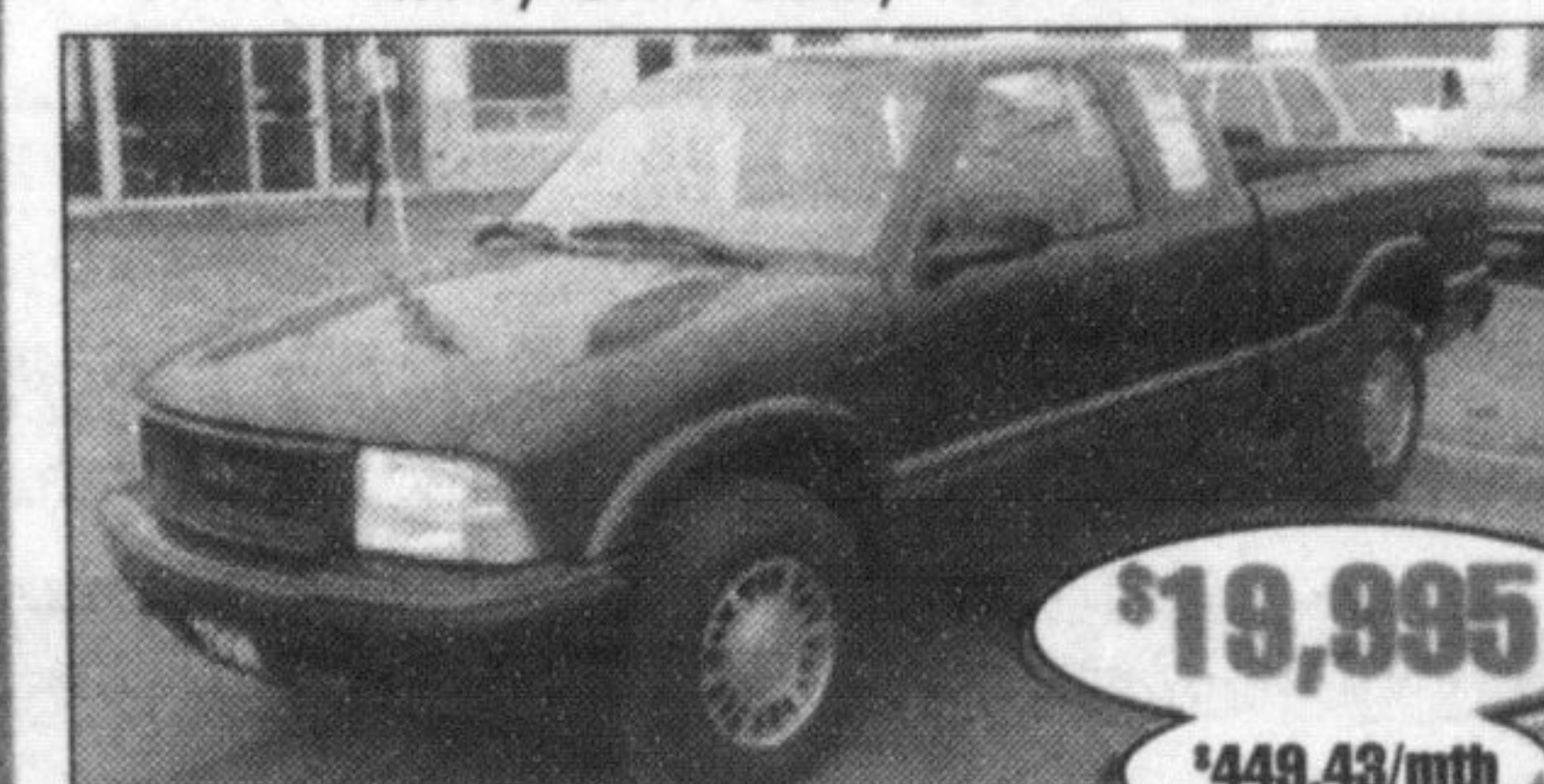
2000 SAFARI



\$17,995
\$396.95/mth

Sik # P2059

1998 SONOMA
4x4, ext. cab, low kms



\$19,995
\$449.43/mth

Sik # P2043

1998 CHEV EXT CAB
V8, auto, air



\$16,995
\$375.33/mth

Sik # P0215

1998 VENTURE
3.4 V6, auto, air



\$14,800
\$322.89/mth

Sik # P2017

1999 LUMINA LTZ

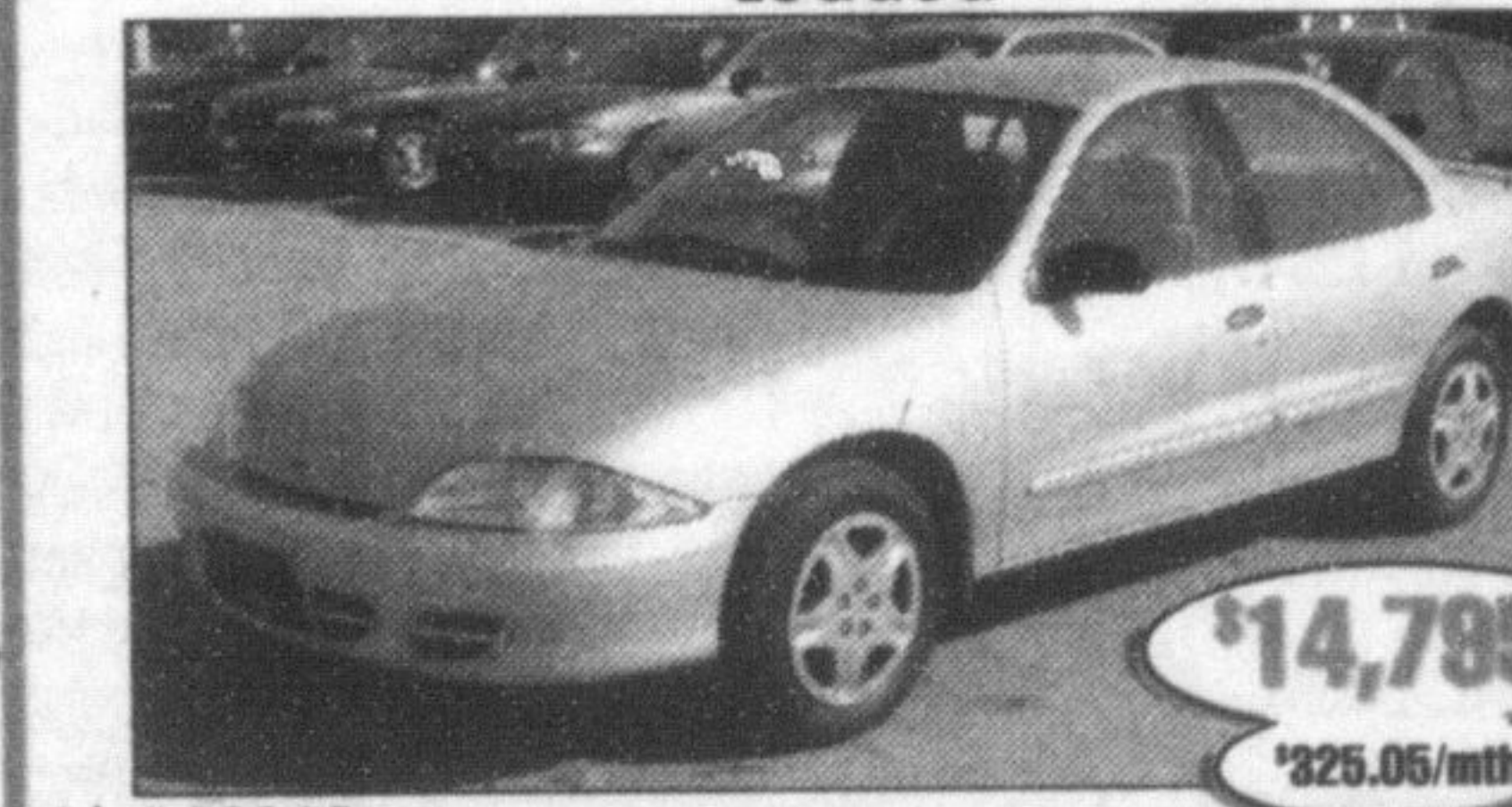
3.8 V6, auto, air, CD, PW, PL, tilt, cruise, P.seat, P. sunroof, leather seating, Like new



\$16,700
\$366.93/mth

Sik # P2050

2001 CAVALIER LS
Loaded



\$14,795
\$326.05/mth

Sik # P2065

All monthly payments based on 60 month term with \$1,000.00 down. Taxes included. Terms may vary and financing is subject to approval. APR 7.9% Interest rate subject to change. Example \$10,000 at 7.75% for 60 months - cost of borrowing is \$2093.

Most Vehicles have 6 month 10,000km GMPP P.T. Warranty

RICHARDSON CHEVROLET-OLDSMOBILE

878-2393

HWY. 25 S. AT DERRY RD., MILTON

Trades Welcome