

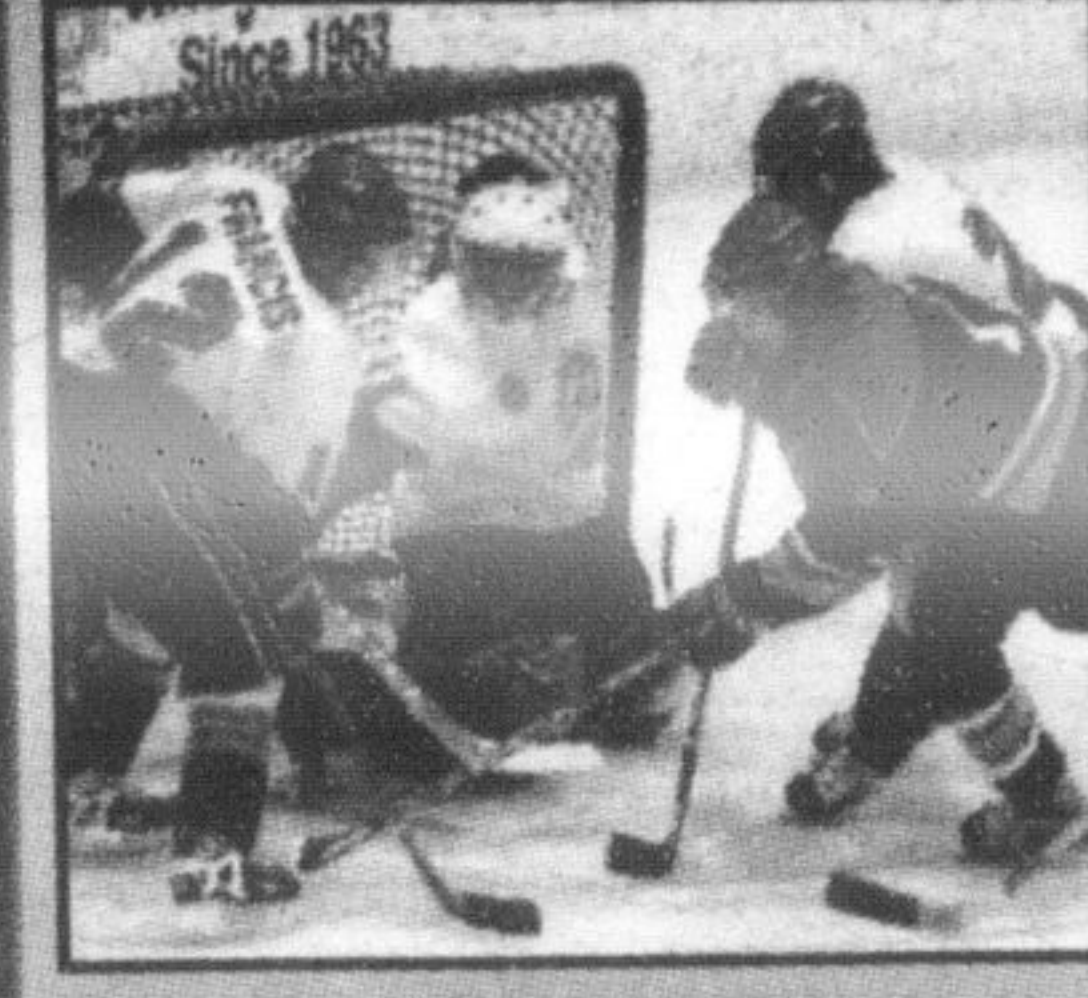
Restrictions for on-farm businesses may be reduced

See page 3



Lots of fun to be had in Aqua Tot class

See page 8



Merchants end regular season with tough loss

See page 19

McGuinty tries to rally troops at fundraiser

See page 4

# The Canadian Champion

Milton's Choice Since 1860

Protect Your Investment  
**Austen & Noble Insurance**  
• specializing in residential and rural properties  
• Auto  
• Business  
205 Main St. E.  
**878-7217**  
1-800-413-5701  
Serving Milton since 1956

A Metroland Community Newspaper

Vol. 142 No. 93

Tuesday, February 5, 2002

36 Pages

\$1.00 (GST included)



## Snow's back

Cassandra Karpiuk, 5, and mom Sandy (at left) find a snowy slope at Kinsmen Park a little more terrifying than they expected Saturday. Meanwhile, tubing along (inset) are friends, from left, Brittany Wiseman, 11, Nicole Thissen, 13, and Nikki Mandarin, 11. See another snow fun photo on page 5.

Photos by GRAHAM PAINE

## Still no application from CN a year after terminal announcement made

By RICHARD VIVIAN  
*The Champion*

One year after CN Rail announced its intentions to build an intermodal facility in south Milton, an application to the governing agency has yet to be filed.

CN is currently undertaking an environmental assessment on the proposed facility land — bordered by Tremaine Road, First Line,

Britannia Road and Lower Base Line — something which is required before an application can be filed with the Canadian Transportation Agency (CTA).

"The environmental assessment has not yet been finalized," said CN spokesperson Ian Thomson. "We're not rushing anything right now, but we'll see what happens in the spring."

While CN remains in a "holding pattern," the Residents Affected by

Intermodal Lines (RAIL) — a group of local citizens opposing the facility — are trying to keep the issue fresh in people's minds.

"This is going to have a tremendous impact on everyone in Halton, not just us (surrounding land owners)," said RAIL member Rita Post. "We want the whole community to be informed of what's going on."

RAIL's concerns centre around the affect of increased truck traffic (expected to be 500 to 1,000 trucks a

day), impacts on the environment/wildlife and health issues related to exhaust fumes from both trucks and trains.

In its attempt to rally support, RAIL has hosted nine information booths at Milton Mall — as well as one at a parents night at Our Lady of Victory School — distributed newsletters about the development and designed a Web site ([www.miltonrail.com](http://www.miltonrail.com)).

• see CN on page 12

### INSIDE

Comment .....	6
Business .....	16
Dateline .....	18
Classified .....	22-24

### TUESDAY INSERTS

- Business Depot\* • Real Estate\*
- Home Depot\* • Home & Rural\*
- Branciers Jewelry\* • Swiss Chalet\*
- Future Shop

\*Selected areas only



**STOP 'N' CASH**

'WHERE EVERYDAY IS PAYDAY'

CALL LOCAL 310-CASH

- ✓ INSTANT CASH ✓ NO CREDIT CHECK (Approval by phone)
- ✓ HASSLE FREE PAYDAY LOANS ✓ PENSIONS WELCOME



Richmond  
**AREA RUGS**

Starting at \$74

**tielemans interiors**

Special

**25% OFF**  
all sizes

Sale ends Feb 16th

340 Main Street Milton  
**878-3435**