

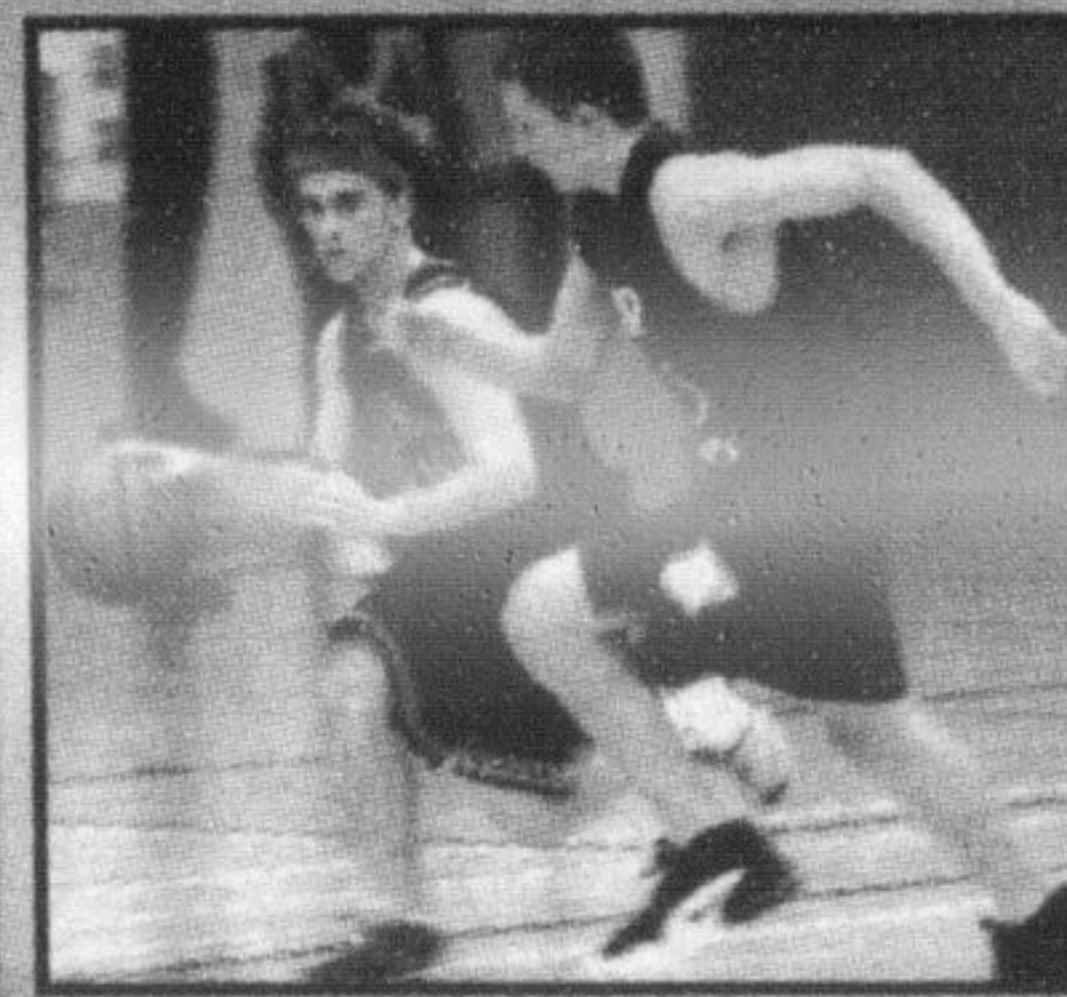
One lane to remain open during core construction

See page 3



Under-12 Outreach Project launched

See page 8



Bisop Reding senior cagers still winless

See page 17

Snowstorm causes chaos on Hwy. 401 westbound

See page 5

The Canadian Champion

Milton's Choice Since 1860

A Metroland Community Newspaper

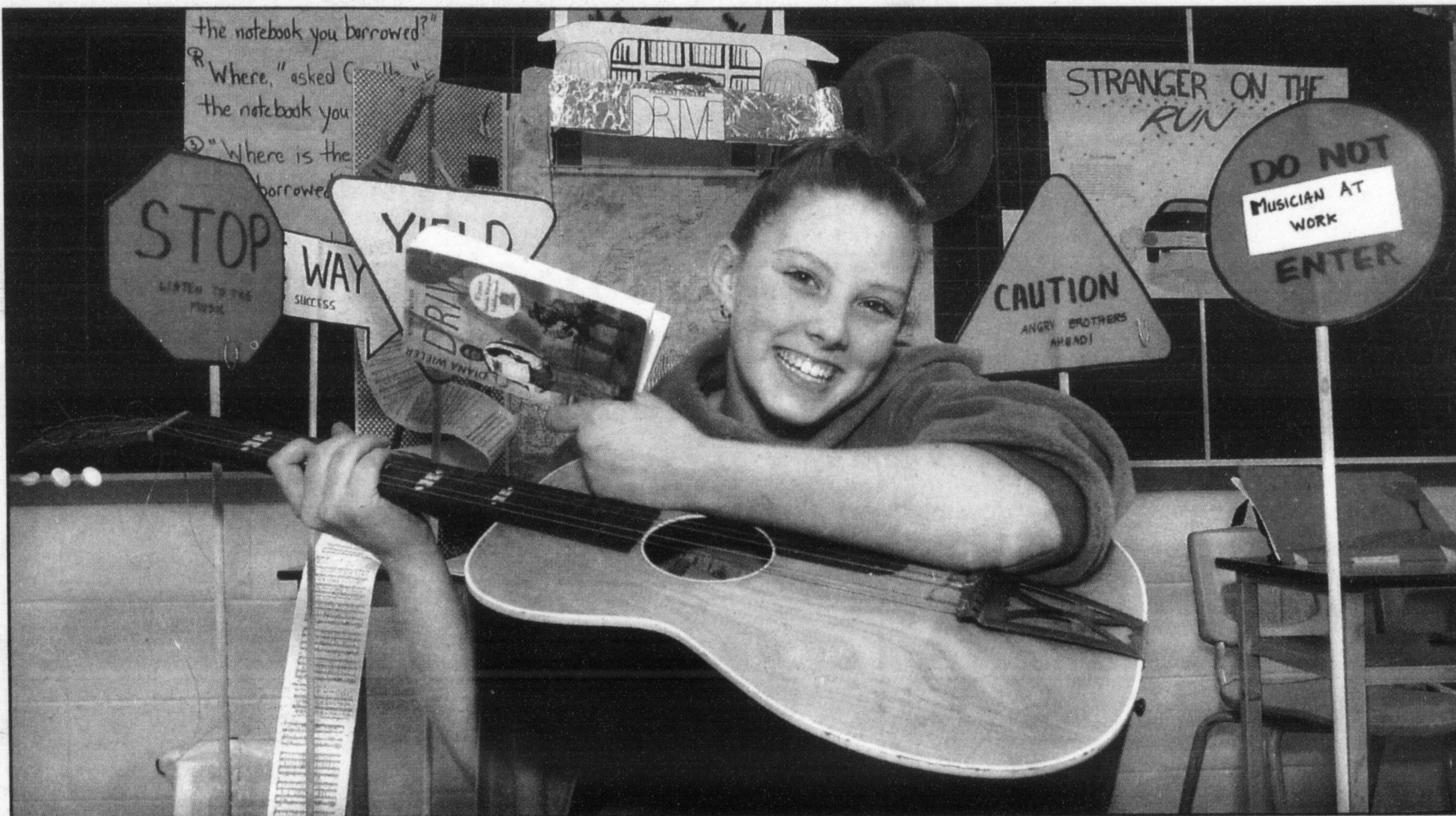
Vol. 142 No. 89

Tuesday, January 22, 2002

36 Pages

\$1.00 (GST included)

Protect Your Investment
Austen & Noble Insurance
• specializing in residential and rural properties
• Auto
• Business
205 Main St. E.
878-7217
1-800-413-5701
Serving Milton since 1956



Getting creative

Milton District High School held its annual creative writing showcase Thursday morning, featuring the works of some 100 grade 9 to 11 students. Here, grade 9 student Brittany Russell shows her display depicting her novel 'Drive', the story of a Manitoba road trip.

Photo by GRAHAM PAINE

United Way exceeds its fundraising goal, for a whopping \$330,000 total

By RICHARD VIVIAN
The Champion

When United Way of Milton volunteers set a \$310,000 fundraising goal for 2001, they knew it would be hard to meet — let alone exceed.

But through a variety of fundraisers and donations, the local charity organization collected a whopping \$330,000 to be used by 27 local social service agencies this year.

"Our success could not have been achieved without the dedicated involvement and contribu-

tion of our valued volunteers and staff," said Barbara Starr, president of the organization.

A major factor in the total was more than \$100,000 donated by Milton's industrial/commercial sector and its employees. In addition to long-time contributors like Meritor Suspension Systems Inc. and Roxul Inc., seven first-time contributors joined the fold.

"I was impressed with the generosity of our accounts — what an outstanding example of community caring," said Jim McQueen, chair of the United Way's Employers Division Committee, which handles employer donations.

Considering the United Way's fundraising track record in town, surpassing the fundraising goal was a welcome, but not completely unexpected surprise, said Anne Eadie, executive director.

"Last year we went over our goal and the year before that we just made it," she said. "It just depends on the year."

The top fundraising events of last year include the Mayor's Annual Golf Tournament (\$50,000), the Christmas House Tour (\$20,000) and the Dinner Auction (\$17,000).

A new fundraising goal for 2002 will be set by the United Way board of directors in June.

INSIDE

Comment 6
Dateline 7
Business 10
Healthy Living 14
Classified 20-22

BILL'S AUTO BODY SHOP

Working #1
Harder to stay
Specializing in Insurance Claims

Ries Boers Complete auto body and refinishing services

What are your Memories of Church?

Boring, dull, irrelevant to my life?
Counting ceiling tiles to pass the time?
Counting the minutes till you could leave?

We Agree and we're Listening.

Milton Bible Church
A Church for People Who Aren't Into Church

Meeting on Sundays @ 10:30 AM
at Milton District H.S. 876-3586

Wallcovering Sale

20-50% OFF Over 700 books to choose from

FINE PRINT: Almost half our selection is 1/2 price.
*Sale ends Feb. 5th/02.

IHDG
Interior Home Decor Group

tielemans interiors 340 Main Street Milton
878-3435