

Burlington Post editor is appointed editor-in-chief for Halton Division

Ian Oliver, vice-president of Metroland Printing, Publishing and Distributing Ltd., and publisher of the company's Halton Division community newspapers, has appointed Jill Davis as editor-in-chief of the Halton Division newspapers.

Ms Davis, who has been Editor-in-Chief of the Burlington Post for the past nine years, now will also be responsible for the editorial departments of The Canadian Champion, Oakville Beaver and Flamborough Post.

"I'm really looking forward to this new and challenging opportunity," said Ms Davis, who will have offices at both The Beaver and Burlington Post.

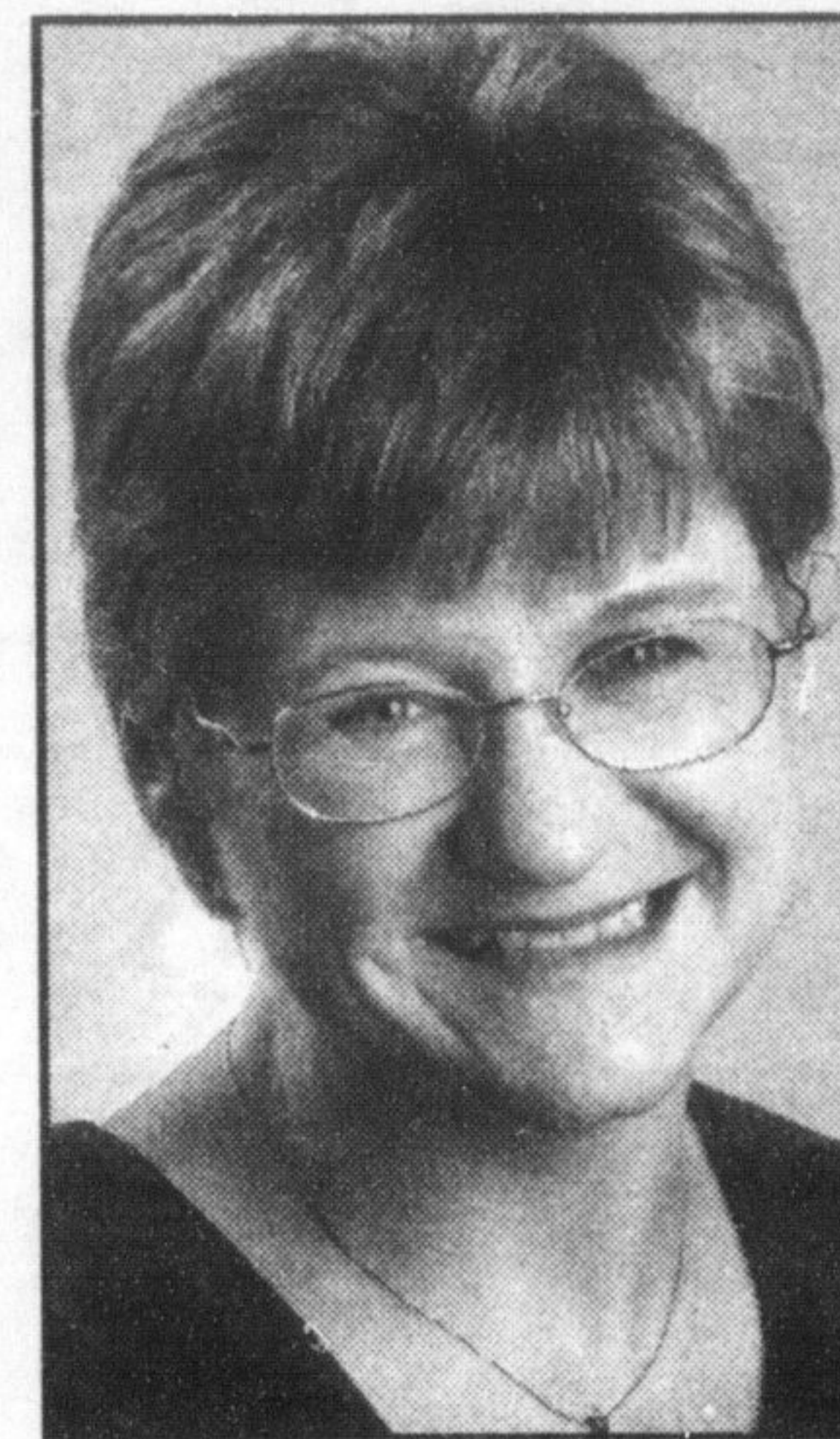
"I grew up in Burlington and Oakville and have lived in Halton all my life, and, therefore, feel very passionate towards the communities. I strongly believe our newspapers are the voice of Halton and I will ensure they continue to provide the excel-

lent coverage our readers and advertisers have come to expect."

Ms Davis, 41, is a graduate of the journalism program at Sheridan College in Oakville, and prior to joining the Burlington Post held the position of editor at the Brampton Guardian, a sister publication.

"Jill's appointment provides a wonderful

opportunity for her and our editorial departments to provide more informative and entertaining newspapers to the residents of Milton," said Mr. Oliver.



Jill Davis

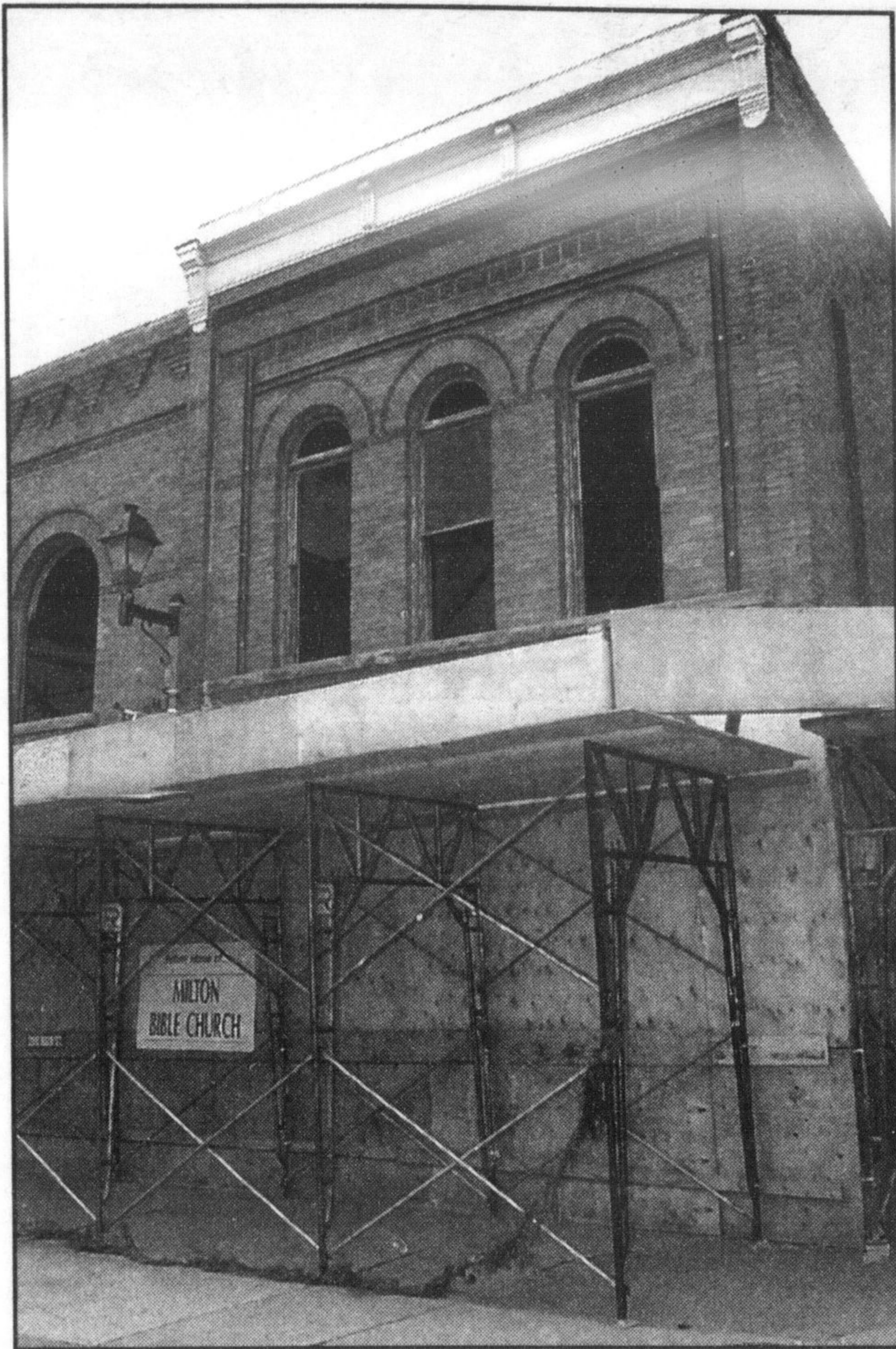
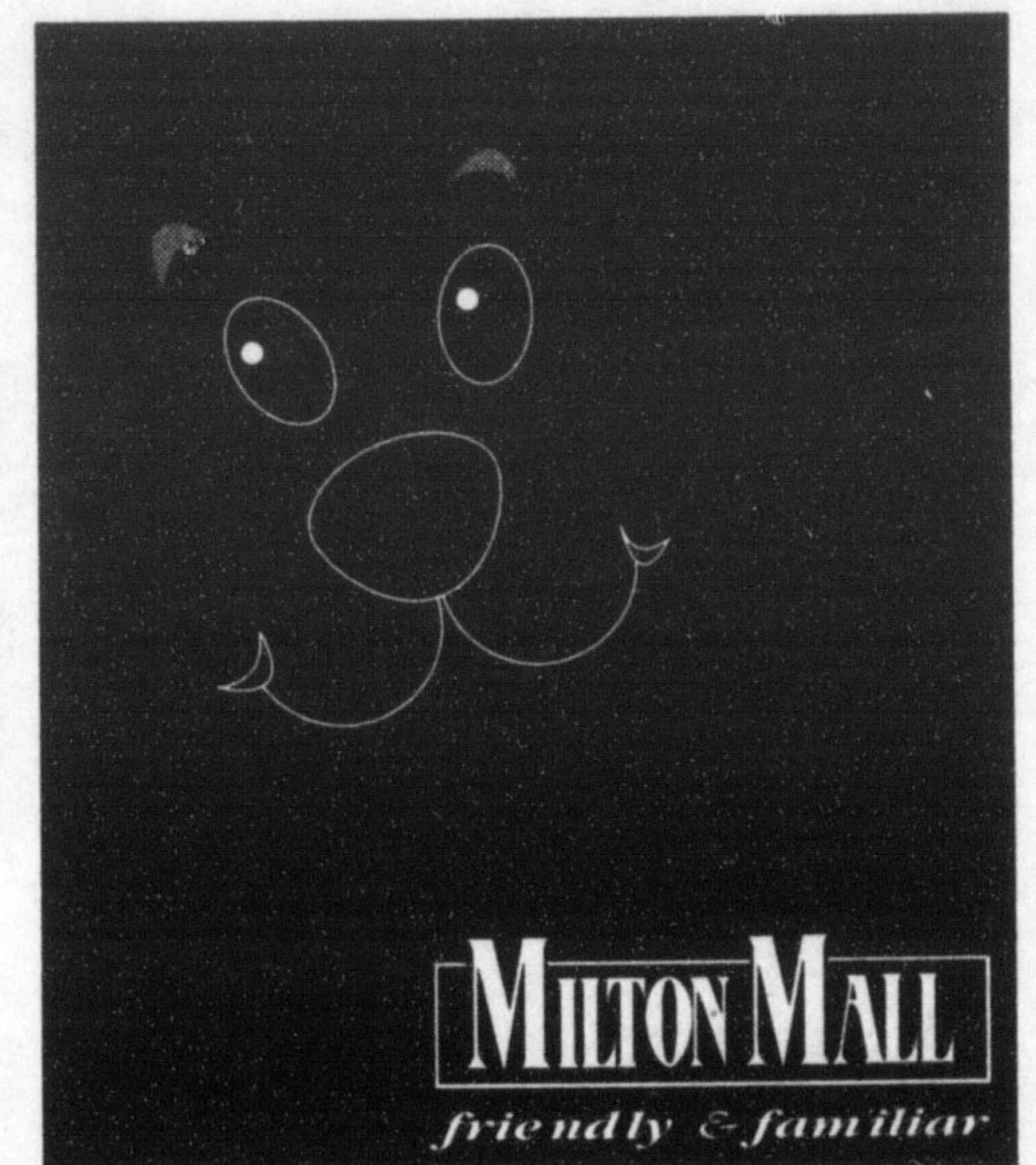


Photo by GRAHAM PAINE

Construction of the Milton Bible Church is at a halt while builders wait for approval from Conservation Halton. It turns out the building is in the flood plain.

Bible church construction delayed due to process glitch

By RICHARD VIVIAN
The Champion

A process glitch is causing a delay in construction of the new Milton Bible Church on Main Street.

Renovations to the building — which sits gutted — were halted about six weeks ago when the church was notified that Conservation Halton (CH) never signed off on the project.

"Normally what happens is we would be notified early in the process (by Town staff) and we'd ensure everything was in place that we wanted in place," said Bob Edmondson, director of watershed management services for CH. "Unfortunately in this case, that didn't happen."

"The problem is that the church is in an area that's susceptible to flooding. We don't necessarily see it as a major issue with what they have. We just want to make sure that what they have done is in compliance with flood plain policy."

Building in flood plain

Since the location is within the flood plain, policy states the building must be able to withstand severe flooding.

According to the Town's Director of Planning and Development Mel Iovio, the conservation authority wasn't originally notified of the building permit because the building was thought to be outside the flood plain. It was later determined that wasn't the case.

While the church waits for permission to continue the \$1 million renovations, extra time is being given to consideration of cost-cutting measures.

"We decided that while we were stopped work, we'd see if we could do things cheaper — have our engineers look it a second time," Pastor Jim DeMarsh told The Champion. "We thought we would use this time out to get a good look at the building."

It's too early to say if any changes will be made, continued Pastor DeMarsh. Church representatives will meet with engineers in the next couple weeks.

"We have to see what they (engineers) have to say. I'm not sure if we'll push it (opening) back a month or two."

Prior to the delay, the church was tentatively scheduled to open for Easter. Services are currently held at Milton District High School.

WE CAN HELP YOU STEER

CLEAR OF THE WINTER BLUES.

WINTER MAINTENANCE PACKAGE

\$39⁹⁵
Plus tax

Lube, oil and filter • 15 point inspection including antifreeze, tires, wipers, hoses & belts • Tire rotation • Brake inspection • Top up fluids • Set tire pressure

INCLUDES AN ELECTRONIC BATTERY TEST.

WINTER BRAKE PACKAGE

From **\$119⁹⁵**
Plus tax

Replacement of front pads or linings with ACDelco DuraStop™ parts • Brake fluid top up • 1 year or 20,000 km labour warranty • Machining of rotors and drums extra, if required

LIMITED LIFETIME WARRANTY ON PADS AND SHOES.

ASK FOR OUR ACDELCO BATTERIES FOR QUICK-SURE STARTS THIS WINTER, NEXT SPRING AND YEARS TO COME.



We support:



For the air we breathe™



Goodwrench Service
Right. On time.

At your GM Dealership. www.goodwrench.gmcanada.com 1-800-GM-DRIVE