



# GENERAL MOTORS HOLIDAY RING IN AND WIN

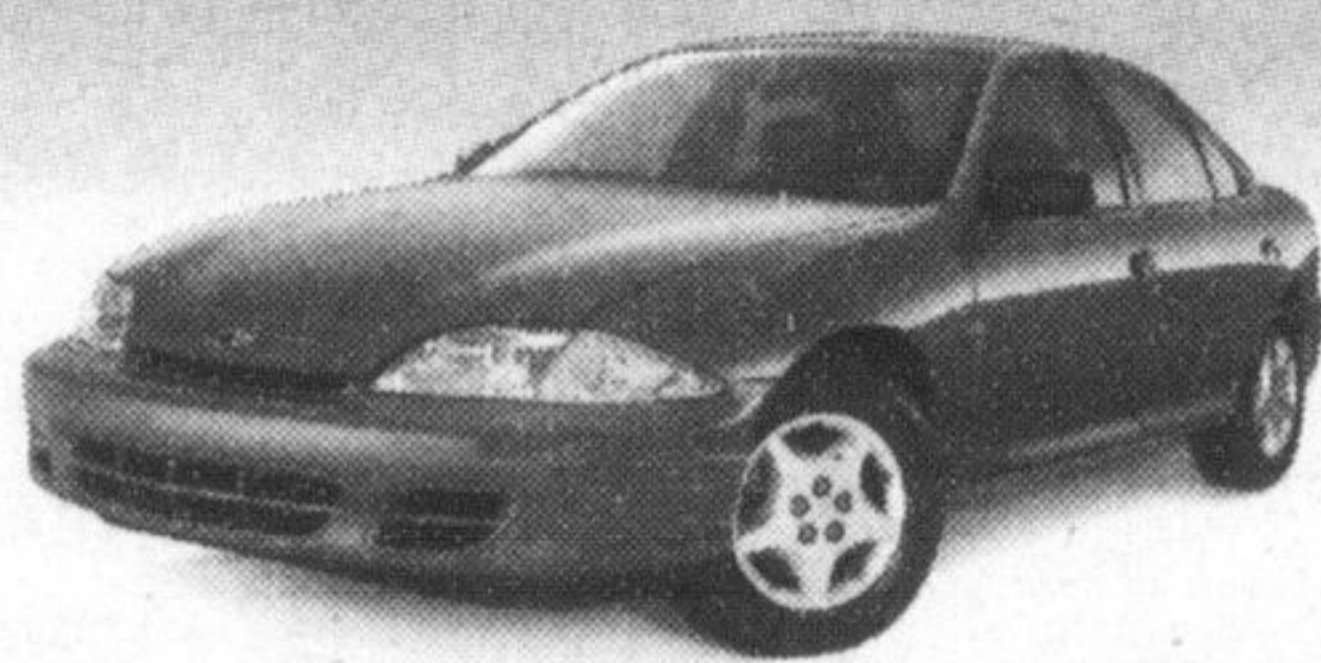


**GUARANTEED**  
**\$500**  
OFF YOUR LEASE OR PURCHASE\*

**UP TO**

**WIN**  
YOUR  
**VEHICLE\***

on virtually all 2001 and 2002 vehicles



**CHEVROLET CAVALIER VL COUPE OR SEDAN**

- 5-Year/100,000 km Powertrain Warranty • 2.2 Litre 115-HP Engine • 5-Speed Getrag Transmission
- 4-Wheel Anti-Lock Braking System • PASSLock Theft Deterrent System • Sporty Rear Spoiler (Coupes only)
- Electric Trunk Release • Dual Front Air Bags

SMARTLEASE	CASH PURCHASE	PURCHASE FINANCING
<b>\$226</b> <sup>1</sup> PER MO/48 MO INCLUDES FREIGHT LEASE	<b>\$12,498</b> <sup>2</sup> OR EXCLUDES FREIGHT	<b>0%</b> <sup>3</sup> OR UP TO 48 MONTHS



**ALERO GX SEDAN BY OLDSMOBILE**

- 5-Year/100,000 km Powertrain Warranty • 2.2 Litre DOHC All-new Ecotec Engine • Automatic Transmission with Enhanced Traction System • Air Conditioning • AM/FM Stereo CD with 6-Speaker System
- Cruise Control • Power Driver's Seat • 4-Wheel Disc Brakes with ABS • and More

SMARTLEASE	CASH PURCHASE	PURCHASE FINANCING
<b>\$313</b> <sup>1</sup> PER MO/48 MO INCLUDES FREIGHT LEASE	<b>\$19,988</b> <sup>2</sup> OR EXCLUDES FREIGHT	<b>0%</b> <sup>3</sup> OR UP TO 48 MONTHS



**CHEVROLET MALIBU**

- 3.1 Litre 170-HP V6 Engine • 4-Speed Automatic Transmission • Air Conditioning • 60/40 Split-Folding Rear Seats • 4-Wheel Anti-Lock Braking System • Cruise Control • Remote Keyless Entry • AM/FM Stereo with CD

SMARTLEASE	CASH PURCHASE	PURCHASE FINANCING
<b>\$248</b> <sup>1</sup> PER MO/48 MO \$2,675 DOWN PAYMENT PLUS FREIGHT	<b>\$19,998</b> <sup>2</sup> OR EXCLUDES FREIGHT	<b>0%</b> <sup>3</sup> OR UP TO 48 MONTHS

**PLUS**



**CHEVROLET VENTURE VALUE VAN**

- 3.4 Litre 185-HP V6 Engine • 4-Speed Automatic Transmission • 4-Wheel Anti-Lock Brakes • Air Conditioning
- Standard Integral Child Seat • Power Locks and Tilt-Wheel • AM/FM Stereo with CD • Dual Sliding Doors

SMARTLEASE	CASH PURCHASE	PURCHASE FINANCING
<b>\$238</b> <sup>1</sup> PER MO/48 MO \$4,055 DOWN PAYMENT PLUS FREIGHT	<b>\$22,998</b> <sup>2</sup> OR EXCLUDES FREIGHT	<b>0%</b> <sup>3</sup> OR UP TO 48 MONTHS

★★★★★  
**FIVE STAR SAFETY RATING.**  
Chevrolet Venture has been awarded 5-Stars (the top safety rating) for both driver and rear-seat passenger in side-impact testing.<sup>a</sup>

**ENERGUIDE**  
The most fuel efficient van in its class<sup>b</sup>



**CHEVROLET IMPALA**

- 3.4 Litre V6 180-HP SFI Engine • Automatic Transmission • Air Conditioning • 6-Passenger Seating
- AM/FM Stereo CD • Cruise Control • Power Windows/Locks/Mirrors • Remote Keyless Entry

SMARTLEASE	CASH PURCHASE	PURCHASE FINANCING
<b>\$278</b> <sup>1</sup> PER MO/48 MO \$3,250 DOWN PAYMENT PLUS FREIGHT	<b>\$23,498</b> <sup>2</sup> OR EXCLUDES FREIGHT	<b>0%</b> <sup>3</sup> OR UP TO 48 MONTHS

★★★★★  
**FIVE STAR SAFETY RATING.**  
Chevrolet Impala has earned a five-star government front crash test rating for both driver and front passenger.<sup>a</sup>



**CHEVY TRACKER**

- Fully Equipped with LXT Appearance Package • 2.0 Litre 127-HP DOHC Engine • 4-Speed Automatic Transmission • Air Conditioning • AM/FM Stereo with CD • Power Windows/Locks/Mirrors • 15" Aluminum Wheels • Shift-on-the-Fly 4WD System

SMARTLEASE	CASH PURCHASE	PURCHASE FINANCING
<b>\$268</b> <sup>1</sup> PER MO/48 MO \$4,255 DOWN PAYMENT PLUS FREIGHT	<b>\$25,998</b> <sup>2</sup> OR EXCLUDES FREIGHT	<b>0%</b> <sup>3</sup> OR UP TO 36 MONTHS

0% Purchase Financing<sup>1</sup> also available on 2002 Camaro, Intrigue, Aurora, Silhouette, Bravada, Astro, Blazer, TrailBlazer, S-10, Silverado 1500, Avalanche, Tahoe and Suburban. Lease Rates as low as 1.9% available AND for a limited time, no security deposit required.



FOR THE LATEST INFORMATION VISIT US AT [gmcanada.com](http://gmcanada.com) DROP BY YOUR LOCAL CHEVROLET OLDSMOBILE DEALER, OR CALL US AT 1-800-GM-DRIVE.

\*No Purchase Necessary. Contest open to Canadian residents only. Contest closes January 13, 2002. Prizes can only be applied to the purchase or lease of most 2001 and 2002 vehicles purchased/leased and delivered before January 13, 2002. See your GM Dealer or visit [gmcanada.com](http://gmcanada.com) or call 1-800-GM-DRIVE for full contest rules. <sup>Δ</sup> Driver and front passenger crash test (for Impala). Tests conducted by the US National Highway and Traffic Safety Administration (NHTSA). <sup>▲</sup> Best in class. Based on Transport Canada Fuel Economy Ratings. <sup>\*\*</sup> For 2002 Cavalier and 2002 Alero only. General Motors will pay first month's lease payment (including PST/GST as applicable) plus security deposit and PPSA. Freight of \$795/\$830 (Cavalier/Alero) included. Other lease options available. <sup>††</sup> "Drive Away Lease" offer does not apply to purchase financing offer. <sup>†</sup> Based on a 2.9%/3.4%/3.9%/2.9%/1.9% annual lease rate (Cavalier VL Sedan/Coupe R7A/Malibu R7C/Alero GX Sedan R7A/Impala R7A/Venture Value R7A/Tracker R7D), 48-month term. \$0.12/km charge over 80,000 km for 48 months. Option to purchase at lease end is \$5,659/\$5,881/\$9,928/\$9,440/\$10,957/\$10,804/\$11,141 (Cavalier VL Sedan/Coupe R7A/Malibu R7C/Alero GX Sedan R7A/Impala R7A/Venture Value R7A/Tracker R7D) plus applicable taxes. Licence, insurance, registration, PPSA (for Malibu/Impala/Venture/Tracker), administration fees and taxes not included. <sup>‡</sup> 0% purchase financing on approved GMAC credit only for most 2001 and 2002 vehicles. Offer applies only to vehicles delivered on or before January 13, 2002. Term up to 48 months for most 2001 and 2002 cars. Term up to 36 months for most 2001 and 2002 trucks. Down payment and/or trade may be required. Monthly payment and cost of borrowing will vary depending on amount borrowed and down payment/trade. Example: \$10,000 at 0% APR, the monthly payment is \$277.78/\$208.33 for 36/48 months. Cost of borrowing is \$0.

Total obligation is \$10,000.00. <sup>▼</sup> The SMARTLEASE monthly payment and the GMAC purchase finance rate are not available with and are not calculated on the "Cash Purchase" price as shown. The difference between the price for the SMARTLEASE/GMAC Purchase Finance offer and the "Cash Purchase" offer is deemed under provincial disclosure laws to be a cost of borrowing, whether or not the same represents actual interest and is required to be expressed as an annual percentage rate of 7.47%/5.90%/3.59%/3.07%/3.13%/2.47% (Cavalier VL Sedan/Coupe R7A/Malibu R7C/Alero GX Sedan R7A/Impala R7A/Venture Value R7A/Tracker R7D). <sup>†††</sup> Offers apply as indicated to new or demonstrator 2002 models of Cavalier VL Sedan/Coupe R7A/Malibu R7C/Alero GX Sedan R7A/Impala R7A/Venture Value R7A/Tracker R7D equipped as described. Offers apply to qualified retail customers in the Ontario Chevrolet Oldsmobile Dealer Marketing Association area only (including Outaouais and excluding Northwestern Ontario). Lease and purchase offers do not include freight (\$830/\$950/\$970/\$825 for Malibu/Impala/Venture/Tracker), licence, insurance, registration and taxes. <sup>‡‡</sup> Offers apply to the purchase or lease of most 2001 and 2002 new or demonstrator models and applies only to qualified retail customers in Canada. 0% financing and contest do not apply to 2001/2002 Corvette, 2001/2002 Full size vans-cargo/cutaway, 2002 Silverado Reg. and Ext. Cab 2500/3500 (non C6P), 2002 Silverado Crew Cab 2500/3500 and 2002 Silverado 3500 HD Chassis Cabs (Carryover Style). 0% financing also does not apply to 2001/2002 Chevy Express LT-Y91. Contest also does not apply to 2002 Tahoe and 2002 Suburban. Limited quantities of 2001 models available. Dealer trade of 2002 models may be required. <sup>††††</sup> Dealers are free to set individual prices. Limited time offer which may not be combined with other offers. Certain exceptions apply. See your local GM dealer(s) for conditions and details.

