



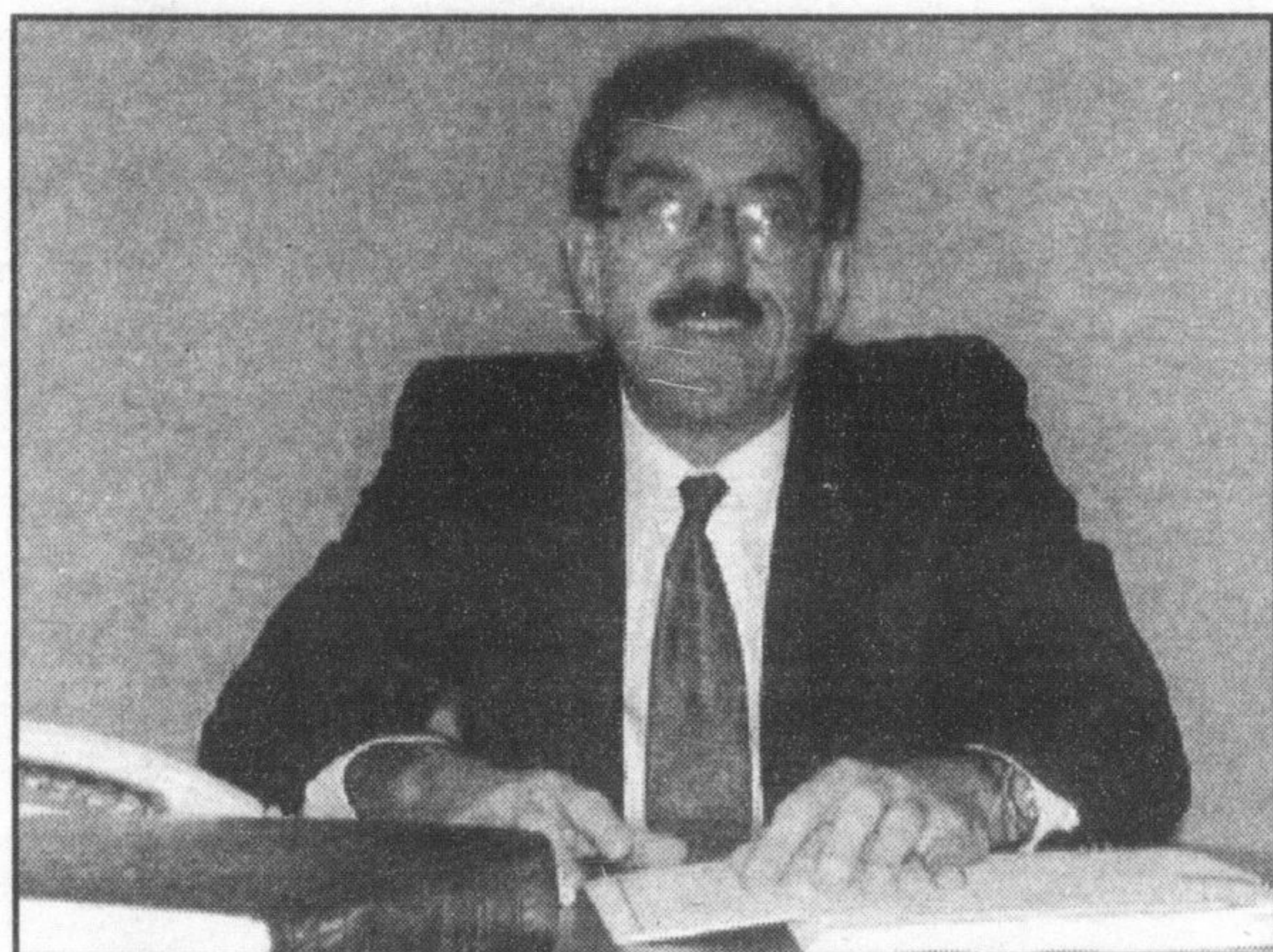
MILTON MONITOR

THE HEARTBEAT OF OUR COMMUNITY

NEWS AND INFORMATION FROM MILTON DISTRICT HOSPITAL

We would like to thank our sponsors, *Halton Automotive, Bill Currie, Robert (Pie) Lee Insurance, McCuaig Insurance Ltd. and McKersie-Kocher Funeral Home Ltd.* for their wonderful support and generosity.

HOSPITAL



✓ DR. SOL STERN NAMED NEW HALTON HEALTHCARE SERVICES CHIEF OF STAFF

The Board of Directors of Halton Healthcare Services is pleased to announce the appointment of Dr. Sol Stern as Halton Healthcare Services' Chief of Medical Staff for a three year term, effective November 1, 2001. Dr. Stern has replaced Dr. Lorne Martin who completed his second term as Chief of Staff on October 31, 2001.

An active member of the medical staff at OTMH since 1983, Dr. Stern has impacted the decision making process at OTMH over the years by serving as President of the Medical Staff, and Chief and Co-Chief of the Department of Family Medicine. In these roles, Dr. Stern has been a member of the Medical Advisory Committee and has worked collaboratively with physicians, hospital staff, administration and the Board of Directors.

"I accepted the role of Chief of Staff because I thought it was time to give back to the community on a more global basis," explained Dr. Stern. "In the role of Chief of Staff I felt I could contribute towards changes that would improve healthcare in the region of Halton. I'd like to see our hospitals continue to build on the existing excellent working relationship, and function as one hospital in order to enhance services in the area and maximize the quality of care for everyone involved. I think it imperative that each hospital maintain its unique culture throughout this process because it enhances our ability to identify with the patients we treat."

DIALYSIS SERVICE EXPANDS

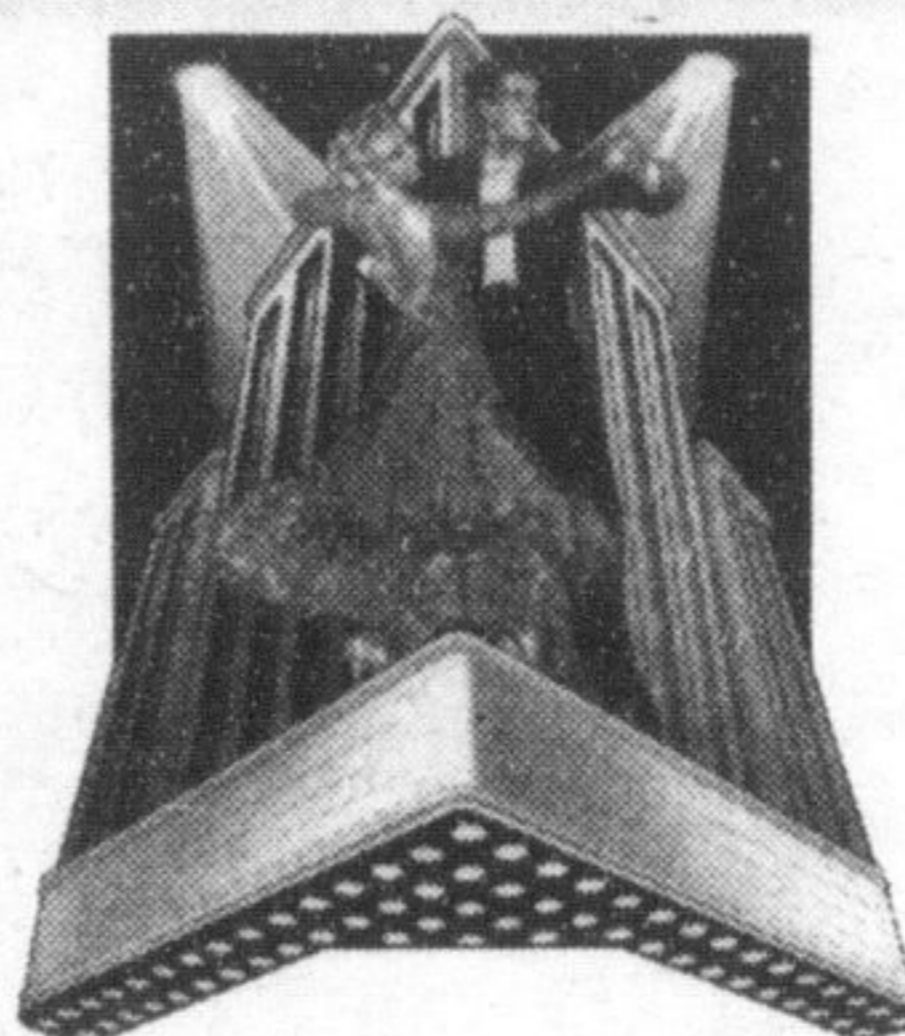
Health Minister, The Honorable Tony Clement was on hand as Halton Healthcare Services (HHS) celebrated the completion of the Renal Dialysis Expansion Project at the Oakville site. Construction of Phase II of the Renal Dialysis Program was completed in September of 2001 with the opening of a second dialysis unit. The program now includes two hemodialysis units, totaling 24 stations, plus the Progressive Renal Insufficiency (PRI) and Early Renal Insufficiency (ERI) Clinics. The expansion has doubled the number of patients that can be accommodated and, for residents of Halton, means increased access to this life-giving service closer to home.

www.haltonhealthcare.com



FOUNDATION

20 YEARS
MILTON DISTRICT HOSPITAL FOUNDATION
CELEBRATING
A COMMUNITY
THAT CARES
(905) 876-7014



THE CRYSTAL BALL...

Join the Foundation for an evening of elegance on Friday, May 3rd. The Crystal Ball will be held at the Rattlesnake Point Golf & Country Club. Tickets are \$175 per person or \$1,750 for a table of 10. The proceeds will be donated to the MDHF's new Mammography Unit campaign.

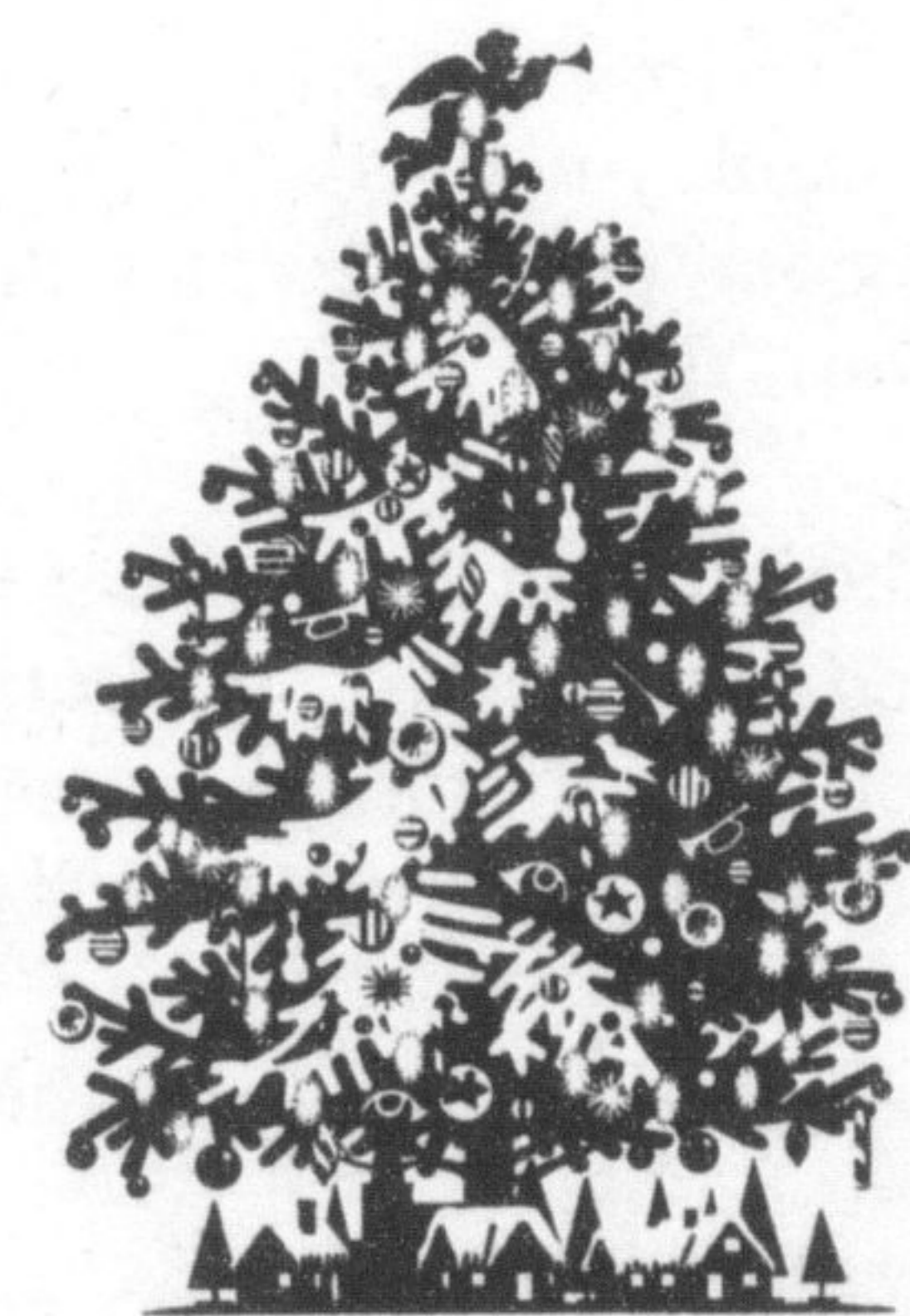
Psst.....Santa wants to tell you a secret. Purchase your ticket before the end of December and the Foundation will give you a beautiful memento of the upcoming magical evening.

PLEASE JOIN US...

at the Annual Tree Lighting ceremony, which will take place on the front lawn of the Hospital on Tuesday, December 11th at 7:30 p.m., See how bright our trees will be thanks to YOUR wonderful generosity. Refreshments will follow the ceremony.

OH CHRISTMAS TREE... OH CHRISTMAS TREE!

6-7 foot Spruce Christmas trees will be sold at Frank Ruhl's tree farm located at 6607 First Line, Milton (1/2 mile south of the Hospital) after December 1st. To guarantee your tree, visit the Foundation office and purchase your tree coupon for only \$20.00 Visit the farm, redeem your coupon and pick up your beautiful tree. ALL proceeds donated to the Foundation. Larger trees are available at an additional cost..



THANKS TO LA ROSE

Sal Lizzi of La Rose Bakery and Michael Beaver, MDHF Board Member

The Milton District Hospital Foundation wishes you a very Merry Christmas!



AUXILIARY

THE MDH GIFT SHOP HAS BECOME A CHRISTMAS SHOP!

The Gift Shop has a wonderful selection of Holiday decorations and gifts. It is the exclusive distributors, in Milton, for "Clayworks", a line of porcelain houses and decorations designed by a Canadian artist. The shop has extended hours from now to Christmas. It is open from Monday to Friday, 11 a.m. to 8:00 p.m., Saturdays from 11 a.m. to 4 p.m. and Sundays from noon to 4:00 p.m.

Don't forget to purchase a **Heritage Tapestry Afghan**. These beautiful afghans feature historical buildings and favorite Milton landmarks. They are 100% cotton and machine washable. The price is only \$99.00 which includes all taxes. Orders taken in the Gift Shop.



MDH Auxiliary Members, *Grace Hildebrand, Katherine Fabi and Shelia Raspberry*

GIFT WRAPPING SERVICE

Drop into the Milton Mall between December 14th and Christmas Eve and let the Auxiliary members wrap your gifts! The Auxiliary would like to take this opportunity to thank the members, hospital staff and the community for supporting the Auxiliary throughout the year. We wish you a Merry Christmas!



MILTON DISTRICT HOSPITAL
Quality Care for a Healthier Community.