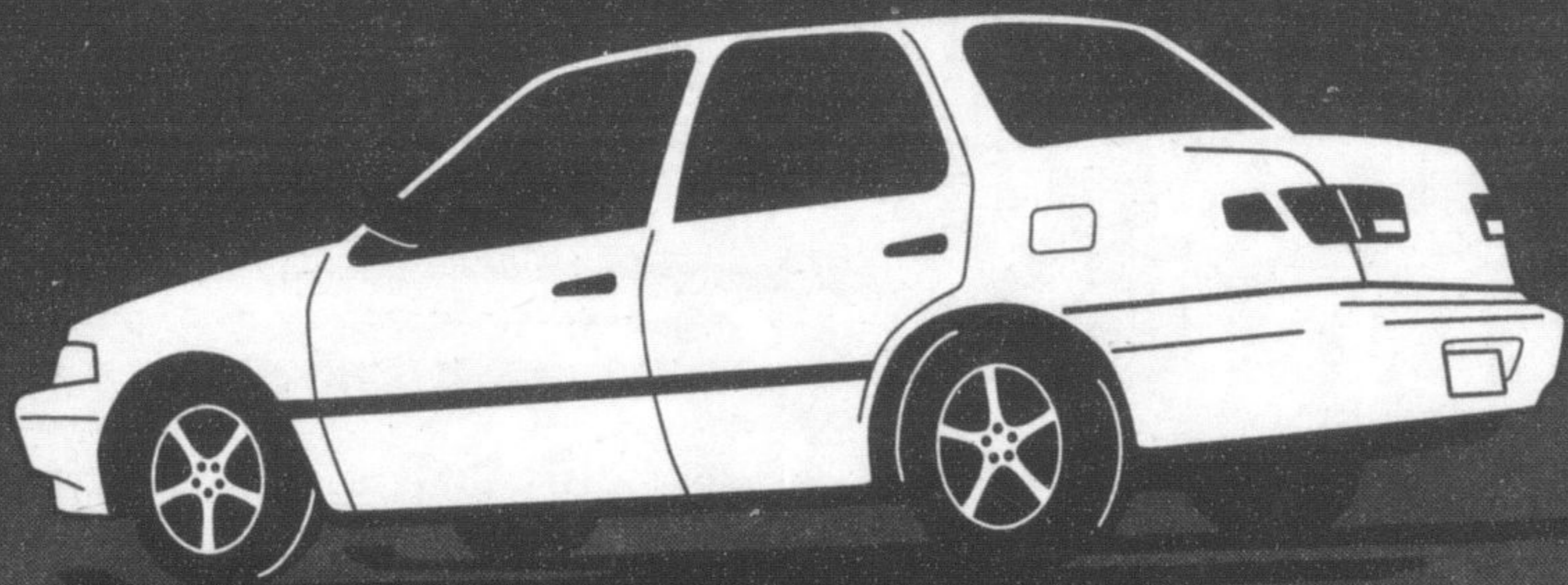


Have a safe and happy Halloween!



You are driving around in one of your largest investments.

Don't take chances choosing your mechanic.

Choose Experience, Choose Reliability, Choose...

- Brake Service
- Steering & Suspension
- MOT Safety Inspection
- Computer Diagnostics
- Tires
- Air Conditioning Service
- Auto Electric and Charging Systems
- General Repairs

All makes & models



For the Air We Breathe

**K&B AUTO SERVICE**

715 Main Street E. Milton 876-3148



KEVIN BLACKLOCK

Nothing to do?  
No place to go?



November 2 - 4, 2001  
International Centre, Mississauga

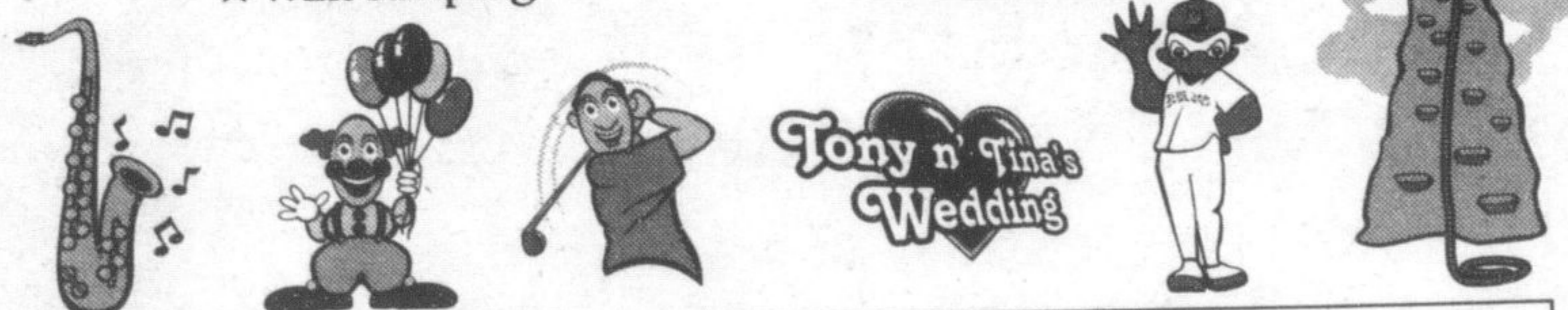
★ Free trip giveaways ★ Free Parking ★ Kids under 12 FREE

Things to do. People to see. Places to go. The 2001 Travel & Leisure Show is where you want to be.

Everything under the sun. Check out hundreds of exhibits, including tour operators, air, rail and cruise lines, hotels, spas and luxurious resorts. Take advantage of great deals and special discounts on a wide variety of trips and destinations.

Other highlights:

- ★ Live entertainment
- ★ Indoor golf driving range
- ★ Performances by Cirque Éloize
- ★ D-Jay the Clown
- ★ Wine sampling
- ★ Blue Jays pitching cage
- ★ 24' Climbing wall
- ★ Cooking demos courtesy of Longo's Kitchen catering
- ★ And much more...



Weekend Highlights

**Fifty-Plus Day**  
Friday, November 2  
12:00pm - 9:00pm

**Honeymoon Day**  
Saturday, November 3  
10:00am - 6:00pm

**Family Day**  
Sunday, November 4  
10:00am - 5:00pm

Admission: Adults \$10 • Seniors (50+) & Youths \$7 • Kids under 12 FREE (when accompanied by an adult)

Sponsored by:



See Web site for special admission discounts at: www.TravelandLeisureShow.com Show Hotline: 416-201-4787

Are you getting the financial advice you need?

Your financial plan should include:

- ◆ Retirement Strategies
- ◆ RESP and Education Planning
- ◆ Estate Planning
- ◆ Tax Minimization
- ◆ Life and Disability Insurance
- ◆ Professional Investment Management



For a Personal Financial Consultation call:

**Douglas Riding**

(905) 876-2400 ext. 226 or (905) 624-7526 ext. 226

Investment Planning Counsel<sup>TM</sup>  
of Canada

FINANCIAL PLANNING PROFESSIONALS



Gary Thomas  
Associate Broker

**RE/MAX**  
Blue Springs Realty (Halton) Corp.

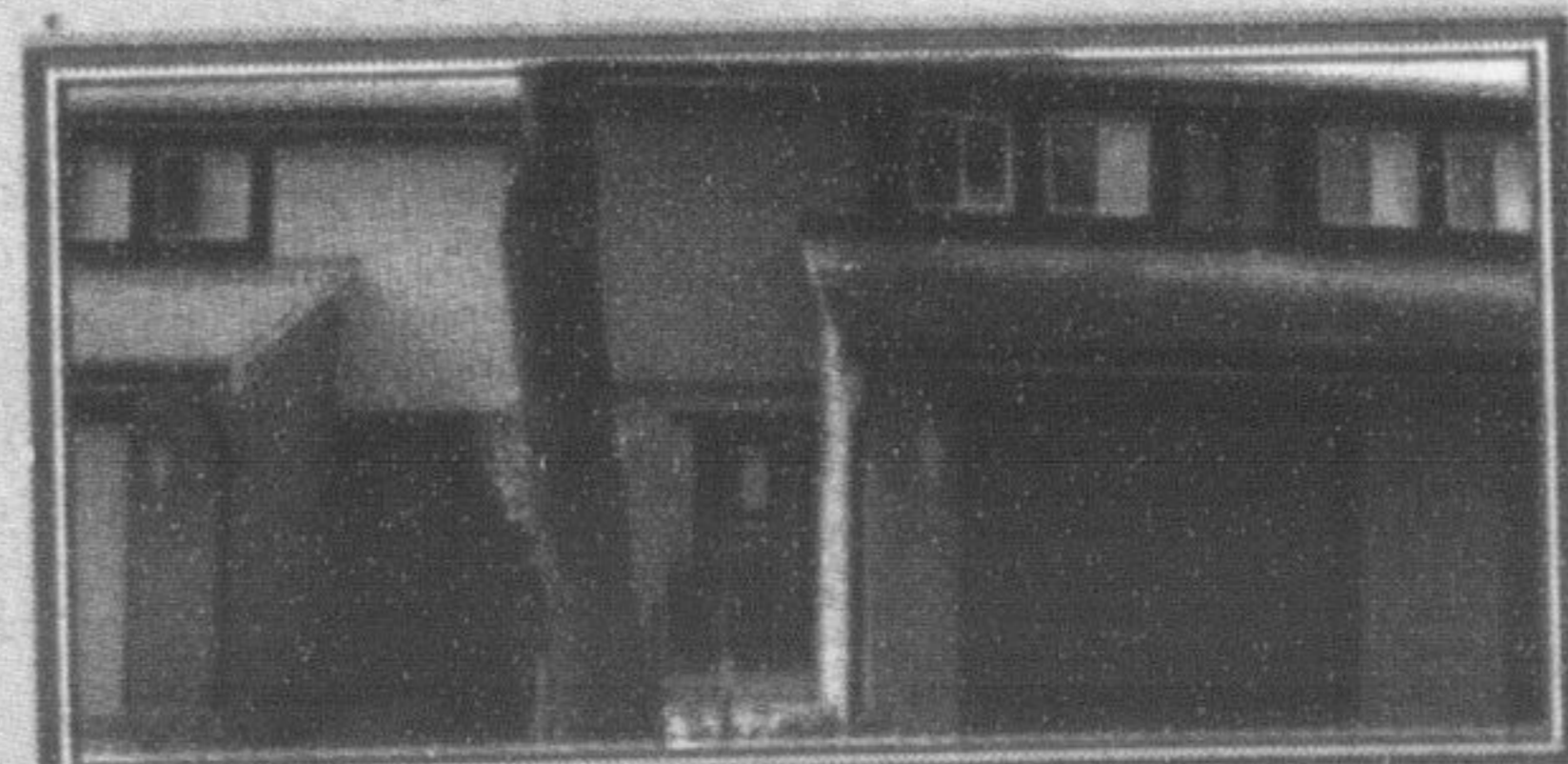
Call 905-878-7777  
Serving Milton since 1970 Recipient Hall of Fame Award  
Distinguished Service Award 100% Club



Rarely found in town a property of this size surrounded with mature trees. This 3 bedroom home has a main floor family room with walk-out, office or 4th bedroom, rec room, cold cellar, eat-in kitchen, over 2000 sq.ft. of space, double paved drive, utility shed, gas fireplace. All this centrally located in the beautiful town of Milton. \$239,500.



A delightful alternative for a buyer who wishes a large private fenced backyard. This 4 bdrm tudor style raised bungalow can be any family's home for a lifetime. Furnace replaced in '97; cedar deck; large family room; great location; priced to sell at \$234,500. Call for appt. today!



This complex of townhomes has always been one of Milton's finest. Centrally located and backs onto parkland. Glass sliders to private yard. Vacant and waiting for your family. Call to view, I have the key to your future home. \$139,900.

Try these safety tips for trick-or-treating

It's almost that time of year when witches, ghosts and goblins will roam the streets.

Halton Regional Police have put together a list of safety tips for trick-or-treaters.

• When picking out a costume it should be bright and reflective and short enough that it won't be tripped on.

• Masks can limit or block eyesight. Consideration should be given to using non-toxic make-up and decorative hats as a safer alternative.

• Use flashlights with fresh batteries, both for the kids and escorts.

• Parents should discuss with their children what's appropriate and inappropriate behaviour.

• Trick-or-treaters should stay in groups and always let someone know where they're going.

• A parent or adult should escort smaller children.

• Older children should let their parents know the route they're taking and when they'll be back.

• Trick-or-treaters should only go to homes that have a porch light on. They should never go into a home or car to get a treat.

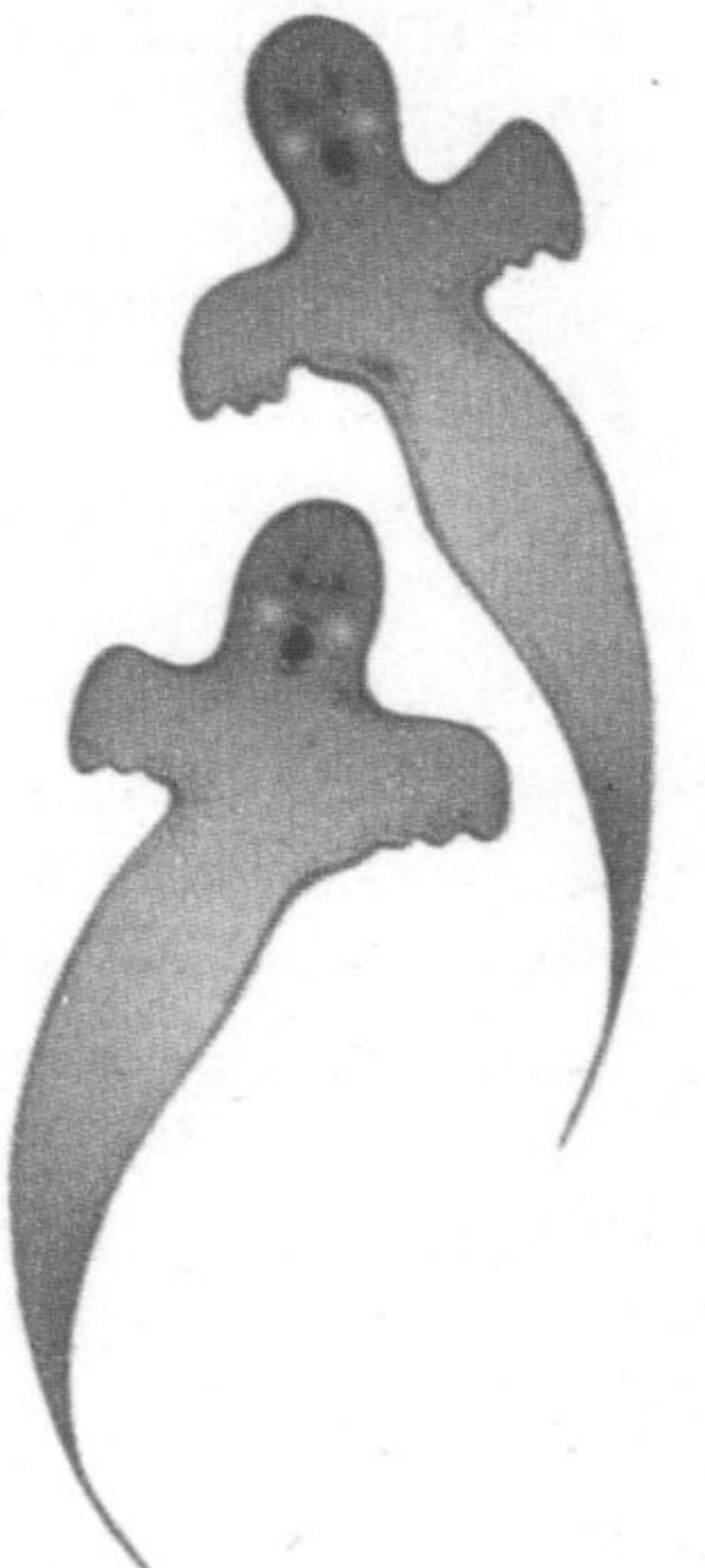
• Trick-or-treaters should stay on well lit streets and never cut across lawns or use alleys.

• Trick-or-treaters should stay on sidewalks. If there isn't a sidewalk, they should walk on the edge of the roadway facing traffic.

• Trick-or-treaters shouldn't assume that if one vehicle stops that the others will. Sometimes motorists have trouble seeing trick-or-treaters.

• Children shouldn't eat any treats until they've been thoroughly checked by parents or an adult. Children should eat a good meal before they go out. It will help to deter them from snacking.

• Item should be removed from lawns and steps to prevent children from injury.



Is there anyone who doesn't know someone whose life hasn't been adversely affected by a critical illness?

For **FREE** Information Package and a quote on Critical Illness Coverage

www.johndepass.com  
or  
1-800-805-9363