

Mayor wants town to have say on proposed highway

By RICHARD VIVIAN
The Champion

Halton municipalities want to be included in discussions with the Province on the proposed Niagara Mid-Peninsula Highway.

Regional council approved a motion Wednesday that will see the involvement of any Halton municipality that wishes to take part in the communication strategy with the Province.

The Province is currently preparing the terms of reference for an environmental assessment study to be conducted along the path of the proposed highway. The study will then be used in determining what the preferred route should be.

The six-lane highway is current-

ly proposed to run between No. 1 Sideroad and No. 2 Sideroad in Burlington to the Niagara area as an alternative to the QEW.

"I am not opposed to the development of this highway, but it does affect all of us and I think we should be included," Mayor Gord Krantz told regional council Wednesday.

"I think we have a part to play in all of this."

Mr. Krantz's comments followed a recommendation of the planning and public works committee in late September that would have seen the City of Burlington and Halton Region share their concerns about the highway's proposed location with the Province.

"But this is not specific to Burlington. I think any of the

municipalities who want to be involved with this should be," Mr. Krantz continued.

Concerns were raised last week by Burlington Councillor John Taylor that the placement of the proposed highway would cause urban development to extend into current agricultural land. Such development, he said, would cause damage to not only rural lands, but also to wildlife in the Niagara Escarpment.

"If this highway goes in where they're proposing, there will be enormous pressure for development on the north side of Highway 5," he told the committee.

"If this goes ahead like its proposed, it will destroy Burlington in its intent to balance urban and rural."

Fraud suspects set trial, hearing dates

Three people charged with fraud over \$5,000 in connection with dealings at the Village Pine Shoppe in Campbellville appeared in court in Milton last week.

Campbellville resident Charles

Currie made a brief appearance in court October 1 and will go to trial in Superior Court in Milton January 21.

Campbellville residents Oriana Currie and Sheri Duff made a brief

appearance in court Thursday and will appear in Ontario court (provincial division) in Milton October 30 for a preliminary hearing, a hearing to determine if enough evidence exists to go to trial.

1 in 10 women will develop BREAST CANCER

The risk increases with age. The Ontario Breast Screening Program provides breast examination and a mammogram at no cost to women who are 50 years of age or over.

Make your appointment today!

After all...
It's your life

For the centre nearest you call:

1-800-668-9304



The Ontario Breast Screening Program is a program of The Ontario Cancer Treatment and Research Foundation

The NEW
Champion Circulation Phone
is
905-878-5947

If you have children aged 6 and under...
If you provide child care in your home...



Then we'd like to hear from you.

The provincial government has announced that Early Years Centres will be established across the province. Halton Region has been selected as a location for three provincial Early Years Centres. We want to know what programs and services you feel are needed in your community.

How can you help? Attend a focus group in your community or complete our parent survey which will be distributed throughout Halton and can also be completed on-line by visiting the following Web site:
<http://www.region.halton.on.ca/SCS/ChildCare/providerinfo/ourkidsnetwork.htm>

Focus groups will be held in:

- | | |
|-------------------|---|
| Milton | Tuesday, October 16, 2001
Milton Leisure Centre
1700 Main Street East, Milton |
| Georgetown | Wednesday, October 17, 2001
Halton Hills Cultural Centre
9 Church Street, Georgetown |
| Oakville | Thursday, October 18, 2001
Glen Abbey Recreation Centre
1415 Third Line, Oakville |
| Burlington | Monday, October 22, 2001
Burlington Public Library - Tansley Woods
1996 Itabashi Way, Burlington |
| Acton | Tuesday, October 23, 2001
Cobblehill Homes Co-operative
53 Cook Street, Acton |

7:30-9pm, except Tansley Woods where meeting will be 7-8:30pm
To register for a focus group, please phone:
(905) 825 6000 / 1-866-442-5866 ext 7174
Thank you. Your input is important.

EXTENDED
UNTIL
OCT 15TH

Wallace's MILTON WIDE CLEAR-OUT

ONLY 7 DAYS LEFT!

0.9% FINANCING
(Unlimited Financing OAC 48 months)
Lease rates as low as 0.9% on selected models
Low 60 month financing as well

FIRST MONTH FREE UP TO \$500

2001 SUNFIRES



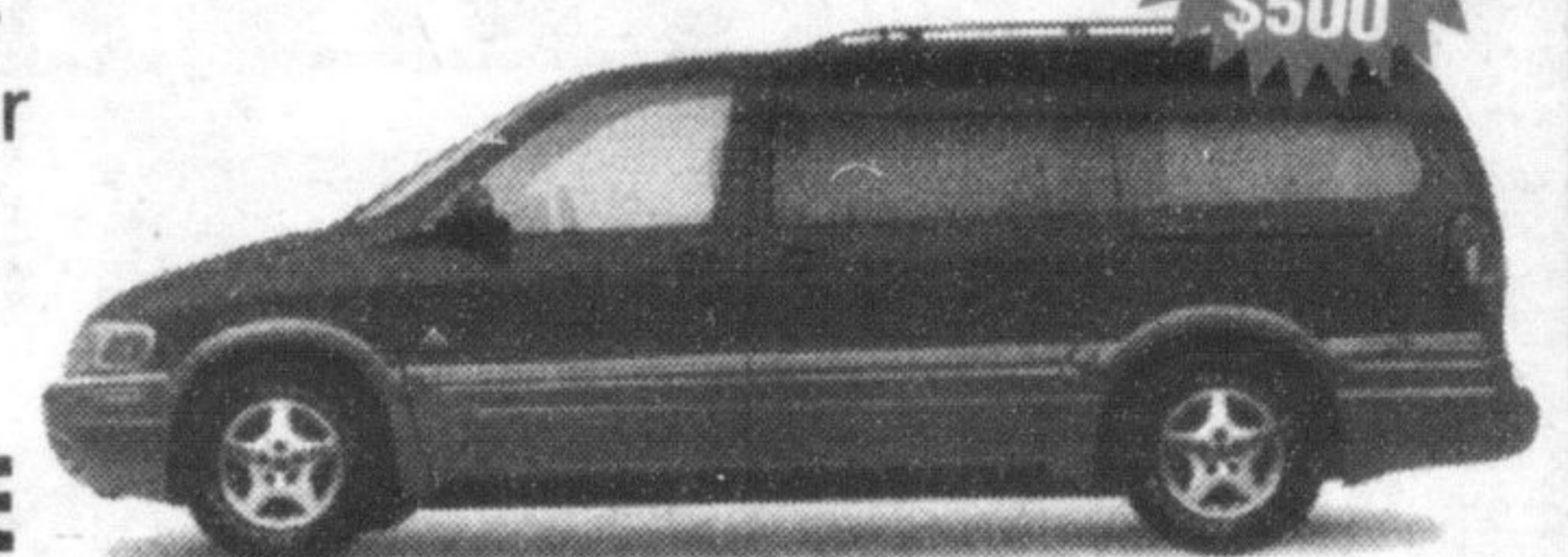
- 4 door • CD player • Air
- Auto • Keyless Remote
- Spoiler • Power Locks

CASH PURCHASE PRICE
\$17,445 +FRT +TAX

2001 MONTANA VANS

FIRST MONTH FREE UP TO \$500

- SWB • Power Windows
- Air • Auto • 7 Passenger
- Tinted Glass
- Power Locks



CASH PURCHASE PRICE
\$24,928 +FRT +TAX

2001 SIERRA EXT. CABS

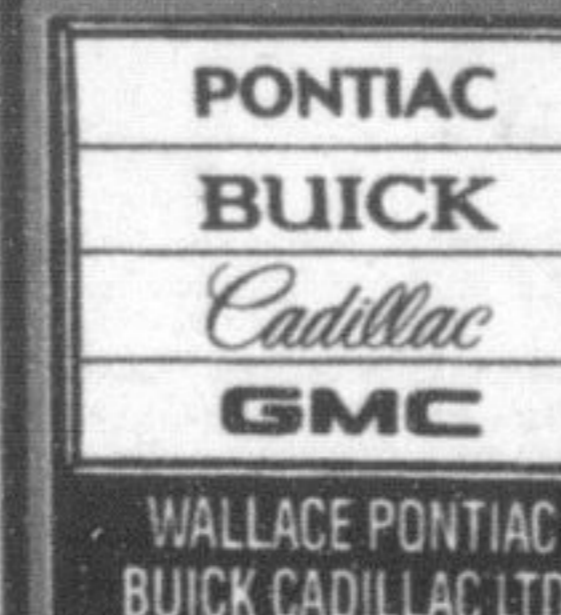


- 4.8L V8 • Carpeting
- Tinted Glass • Auto • Air

CASH PURCHASE PRICE
\$27,998 +FRT +TAX

ONLY 27 2001 VEHICLES LEFT TO GO!
ALL VEHICLES MUST BE SOLD!
PLUS 6 DEMO VEHICLES

*Vehicles may not be as illustrated



Wallace

PONTIAC • BUICK • CADILLAC

(905) 878-2355

New Address

801 MAIN ST. E. MILTON
MON. - THURS.
9:00 AM - 9:00 PM
FRI. & SAT.
9:00 AM - 6:00 PM

TOLL FREE 1-800-878-2354

• PONTIAC • BUICK • CADILLAC • GMC • PONTIAC • BUICK •