



WHICH VACATION PICTURE

WILL YOU BE IN THIS SUMMER?

It may be time for a cooling system check-up!





HAVE YOUR COOLING SYSTEM
Inspected & flushed before heading out on that long TREK!!



Environmentally conscientious. Our used anti-freeze is taken away to be recycled.



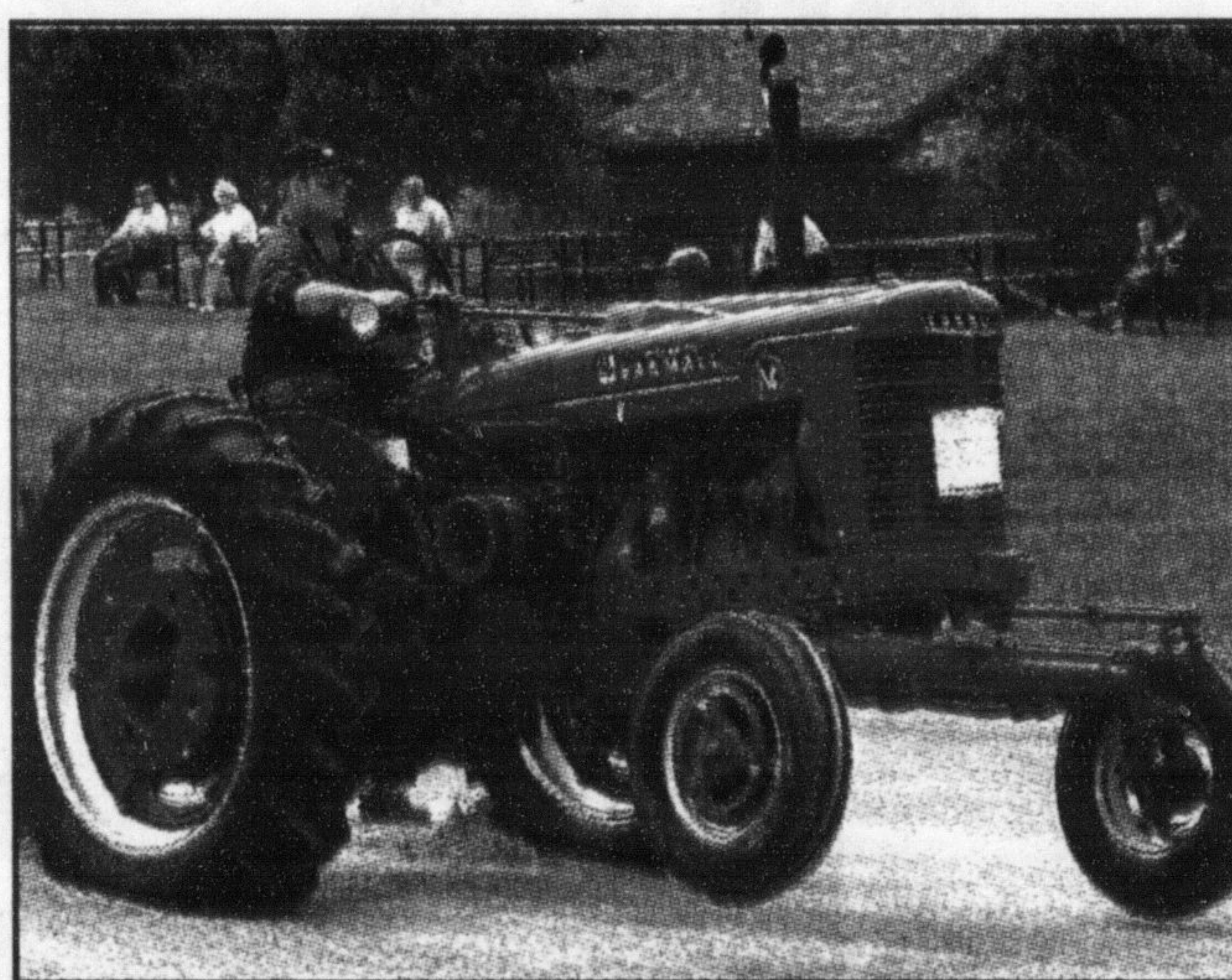
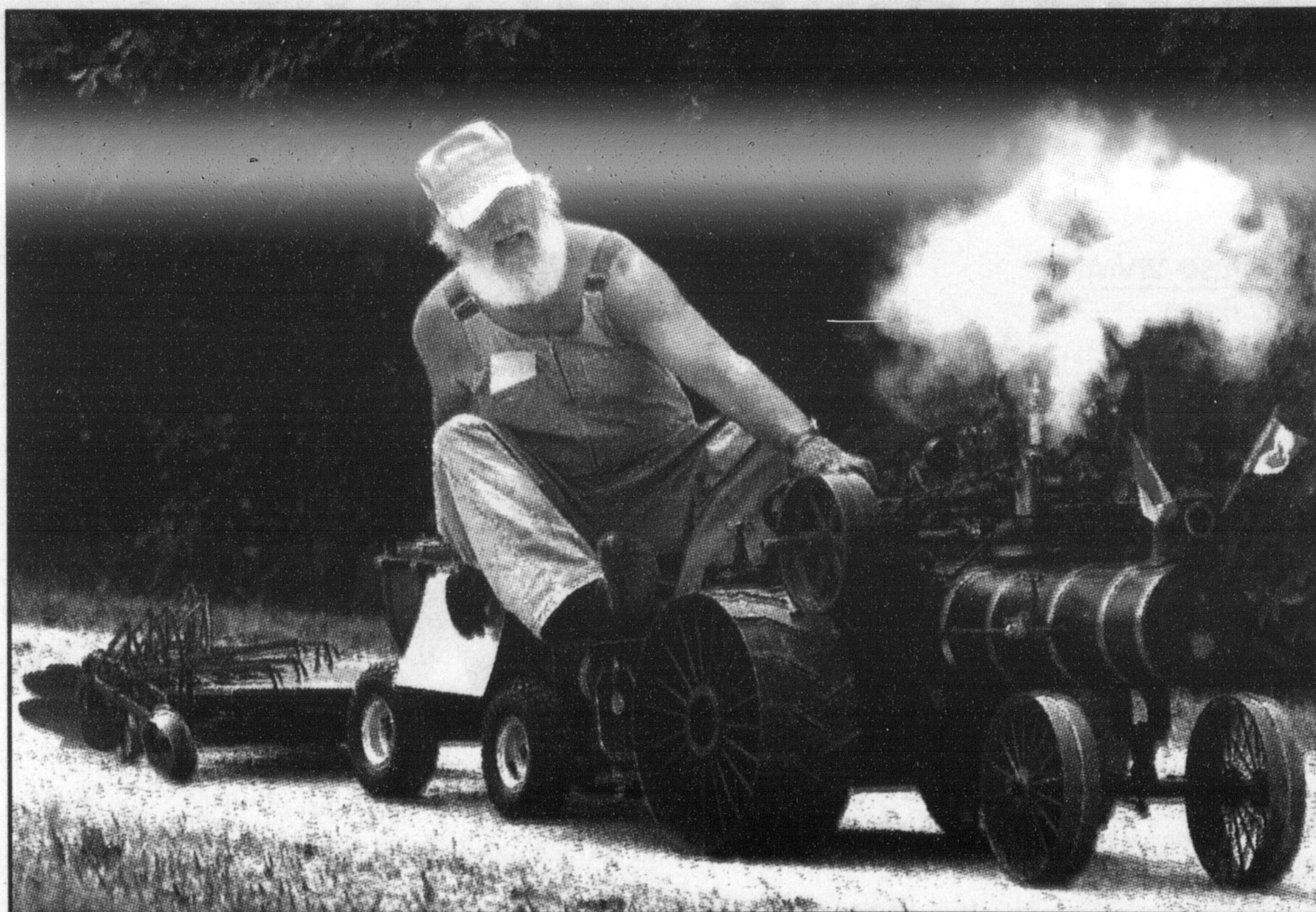
Accredited Test & Repair Facility

Brian's

Auto Repairs & Tire Centre
For all Your Auto Needs!

390 Ontario St. N. Unit #1, Milton
HOURS: Mon. - Fri. 7-6, Sat. 8-12 except long weekends **875-1522**





Full of steam

Bob Hillis (above) chuggs along on his one-quarter scale model of a 1915 steam engine at the Antique Tractor and Toy Show at Country Heritage Park over the weekend. At left, a Farmall tractor competes in the tractor pull.

Photos by GRAHAM PAINE



THE CORPORATION OF THE TOWN OF MILTON

TTY: 878-1657

878-7211



Request for Bid Sale of Lands for Tax Arrears by Public Tender

Take notice that tenders are invited for the purchase of land described below and will be received until Wednesday August 22, 2001 at 11 a.m. at the Purchasing Department, 2nd Floor Town Hall, 43 Brown Street, Milton ON L9T 5H2.

The Tenders will then be opened in public on the same day at the Town of Milton; same address as listed above.

Description of Lands:

1.	Reference	#01-178
	Roll Number	090.040.11801
	Location	00000 Lower Base Line 93.79 AC
	Minimum Tender Bid	\$53,672.32
2.	Reference	#01-179
	Roll Number	090.110.03120
	Location	00000 25 HWY 2.00 AC
	Minimum Tender Bid	\$15,676.64

Tenders must be submitted in the prescribed form and must be accompanied by a deposit in the form of a Money Order, Bank Draft or Certified Cheque, by a bank or trust Corporation payable to the municipality and representing at least 20 per cent of the tendered amount.

The municipality makes no representation regarding the title to or any other matters relating to the land to be sold. Responsibility for ascertaining these matters rests with the potential purchasers. The minimum bid amounts shown include all legal fees, taxes and penalties as of July 27, 2001.

This sale is governed by the Municipal Tax Sales Act and the Municipal Tax Sales Rules made under that Act. The successful purchaser will be required to pay the amount tendered plus accumulated taxes and the relevant land transfer tax and relevant goods and services tax, if applicable.

For further information regarding this sale and a copy of the prescribed Form of Tender, contact:

Leslie Williamson, Coordinator, Purchasing
Town of Milton
43 Brown Street
Milton, ON L9T 5H2
(905) 878-4231

Details can be found on the Town's web site. Plan takers and current and upcoming bids are also posted on the web site.

TAX NOTICE

Ratepayers of the Town of Milton are reminded that the 1st installment of the Final Tax Bill is due on July 31, 2001.

If you require information about taxes, please contact the Corporate Services Tax Department at (905) 878-7252, ext. 2193, 8:30 a.m. to 4:30 p.m., Monday to Friday.

Tax payments must be received in the Corporate Services Office on or before the due date to avoid penalty. Late payment charge of 1 1/4% will be charged on the first day of default and on the first day of each calendar month in which the default continues. It is the responsibility of the ratepayer to ensure that the taxes are paid by the due date, even in the event that the bill is not received as mailed.

Taxes may be paid:

- a) By mail to the Corporate Services Tax Department, 43 Brown St. Milton ON L9T 5H2.
Cheques post-dated to the due date are acceptable and encouraged.
- b) By phone if you bank with Canada Trust, TD Bank, CIBC, Royal Bank or Bank of Montreal. Please call them for details.
- c) By using the mail deposit box to the left of the glass doors at Town Hall.
- d) Between the hours of 8:30 a.m. and 4:30 p.m. at the Corporate Services Tax Department, Town Hall, 43 Brown Street, Milton. (Cheque or money orders preferred rather than cash). Direct Debit now accepted.
- e) Please contact our office for details regarding the "New" pre-authorized tax payment program.