



**WHICH
VACATION
PICTURE WILL
YOU BE IN
THIS SUMMER?**



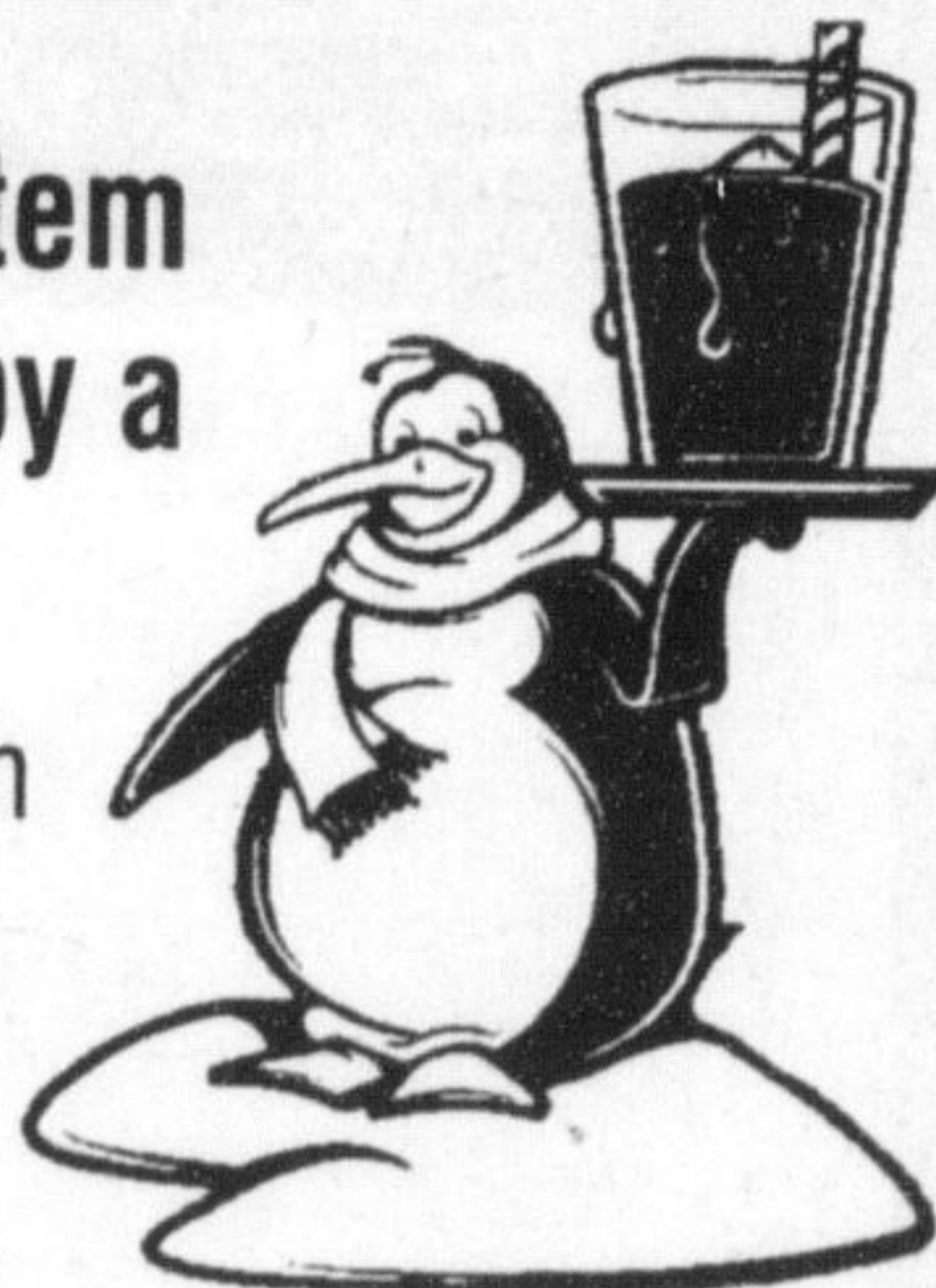
**BRING IN YOUR VEHICLE FOR A CHECK-
UP BY OUR LICENSED AUTOMOTIVE
TECHNICIANS BEFORE YOU TRAVEL.**

AIR CONDITIONING SERVICE



Have your air conditioning system inspected and serviced today by a licensed C.F.C. facility.

Licensed Technician on duty for both R 12 and the new R 134A Freon



Brian's

Auto Repairs & Tire Centre
For all Your Auto Needs!

390 Ontario St. N. Unit #1, Milton

HOURS: Mon. - Fri. 7-6, Sat. 8-12 except long weekends

875-1522



**1st Annual
Sheep Dog Trial**



**June 23 & 24, 2001
10:00 am - 4:00 pm**

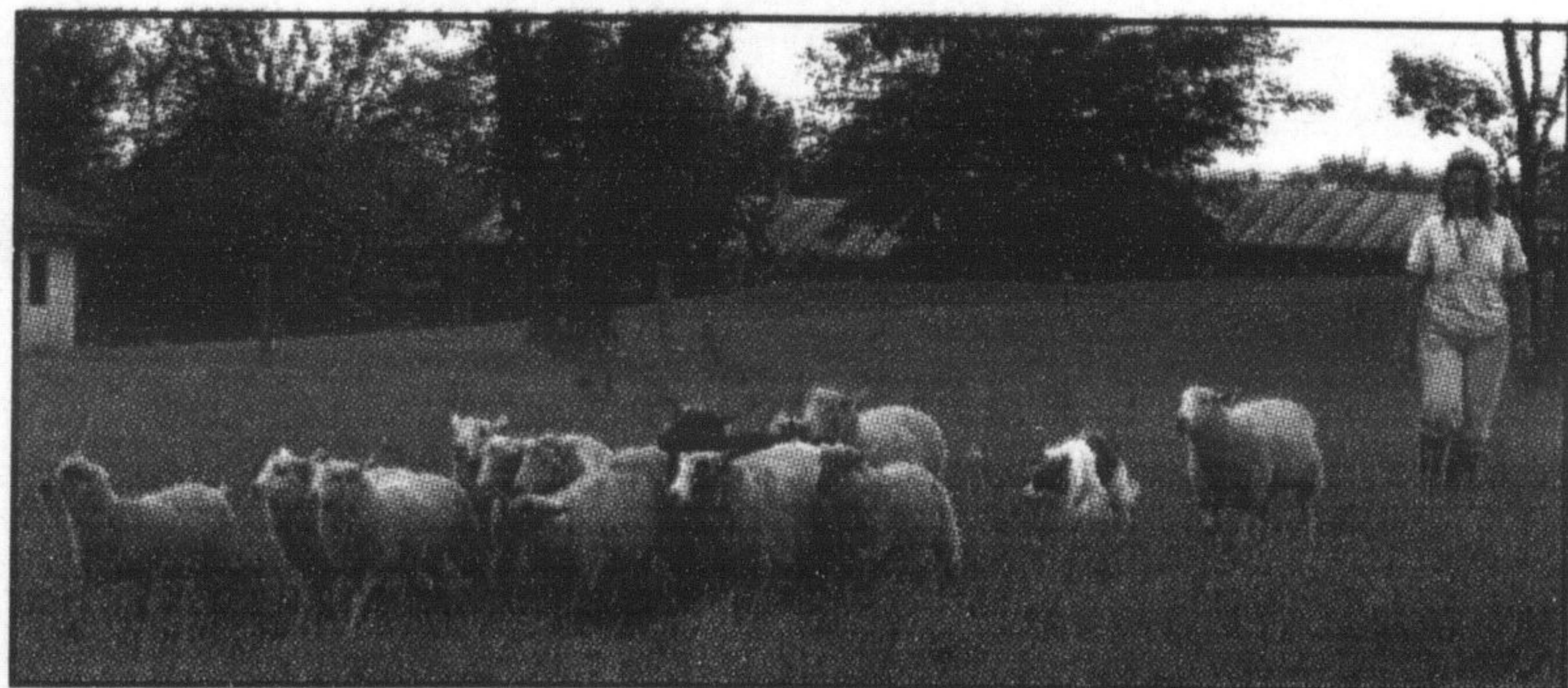
Saturday/Sunday

Lunch time entertainment provided by Time Bandits Flyball Team & K9 sports.com "Iron Dogs" demonstrating various Canine sports including Agility, Flyball, Canine games & Frisbee Tricks.

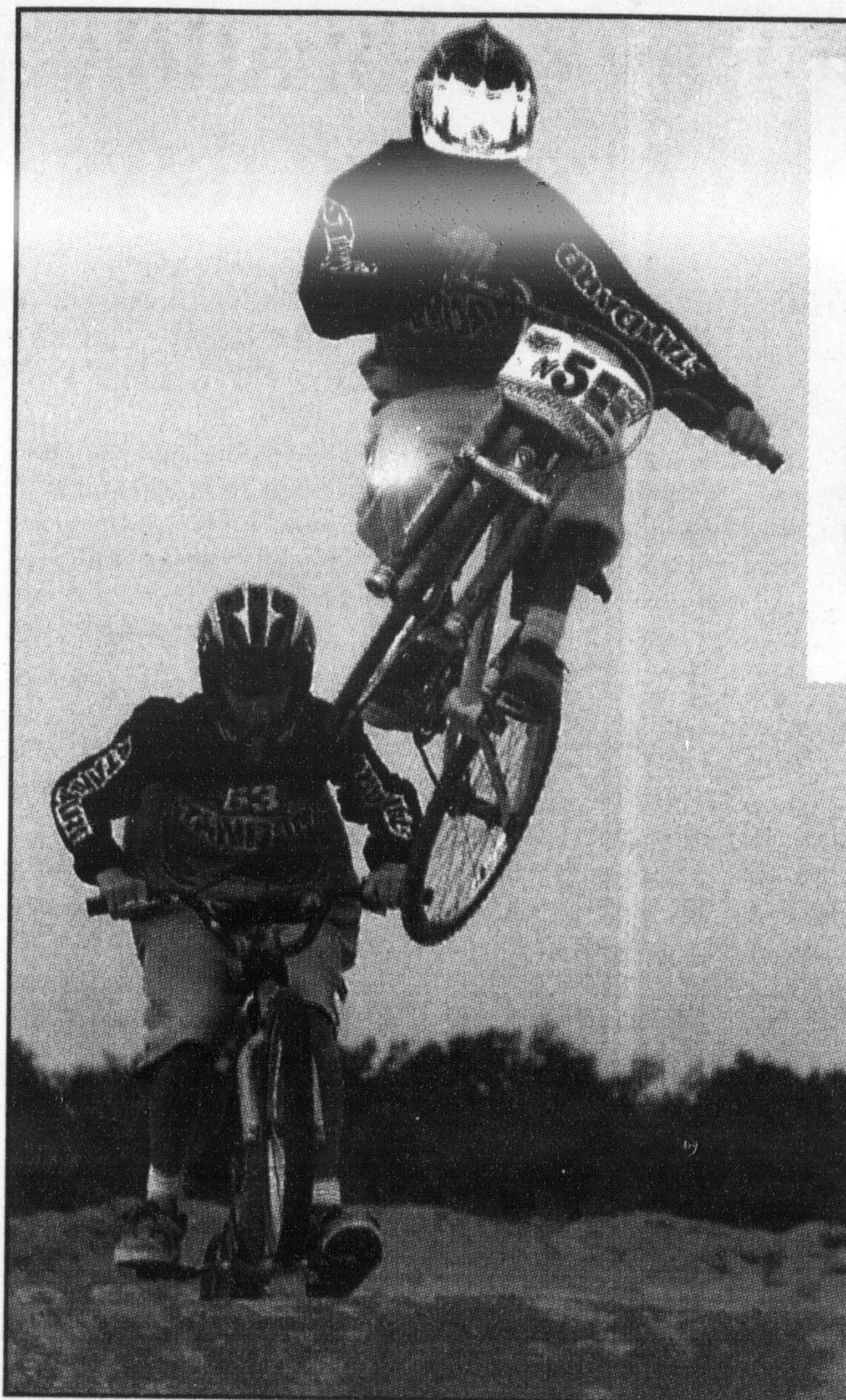
Park Exhibits - learn all about historical Ontario farming practices; livestock exhibit, wagon rides, sheep shearing demos, wool weaving & dyeing exhibits

Saturday Only

- 1st Canadian Border Collie Association "Working" Obedience Trial



Tremaine Road, Milton, ON
www.flyball.com/bandits/milton/milton.htm



Ready to represent

Miltonians Todd Bouwman (left) and Alex Brancier will be among the local BMXers taking part in this weekend's Maple Leaf Nationals at Track 2000, located on Britannia Road. The event runs tomorrow and Sunday.

Photo by GRAHAM PAINE

No turf war exists, says Lafarge rep

No turf war exists in the ready-mix concrete industry.

That message was delivered by a Milton Lafarge representative — who wished to remain anonymous — in response to recent speculation over sabotage against the ready-mix concrete giant.

The notion that a turf war exists was created in the media, he said — adding, "Probably in the minds of reporters (it exists). Those terms were definitely not used by people in the industry."

Those comments come on the heels of reports of re-occurring arson and vandalism at Lafarge and other area ready-mix concrete manufacturers.

The acts have prompted a joint investigation by members of Halton, York and Metro police.

The Milton Lafarge plant was vandalized March 12, when two cement trucks were torched and 12 others were damaged in the attempt to set them ablaze. A conveyer belt was also damaged in the incident, causing the plant to cease operations for the day. Total damages are estimated at \$400,000.

Since the incident, Lafarge has beefed up security around the plant.

Price Correction



562 Hayward Crescent

This gorgeous 4 bedroom family home is an area of family homes and parks, just a quick walk to the Junior schools. Perfect for an in-law / rental set-up, with 2 full bathrooms and a separate entrance. Rich Oak cabinets in the eat-in kitchen, classic French doors into the Living room and a great family room with gas fireplace and walkout to the deck.

Special Preview Showing Saturday 3:00 to 4:30
Sunday Tour of Homes 3:10 to 3:30

Coldwell Banker Home & Family Realty
Chris Newell, Sales Rep. 905-878-4444



**THE CORPORATION OF
THE TOWN OF MILTON**
TTY: 878-1657 878-7211

**MILTON
ON-LINE**
<http://www.town.milton.on.ca>

ROTARY PARK

The Town of Milton is preparing a master plan for Rotary Park to provide a framework for future improvements to the park. The Town has retained park planning consultants to assist with the park planning.

A key component of the project is obtaining public views about Rotary Park. We are asking you to join us in reviewing master plan options and to assist in determining a preferred option.

The open house will be held on:

**Wednesday, June 27, 2001
Hugh Foster Hall
53 Brown Street
5:00 p.m. to 8:45 p.m.**

5:00 - 7:00 Drop in, view display panels;
7:00 - 7:45 Presentation of summary of findings, explanation of design process and presentation of master plan options;
7:45 - 8:30 Comments, questions and recommendations
8:30 - 8:35 Closing remarks

Refreshments will be provided.

We value your input and hope that you can join us.

Got a local story you think others would want to read about? If so, please give us a call at 878-2341, ext. 234.