

Showcase Milton 2001



Executive Directors Message

It is reaffirming when a community can come together to promote it's own ... that is exactly what happened on the June 1, 2 & 3 weekend in Milton. The event was Showcase Milton 2001 and it was a success!

It was a success because of the efforts of the Core Committee who volunteered their time organizing the event!

It was a success because of the team of volunteers who worked the organizing committee!

It was a success because of the exhibitors!

It was a success because of the sponsors at every level!

It was a success because of the attendees from Milton!

It was a success because of the support of the new home buyers who are so looking forward to moving to Milton!

Thanks to everyone for all your support, participation and attendance – we can all be very proud of Milton and its' businesses!



Welcoming Entrance!

Sponsors Make Showcase Milton 2001

A Reality!

Showcase Milton 2001 is a reality thanks to the incredible support from the local business community. We thank all of our generous sponsors for their contribution to making this Show a success.

Our Platinum Sponsors:

- The Milton Canadian Champion
 - Milton Mall
- The Ontario Jockey Club / Woodbine Mohawk Racetracks
 - Mattamy Homes

Our Gold Sponsors:

- Bailey Heating & Cooling

Daycare Services donated by:

- Safe & Sound Children's Centres Inc.

Prize Donors:

- Bruce Hood Travel American Express
 - Taylor Nursery
 - Landscape Garten
- Bergsma's Paint & Wallpaper
- Benjamin Moore Paints

Showcase Friends:

- Milton Toyota
- Gorrud's Auto Group
- Johnson Controls

Admission Tickets Sponsored by:

- First Professional Collision & Paint

Our Silver Sponsors:

- Discount Car & Truck Rentals
 - Kwik Kopy Printing
 - McDonalds Restaurant
- Mercer Hildebrand & Zehr
 - North End Nissan
 - Nutrition House
- Robert (Pie) Insurance
- Roto-Static Carpet & Upholstery Cleaners
 - Royal LePage
 - Subway
 - Tonner Signs
- Toronto Auto Auction

Outdoor Landscaping donated by:

- Taylor Nursery & Landscape Garten

Digital Signs donated by:

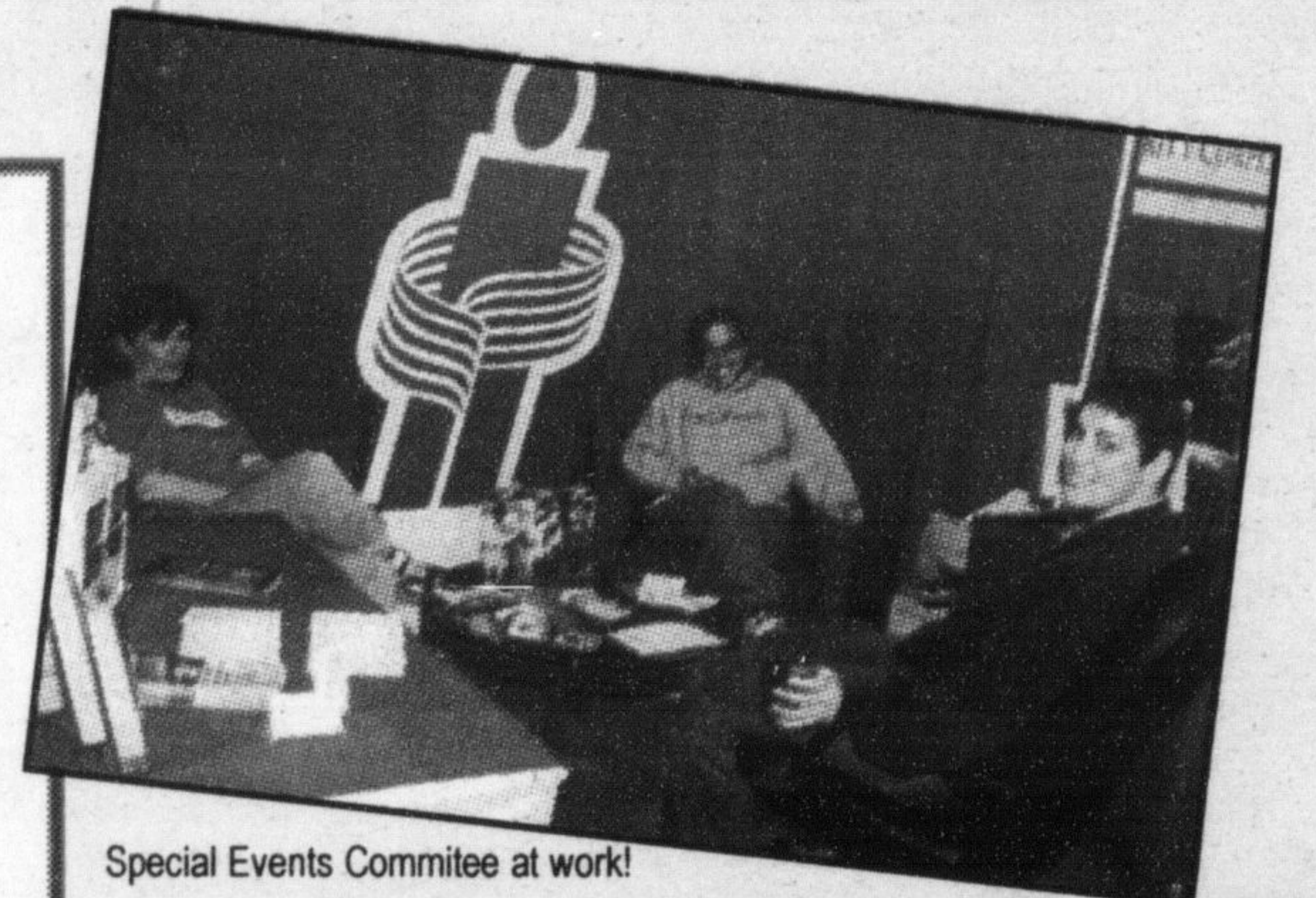
- Vision Innovations

Skatepark Demonstrations coordinated by:

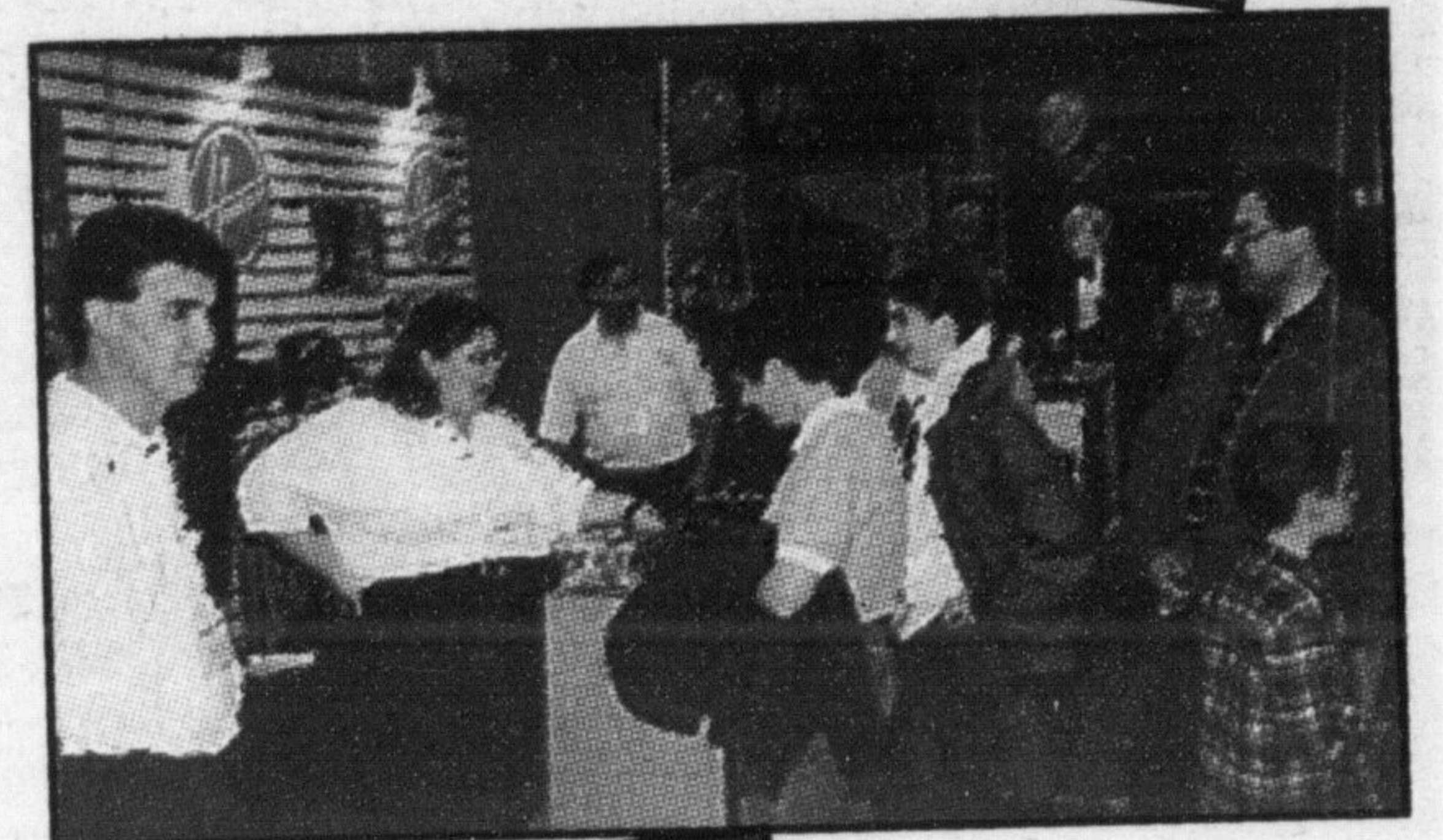
- Spokes & Slopes
- Boardtopia

Wine for the Exhibitor's Wine & Cheese Reception generously donated by:

- Scotch Block Country Winery



Special Events Committee at work!

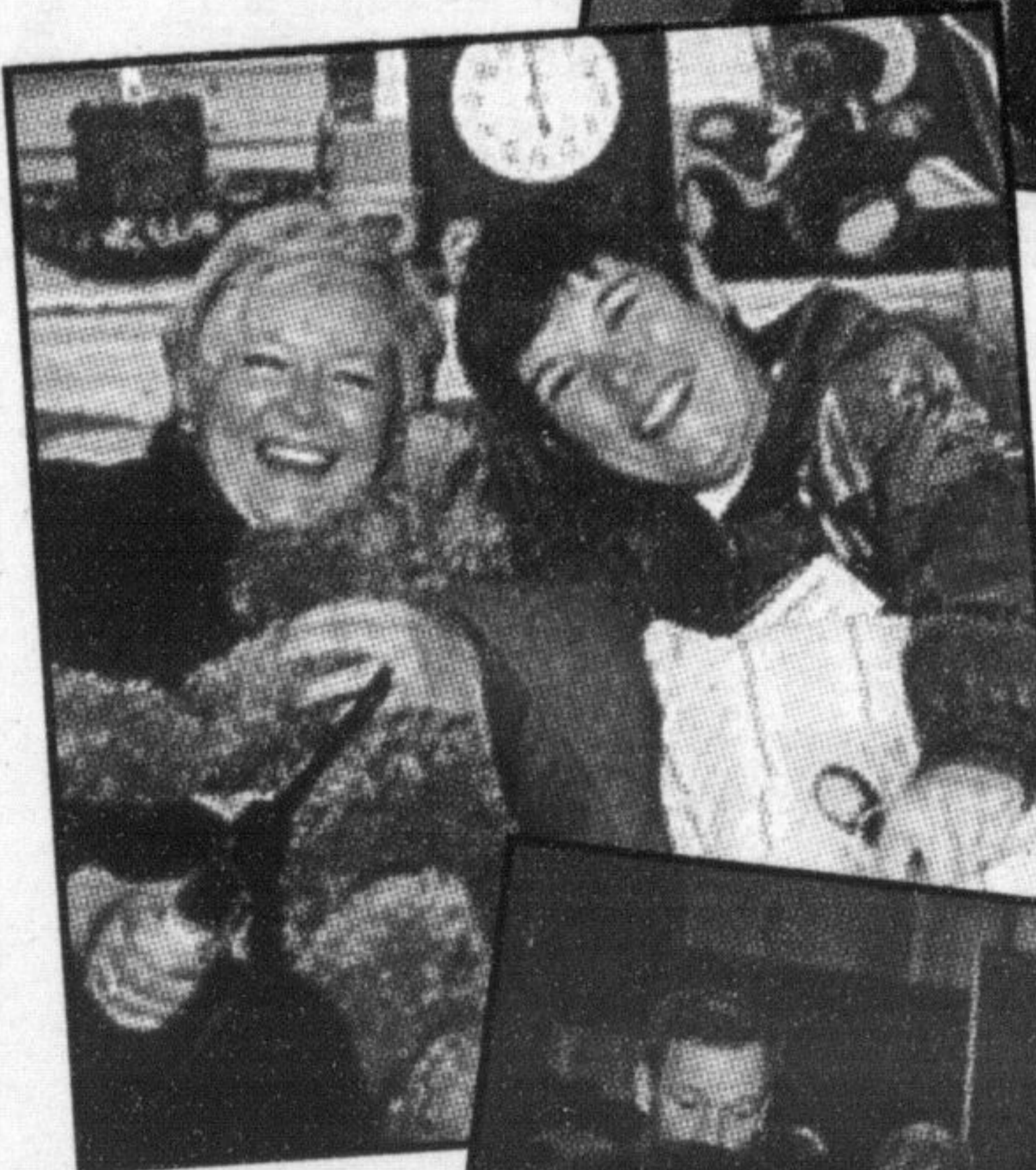


BR(L-R): Darryl Campbell, Jeff Bergsma, James Krane, Alan McDonald, Melissa DeBrouwer, Becky Tonner.

FR(R-L): Lindsay Dyck, Sandy Martin, Karen Scott, Dawn Case, Bill Mercer, Bob McDonald, Peter McCuaig.



Chamber President Bill Mercer, Regional Chairman Joyce Savoline and Mayor Gord Krantz cut the ribbon!



Sandy Martin and Carol McDonald have a bit of fun with a friendly bear!



Showcase Milton 2001 Chairman Jamie Krane presents Lindsay Dyck, Show Co-ordinator, a dozen roses!



Wine & Cheese Reception

