

# MONTHLY NEWSLETTER

251 Main St. E., Milton L9T 1P1 878-0581

For up-to-date information highlighting both the Milton and Escarpment Country regions, we invite you to visit our Web-sites:

[www.chamber.milton.on.ca](http://www.chamber.milton.on.ca) [www.escarpmentcountry.on.ca](http://www.escarpmentcountry.on.ca)

## New Chamber Members

We welcome the following businesses as new Chamber members, and encourage their participation in the various Chamber events and/or Chamber committees.

**A Designer's Touch**  
Contact: Trish & Tony Zammit  
724 Main Street E  
MILTON, ON L9T 3L7  
Phone: 905-878-1180  
[adesignertouch@sympatico.ca](mailto:adesignertouch@sympatico.ca)

**Animal Hospital of Milton**  
Contact: Ross Dawson  
385 Main Street East  
MILTON, ON L9T 1P7  
Phone: 905-878-8853  
Fax: 905-878-2345  
[rossdaw@golden.net](mailto:rossdaw@golden.net)

**bizsmart / CIBC**  
Contact: Mitra Farzani, Business Associate  
370 Stone Road West  
GUELPH, ON N1G 4V9  
Phone: 519-763-4695  
Fax: 519-763-3438  
[mitra.farzani@bizsmart.com](mailto:mitra.farzani@bizsmart.com)  
[www.bizsmart.com](http://www.bizsmart.com)

**Boss Roofing**  
Contact: David Fuller, Owner  
220 Riverplace Crescent  
MILTON, ON L9T 1W5  
905-878-0308  
Residential re-roofing and repairs with an emphasis on forthright honesty sales and service.

**Doctor Steam Clean (1177091 Ontario Ltd)**  
Contact: Brian Ventry, Owner/Operator  
32 Rexway Drive  
GEORGETOWN, ON L7G 1P8  
Phone: 905-877-1964  
Fax: 905-878-5361

**Jayco Maintenance**  
Contact: Jim Bray, Owner  
308 Woodlawn Crescent  
MILTON, ON L9T 4T5  
Phone: 905-878-6478  
Fax: 905-878-2611

**K & S Travel**  
Contact: Ken & Shirley Baskett, Owners  
550 Ontario Street South - Unit 8  
MILTON, ON L9T 5E4  
Phone: 905-821-4750  
Fax: 905-821-4752

**Literacy North Halton**  
Contact: Dymna Dewar, Executive Director  
P.O. Box 218  
GEORGETOWN, ON L7G 4Y5  
Phone: 905-873-2200  
Fax: 905-873-2210

**Minolta Business Equipment Canada**  
Contact: Curt Werner, Commercial Representative  
369 Britannia Road E  
MISSISSAUGA, ON L4Z 2H5  
Phone: 905-890-5171 ext 274  
Fax: 905-890-2514  
[cwerner@scs.mincan.ca](mailto:cwerner@scs.mincan.ca)  
[www.mincan.ca](http://www.mincan.ca)

**Scott's Car Care (SMH Enterprises)**  
Contact: Scott Maclean, Howard  
88 Ontario Street North, Unit #3  
MILTON, ON L9T 2T1  
Phone: 905-875-3367  
Automotive services and detailing

**Time Zone / The Travel Bureau**  
Contact: Maria Reis  
75 Nipissing Road  
MILTON, ON L9T 1R3  
Phone: 905-693-9393  
Fax: 905-693-8800  
[maria@travel.com](mailto:maria@travel.com)

**Toronto Auto Auctions**  
Contact: Brad Hart, General Manager  
8277 Lawson Road  
MILTON, ON L9T 5C7  
Phone: 905-275-3000  
Fax: 905-875-2910  
[brad.hart@cox.com](mailto:brad.hart@cox.com)  
[www.manheim.com](http://www.manheim.com)

## Escarpment Country Membership Renewals

La Toscana Ristorante  
La Vieille Auberge  
Landscape Ontario  
Swiss Chalet

## Chamber Membership Renewals

B.J.S. Janitorial Services	Maitland Spencer Engineering
Bomar Bargain Barn	Milton Therapeutic Massage Clinic
Cam Corp.	Primary Electrical Supply
Carriage Hill Interiors & Associates Ltd.	R. M. Contracting Ltd.
Central Truck & Trailer	SKD Company
Charles Havill	Terry Rowley Mechanical Inc.
Compaction Plus	
Dehoog Piano Movers	
DM Air Inc.	
Gus Mowbray	
Lasco Electric	
Louis D. Nadalin Investments	
M G M Consulting Inc.	



Your Printing Solution... and more!

100 Nipissing Road, Unit 9  
Milton, Ontario L9T 5B2  
(Behind Milton Mall)

- Graphic Design & Typesetting
- Multi-Colour Printing
- Finishing & Bindery
- High Speed Copier
- Full Colour Laser Copier
- Wide Format Copier

Tel: 876-4647  
Fax: 876-1100

FREE PICKUP & DELIVERY

## ROBERT (PIE) LEE, B.SC. LIFE INSURANCE AGENCY

Life - Disability - Annuities - RRFs - LIFs  
RRSPs - Mutual Funds (Lic. with M.S.I.L.)  
Celebrating "26" Years in Business

Bob Lee  
robertlee@aztec-net.com



Kim Mitchell  
kim2@castle.on.ca

245 Commercial St.  
Office 878-5786

Milton Ontario. L9T 2J3  
Fax 878-3692

We work to your terms, your comfort

## FIRST PROFESSIONAL Collision & Paint INC.

MILTON'S FULL SERVICE COLLISION CENTRE  
Call Steve Boers

706 Main Street, East  
Milton, ON

(905) 876-1116

We will exceed your expectations

OPEN SATURDAYS 8:00am - 12 noon  
For after hours appointment call (905) 876-8787

## The Canadian Champion

191 Main St. E.  
878-2341



## Miltowne Insurance Agency Ltd.

P.O. Box 372, Milton, ON L9T 4Y9

Exclusive agent for the Chamber of Commerce Plan

**DENTAL, HEALTH AND DISABILITY INSURANCE**

Available for as few as one person at Group Rates  
Featuring - "Assure" Prescription Card  
Group Life & Health specialist

Roger Lauzon 878-7217

Fax 878-7210

## Networking their successes and upcoming new season.....

Escarpment Country partners gathered for their annual 'Spring Kick-Off' hosted by the Country Heritage Park, Tremaine Road. A great evening filled with much enthusiasm and enjoyment! Special thanks to hosts, Reg Cressman, General Manager; and Darlene Roach, Administration.



✓ L to R - Reg Cressman, Denise Reichstein, Laura Hughes, Robert Goderre, Darlene Roach

## Sharing Expertise.....

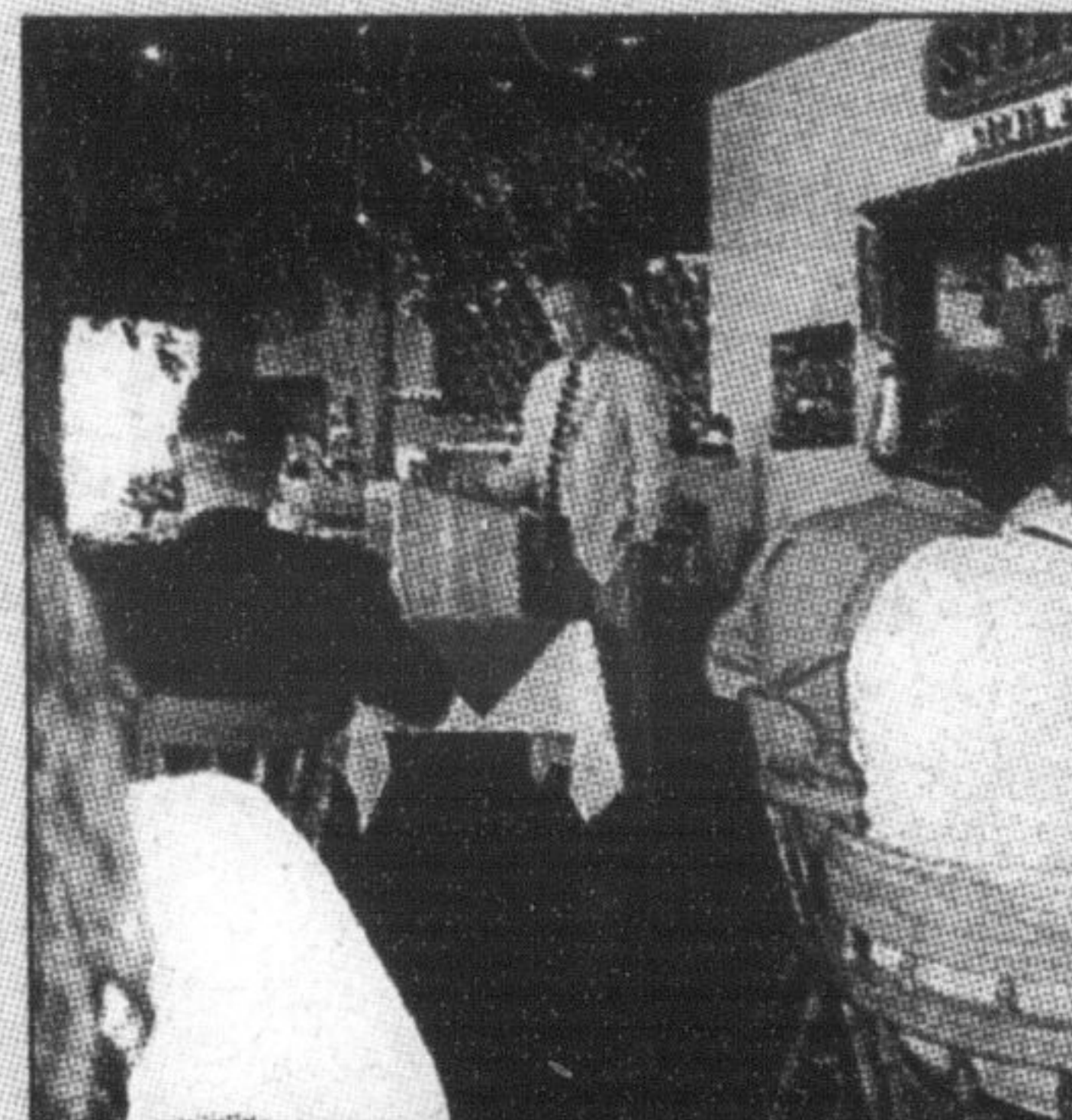
Business professionals, Dawn Case, Empty Nest Home & Personal Services; and Bob McDonald, McMarketing Inc.; provided a very informative and educational overview of the 'Do's and Don'ts of Tradeshows' in preparation of the upcoming Showcase Milton 2001. Participants were very pleased with this great session.

## Celebrating 30 Years....

Tuesday, May 22<sup>nd</sup> Business After Hours was hosted by Milton Heights Campground, Tremaine Road in celebration of their 30<sup>th</sup> Anniversary in providing a home away from home for campers and RV'ers alike. Thank you to Jean Caserin and staff for a very delightful evening.

## Thank You

Thank you to MPP Ted Chudleigh, guest speaker at our May 3<sup>rd</sup> Business Before Hours at the Steak-Yard Restaurant. Mr. Chudleigh provided highlights on the throne speech, pre-budget, and future direction. A question and answer period followed.



## Mission Statement:

To provide leadership in promoting the well being of the businesses of Milton.

## JOHNSON CONTROLS

### Johnson Controls Ltd.

Automotive Systems Group

8205 Parkhill Drive  
High Point Business Park East  
Milton

(905) 875-2128

## Paying too Much for Insurance?

MILTON CHAMBER OF COMMERCE MEMBERS AND THEIR EMPLOYEES

Save up to 55% on  
**Auto and Home Insurance!**  
24 Hr Claims Assistance  
Policy service 8am to 7pm

★ Aaron MacFarlane ★ Ken Armstrong ★ Doug Peddie

Phone 876-4607  
or Fax 876-1001

ROYAL & SUNALLIANCE

Forward thinking since 1710™