

CHEVY TRUCKS ROCK THE NATION

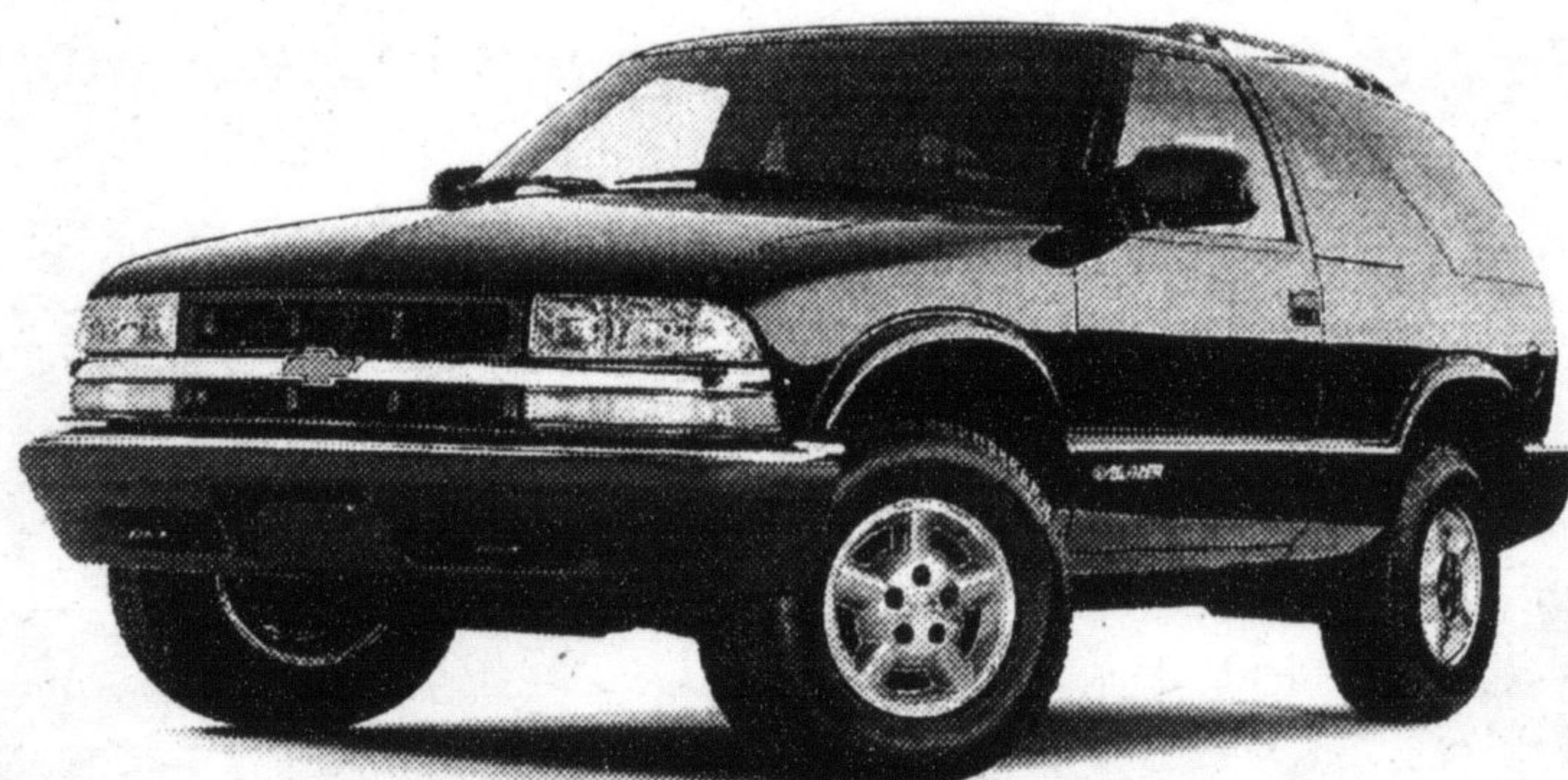
2001 CHEVY SILVERADO THUNDER EDITION EXTENDED CAB:

LIMITED EDITION BLUE OR SILVER PAINT AVAILABLE.
270-HP Vortec 4800 V8 Engine • Automatic Transmission
with Overdrive and Tow/Haul Mode • Air Conditioning with
Interior Air Filtration System • 4-Wheel Disc & 4-Wheel
Anti-Lock Braking System • 40/20/40 Split Front Seat with
Custom Cloth Trim • Full Instrumentation including:
Tachometer, Engine Hour Meter & Driver Message Centre

36 MONTH SMARTLEASE \$368* PER MONTH/\$2,630 DOWN PAYMENT PLUS FREIGHT AND SECURITY DEPOSIT	OR PURCHASE FINANCING 3.9%† UP TO 48 MONTHS	OR CASH PURCHASE PRICE \$26,598‡ EXCLUDES FREIGHT
---	--	--



NO-CHARGE AUTOMATIC TRANSMISSION



2001 CHEVY BLAZER 2-DOOR 4x4:

Vortec 4300 V6 190-HP Engine • 4-Speed Automatic Transmission • Air
Conditioning • Power Door Locks/Windows/Mirrors • 4-Wheel Anti-Lock Braking
System • Tilt-Wheel & Cruise Control • Next Generation Driver and Front
Passenger Air Bags

48 MONTH SMARTLEASE \$308* PER MONTH/\$4,580 DOWN PAYMENT PLUS FREIGHT AND SECURITY DEPOSIT	OR PURCHASE FINANCING 1.9%† UP TO 60 MONTHS	OR CASH PURCHASE PRICE \$29,998‡ EXCLUDES FREIGHT
---	--	--



2001 CHEVY TRACKER HARDTOP:

Shift-on-the-Fly 4WD System • Full-Ladder Frame Construction • 5-Passenger
Seating • New 5-Link Rear Suspension • 2.0 Litre 4-Cylinder DOHC 127-HP
Engine • CD Stereo • Tinted Glass • Air Conditioning

48 MONTH SMARTLEASE \$248* PER MONTH/\$3,280 DOWN PAYMENT PLUS FREIGHT AND SECURITY DEPOSIT	OR PURCHASE FINANCING 1.9%† UP TO 48 MONTHS	OR CASH PURCHASE PRICE \$21,688‡ EXCLUDES FREIGHT
---	--	--

**OR, FOR ONLY \$40[†] MORE A MONTH, GET A TRACKER WITH THESE ADDITIONAL FEATURES:
AUTOMATIC TRANSMISSION • POWER DOOR LOCKS/WINDOWS/MIRRORS • REMOTE KEYLESS ENTRY • CRUISE CONTROL**

FOR A LIMITED TIME ONLY AT YOUR LOCAL CHEVROLET • OLDSMOBILE DEALER

We'd like you to know more: Come visit us at your local dealer, on our website at www.gmcanada.com or call us at 1-800-GM-DRIVE. *Based on a 6.4%/2.9%/2.9% annual lease rate, 36/48/48 month term for Silverado 2WD Ext. Cab R7L/Blazer 2-Door R7A/Tracker Hardtop R7Z. \$0.12/km charge over 60,000/80,000 km for 36/48 months. Option to purchase at lease end is \$15,885/\$12,832/\$9,131 (Silverado 2WD Ext. Cab R7L/Blazer 2-Door R7A/Tracker Hardtop R7Z) plus applicable taxes. Licence, insurance, PPSA, administration fees and taxes not included. Other lease options available. †Financing on approved GMAC credit only. Example: \$10,000 at 3.9%/1.9%/1.9% APR, the monthly payment is \$225.34/\$174.84/\$216.52 for 48/60/48 months. Cost of borrowing is \$816.32/\$490.40/\$392.96. Total obligation is \$10,816.32/\$10,490.40/\$10,392.96. Down payment and/or trade may be required. Monthly payment and cost of borrowing will vary depending on amount borrowed and down payment/trade. ‡The SMARTLEASE monthly payment and the GMAC purchase finance rate are not available with and are not calculated on the "Cash Purchase" price as shown. The difference between the price for the SMARTLEASE/GMAC Purchase Finance offer and the "Cash Purchase" offer is deemed under provincial disclosure laws to be a cost of borrowing, whether or not the same represents actual interest and is required to be expressed as an annual percentage rate of 6.24%/4.51%/4.16% (Silverado 2WD Ext. Cab R7L/Blazer 2-Door R7A/Tracker Hardtop R7Z). *†Offers apply to new or demonstrator 2001 models of Silverado 2WD Ext. Cab R7L/Blazer 2-Door R7A/Tracker Hardtop R7Z equipped as described. Offers apply to qualified retail customers in the Ontario Chevrolet Oldsmobile Dealer Marketing Association area only (excluding Northwestern Ontario). Dealer order or trade may be necessary. Limited time offer that may not be combined with other offers. Lease and purchase offers do not include freight (\$990/\$835/\$810), licence, insurance and taxes. Dealers are free to set individual prices. See your dealer for conditions or details. †Based on \$288/month SMARTLEASE with \$3,280 down payment (Tracker R7R).



CHEVROLET
Oldsmobile

