

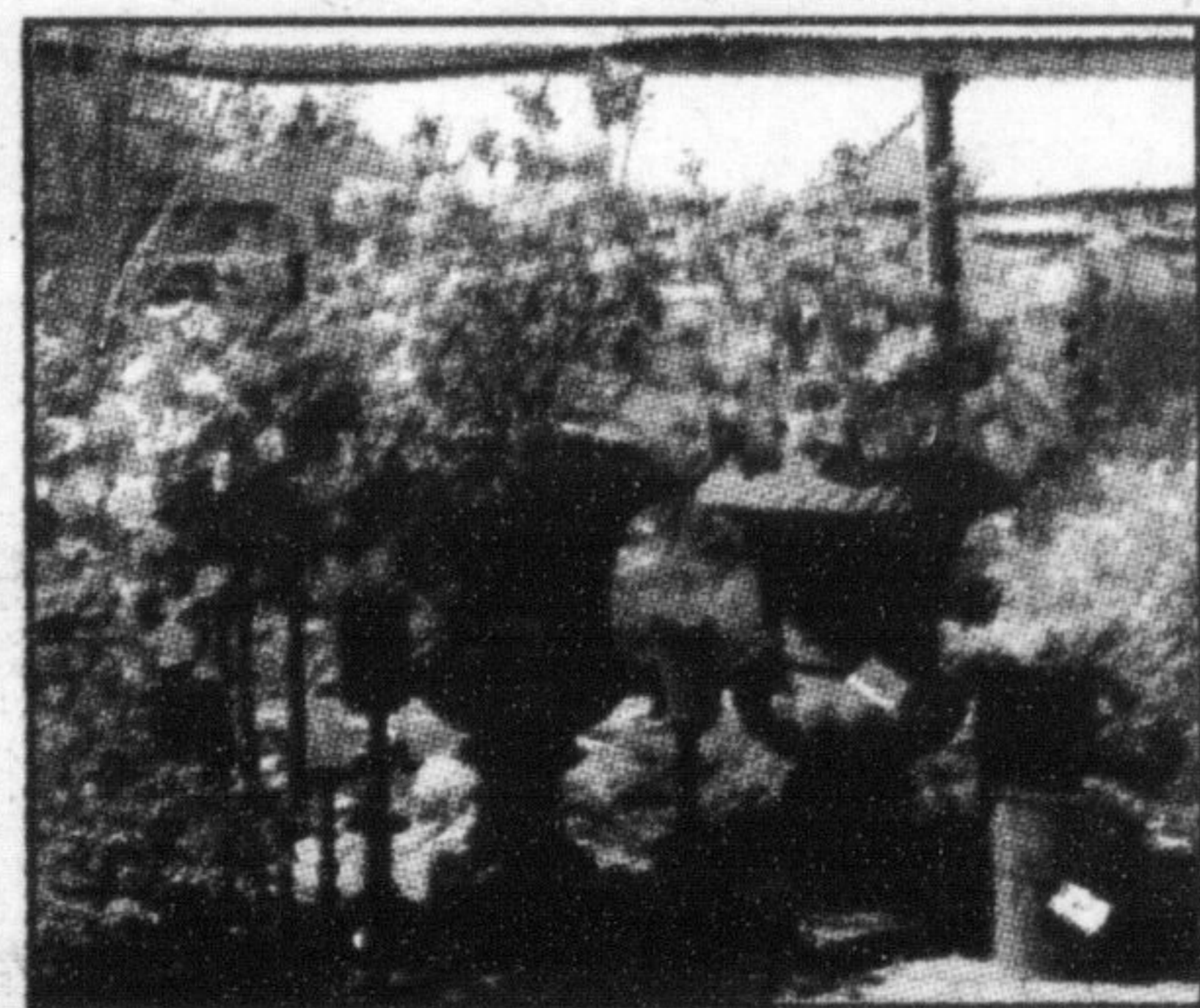
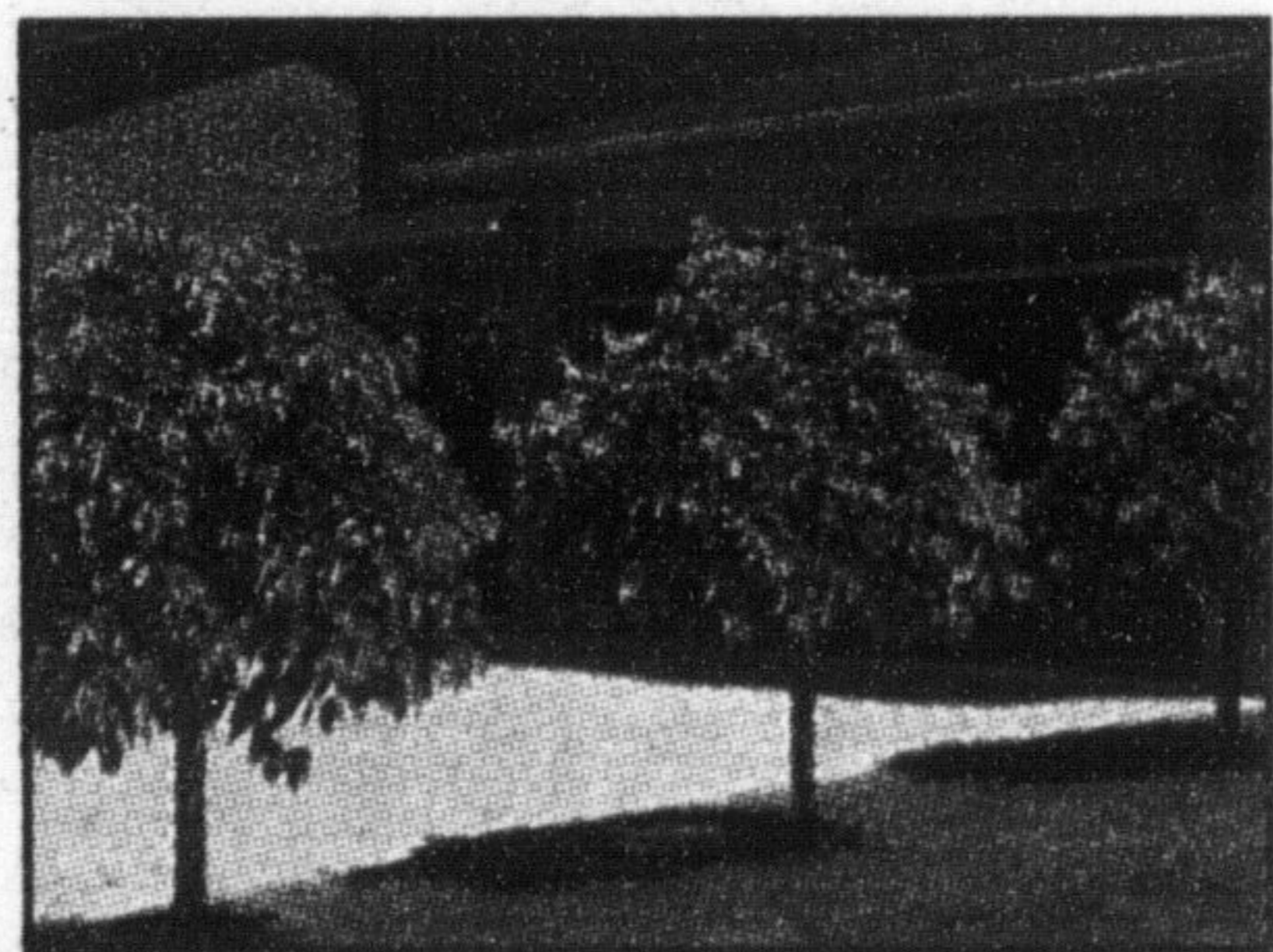
# HOME and Garden

## Taylor Nursery



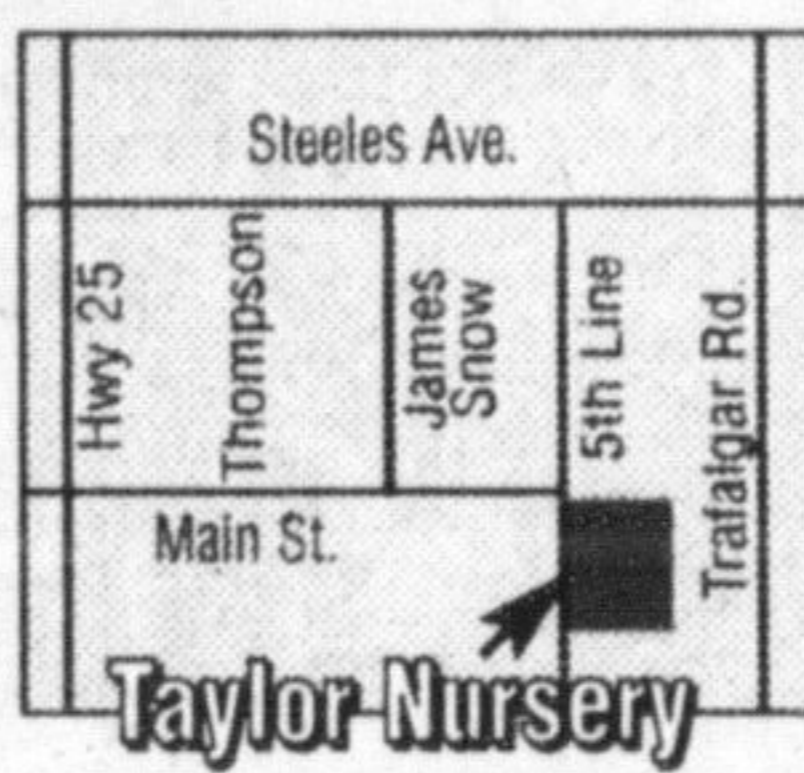
**FOR ALL YOUR GARDENING NEEDS!**

- \* Trees \* Shrubs \* Annuals \* Perennials \* Water Gardening \* Statuary \*
- \* Black Loam \* Aggregates \* Garden Soil \* Baskets \*



**7429 5th Line**  
East End of Main St., Milton  
**(905) 876-4100**  
**OPEN MONDAY MAY 21<sup>ST</sup>**

**30% OFF**  
1, 2, 3 Gallon  
Perennials

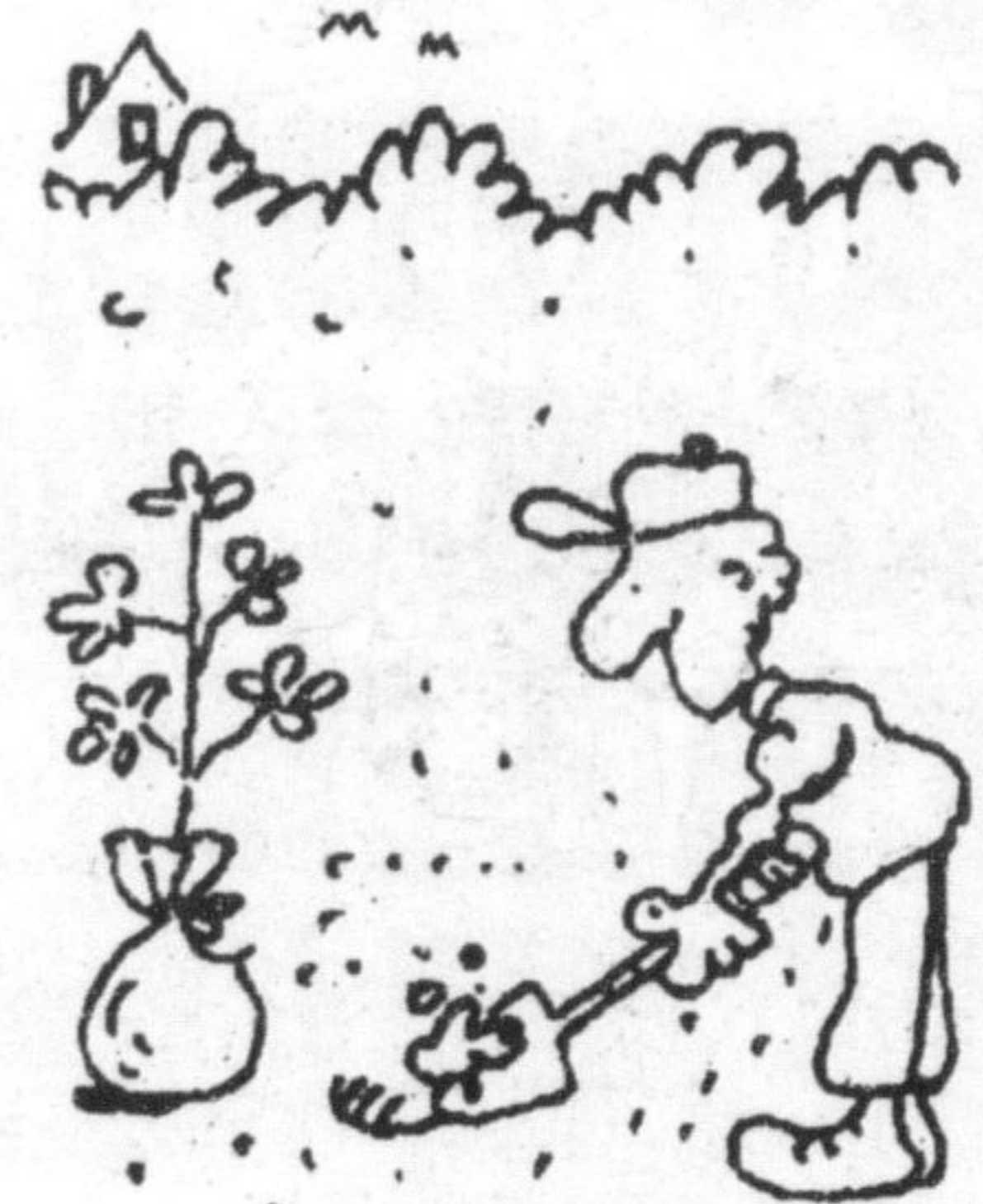


## AR Down Landscaping Consultant & Lawn Maintenance

- Small tree & shrub pruning, fertilizing & mulching
  - Lawn Maintenance
  - Fall & Spring clean-ups
- (905) 864-9113**

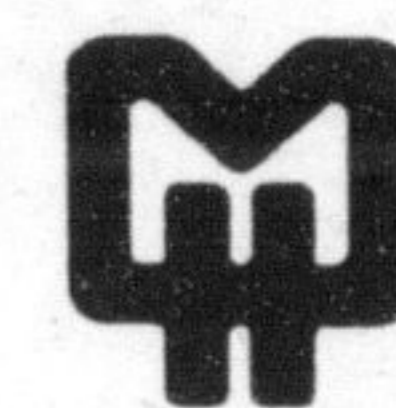
## CALL BEFORE YOU DIG!

Many services may be supplied to your home underground - hydro, gas, telephone, cable TV, etc. If you are planning any gardening, or other property renovations requiring excavating or digging, call us for a 'locate'. It only takes a few minutes but could prevent a serious electrical accident!



WEDNESDAYS AND THURSDAYS ARE 'LOCATE' DAYS

**Milton Hydro**  
**(905) 876-4611**



# DEERE SEASON 2001

**CHOOSING  
YOUR  
MOWER**



**1/4 acre or less**  
Push mower or self-propelled walk-behind mower.



**1/2 acre to 1 acre**  
Rear-engine riding mower or lawn tractor with a cutting width up to 38 inches.



**3 or more acres**  
Yard tractor, lawn tractor, or lawn and garden tractor with cutting widths of 48 inches or more.

### JS60 STEEL-DECK MOWER

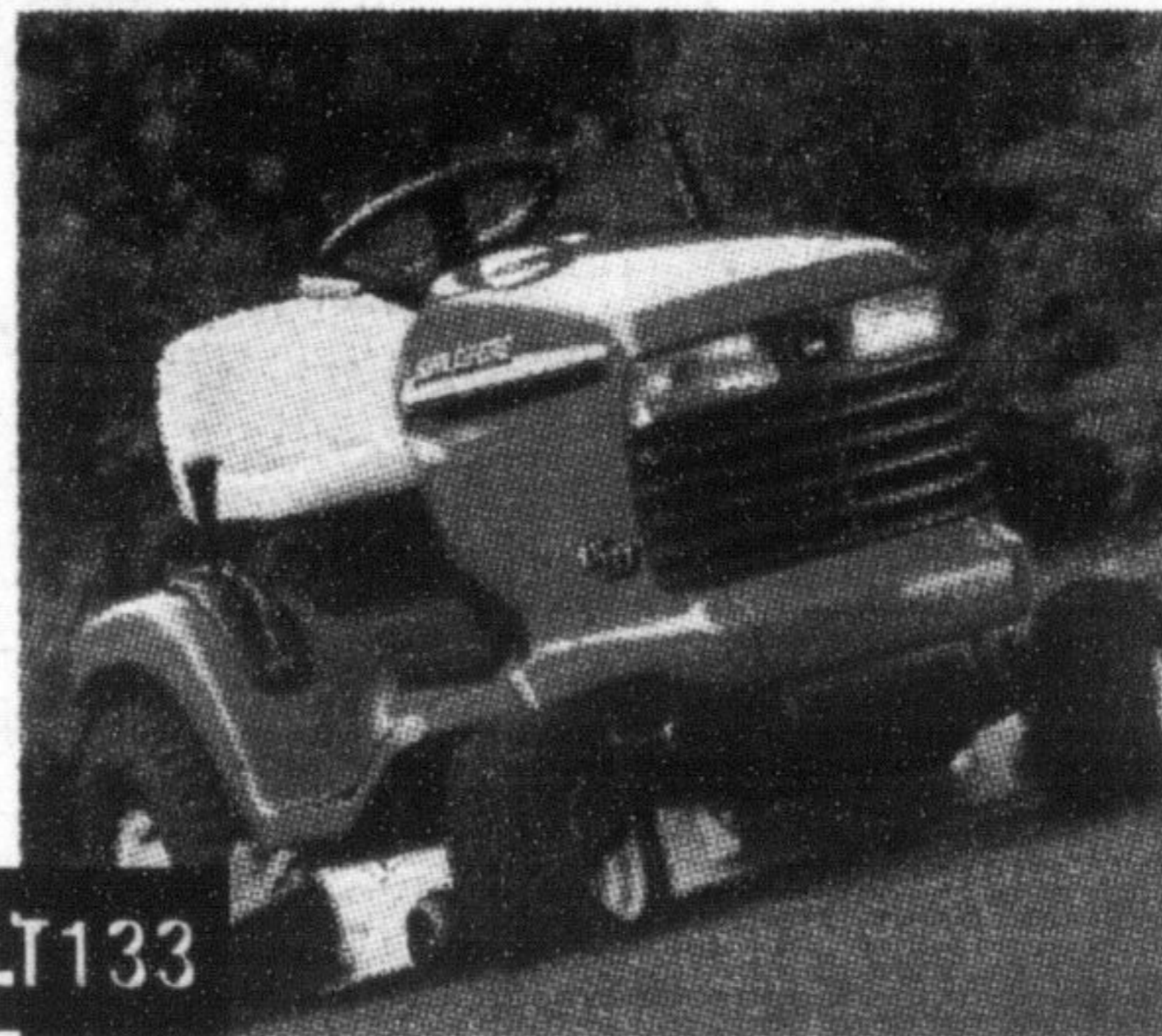
- Unique dome-shaped design with smooth deck underside virtually eliminates unsightly clumps when mulching in tall, damp grass.
- Easily convert mower with 2.5 bushel bagger, side-discharge chute or mulch cover attachment; no tools needed
- Strong, 21 inch, 13-gauge deck is thicker than that of most competitors



**ONLY \$429\***

### LT LAWN TRACTOR

- Overhead-valve engine with full-pressure lubrication and standard oil filter for long life
- Sit-and-adjust seat with 9 inches of forward and back travel
- More than 9 different attachments available



**ONLY \$2,799\* \$59/month**

### GT LAWN & GARDEN TRACTORS

- Standard cruise control for mowing in open spaces
- Quik-Tatch implement mounting system lets you change attachments in seconds; no tools needed
- More than 22 different attachments available



**ONLY \$6,799\* \$159/month**

GT235 With 48C Mower Deck

**GET HOOKED  
UP TODAY**

Turn your tractor into a full-time partner with John Deere attachments.

**48 INCH  
FRONT BLADE**



**#10 UTILITY  
CART**



**30 INCH  
MECHANICAL TILLER**



**7-BUSHEL  
REAR BAGGER**



GROUNDS CARE  
**HALTON**  
EQUIPMENT

**NOTHING RUNS LIKE A DEERE®**

**1589 Steeles Ave. E., Milton (905) 878-2121**  
Sales, Service, Parts and Rentals



[www.JohnDeere.com](http://www.JohnDeere.com) \*See Dealer for details.

