

One, two, FREE!



Purchase two of these services and receive the 3rd free*

- Tanning
- Manicure
- Hand Treatment
- Set of Nails
- Fill
- Pedicure
- Facial
- Back Facial
- Back Massage
- Full Body Massage
- Makeup
- Makeup lesson (\$15 product free)
- Ear Candling
- Eyelash Tinting
- Eyebrow Tinting
- Sugaring (Hair Removal)
- Cut & Style
- Formal Style
- Lowlites
- Colour
- Hilites
- Streaks
- Foil Hilites
- Perms
- Special wraps for longer hair

OFFER EXPIRES MAY 31/01

*FREE SERVICE MUST BE FOR EQUAL OR LESSER VALUE.

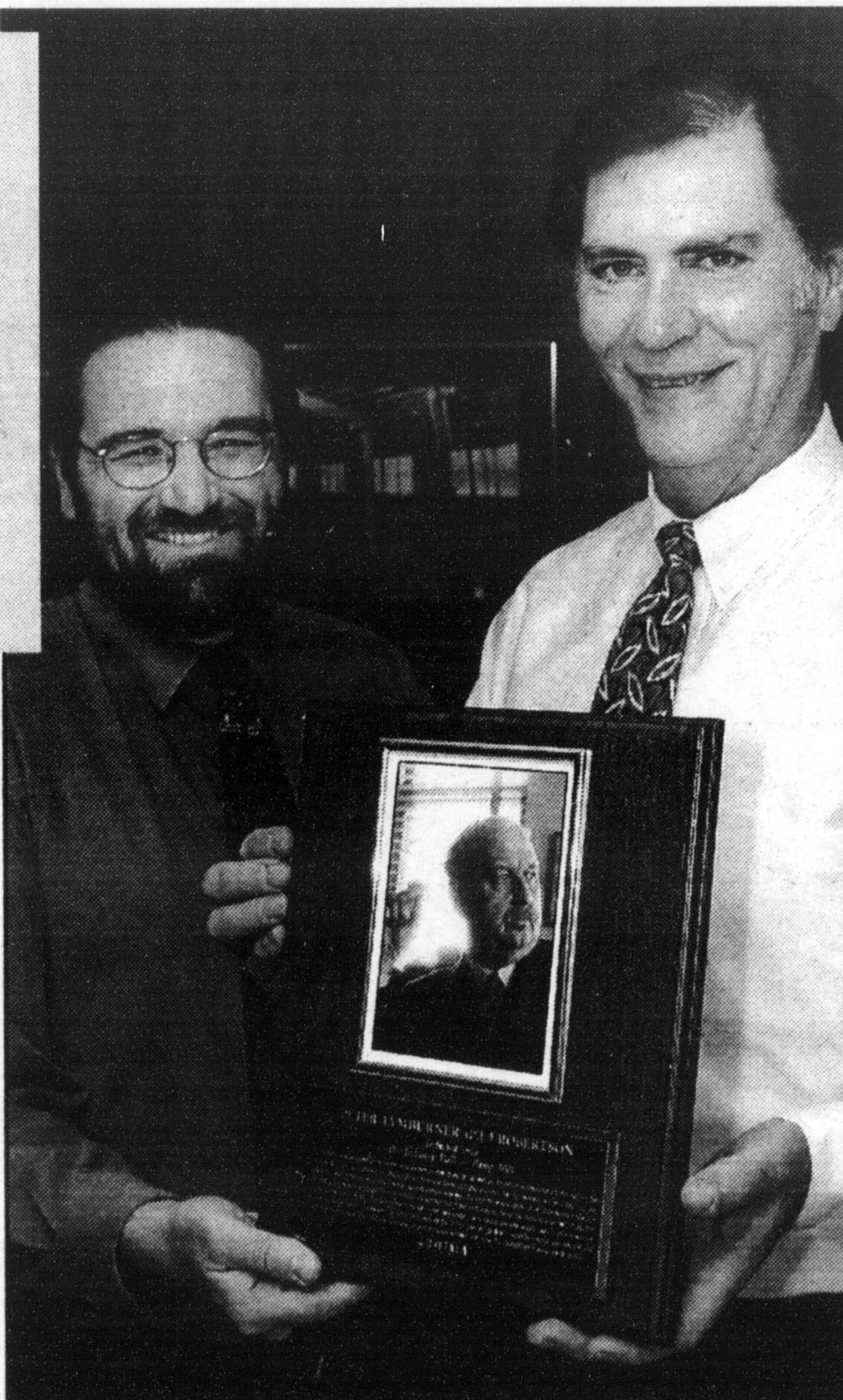


84 Main St. E.
905-8763761

Screwdriver pioneer inducted into hardware industry's hall of fame

Greg Hill (left) and Mike Turner of Robertson Inc. hold the plaque of company founder the late P.L. Robertson, who was recently inducted into the Canadian Hardware and Housewares Manufacturing Association Industry Hall of Fame. Mr. Robertson opened his screw manufacturing business on Bronte Street in 1908.

Photo by GRAHAM PAINE



By FANNIE SUNSHINE

The Champion

Fifty-one years after his death, Peter Lymburner (P.L.) Robertson was inducted into the Canadian Hardware and Housewares Manufacturers Association Industry Hall of Fame last month.

Mr. Robertson, the founder of Robertson Inc., opened his screw manufacturing business on Bronte Street in 1908.

The company has remained there ever since.

"The company has always been instrumental in gaining local and national recognition," said Mike Turner, sales correspondent for Robertson Inc. "We found out early in the year that P.L. Robertson was going to be inducted into the Hall of Fame. It was a great pleasure to find out Mr. Robertson was to be inducted — it was always one of our goals."

One hundred and fifty people attended the induction ceremony, which took place at the annual governor's meeting of the manufacturers association.

"We received an engraved plaque," Mr. Turner said. "Mr. Robertson was one of two inductees at the ceremony."

He noted numerous employees that work at the plant are second and third-generation employees.

"We hope to continue to be here for another 100 years," he said.

Until 1908, screwdriver systems were limited to the slotted recess head and the square and hexagonal heads for large screws and bolts.

That year, Mr. Robertson began making square recess heads for large screws and bolts.

While the Robertson company had been formed in Hamilton, Milton was chosen for the manufacturing location.

That was partly the result of incentives offered by town council. Milton council provided the Robertson company with a location on a railway siding, a roadway to the premises, reduced water rates and a sewage disposal system.

Nominations accepted for five awards

Do you know an exceptional woman who should be recognized for her business accomplishments?

Successful nominees will be honoured at the third annual Pinnacle Awards for Business Women of Distinction at the Erin Mills Town Centre in Mississauga.

Award will be presented in each of the following five categories: Most Successful Start-Up, Education, Training and Development, Innovation, Community and Volunteer Contribution and Business Success.

Employees and residents in Halton and Peel are encouraged to nominate successful business women in their communities.

Judges from business, government and community organizations within the regions will select winners in each category.

Nomination forms, including a biography and a two-page description of the candidate's qualifications for awards, will be accepted until June 30.

Nomination forms will be distributed upon request by calling (416) 924-4442, ext. 237.

Marion E. Howard B.A., LL.B.
Barrister & Solicitor

Practice Restricted to
Income Tax,
Corporate Law and
Estate Planning

Tax Consultant to Professionals

Box 406
Campbellville, Ontario L0P 1B0

Call 905-878-2989

Email: marion.howard@sympatico.ca

Fax: 905-876-0495



1991 HONDA CIVIC HATCHBACK

Gas miser. Very reliable. Grey/grey interior. 5 spd. excellent cond. 138,000 km. PS, PB, AM/FM cass.

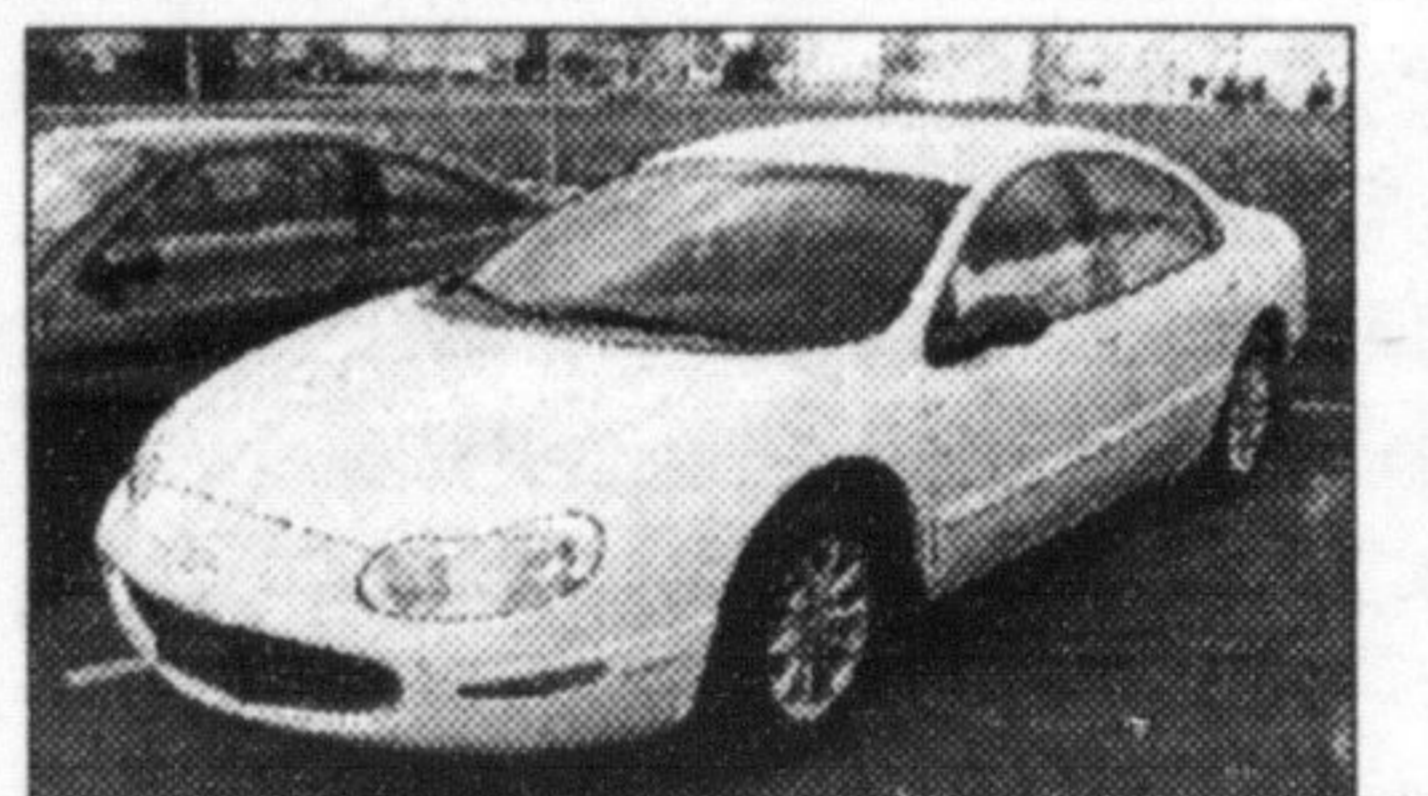
SALE PRICE **\$5,788**



1997 PONTIAC GRAND PRIX GTP

2 dr., 3.8L super charged engine. Red/tan leather int. Chrome alloy wheels, heads up display, p.seat, tilt, cruise, keyless entry - loaded. 100,000 km.

SALE PRICE **\$15,998**



1998 CHRYSLER CONCORDE LX

Auto, white/grey cloth, 70,000 km. PW, PL, tilt, cruise, keyless entry, p. seat, climate control, ABS.

SALE PRICE **\$15,998**



1996 VOLVO 850 TURBO WGN.

Black/tan leather, excellent cond, service history. Summer & winter wheels, p. sunroof, heated seats, dual zone climate control, loaded.

SALE PRICE **\$21,998**



1999 PONTIAC TRANSPORT

V6, silver/grey inter., 3 dr, 6 pass, PS, PB, PL, PM, tilt, cruise, A/C, privacy tint, ABS. 47,000 km.

SALE PRICE **\$16,998**



1999 CHEV VENTURE

3.4L V6, desert mist/beige cloth, 4 dr, power sliding door, PW, PL, tilt, cruise, A/C, privacy tint, and more. 101,000 km.

SALE PRICE **\$15,998**



1998 DODGE GRAND CARAVAN

4 dr, 3.0L V6, 91,000 km, privacy tint, roof rack, PS, PB, AM/FM cass, ABS.

SALE PRICE **\$12,998**



1998 ACURA 1.6 EL

Premium Auto, Top of the Line! Black/grey leather, p. sun roof, heated seats, alloy wheels, spoiler, PW, PL, tilt, cruise, loaded, CD

SALE PRICE **\$15,998**



1997 BUICK CENTURY CUSTOM

3.1L V6, silver/grey cloth interior, 97,000 km, PW, PL, tilt, cruise, CD, p. seat, alloy wheels, and much more.

SALE PRICE **\$12,998**

SALES, LEASING & FINANCING AVAILABLE

PARKWAY AUTO TRADE

875-4925

www.autotrader.ca/parkwayautotrader

6 MONTH POWERTRAIN WARRANTY INCLUDED IN ALL VEHICLES

8215 LAWSON ROAD, MILTON

