

# THE ULTIMATE GMC TRUCK EVENT

## GET THE TRUCK DEAL OF THE YEAR



**GMC**  
**WRANGLER**  
EDITION

### WITH NO-CHARGE AUTOMATIC TRANSMISSION

#### GMC 2001 SIERRA WRANGLER EDITION

Limited Edition Special Colours Available • 270-HP Vortec 4800 V8 Engine • 4-Speed Automatic Transmission with Overdrive and Tow/Haul Mode • Air Conditioning with Interior Air Filtration System • 4-Wheel Disc & 4-Wheel Anti-Lock Braking System • 40/20/40 Split Front Seat with Custom Cloth Trim • Full Instrumentation including: Tachometer, Engine Hour Meter & Driver Message Centre • Locking Differential

36 MONTH SMARTLEASE

**\$378\***

PER MONTH/\$2,575 DOWN PAYMENT,  
FREIGHT AND SECURITY DEPOSIT REQUIRED

OR PURCHASE FINANCE

**3.9%**

UP TO 48 MONTHS\*

OR CASH PURCHASE PRICE

**\$26,998†**

EXCLUDES FREIGHT



#### GMC 2001 SIERRA REGULAR CAB

270-HP Vortec 4800 V8 Engine • 4-Speed Automatic Transmission with Overdrive and Tow/Haul Mode • Air Conditioning with Interior Air Filtration System • 4-Wheel Disc & 4-Wheel Anti-Lock Braking System • 40/20/40 Split Front Seat with Custom Cloth Trim • Full Instrumentation including: Tachometer, Engine Hour Meter & Driver Message Centre • Locking Differential

36 MONTH SMARTLEASE

**\$308\***

PER MONTH/\$2,530 DOWN PAYMENT,  
FREIGHT AND SECURITY DEPOSIT REQUIRED

OR PURCHASE FINANCE

**3.9%**

UP TO 48 MONTHS\*

OR CASH PURCHASE PRICE

**\$23,498†**

EXCLUDES FREIGHT

#### GMC 2001 SONOMA

4.3 Litre V6 SFI 180-HP Engine • 4-Speed Automatic Transmission • Air Conditioning • AM/FM Stereo with CD Player • 4-Wheel Anti-Lock Braking System • Third Door • Aluminum Wheels • Tilt-Wheel™ & Cruise Control

36 MONTH SMARTLEASE

**\$298\***

PER MONTH/\$2,755 DOWN PAYMENT,  
FREIGHT AND SECURITY DEPOSIT REQUIRED

OR PURCHASE FINANCE

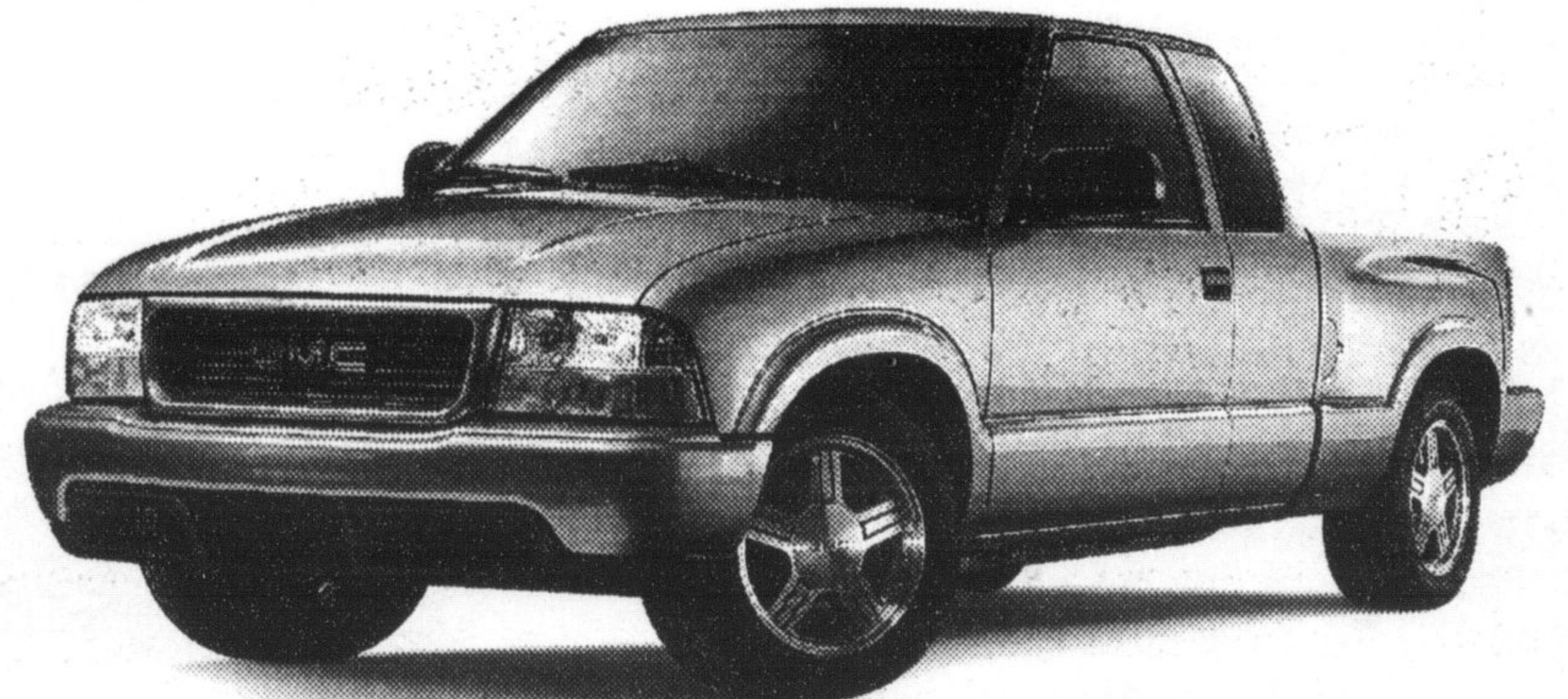
**1.9%**

UP TO 36 MONTHS\*

OR CASH PURCHASE PRICE

**\$23,288†**

EXCLUDES FREIGHT



For the latest information, visit us at [gmcCanada.com](http://gmcCanada.com), drop by your local Pontiac • Buick • GMC Dealer or call us at 1-800-GM-DRIVE.

\*Offers based on Sierra Ext. Cab R7U/Sierra Reg. Cab R7R/Sonoma 2WD Ext. Cab SLS R7L. Annual cost of borrowing 6.4%/6.4%/3.4% (Sierra Ext. Cab R7U/Sierra Reg. Cab R7R/Sonoma 2WD Ext. Cab SLS R7L) per annum. Annual kilometre limit of 20,000 km, \$0.12 per excess kilometre. Option to purchase at lease end is \$16,037.50/\$14,155.00/\$12,516.60 (Sierra Ext. Cab R7U/Sierra Reg. Cab R7R/Sonoma 2WD Ext. Cab SLS R7L) plus applicable taxes. Other lease options available. †Freight (\$990/\$990/\$810 - Sierra Ext. Cab R7U/Sierra Reg. Cab R7R/Sonoma 2WD Ext. Cab SLS R7L), licence, insurance, P.P.S.A., administration fees and taxes not included. Dealers are free to set individual prices. ‡The SMARTLEASE monthly payment and the GMAC purchase finance rate are not available with and are not calculated on the "Cash Purchase Price" shown. The difference between the price for the SMARTLEASE/GMAC Purchase Finance offer and the "Cash Purchase" offer is deemed under provincial disclosure laws to be a cost of borrowing, whether or not the same represents actual interest, and is required to be expressed as an annual percentage rate which is 6.20%/6.54%/4.68% (Sierra Ext. Cab R7U/Sierra Reg. Cab R7R/Sonoma 2WD Ext. Cab SLS R7L). †Financing on approved GMAC credit only. Example: \$10,000 at 1.9% APR, the monthly payment is \$285.99 for 36 months. Cost of borrowing is \$295.64. Total obligation is \$10,295.64. \$10,000 at 3.9% APR, the monthly payment is \$225.34 for 48 months. Cost of borrowing is \$816.32. Total obligation is \$10,816.32. Down payment/trade and/or security deposit may be required. Monthly payment and cost of borrowing will vary depending on amount borrowed and down payment/trade. \*†Offers apply as indicated to select 2001 new or demonstrator models equipped as described and to qualified retail customers in the Ontario Pontiac Buick GMC Dealer Marketing Association area only. Limited time offer which may not be combined with other offers. Dealer order or trade may be necessary. See your dealer for details.

