

Local daycare providers concerned about JK plan

By FANNIE SUNSHINE
The Champion

Transportation and professional development (PD) days are some of the issues troubling daycare supervisor Dianne Kayess regarding the implementation of JK classes, scheduled to begin in September.

"Many parents will be bringing their kids back to the daycare after junior kindergarten classes are over," said Ms. Kayess, supervisor of Rainbow Village Daycare Centre.

"It's going to be impossible to transport all the children from the school to the daycare. School holidays are another concern for us because we won't have enough room to accommodate all the children. As a day care this isn't ideal for us."

The Halton District School Board approved a two-year imple-

mentation plan for JK Wednesday to be offered in an all-day, alternate-day format at public schools in Halton.

Half of Halton's public schools will offer the JK program for this coming school year. The remainder of the schools will offer the program beginning in September, 2002.

"We offer a two-year program at the nursery," said Julie Mattell, president of the board of directors of Milton Community Nursery School.

"Some of the children will stay for the full two years and others will stay only one. With Junior Kindergarten, we may be losing the children in the second year."

But one of her biggest concerns is the student to teacher ratio in the schools compared to that of the nursery.

"In the nursery the ratio of children to a teacher is six to one. In a school setting dealing with junior kindergarten, it's 23 to one. It's a

long day to be in a class with one teacher. Can they get the appropriate care they would receive at the nursery?"

And the all-day, alternate-day schedule didn't sit well with her either.

"It's a long time to be in an institute type setting," Ms. Mattell said. "A lot of them (children) won't go home for lunch. This program will also affect programs at the Leisure Centre, for example. If a skating program is held on a Monday or a Wednesday, those children won't be able to take part in the activities."

A public meeting is scheduled at the nursery April 11 at 7 p.m. to discuss with parents the differences between nursery school and JK.

Heather Jackson, executive director of Milton Community Resource Centre's Nursery School, said JK will have a negative impact on their nursery school programs.

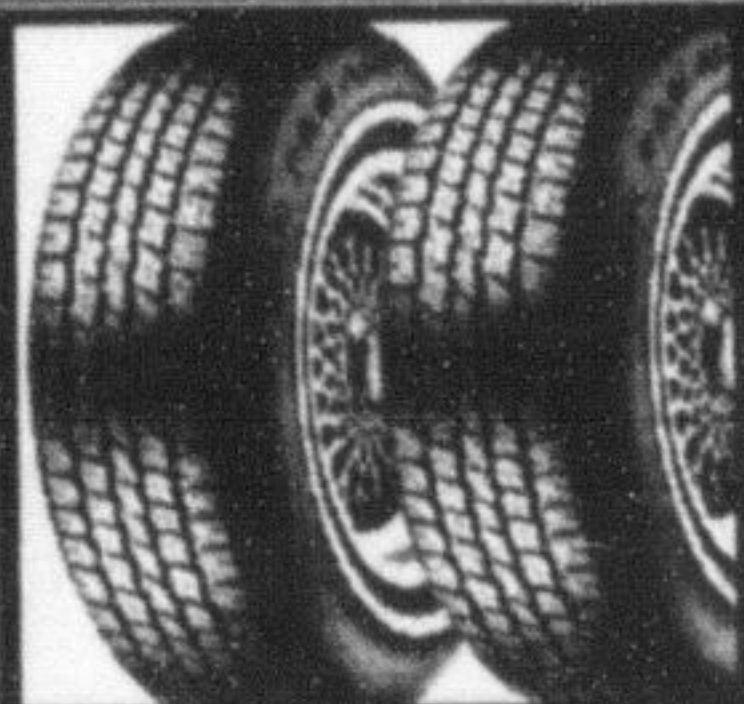
"Our program is for children • see JK on page 5

We do everything POSSIBLE to keep your life ROLLING SMOOTHLY

Spring into Summer Maintenance Package

- Lube, oil and filter • 15 point inspection including battery, coolant, tires, wipers, hoses and belts • Tire rotation • Brake inspection
- Top up fluids • Set tire pressure

\$39⁹⁵



One-Two Tire Event

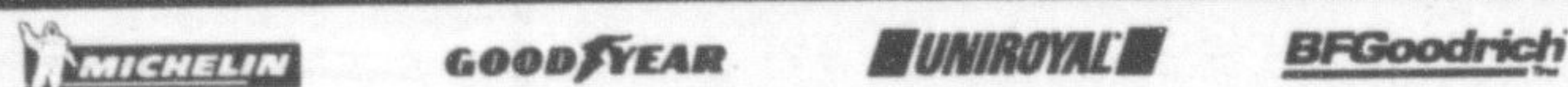
FREE INSTALLATION AND BALANCING
Prices include installation, balancing, stems, 4-year road hazard protection and lifetime inspection and rotation every 10,000 km. Plus an 80,000 km treadwear warranty on Uniroyal Tiger Paw ASC tires.

UNIROYAL TIGER PAW ASC P185/75R14
\$64⁹⁵ **\$124⁹⁵**
One Tire Two Tires
FITS MOST '90-'94 SUNBIRDS AND CAVALIERS

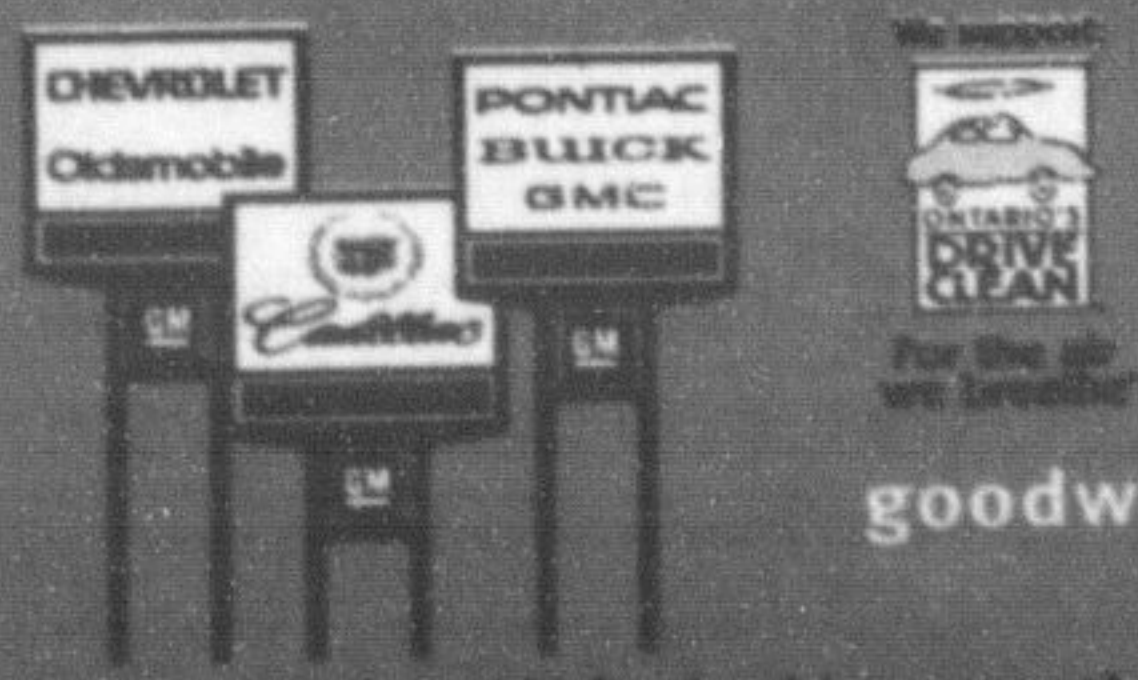
UNIROYAL TIGER PAW ASC P195/70R14
\$70⁹⁵ **\$135⁹⁵**
One Tire Two Tires
FITS MOST '95-'98 ACHIEVAS AND GRAND AMs

UNIROYAL TIGER PAW ASC P205/70R15
\$77⁹⁵ **\$149⁹⁵**
One Tire Two Tires
FITS MOST '92-'98 TRANS SPORTS AND LUMINA VANS

LAREDO AWP P235/75R15
\$108⁹⁵ **\$209⁹⁵**
One Tire Two Tires
FITS MOST '95-'00 SILVERADOS, SIERRAS, S-10s AND SONOMAS



BEAT THE RUSH ON SUMMER HEAT.
HAVE YOUR AIR CONDITIONING SYSTEM INSPECTED TODAY.



Goodwrench Service
Right. On time.

goodwrench.gmcanada.com 1-800-GM-DRIVE

Participating GM Dealerships may set individual prices. Plus tax. LCP includes up to 5L of GM premium motor oil, offer valid on most GM vehicles. Offers available to retail customers only. See Service Advisor for more details or call 1-800-GM-DRIVE. Limited time only. While supplies last. An official trademark of the Province of Ontario used with permission.

ATTENTION MILTON

8.7% Financing up to 60 mths O.A.C.

New Spring Arrivals!

Hurry In for best selection - Over 45 cars to choose from

KIM MANOS

BOB

BRYAN

CHERYL

DENNIS

6 mo. Powertrain Warranty with all Optimum Used Cars

\$15,995

'94 Cadillac Sedan Deville
4 dr, auto, air, V8, pw, pl, tilt, leather seats, loaded.
#P1724B

\$26,876

'97 Cadillac STS
4 dr, V8, auto, air, pw, pl, moonroof, fully loaded. Only 65,000 km.
#129472A

\$19,834

'98 Cadillac Catera
V6, pw, pl, tilt, pwr roof, leather, loaded. #P1735

\$29,976

'98 Cadillac Concours
4 dr, V8, auto, air, luxurious leather, p.moonroof, fully loaded. Blk w/only 49,900 km. #P1733

\$18,995

'99 Buick Century
4 dr, V6, auto, air, pw, pl, tilt, cruise, one owner. Only 66,000 km. Champagne in colour. #250531A

\$13,995

'99 Pontiac Sunfire
4 dr, auto, air. Only 66,000 km. It won't last! #P1666A

\$47,852

2000 Cadillac STS
4 dr, V8, auto, pw, pl, leather inter., onstar, full balance of maintenance pkg. Only 29,000 km.
#P1719

\$11,976

1996 Chrysler Intrepid
Power, pl, tilt, cruise, loaded, one owner, only 83,000 km #312800A

\$36,995

2000 Cadillac Catera
4 dr, V6, pw, plw, cruise, leather trim, moonroof, heated seats, white in colour. Only 7,000 km. Value Plus! P1728

\$15,876

1997 GMC Pickup
1/2 ton, reg. cab, auto, V6, air #205254A

\$16,852

2000 Malibu
4 dr, auto, V6, air, pw, pl, tilt, cass/cd, loaded. Only 38,000 km. #P1731

• 2000 Buick LaSabre • 1997 Honda Civic
• 1999 Regal LS • 1996 Sable*
• 1999 Sedan Deville • 1996 Intrepid*
• 1998 Cavalier • 1994 Sedan Deville*
• 1998 Monte Carlo • 1995 GMC 4x4 1/2 Ton
• 1998 Park Ave. Ultra • 1998 GMC 1/2 Ton Pick-up

* Financing apply to 1996 and newer. * 3 mths, 5,000 km warranty on these vehicles.

WALLACE PONTIAC BUICK CADILLAC LTD.

Wallace

PONTIAC • BUICK • CADILLAC

878-2355

Toll Free 1-888-878-2354

New Address

801 MAIN ST. E. MILTON

MON. - THURS.
9:00 AM - 9:00 PM
FRI. & SAT.
9:00 AM - 6:00 PM

• PONTIAC • BUICK • CADILLAC • GMC • PONTIAC • BUICK •