

SAVE UP TO  
50% OFF

Since  
1978

the  
**Sleep Factory**



"CANADA'S MATTRESS SUPERSTORE"

NO PAYMENTS  
NO INTEREST  
for 1 Year  
(see store for  
details)

# MARCH MADNESS!

## FURNITURE AND MATTRESS SALE ...

### FUTON SALE

**A-Frame Futon**



\$159

**Iron Futon**



\$209

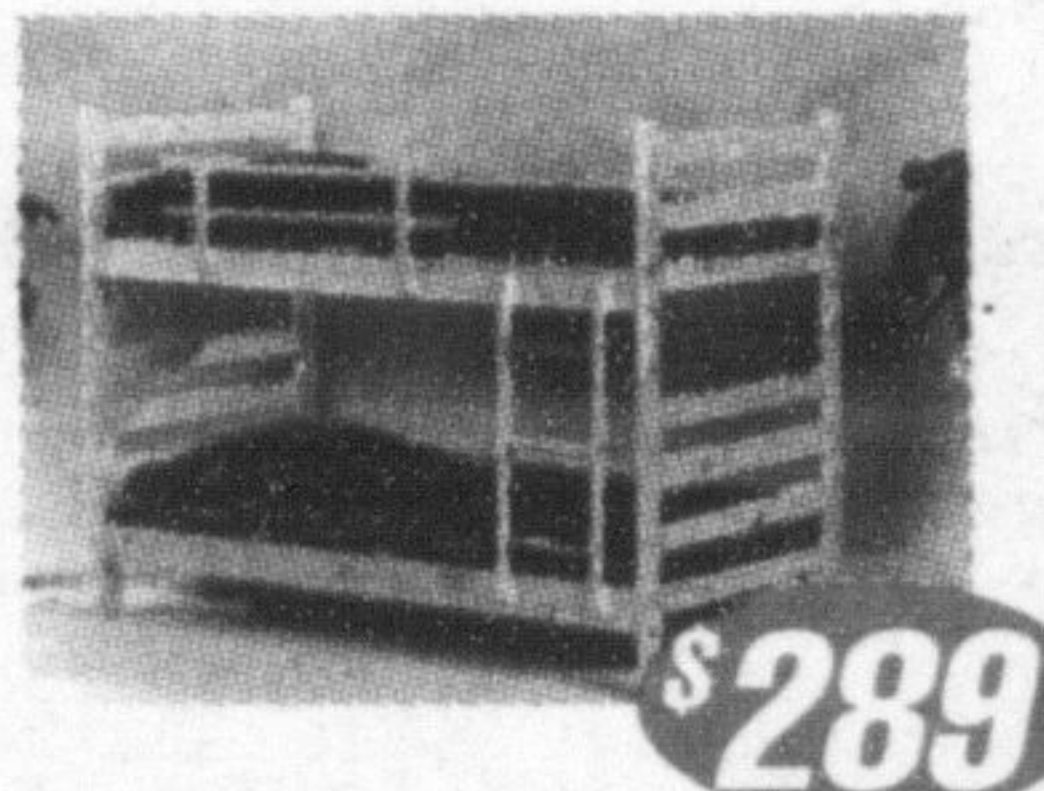
**Alexander Futon**



\$389

### BUNK BED SALE

**Harvard Bunk**



\$289

**Iron Futon Bunk**



\$329

**Milan Twin/Double**



\$489

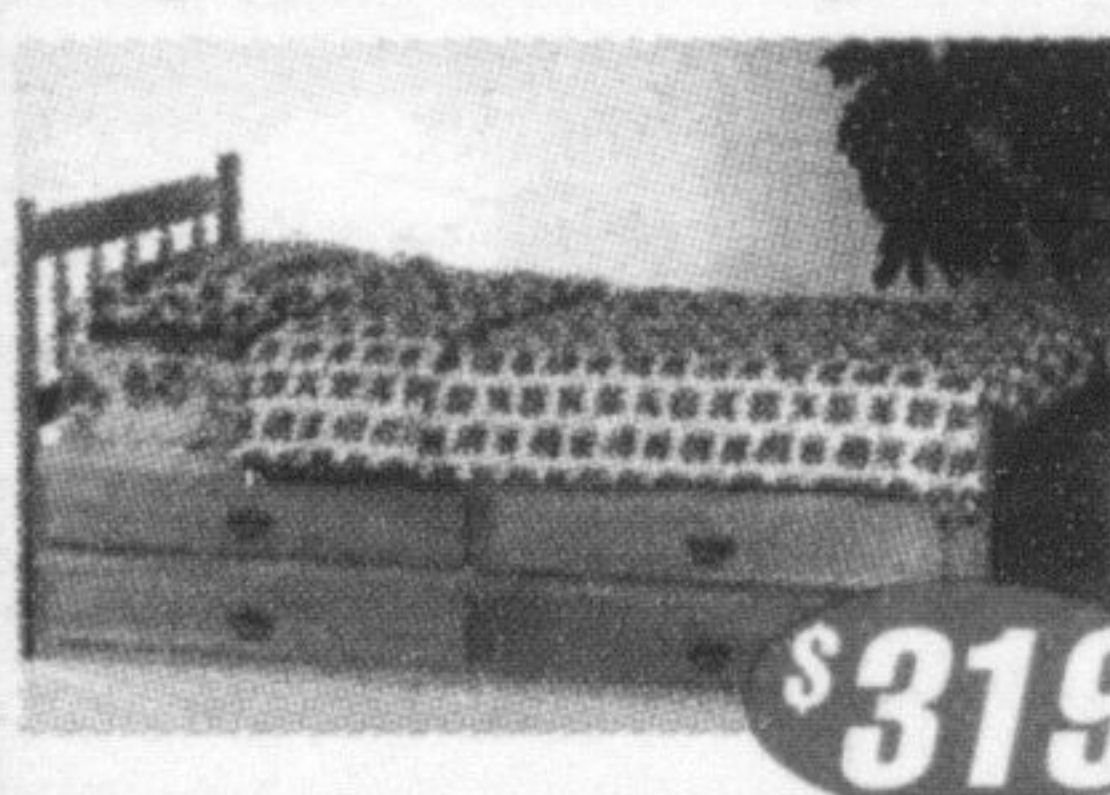
### STORAGE BED

**Mate's Bed**



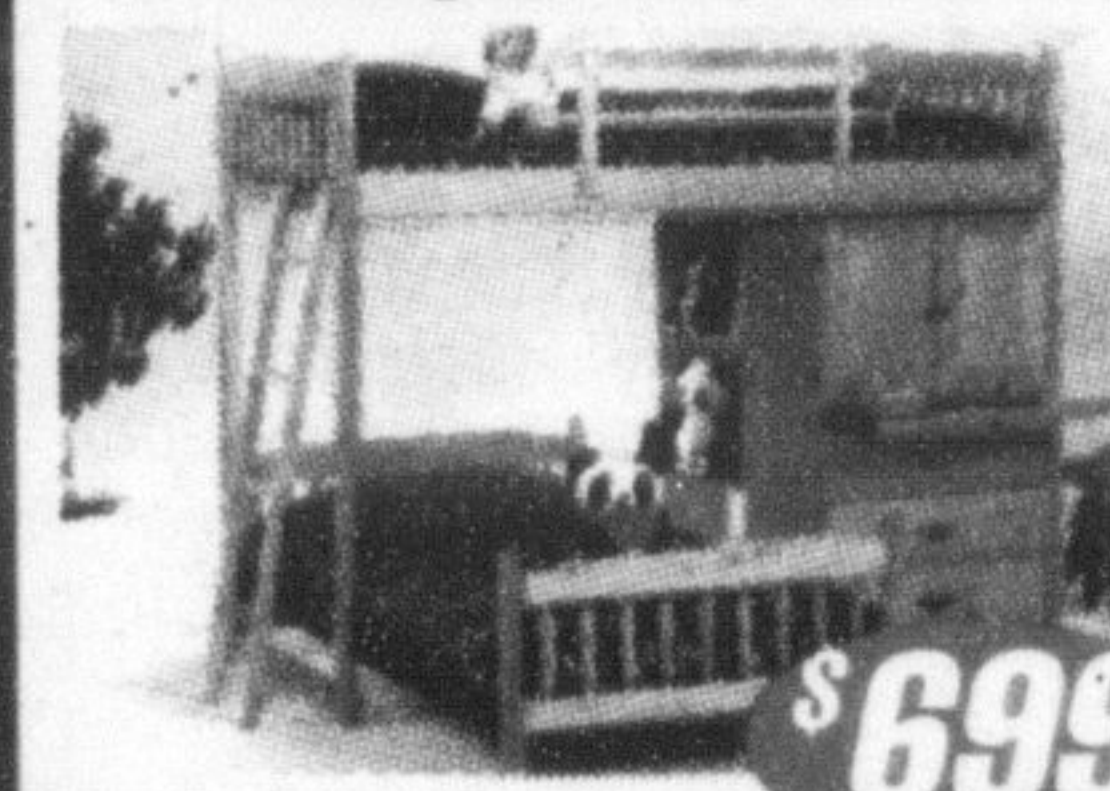
\$269

**Captain Economy Bed**



\$319

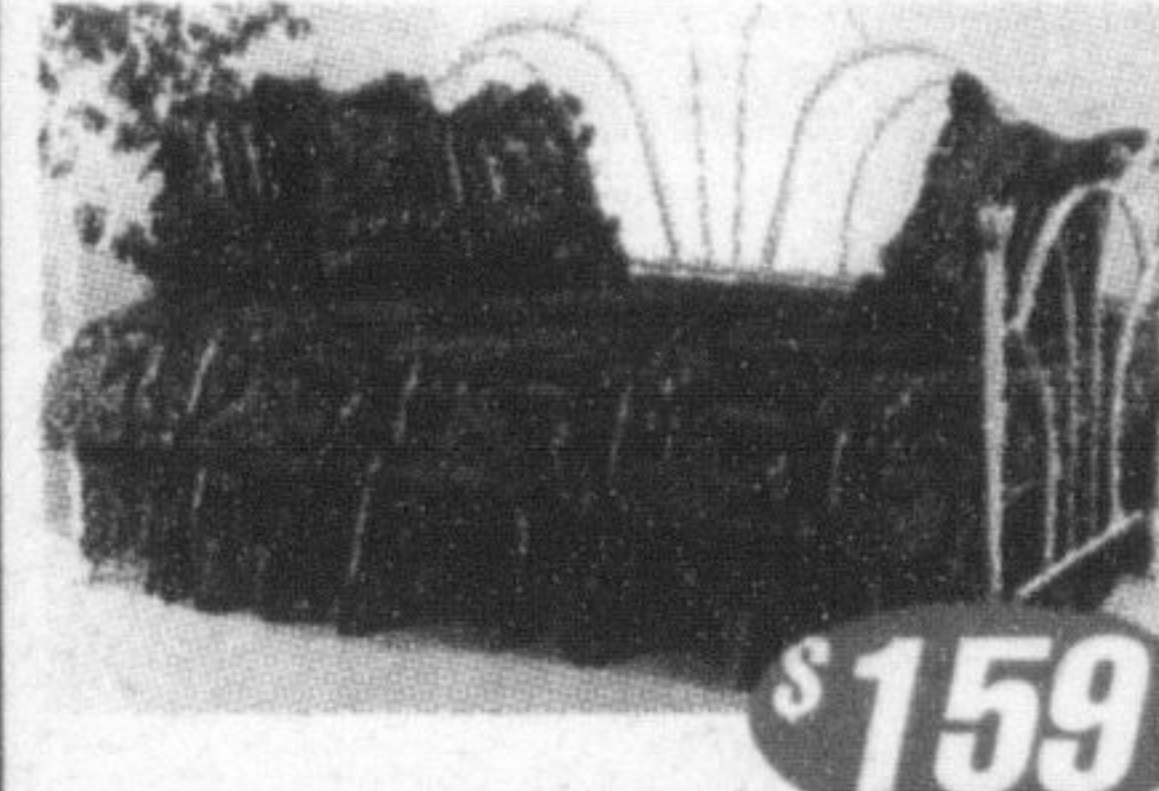
**Crewquarter Bunk**



\$699

### IRON BED SALE

**Vanessa Day Bed**



\$159

**Christina Day Bed**



\$229

**Monaco Bed**



\$399

### SPECIAL BEDS

**Spyder Bed**



\$189

**Peacock Bed**



\$189

**Electric Bed**



\$1289

### 15-YR. Warranty

Comfort Sleep **REGULAR SUPPORT**

Single Mattress  
**\$179**  
Set \$319

DOUBLE 219 Set 389  
QUEEN 279 Set 479  
KING 469 Set 779

### 20-YR. Warranty

Orthopedic **FIRM SUPPORT**

Single Mattress  
**\$219**  
Set \$369

DOUBLE 269 Set 439  
QUEEN 329 Set 499  
KING 509 Set 799

### COUPON

Any **5 FREE CHOICES**

- Bed Frame
- Comforter
- Pillow Protector
- Pillow Cases
- Layaway
- Percalé Set of Sheets
- Mattress Pad
- Pillow
- Local Delivery
- Bed Rails
- Set-up
- Sheet Straps
- Disposal of Old Set

With Any Mattress Set Purchased

### 25-YR. Warranty

Orthopedic **EXTRA FIRM SUPPORT**

Single Mattress  
**\$259**  
Set \$429

DOUBLE 319 Set 499  
QUEEN 389 Set 559  
KING 549 Set 859

### 25-YR. Warranty

Pocket Coil S/E **INDIVIDUAL SUPPORT**

Single Mattress  
**\$369**  
Set \$539

DOUBLE 459 Set 649  
QUEEN 559 Set 749  
KING 689 Set 1029

Since  
1978

the  
**Sleep Factory**



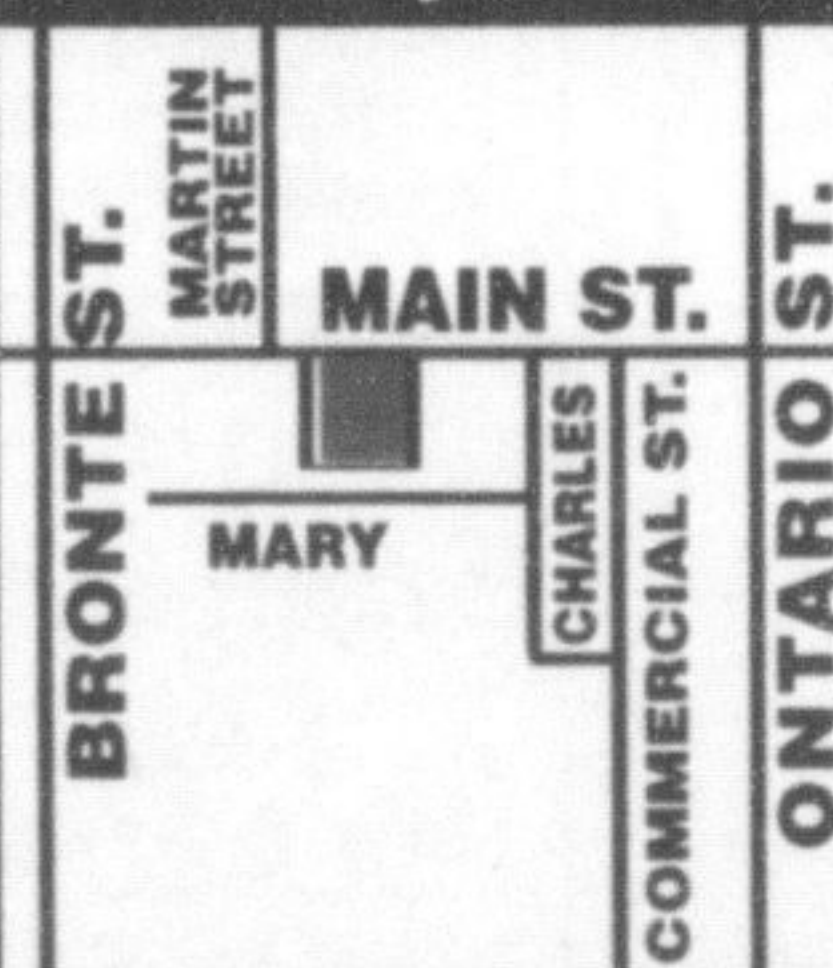
"CANADA'S MATTRESS SUPERSTORE"

- Visit our website at [www.sleepfactory.com](http://www.sleepfactory.com)
- Financing available • Senior Discount
- Over 40 locations across Canada
- We customize



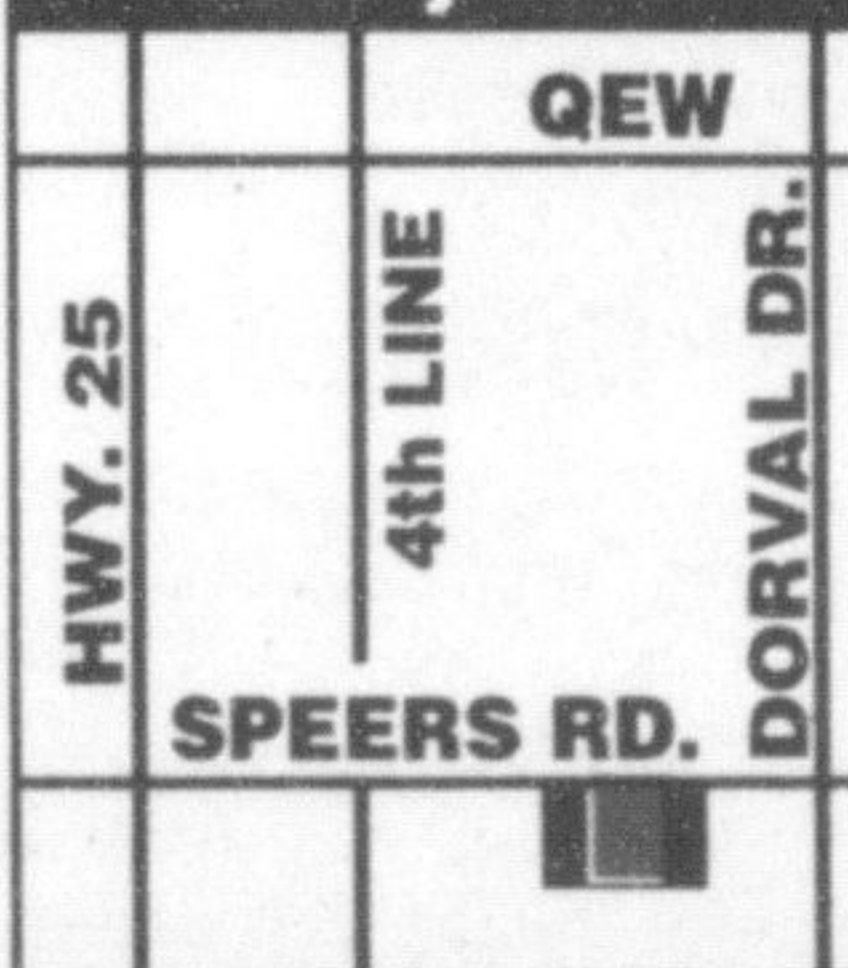
Hours:  
Mon.-Wed. 10-6 p.m.,  
Thurs.-Fri. 10-9 p.m.,  
Saturday 9-6 p.m.,  
Sunday 11-5 p.m.

#### Factory Outlet



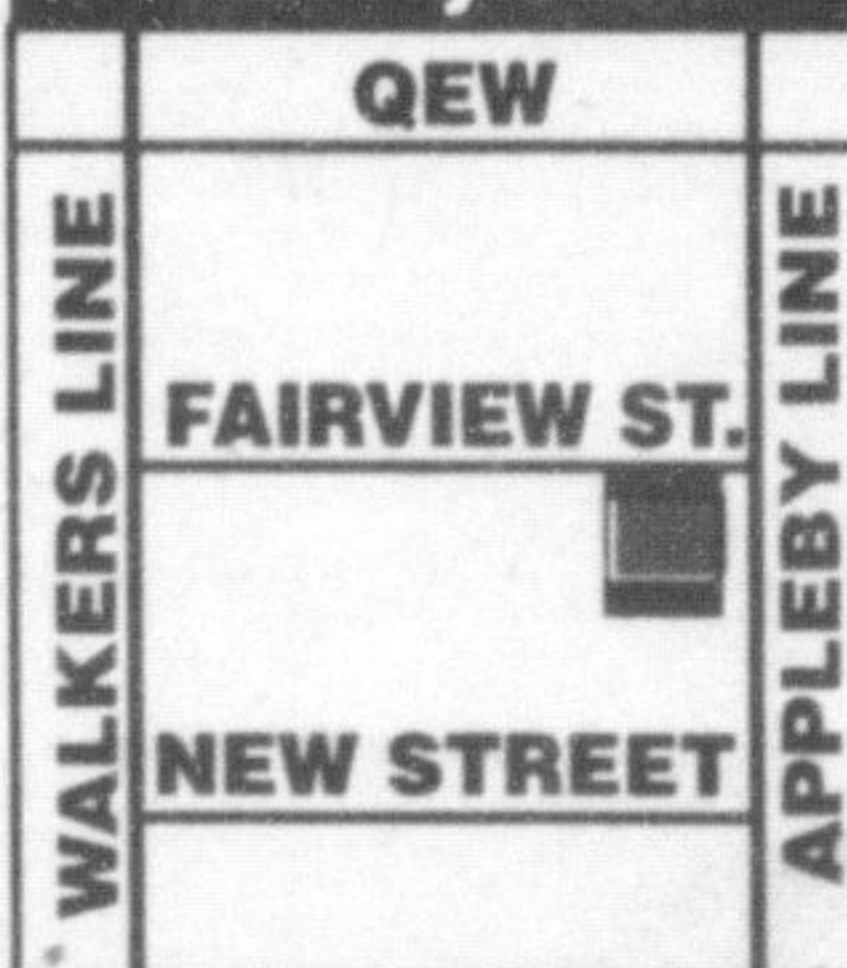
246 Main St. E.  
MILTON  
**878-4606**  
Phone Orders Accepted

#### Factory Outlet



490 Speers Road,  
OAKVILLE  
**842-3368**  
Phone Orders Accepted

#### Factory Outlet



4460 Fairview St.,  
BURLINGTON  
**681-9020**  
Behind McDonald's