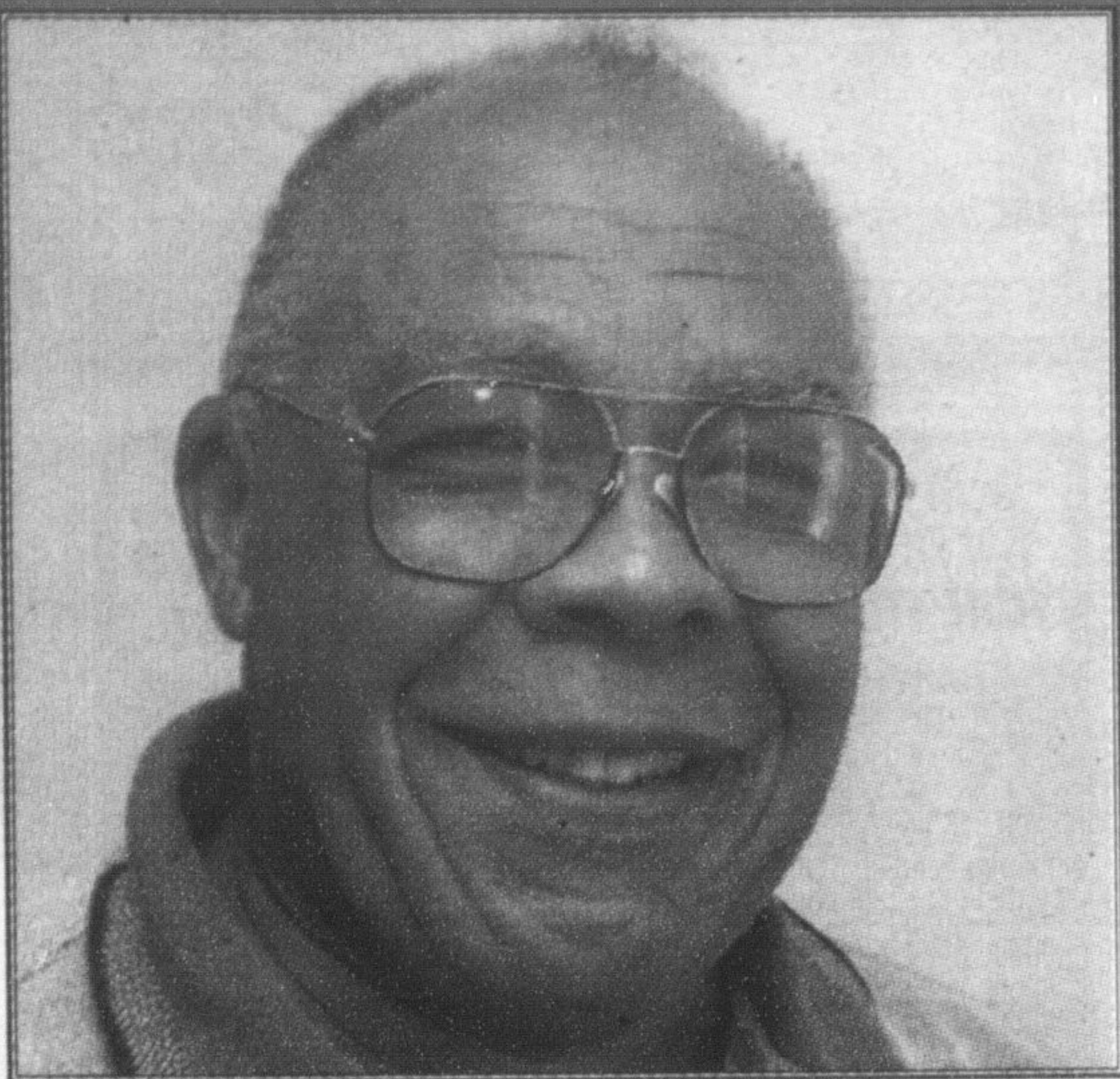


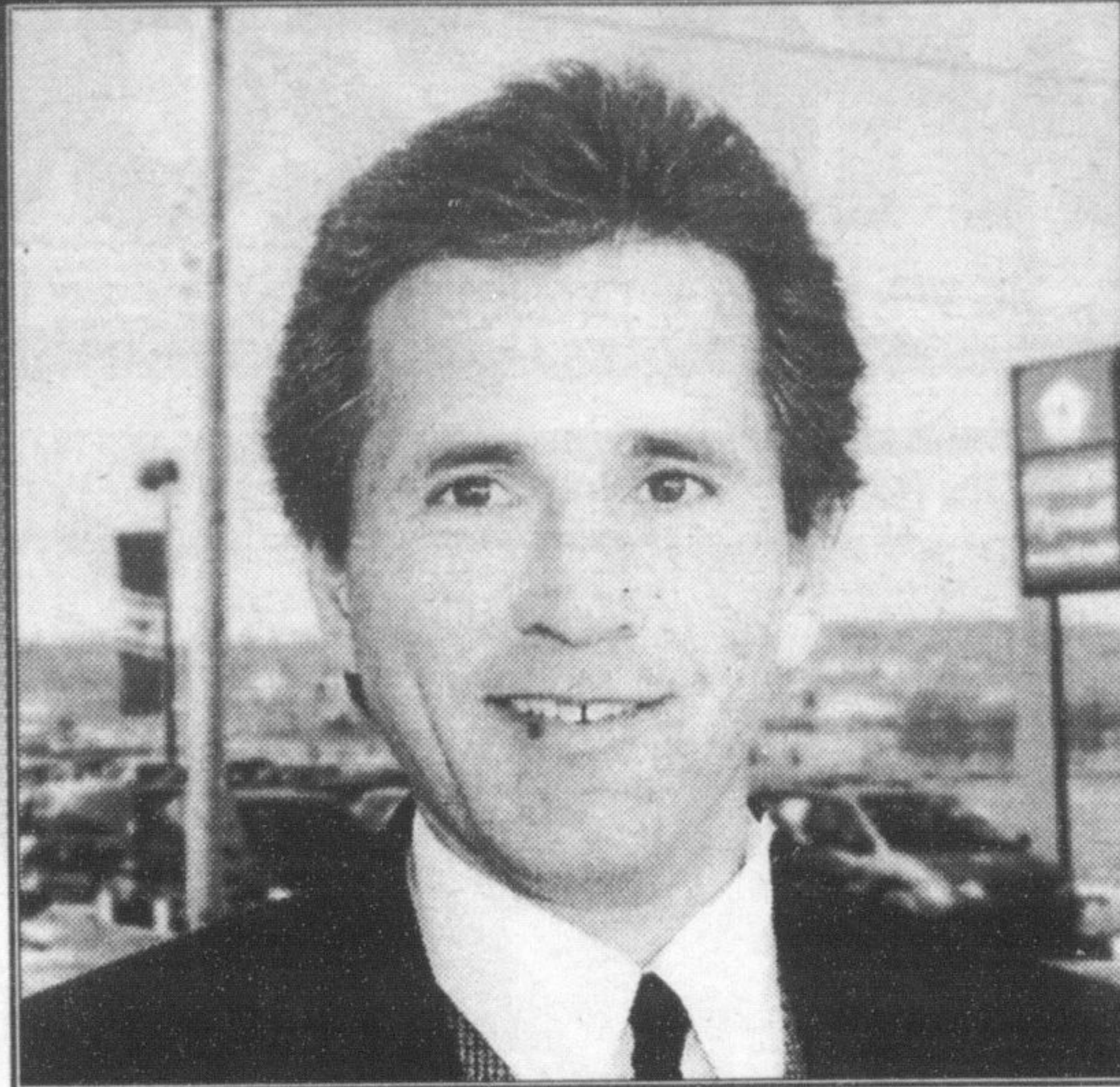
AUTOMOTIVE SALESPEOPLE OF THE YEAR



DENNIS STEELE

Peter Smith, General Manager and Kim Manos, General Sales Manager of Wallace Pontiac, would like to congratulate Dennis Steele for being top producer for the year 2000. An achievement such as this is only made possible through hard work and a commitment to customer satisfaction. Dennis thanks all his customers and friends, and looks forward to serving your automotive needs in 2001.

Wallace
PONTIAC • BUICK • CADILLAC
801 MAIN ST. E., MILTON 878-2355
Toll Free 1-888-878-2354



TODD LANDRY

Gary Hunt, President, takes great pleasure in congratulating Todd on achieving Salesman of the Year honours.

Todd's hard work and dedication to customer service has been instrumental in his reaching this milestone. Todd thanks his many customers and friends, and wishes everyone a happy and prosperous 2001.

FIVE STAR
Your ★★★★★ Dealership
HUNT
Chrysler Jeep
500 Brodie St. S. Milton 876-2580



MEL CORBETT

Peter Smith, General Manager and Kim Manos, General Sales Manager of Wallace Pontiac, would like to congratulate Mel Corbett for being top producer for the year 2000. An achievement such as this is only made possible through hard work and a commitment to customer satisfaction. Mel would like to thank all his many customers for their patronage over the last 11 years and looks forward to helping them with their future automotive needs.

Wallace
PONTIAC • BUICK • CADILLAC
801 MAIN ST. E., MILTON 878-2355
Toll Free 1-888-878-2354



*We've thought about it,
We've talked about it,
and, Finally we're just going to do it....*

35¢ WINGS!

Mon. & Tues. 11 am - close
(take-out wings available - 50¢ each)

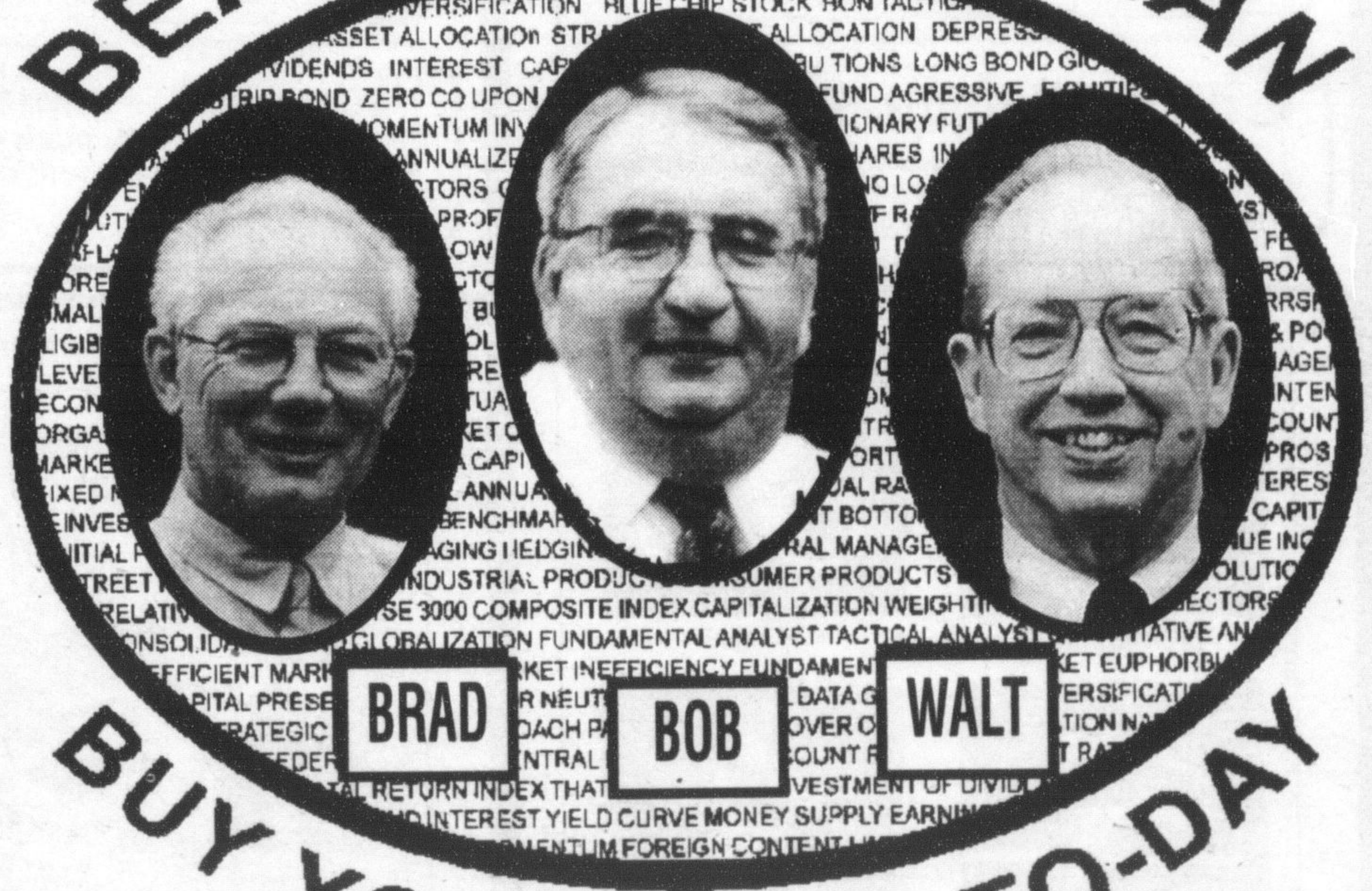
Thank-you Milton, for making our wings
some of the best in town!



Charley FitzWhiskey's
55 Ontario Street N. 878-6697

FOR FREE CONSULTATION IN YOUR HOME PLEASE CALL
BRAD CLEMENTS 1-800-813-5773 WALT ELLIOT 876-3377 BOB WALLACE 1-800-813-5773

BEAT THE TAX-MAN



BUY YOUR RRSP TO-DAY

INSURANCE:
LIFE & DISABILITY

FARM MUTUAL
FINANCIAL SERVICES INC.

GICs
MUTUAL FUNDS
RRSPS, RRIFs, RESPS
SEGREGATED FUNDS
INVESTMENT ACCOUNTS
LABOUR SPONSORED FUNDS