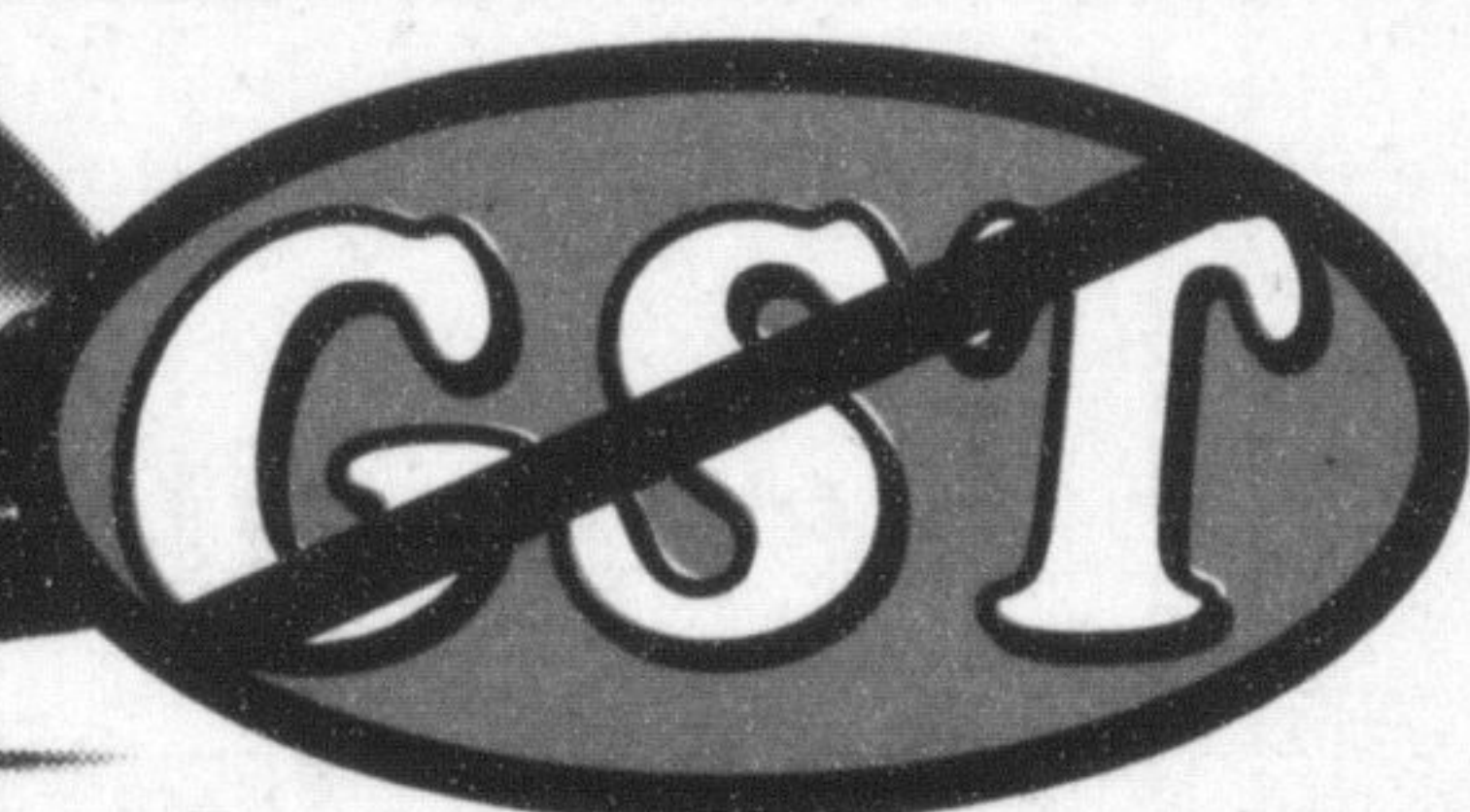
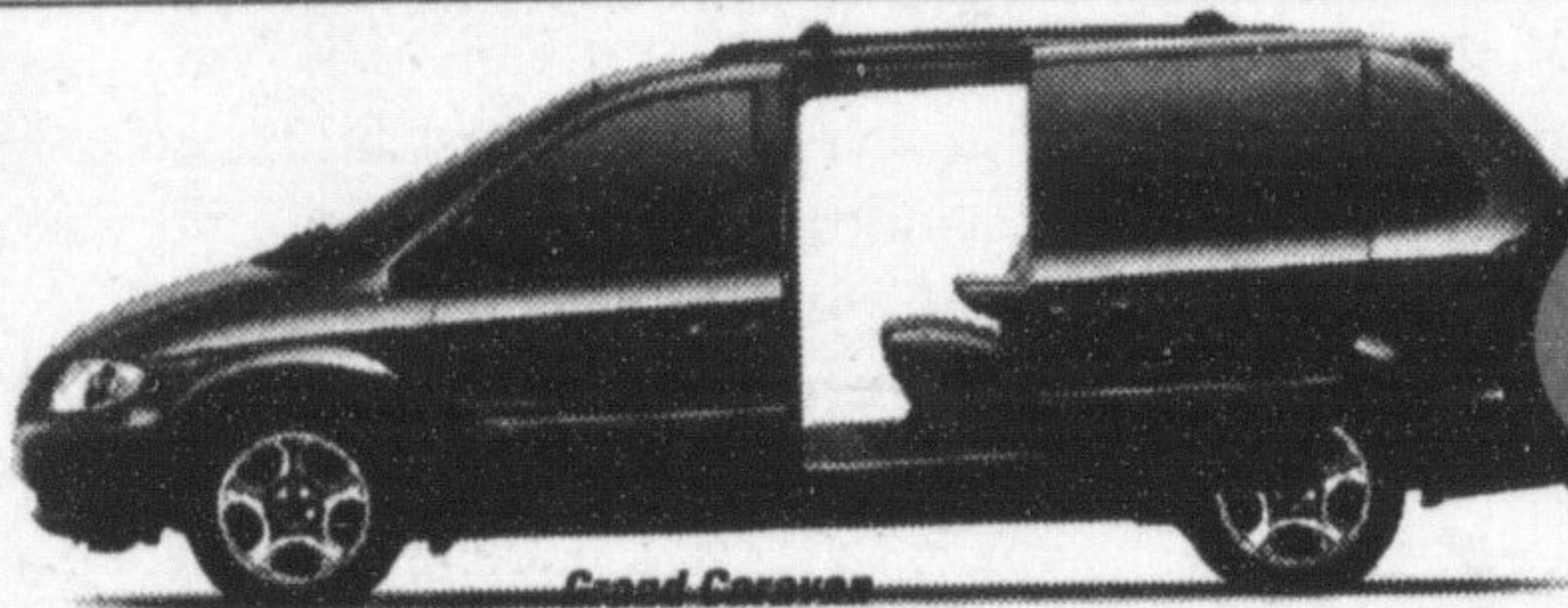


FINAL COUNTDOWN FOR CHRYSLERS

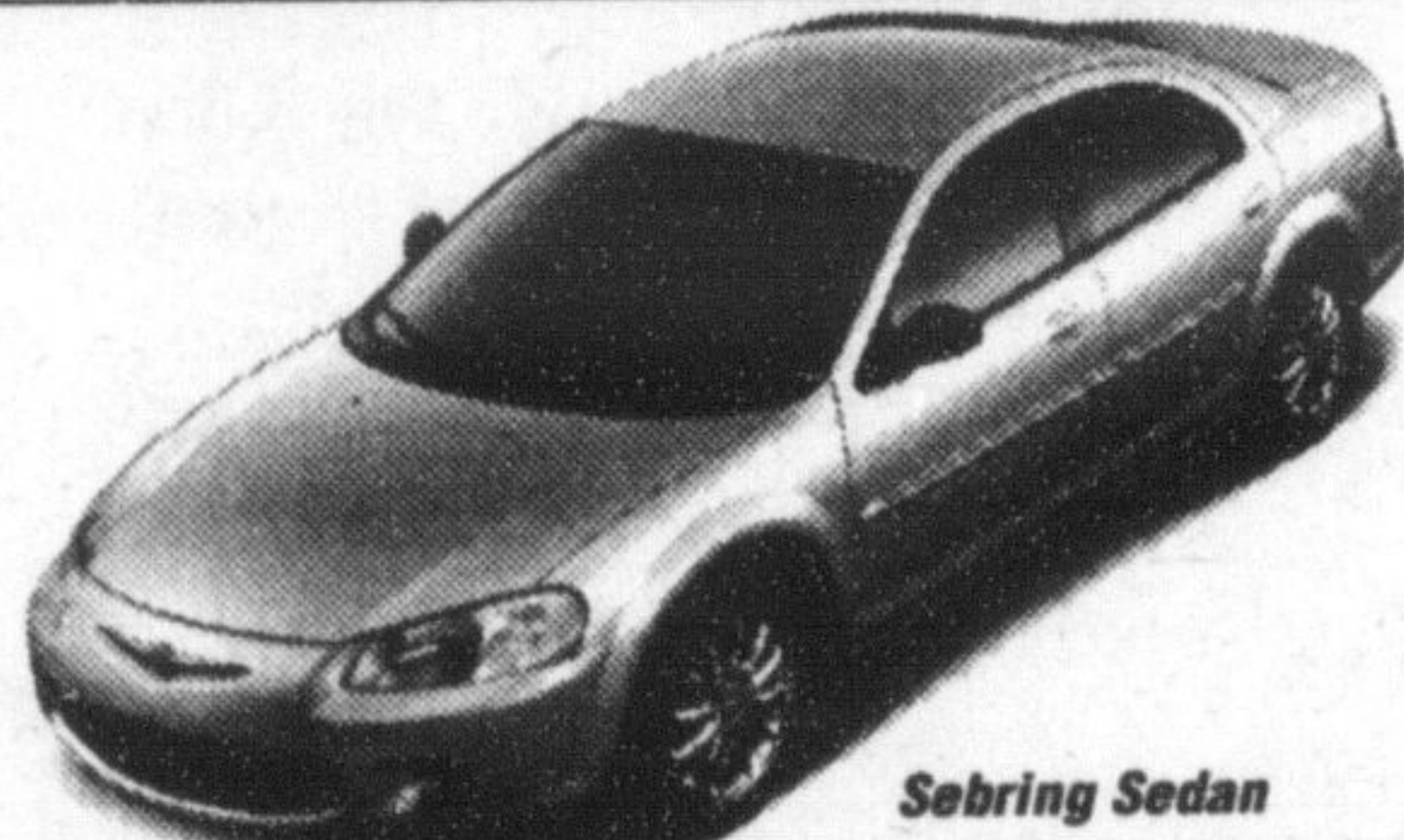
NO GST

HOLIDAY SALES EVENT

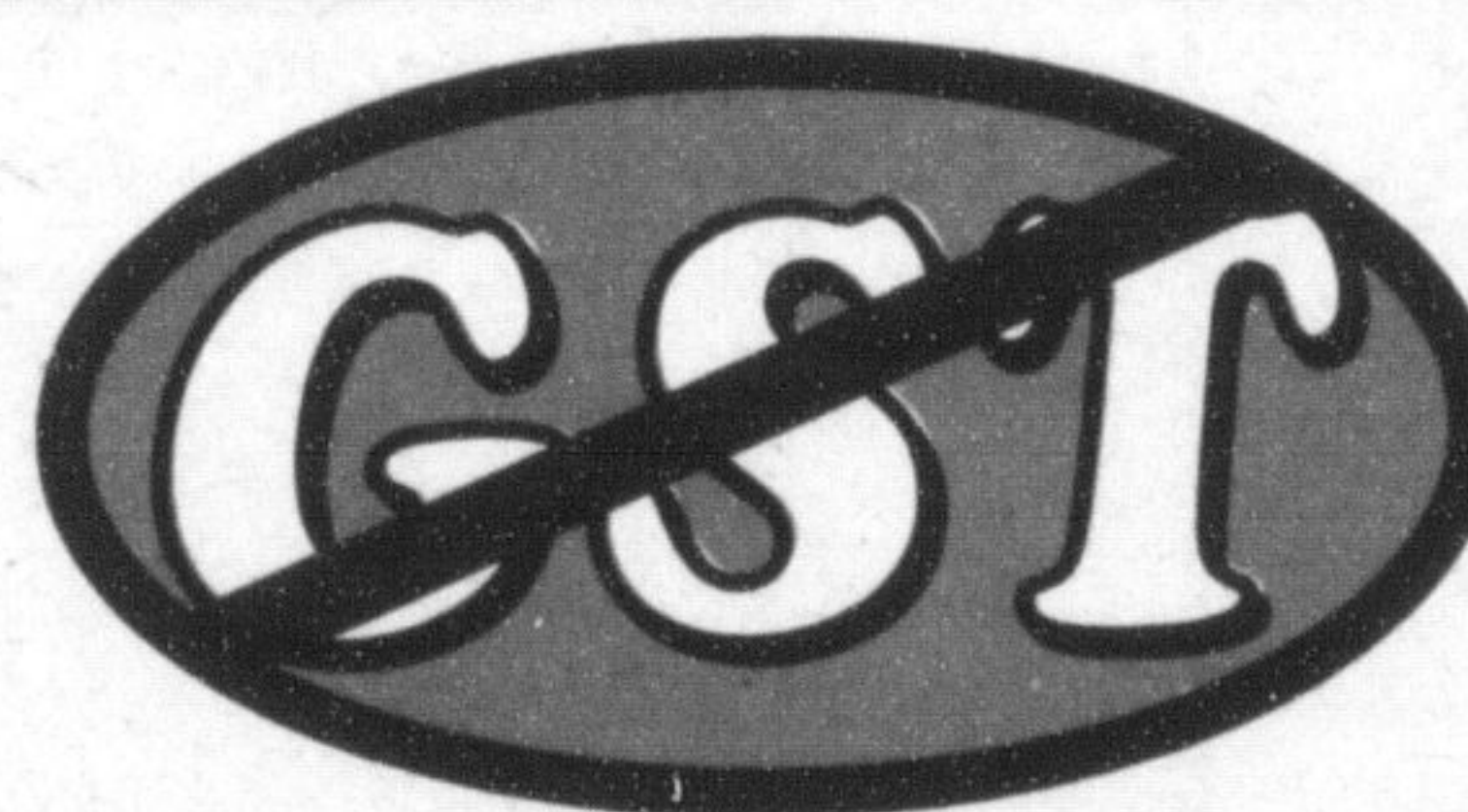
2000 & 2001 CARAVANS/GRAND CARAVANS



2000 & 2001 CHRYSLER MODELS



2000 & 2001 DODGE TRUCK MODELS



2000 & 2001 JEEP MODELS



**FOR THE HOLIDAYS ONLY,
MOST IN-STOCK BRAND
NEW 2000 & 2001 MOD-
ELS RECEIVE A**

\$500* PRE-TAX
DISCOUNT
AND PAY
NO GST

**AND NO DOWN PAYMENT
AND PAYMENTS
FOR 90 DAYS.**

0%*
CHRYSLER
FINANCE
RATE UP TO
**48 MONTHS ON OUR
REMAINING
2000 MODELS.
60 MONTHS ON NEONS.**



878-8877

81 ONTARIO ST. N. MILTON

one block north of the Milton Mall

"WE SELL SATISFACTION"

**BETTER SELECTION
BETTER SERVICE
BETTER PRICE**



**"It's the
changing nature
of policing."
.....
EAN ALGAR**

Cops step up fight against domestic violence

By **HOWARD MOZEL**
Special to The Champion

Halton Regional Police, who say domestic violence is already a "very high priority," have vowed to allocate even more resources to combat the problem.

"Everything is better and more enhanced," said Det. Jennifer Knight, whose position as domestic violence co-ordinator was approved just more than a year ago.

"We're doing a better job."

That said, Halton Regional Police Services Board Chair Jack Brewer maintained that anything more that can be done will be done.

"It's a serious problem and one that cannot be overlooked," he said.

Det. Knight's new job and 213 recommendations stemming from the May/les Inquest — 60 of them directly related to law enforcement — have led to a host of improvements in how officers deal with, keep track of and prosecute domestic violence offenders.

The inquest resulted from a 1996 case in which a man murdered his partner in full view of her children.

Report not detailed

In the past, two officers responded to domestic calls for their own safety and filled out a simple, one-page report which Det. Knight admitted wasn't detailed enough.

Since September, new policies have been implemented in Halton that mirror upcoming provincial adequacy standards and emphasize that police are treating domestic violence as a serious criminal offence.

A pair of officers still attend calls, but they're accompanied on most occasions by a supervisor.

A more detailed three-page report is also completed.

The new Supplementary Domestic Incidence Report collects a variety of evidence such as the emotional and physical condition of victims as well as suspects. The Risk Indicators Form helps officers determine whether a suspect should be released on bail or held in jail.

In addition to the victim, all parties involved (neighbours, children etc.) are interviewed while facts about previous assaults are ascertained.

Evidence for court — such as photos of injuries and property damage — are thor-

• see BOTH on page 13

*\$500 Discount & No GST allowance available on all new 2000 & 2001 in-stock models excluding PT Cruiser, Viper & Prowler. 0% Special Finance Rates are available in lieu of No GST Program and only on 2000 models excluding Viper & Prowler. 2001 models qualify for other Special Finance Rate Programs. †Sale prices include \$500 cashback & GST discount. ‡Must add for freight, administration fee, applicable taxes & license. Special finance rates available in lieu of GST program.