

# Timbers runs in Ward 2

By IRENE GENTLE  
The Champion

If there's a generational divide between members of Town Council and some of their constituents, Municipal hopeful Jim Timbers aims to close it.

At age 29, the lifelong Milton resident has decided to sign on for the November 13 election.

He's running in Ward 2, against incumbents Wally Hunter, John Challinor and fellow newcomer Frank Wilson.

"Mostly after looking at what the current group of councillors have done, I don't think they're up to it," said Mr. Timbers.

## Seniors housing a concern

If elected, he'll focus on the need for seniors housing and recreational activities and facilities for youth.

But holding a master's degree in business means Mr. Timbers doesn't expect the Town to build the facilities so much as encourage them to locate in Milton.

"It's unreasonable to believe the Town would run or build a bowling alley. It isn't their place," he said. "But they could encourage that kind of development through incentives."

If elected, Mr. Timbers also hopes to tar-

get a dearth of physicians in town and at Milton District Hospital.

As with the lack of seniors' housing, he feels that need could have been addressed in the past.

"I'm not convinced the Town is looking that far forward," he said. "This isn't something that just suddenly happened."

With growth about to burst into Milton, Mr. Timbers believes the Town can't micro-manage the type of business that arrives.

"They want to attract business and growth but they want to pick and choose it," he said. "You can't turn down every business because the people on council don't happen to like it."

When it comes to campaigning, Mr. Timbers plans to get his name out by simply talking to people.

If elected, he plans to keep up the dialogue by taking time to ask people what their concerns are.

"Take one weekend a month and knock on doors and say 'Hi, I'm so and so,'" said Mr. Timbers.

He also hopes to make it a matter of record how council members vote on all issues.

"There's no way unless you show up for every meeting to know how your councillor voted," he said. "Accessibility and accountability are the two biggest things."

**Surf this!**



www.hsf.on.ca



HEART AND STROKE FOUNDATION OF ONTARIO

Keep up-to-date with the Heart and Stroke Foundation - browse through our new web site!



thermoshell

## OIL FURNACE SALE

- \$100 Off
- 12 Months No Interest or;
- 4.9% Financing (Up to 5 Years)
- 5 Years Furnace Maintenance Plan (Value of over \$650)
- FREE Thermostat

Collect AIR MILES® reward miles on all your heating oil purchases. Call now to become a collector. IT'S FREE.



(905) 878-6380 • 1-800-465-6071

# Liberal

RE-ELECT

# JULIAN REED

IN HALTON ON NOVEMBER 27, 2000



Campaign Headquarters: 159 Main St., MILTON L9T 1N7

Tel: (905) 875-2976

Email: julianreed@haltonliberal.com  
Website: www.liberal.ca

Authorized by Laurie Reed, the official agent for Julian Reed.

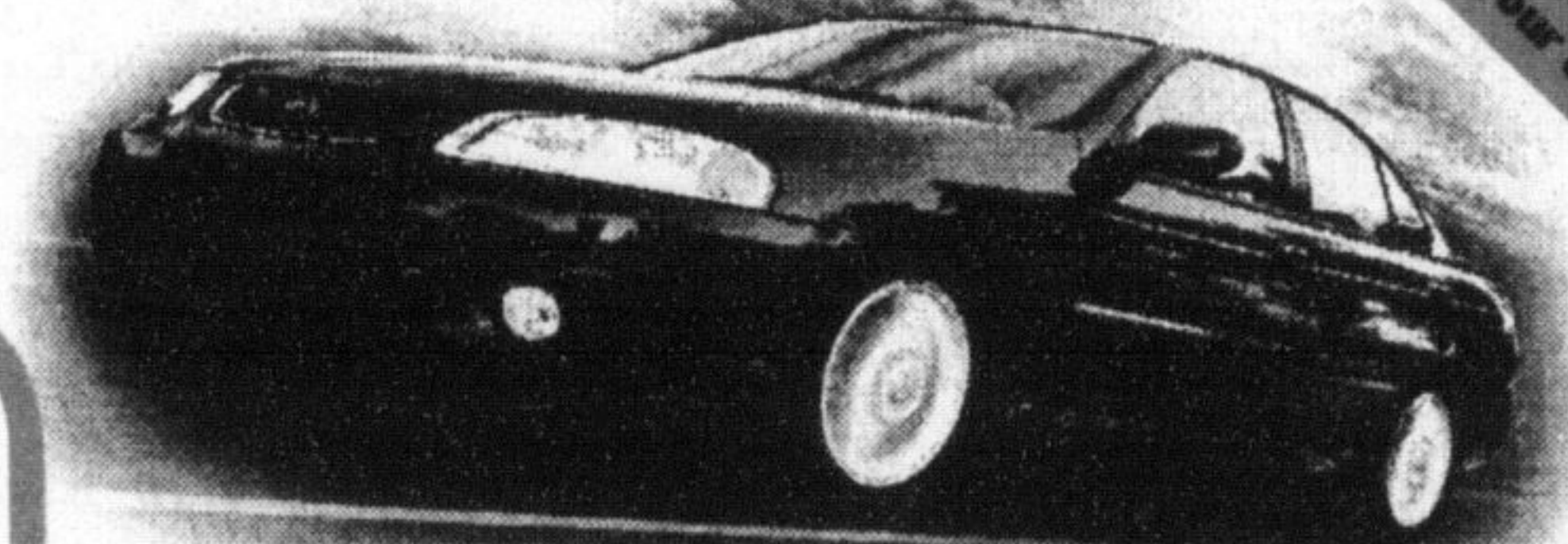
**Nissan's  
Come in for a Spin  
Sales Event is back!**



### The 2001 Sentra XE

• 126-HP 1.8-litre engine • Air conditioning • 4-speaker AM/FM with CD audio system • Colour-keyed body side mouldings • 60/40 split folding bench seat • Centre console armrest • Vanity mirrors, and more...

Purchase Sentra XE with Value Option Package for only **\$16,398** OR Lease Sentra XE with Value Option Package for only **\$198/mo.\*** for 48 months, only \$1,557 down.



Sentra XE starts at \$15,298

Low 4.8% financing available. Ask your dealer for details.

### The 2001 Altima GXE

• 155-HP 2.4-litre DOHC engine • AM/FM with CD audio system • 4-speed automatic transmission • Air conditioning • Remote keyless entry system with panic alarm • Dual airbags • Power mirrors and door locks • Keyless remote entry system • And more...

Purchase Altima GXE for only **\$23,798** OR Lease Altima GXE for only **\$298/mo.\*** for 48 months, only \$2,350 down.



Altima XE starts at \$19,998

Low 4.8% financing available. Ask your dealer for details.

**1 ONLY 2000 MAXIMA GXE 0.9% FINANCING O.A.C.**

\* SPECIAL PRICING ON ALL REMAINING 2000 MODEL XTERRA, CREW CAB TRUCKS & KINGCAB 4X4. FINANCING UP TO 72 MTHS, O.A.C. SEE DEALER FOR DETAILS

**NORTH END NISSAN**  
610 MARTIN ST. MILTON  
878-4137



It's only a great deal if you get a great car.

Come In For A Test Drive!

Some prices change and the list goes on. Not the cheapest you will find. Limited time offer on 2001 Sentra XE 5 speed manual with Value Option Package (Sentra XE model shown) \$16,398. 2001 Altima GXE automatic (Altima GXE model shown) \$23,798. 2001 Maxima GXE automatic (Maxima GXE model shown) \$29,998. \*48 month lease on 2001 Sentra XE model shown. \$198/mo. \$1,557 down. \$19,998. \*48 month lease on 2001 Altima GXE model shown. \$298/mo. \$2,350 down. \$19,998. \*72 month lease on 2001 Maxima GXE model shown. \$498/mo. \$4,997 down. \$24,998. All prices include destination and delivery (D&D) fee. Tax, license, insurance and other fees extra. Financing examples: \$23,798 at 4.9% per annum equals \$197.12 per month for 48 months. \$298 at 4.9% per annum equals \$298.00 per month for 48 months. \$498 at 4.9% per annum equals \$498.00 per month for 72 months. \*2001 Sentra XE 5 speed manual with Value Option Package (Sentra XE model shown) \$16,398. 2001 Altima GXE automatic (Altima GXE model shown) \$23,798. 2001 Maxima GXE automatic (Maxima GXE model shown) \$29,998. All prices include destination and delivery (D&D) fee. Tax, license, insurance and other fees extra. Financing examples: \$23,798 at 4.9% per annum equals \$197.12 per month for 48 months. \$298 at 4.9% per annum equals \$298.00 per month for 48 months. \$498 at 4.9% per annum equals \$498.00 per month for 72 months. \*2001 Sentra XE 5 speed manual with Value Option Package (Sentra XE model shown) \$16,398. 2001 Altima GXE automatic (Altima GXE model shown) \$23,798. 2001 Maxima GXE automatic (Maxima GXE model shown) \$29,998. All prices include destination and delivery (D&D) fee. Tax, license, insurance and other fees extra. Financing examples: \$23,798 at 4.9% per annum equals \$197.12 per month for 48 months. \$298 at 4.9% per annum equals \$298.00 per month for 48 months. \$498 at 4.9% per annum equals \$498.00 per month for 72 months.

## CLEARANCE SALE TRUCKS, SUV'S & MINI VANS

Come & see our great selection of pre-owned vehicles.  
All prices have been reduced!

 <b>1999 FORD F-150 XLT SUPER CAB 4X4</b> Short box. Loaded. 5.4 L V8, auto, od., electronic shift 4x4, captains chairs, p.seats, p.mirrors, remote keyless entry, 6 disc c/d changer, alum. rims, trailer tow pack., & more. <b>CLEARANCE PRICE \$26,978</b>	 <b>1999 DODGE DAKOTA SLT CLUB CAB 4X2</b> Well equipped, 3.9L SMPI V6, 4-sp, auto, tilt, cruise, 40/20/40 split bench, fog lamps, two-tone paint, box liner and more, balance of factory warr. <b>CLEARANCE PRICE \$18,898</b>	 <b>1998 DODGE RAM 1500 SLT LARAMIE</b> Ext cab, 4x4, 5.2L V8, white/grey interior. Loaded extra's incl. chrome side step rails, fold down organizer, cargo cover, c/d. New Michelin tires. <b>CLEARANCE PRICE \$19,988</b>
 <b>1990 FORD F-150 REG. CAB XLT</b> Blk & silver two-tone w/burgandy inter., 5.0L V8. Loaded. Ice cold A/C. Must see cond. <b>CLEARANCE PRICE \$4,998 certified</b>	 <b>1999 CHEV 2500 SILVERADO-HD</b> 4x4, 6L, V8, 51,000 km, 8600lbs GW. Dark blue/charcoal grey inter., P.S, P.B, tilt, cruise, alloy rims, ABS, A/C, bal. of f. warr. Hard to find. <b>CLEARANCE PRICE \$25,998</b>	 <b>1996 GMC YUKON SLT STARCRAFT</b> 4x4, 5.9L V8, Wow what a truck. Primrose metallic/neutral leather. 91,000 km. Will not disappoint. <b>CLEARANCE PRICE \$22,997</b>
 <b>1999 GMC JIMMY</b> 4DR, 4.3L Vortec. White/blk. cloth, 52,000 km, elec 4x4, P.W, P.L, tilt, cruise, center console, trail tow pkg., ABS, A/C, bal. of factory warr. <b>CLEARANCE PRICE \$21,998</b>	 <b>1998 FORD WINDSTAR GL</b> Blue w/ grey inter., 38,000 km, bal. of f. warr. Features incl. 3.8L VG, capt. chairs, rear audio control, privacy tint, roof rack, alloy rims, A/C, P.W, P.L, tilt, cruise. <b>CLEARANCE PRICE \$16,788</b>	 <b>1996 DODGE GRAND CARAVAN ES</b> Top of the line. 3.8 L, V6, Cherry red/grey inter. 4DR, keyless entry, capt. chairs, P.seat, P.W, P.L, tilt, cruise, privacy tint, roof rack, c/d player, alloys & more! <b>CLEARANCE PRICE \$13,898</b>

**SALES, LEASING & FINANCING AVAILABLE**

# PARKWAY AUTO TRADE

## 875-4925

www.autotrader.ca/parkwayautotrade  
6 MONTH POWERTRAIN WARRANTY INCLUDED IN ALL VEHICLES  
8215 LAWSON ROAD, MILTON

