

**PARK'S  
STRESS  
FREE  
PLAN**

**PARK'S "STRESS FREE" PURCHASE PLAN INCLUDES:**

- 6 MONTH/ 10,000 KM GLOBAL POWERTRAIN WARRANTY
- 6 MONTH ROADSIDE ASSISTANCE
- 30 DAY/ 2500 KM. EXCHANGE POLICY ON YOUR PURCHASE
- ONTARIO DRIVE CLEAN CERTIFIED
- FREE 1ST LUBE, OIL, & FILTER INCLUDING 10 POINT INSPECTION
- GUARANTEED NO MAJOR COLLISION DAMAGE
- BANK FINANCING & LEASING ON SITE
- EXTENDED WARRANTY AVAILABLE
- FULLY EQUIPPED SERVICE DEPARTMENT
- COMPETITIVE PRICING REVIEWED WEEKLY
- ALL PRICING INFORMATION CLEARLY SHOWN ON VEHICLES AND IN OUR ADVERTISING



**1998  
BLAZER LT  
4x4**

**\$537<sup>94</sup> mo.  
\$22,988**

Black, V6, Auto, Air, Cruise, Tilt, PWL, Heated Seats, Leather, CD, Stk. #T0004



**1999  
CARAVAN  
SE**

**\$418<sup>64</sup> mo.  
\$16,988**

Green, V6, Auto, Air, Cruise, Tilt, PWL, AM/FM Cassette Stk. #T0003



**1997  
CAVALIER  
ONLY  
51,781 kms**

**\$250<sup>43</sup> mo.  
\$9,988**

Green, 4 cyl., Auto, AM/FM/Cass. Stk. #P9308



**1998  
GRAND  
AM SE**

**\$273<sup>86</sup> mo.  
\$10,988**

Gold, V6, Auto, Air, PWL, Cruise, Tilt, AM/FM/Cass. Stk. #C0001



**1998  
VENTURE**

**\$389<sup>54</sup> mo.  
\$15,788**

Red, 6 cyl., Auto, Air, PL, Tilt, AM/FM/Cass. Stk. #P9304



**1999  
E150  
CARGO  
VAN**

**\$491<sup>35</sup> mo.  
\$19,988**

Red, V6, Auto, Air, AM/FM Stk. #T0002



**1999  
F250 4x4  
S/C SUPER  
DUTY**

**\$779<sup>42</sup> mo.  
\$31,988**

Blue, V10, Air, Cruise, Tilt, PWLM, Trailer Tow, ABS, AM/FM/CD/Cass. Stk. #T0001



**1998  
WINDSTAR  
GL**

**\$454<sup>99</sup> mo.  
\$18,488**

Blue, 6 cyl., Air, Auto, Cruise, PWL, Tilt, Alloy, ABS, AM/FM/Cass. Stk. #P9031



**1998  
F250  
XL**

**\$442<sup>88</sup> mo.  
\$17,988**

White, V8, Auto, Cruise, Tilt, AM/FM/Cass. Stk. #P9289



**1998  
F150  
XLS R/C**

**\$430<sup>76</sup> mo.  
\$17,488**

Red, V8, Auto, ABS, Cruise, Tilt, AM/FM/Cass. Stk. #P9255



**1998  
F150  
XLT**

**\$442<sup>88</sup> mo.  
\$17,988**

Red, V8, Auto, Air, Cruise, Tilt, Alloy, PWL/P Mir., AM/FM/Cass. Stk. #P9017



**1997  
SILVERADO**

**\$491<sup>35</sup> mo.  
\$19,988**

Green, V8, Auto, ABS, Air, Cruise, Tilt, PWLM, AM/FM/Cass/CD Stk. #P9271



**1997  
E250**

**\$411<sup>38</sup> mo.  
\$16,688**

White, V8, Auto, Air, ABS, AM/FM, Cargo Van Stk. #P9294



**1996  
RAM  
2500**

**\$370<sup>17</sup> mo.  
\$14,988**

White, V8, Auto, Air, Cargo Van Stk. #P9292



**1994  
RANGER**

**\$250<sup>43</sup> mo.  
\$9,988**

Silver, 6 cyl., Standard, Air, AM/FM Stk. #P9299



**1999  
TAURUS  
SE**

**\$370<sup>17</sup> mo.  
\$14,988**

Grey, V6, Auto, Air, PWLM, Cruise, Tilt, AM/FM/Cass., Alloy Stk. #P9252



**1999  
INTREPID**

**\$394<sup>40</sup> mo.  
\$15,988**

Grey, 6 cyl., Auto, Air, Cruise, Tilt, PWL, AM/FM/CD Stk. #P9233



**1998  
TAURUS SE  
ONLY  
46,672 kms**

**\$370<sup>17</sup> mo.  
\$14,988**

White, 6 cyl., Auto, Air, Cruise, PWL, Seat, Tilt, Alloy, AM/FM/Cass/ Stk. #P9064



**1998  
SUNFIRE  
GT**

**\$321<sup>69</sup> mo.  
\$12,988**

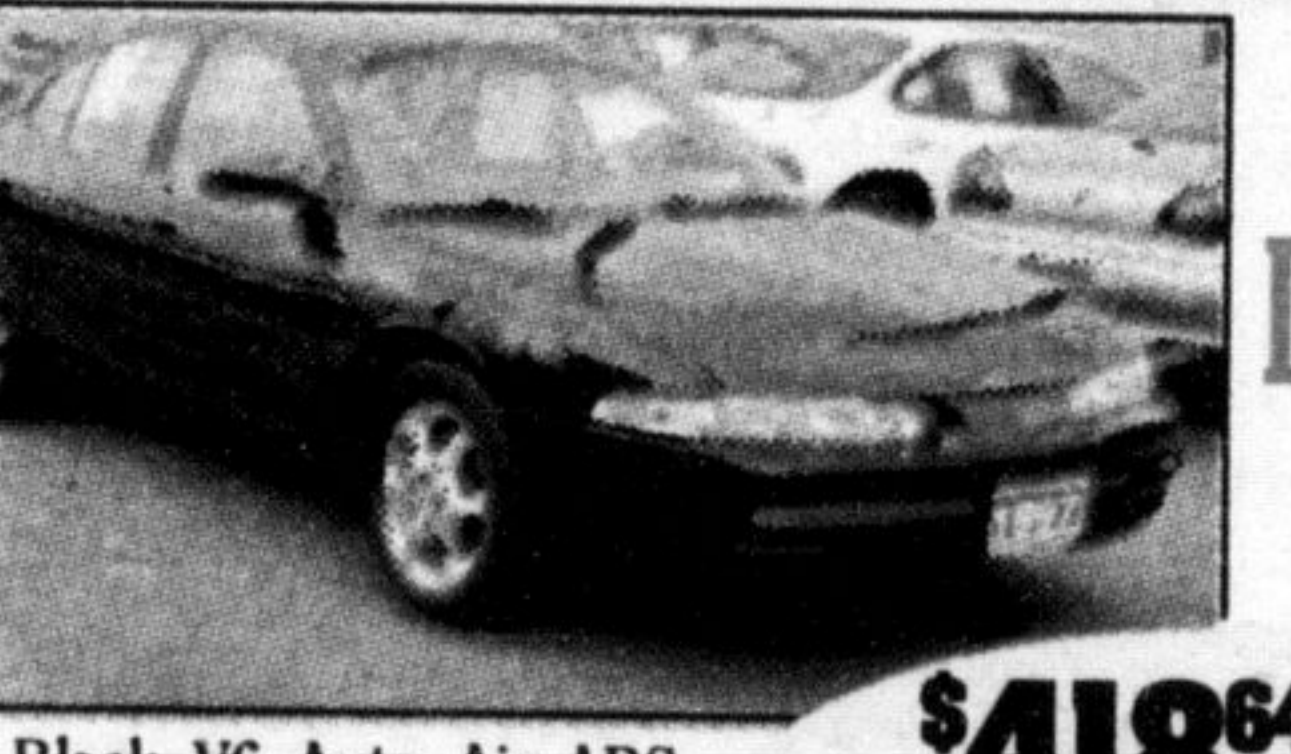
Green, 4 cyl., Auto, ABS, Air, Cruise, Tilt, PWLM, Moonroof, AM/FM/CD, Alloy, 2 Dr. Stk. #P9300



**1998  
REGAL  
LS**

**\$394<sup>40</sup> mo.  
\$15,988**

Black, 6 cyl., Auto, Air, PS, PM, Cruise, Tilt, ABS, AM/FM/CD/Cass., Alloy Stk. #P9248



**1998  
INTRIGUE  
SL**

**\$418<sup>64</sup> mo.  
\$16,988**

Black, V6, Auto, Air, ABS, PWLMS, Cruise, Tilt, Lthr, Alloy, AM/FM/Cass. Stk. #P9270



**1998  
ESCORT SE  
4 DR  
ONLY  
35,000 kms**

**\$315<sup>16</sup> mo.  
\$12,688**

White, 4 cyl., Auto, Air, Cruise, PWL, Tilt, AM/FM Stk. #P9576



**1998  
CIRRUS  
LX1**

**\$370<sup>17</sup> mo.  
\$14,988**

Gold, 6 cyl., Auto, Air, Cruise, Tilt, PWLM, ABS, AM/FM/Cass., Alloy Stk. #P9305



**1998  
CENTURY  
CUSTOM**

**\$354<sup>93</sup> mo.  
\$13,988**

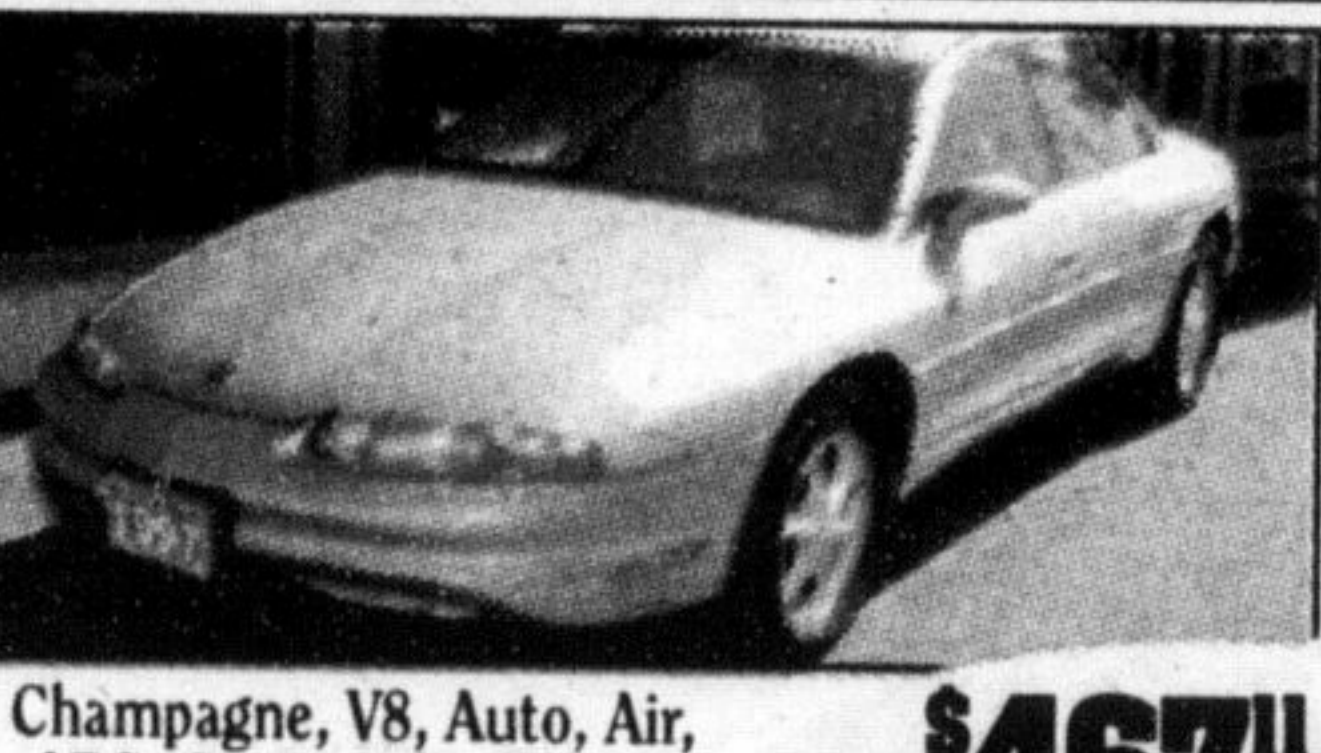
Green, V6, Auto, Air, PWL, Cruise, Tilt, AM/FM/Cass. Stk. #P9195



**1997  
SUNFIRE  
SE**

**\$273<sup>86</sup> mo.  
\$10,988**

Red, 4 cyl., Auto, Air, Cruise, AM/FM/CD Stk. #P9298



**1997  
AURORA**

**\$467<sup>11</sup> mo.  
\$18,988**

Champagne, V8, Auto, Air, ABS, Cruise, Tilt, PWLM, Leather, AM/FM/Cass/CD, Moonroof, Alloy Stk. #P9303



**1996  
SATURN  
SLI**

**\$250<sup>43</sup> mo.  
\$9,988**

Silver, 4 cyl., Auto, Air, Tilt, AM/FM/Cass. Stk. #P9277

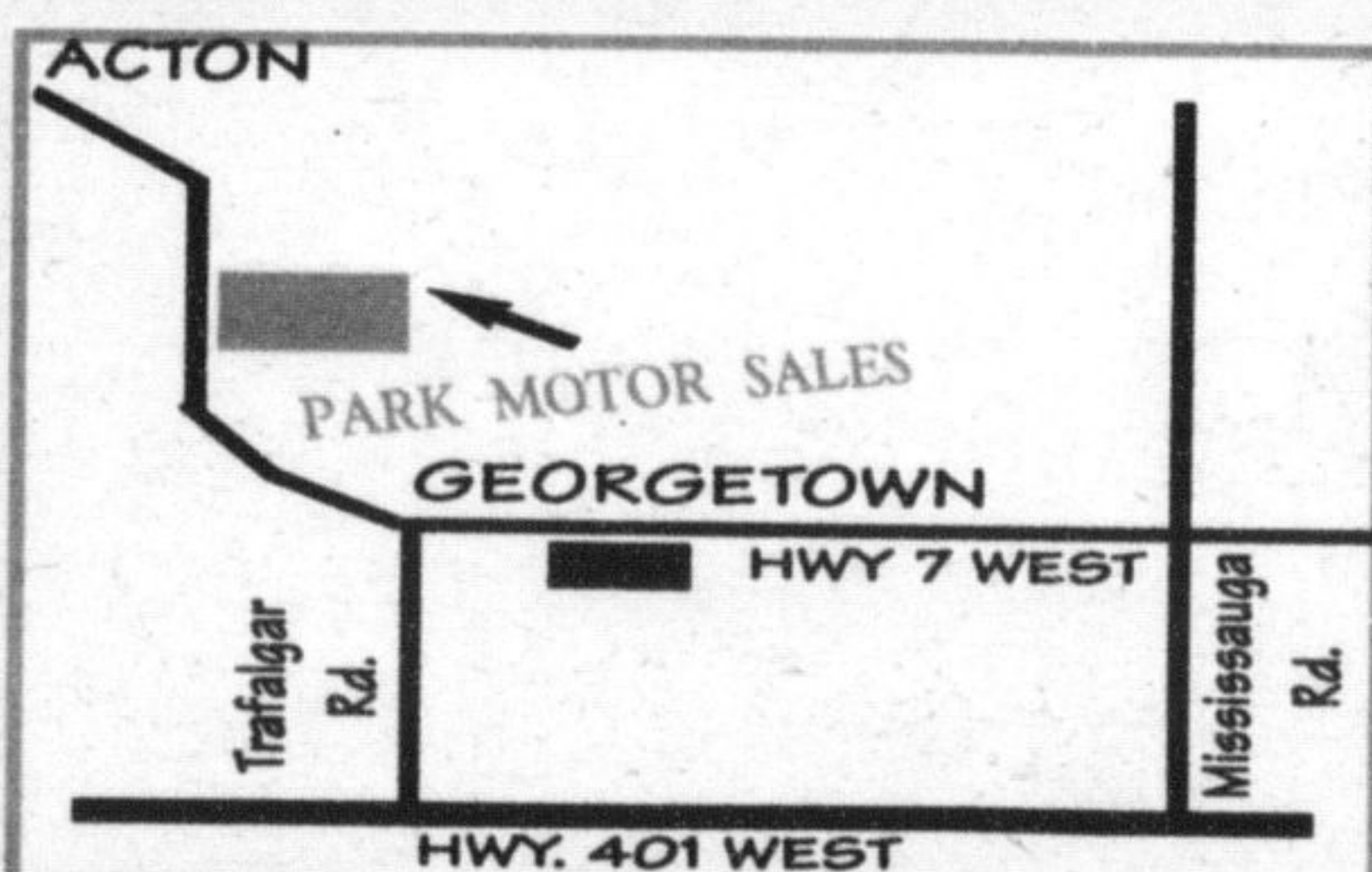


**1996  
LHS**

**\$394<sup>40</sup> mo.  
\$15,988**

Gray, V6, Auto, Air, PWL, Seat, Tilt, Cruise, Alloy, AM/FM/Cass/CD, Leather, Moonroof Stk. #P9183

Purchase financing payments DO include taxes and administration charges. Sale prices do NOT include taxes and administration charges. Payments are based on 9.5% annually for loans \$25,000 and over, 9.65% annually for loans \$15,000 to \$24,999 and 9.9% annually for loans less than \$15,000. Term is 60 months with Zero Down Payment. Eg. for \$15,000 @ 9.65% APR payment is \$316.23 per month for 60 months, C.O.B. is \$3,973.20 for a total of \$18,973.20. Subject to credit approval.



**On Highway #7 between Georgetown & Acton  
PARK MOTOR SALES**

**877-2261**

[parkim2@aztec-net.com](mailto:parkim2@aztec-net.com)

**HALTON HILLS  
BEST SELECTION  
OF QUALITY  
PRE-OWNED  
VEHICLES.**