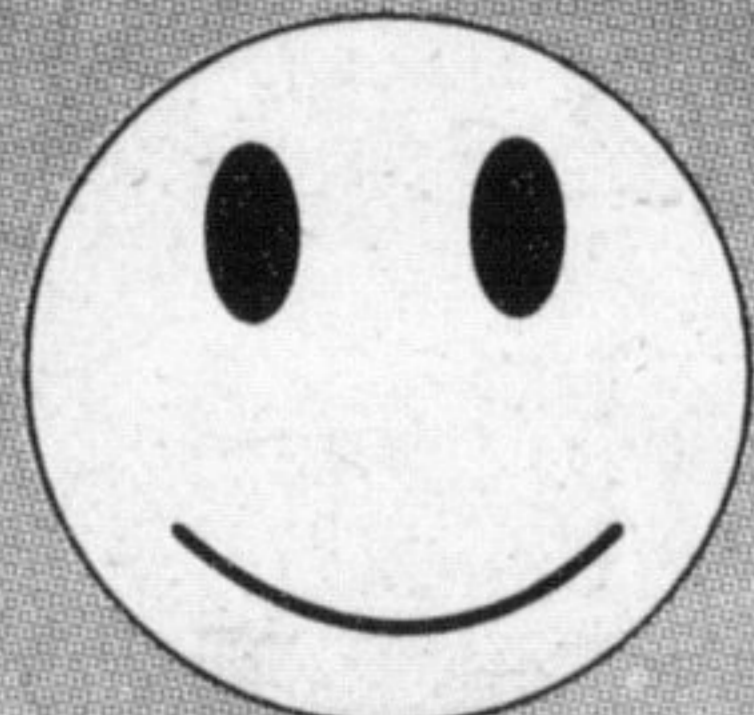




# Hunt Chrysler



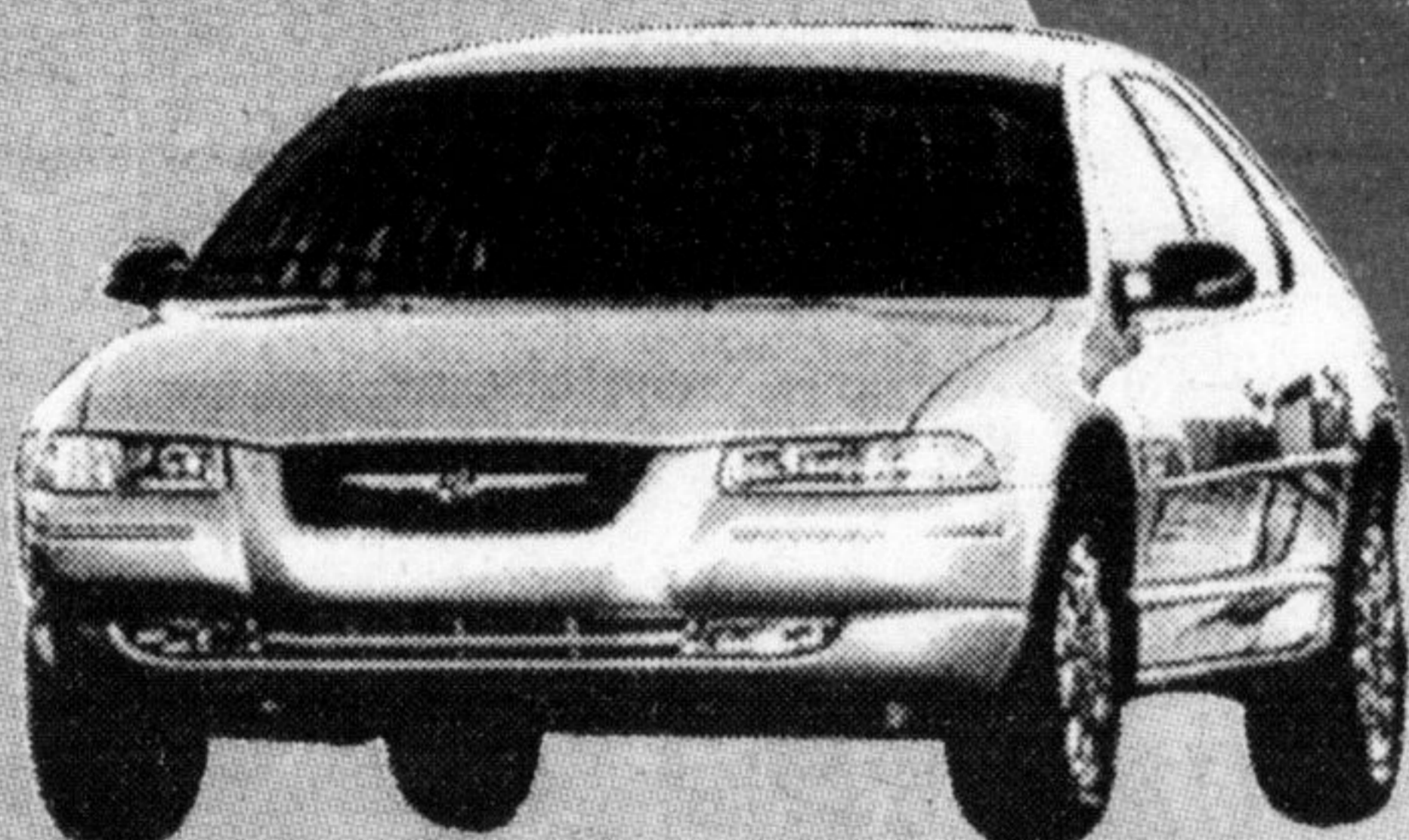
**You Win**



**Take Advantage**

# 0%

**2000 Cirrus  
48 mths\***



**2000 Neon  
60 mths\***



**PRE-OWNED SPECIALS**



**\$16,888**

2000, Auto, 4 Cyl, 110,000, P. Lacks, Approx 55,000 kms



**\$20,988**

2000, Auto, 4 Cyl, 110,000, P. Lacks, Approx 55,000 kms



**\$7,888**

2000, Auto, 4 Cyl, 110,000, P. Lacks, Approx 55,000 kms

## OTHER GREAT DEALS AT 0.8%

\* Special rates O.A.C. All Taxes & Lic. Fee extra.



**2000 Intrepid  
48 mths\***



**2000 Cherokee  
48 mths\***



**2000 Town & Country  
48 mths\***



**2000 Concorde  
48 mths\***



**2000 Dakota Quad  
48 mths\***



**2000 Caravan  
48 mths\***

### Hunt Chrysler Winter Specials



When you visit your Chrysler, Dodge, Jeep Retailer, your vehicle is with some of the most efficient technicians in the business. That's because, collectively, our technicians spend over 10,000 hours a year perfecting their skills with training specific to Chrysler, Dodge or Jeep vehicle, while utilizing the latest diagnostic equipment. This equipment is to technicians what an x-ray is to doctors. It allows them to see

inside your vehicle's essential operating systems and pinpoint any problems before even picking up a tool. And, they're designed specifically for DaimlerChrysler vehicles, which means when you take your vehicle in it will be properly diagnosed the first time around. It's our way of making sure the passion for performance that went into creating your vehicle goes into keeping it on the road.

#### Mopar/Autopar Brake Pads

When you replace your front-disc brake pads with Mopar/Autopar brake pads, we'll inspect all front brake components including, rotors, callipers, master cylinder, hardware and hoses. We'll even top up the master cylinder with fluid if necessary

**\$99<sup>95</sup>†**

† Machining or replacement of rotors and drums, if required, is extra. Some exclusions apply. See your retailer for details.

#### Fall Maintenance Package

When you bring your vehicle in for fall maintenance, we give you up to five litres of Mopar Oil, Mopar Oil Filter, and Lube (where applicable). Next, we rotate four tires, inspect the cooling system, all fluid levels, electrical system, front and rear brakes, plus the exhaust and suspension systems. Then we take it for a road test and report the results.

**\$39<sup>95</sup>**

#### Autopar 4SIV Tires

Autopar 4SIV All-Season Steel Radial Tires feature two steel belts, All-Weather M&S rated tread design for dependable traction and a smooth ride, and are "S" speed rated. We carry a complete line of Autopar and Michelin Tires - including winter tires.



13" tires from..... **\$62<sup>95</sup>\***  
14" tires from..... **\$76<sup>95</sup>\***  
15" tires from..... **\$82<sup>95</sup>\***

\* Includes installation, balancing extra.

**Your FIVE STAR Dealership**  
**Hunt Chrysler Jeep 876-2580**  
**500 Bronte St. S. Milton**  
Mon. to Thurs. 9-9 Fri. 9-6 Sat 9-5  
SERVICE: Tuesday till 8 pm and Saturday 8 am to Noon

		401
	Steeles Ave	Hwy 25
	Bronte St	Main St
<b>HUNT</b>	Derry Road	
<b>H</b>		Hwy 25