

The Canadian Champion

# AUTOTOWNE

Milton's Monthly Automotive Source for Buying, Selling and Service

**EAGLE RADIATOR**

20 Years Experience

- Recore • Repairs • Gas Tanks
- Heaters • Air Conditioning
- Heavy Equipment Trucks & Farm
- Drive-in Service

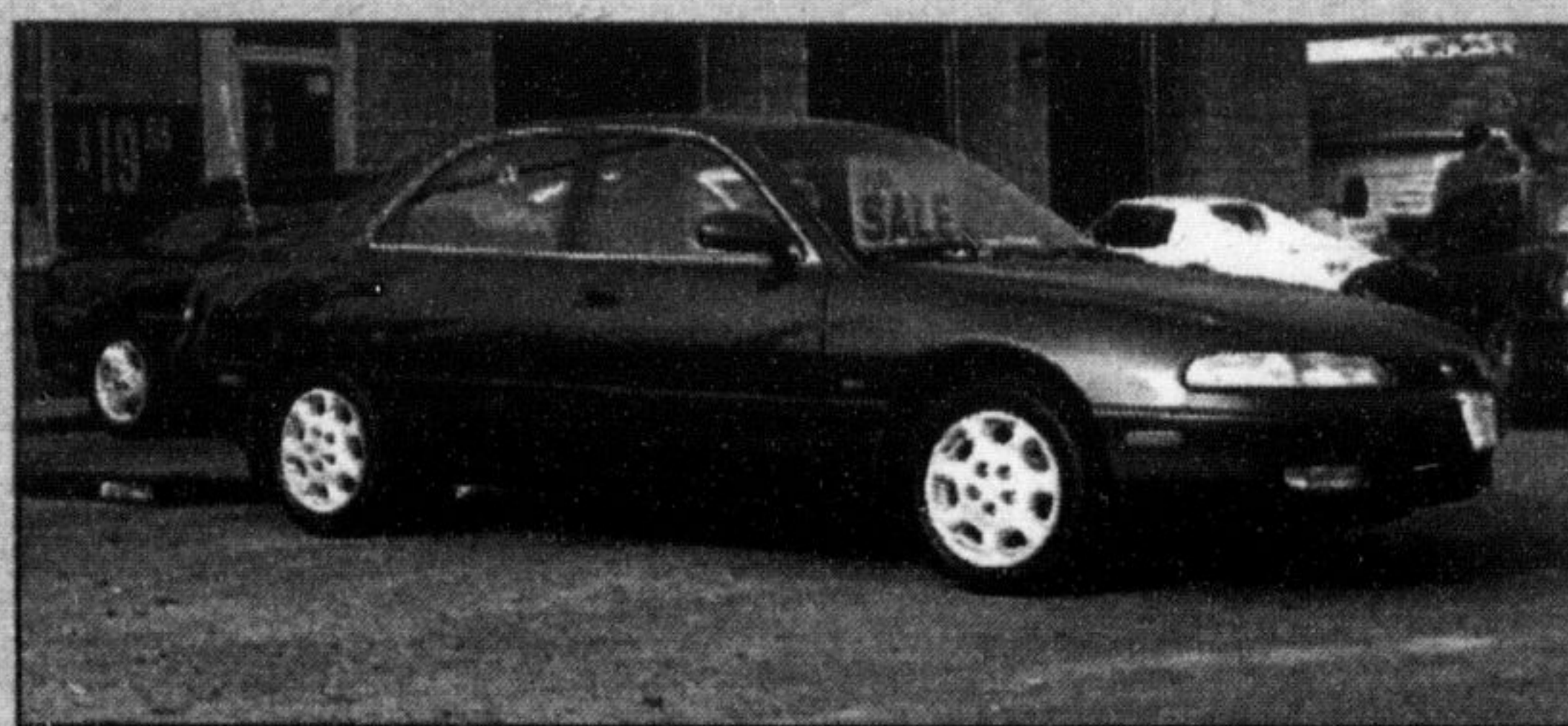
555 Main Street, Milton  
878-1980

**AUTOTOWNE BEST PICKS**



**1997 Pontiac Grand Am GT**  
Loaded, Sunroof, 91,000 kms

**AUTOPRO** West End Auto Service  
5 Main St. E. 878-5323



**1993 MAZDA 626**, Auto., leather interior, A/C, power sunroof, power windows, power locks, cruise, loaded.

**AUTOPRO** West End Auto Service  
5 Main St. E. 878-5323



**1992 HONDA CIVIC SI** 1.6L, 4 cyl., 5 spd., sunroof, excellent cond., warranty available, certified & e-tested. \$8,200 OBO.

**Supreme Auto Sales**  
645 Steeles Ave. E., Milton • 878-8883 • After Hours: 338-8862



**1988 ACURA INTEGRA LS**, 1.6L, 4 cyl., 5 spd., sunroof, air, great condition, warranty available, certified & e-tested. \$3,995 OBO.

**Supreme Auto Sales**  
645 Steeles Ave. E., Milton • 878-8883 • After Hours: 338-8862



**1995 CHEV LUMINA** Showroom condition, finished in dark red and gray, 1 year warranty.

**\$8,995**  
**slessor MOTORS** 388 Main St.  
875-0089



**1995 TAURUS GL WAGON** Fully loaded, Champagne with matching interior. Great family car. 6 month warranty.

**\$6,995**  
**slessor MOTORS** 388 Main St.  
875-0089

## How to get your car ready for winter driving

(NC)-Canada's cold winter weather conditions can wreak havoc on your car. Snow and ice covered roads can leave it helplessly spinning and sliding out of control. It's important to prepare yourself and your vehicle before you brave these dreaded driving conditions.

To help you get through the worst of winter we've prepared these simple common sense precautions for before and after you take the wheel to help keep your family safe this season.

### First make sure your car is in good condition

This means everything from windshield wipers to brakes to proper maintenance. Most importantly, prepare for the onslaught of winter by having the right tires. Winter tires are your best option to maximize driving safety in all possible winter conditions. New advances in winter tire technology have helped to develop high-traction tires such as the Arctic Alpin from Michelin. "This ultimate winter traction radial is highly designed to ensure the same confidence on ice and snow as one would get from riding on Michelin tires the rest of the year," said Gordon Sadler, Brand Manager at Michelin.

### What to carry in your car

Make sure to bring along a winter survival kit. This should include an ice scraper and brush, a folding shovel, booster cables, flashlight, flares, blankets, a candle and a supply of non-perishable foods. It's also important to wear warm non-constricting clothes, boots and a cell phone would be a good investment.

### Before you drive off

Start the digging out process by starting your vehicle to get the engine warm. Get rid of all ice and snow on windows, mirrors, and lights. When the snow is cleared and the vehicle is warm, make sure to pull away slowly so you don't get stuck.

### Easy does it on the road

If the road is slippery, reduce speed and leave more space between you and the car ahead. Accelerate gently so you don't spin the wheels, and avoid abrupt steering maneuvers. When braking with

*Continued on page 23*

CANADIAN TIRE

# Auto Service

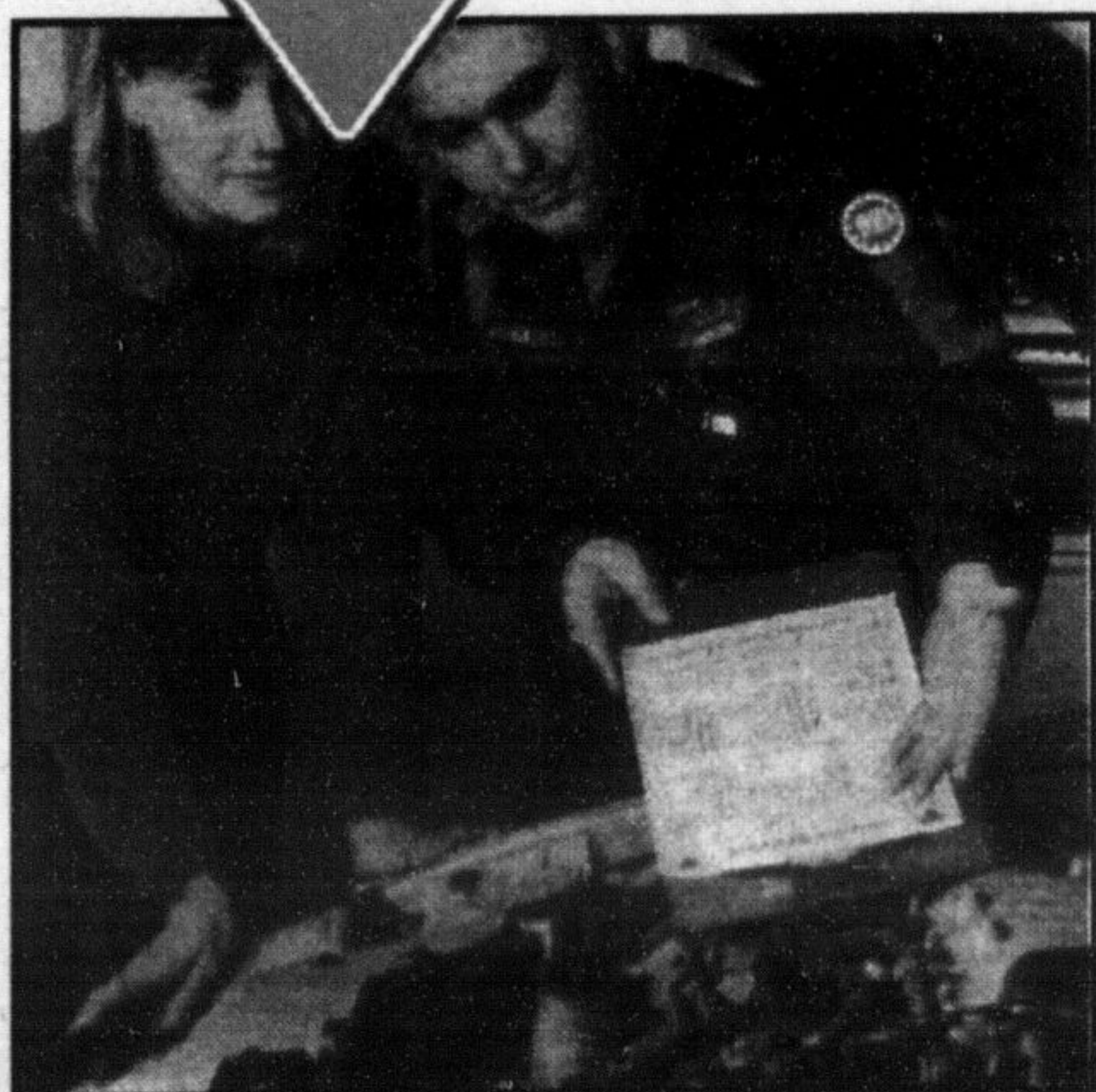
GET READY FOR WINTER

**29.95**  
Most Vehicles

- Lube, oil and filter (up to 5 litres of Quaker State Oil)
- Rotate 4 tires
- Check exhaust, brakes, cooling, electrical, top up all fluid levels and more

Fees for used automotive product disposal may apply. See details in store.

Available Until Nov.18/00



**BONUS**

Emergency Road Kit with 'Get Ready for Winter' service. Includes: emergency blanket, flashlight, emergency rain poncho, 19-piece first aid kit, more!

(Regular Retail Value of 9.99) 09-1607-4



For the air we breathe\*

\*An official mark of the Province of Ontario Used under licence

**MILTON**  
Hwy. 25 South of 401  
**878-8393**