

Dateline

• from **DATeline** on page 12 at the Boyne Community Centre. There will be baking, crafts and tea tables.

Sunday Oct. 22

The Halton-Peel branch of the **Ontario Genealogical Society** meets at the Chinguacousy Branch Library, lower level, 150 Central Park Drive at 2 p.m. Visitors are welcome. Lawrence R. Nicoll speaks about computers.

Monday Oct. 23

Learn to write a resumé, cover letter and contact card at the Milton Human Resource Centre, 310 Main St. suite 106. For details call 876-9828.

Wellspring Halton-Peel, 2545 Sixth Line, in Oakville, offers a drop-in peer support group from 10 a.m. to 2 p.m., reiki from 9:30

a.m. to noon and a drop-in peer support group from 6 p.m. to 8:30 p.m.

Tuesday Oct. 24

The **Milton Breast Cancer Support Group** meets at the Halton Regional Police station, 490 Childs Dr. Rae Baron, a registered massage therapist, speaks at the meeting. For more information, call Carol Kerklan at 878-0655.

The **Canadian Calorie Counters**, which provides information and support during weight loss, meets from 6:30 to 8 p.m. at the Milton Community Resource Centre, 917 Nipissing Rd. For details call Thomasena at 878-5322 or Lenore at 878-0622.

Five Senses hosts a seminar to teach people how to accessorize their homes from 7 to 9 p.m. in the President's room at the Optimist

Centre on Commercial Street. Allen Glover, account executive from Simmons Canada will speak at the seminar. Tickets are \$20 and can be purchased at M&M Meats on Main Street or by calling 336-8802. Proceeds from the event go to the Milton Optimist Club. There will be gifts and door prizes.

Developmentally challenged learners who are independent to the extent that they can profit from instruction can learn English, math and independent skills from 6:30 to 8:30 p.m. at Bishop Reding High School. For details call Helen at 257-3688.

The Milton Community Resource Centre, 917 Nipissing Rd., offers **Introduction to Reflexology** at 7 p.m. Call 876-1244, ext. 12, for details.

College Day at Sheridan College

Representatives from institutions across the province will be on hand at Sheridan College this Wednesday for College Day.

The event gives those considering post secondary education a chance to ask questions to representatives of the various colleges.

College Day runs from 9 a.m. to 2 p.m. in the athletic complex. Sheridan College is located at 1430 Trafalgar Rd. in Oakville.



CORRECTION NOTICE

The advertisement which appeared in the Friday October 13, 2000 Canadian Champion stated that Lynda had lost 15 1/4". Lynda successfully lost 58 1/4" in total!

We apologize for this error.

Got a hot scoop? We'd love to hear your story ideas. Call 878-2341, ext. 234.



BEVERLY HILLS

Weight Management & Nutrition Centres

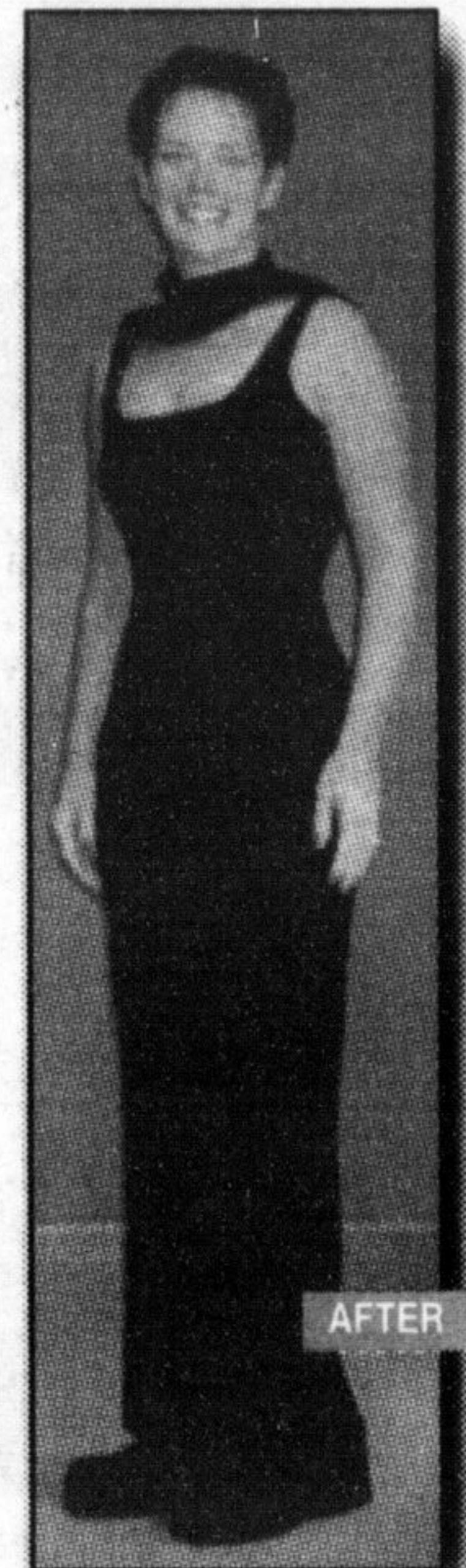
Dreaming of a new lifestyle?

Lynda has achieved her new lifestyle by losing . .



**60 lbs.
12% Body Fat
58 1/4 inches!**

Reduce 1 to 2 sizes every 5 weeks **Guaranteed**



Enroll now with our Fall Special

- Registered Nutritional Consultant on Staff
- One on one Support & Service
- Guaranteed Results
- Focusing on a Lifestyle Change

50% OFF enrollment fees plus 6 weeks free weight loss.*

Call for a **FREE** Consultation

550 Ontario St. S. Unit 18 875-2889

*Based on Full program. Excludes product. Expires Oct. 30/00



And you thought free stuff only came in cereal boxes.

The Colonel's Dozen is back for \$12.99, with a free sandwich too!

Pick up the Colonel's Dozen, 12 pieces of mouth-watering chicken, and receive a free sandwich coupon*
*redeemable on your next visit



We do chicken right.®

The Cats are Coming!

For 5 Days ONLY
Oct 24 to 28

A wildlife Exhibit by Jean-Louis J'Euuyer.
Plus Nature's Gentler Creatures
See:

Black Leopard, African Leopard, Manchuria Leopard, Black Jaguar, Ocelot, Bobcat, Canada Lynx, European Lynx, African Lynx, Siberian Lynx, Siberian Tiger, Genet, Caracal, Sitka Deer, Spotted Fallow Deer, Brown Fallow Deer, Axis Deer, Roe Deer, Blacktail Deer, Whitetail Deer, Coue's Deer, Muntjack, Pere David Deer, Haddon Dog, Chacal, Mule Deer

For more information or to arrange group tours (youth groups, students, seniors etc.)
Call the Mall Office by Oct. 23rd

55 Ontario St. S.

878-3900

MILTON MALL

Mon.-Fri. 9:30-9:00

Sat. 9:30-6:00

Sun. 12:00-5:00

Escarpment Country™ Tourism Partner