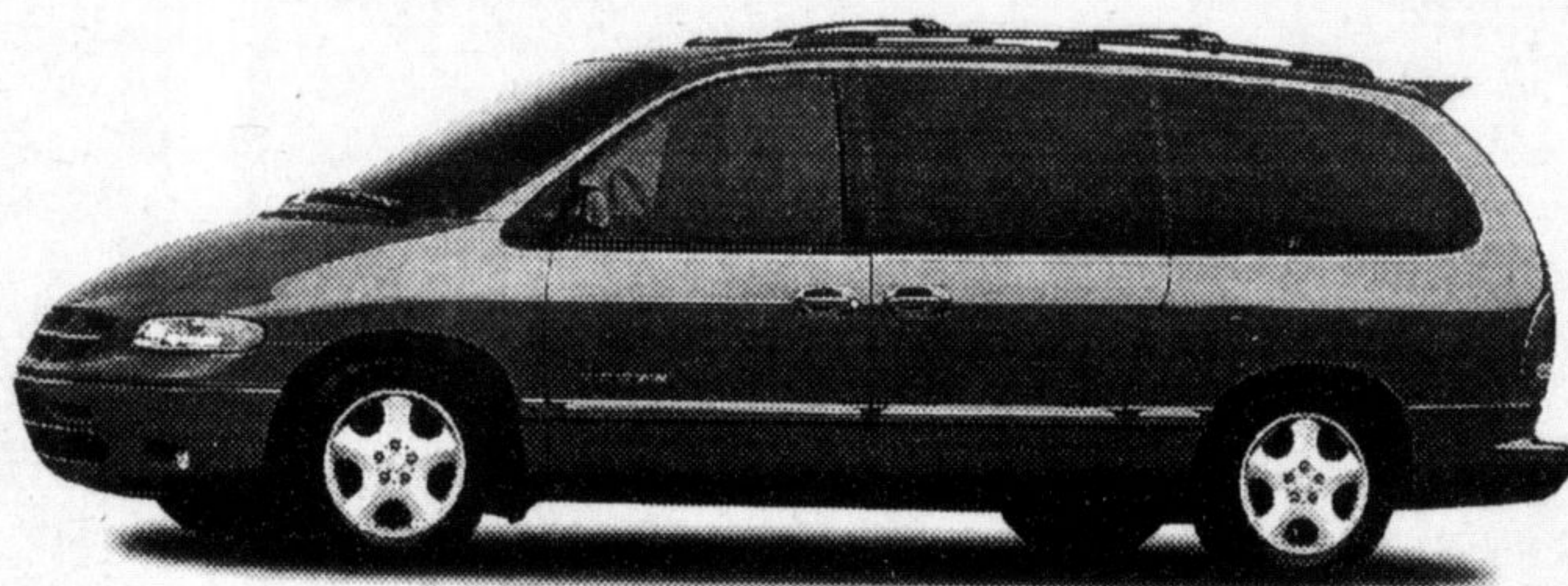


LAST CHANCE AT 0%

EXPIRES THIS SATURDAY AT 5:00 PM

**HURRY IN TO MILTON CHRYSLER
BECAUSE 0% FINANCING ON CARAVAN,
GRAND CARAVAN'S & TOWN & COUNTRY
IS OVER THIS
SATURDAY SEPT 30/00
AT 5:00 PM.**



**0%* CHRYSLER FINANCE
RATE UP TO 48 MTHS
EXPIRES SEPT 30/00**

**DOOR
CRASHERS**

**BRAND NEW 2000
CHRYSLER TOWN & COUNTRY LTD.**

**0% 48 MTH
CHRYSLER
FINANCE RATE
AVAIL.**

MSRP \$44,985



**SALE
PRICE**

\$36,499†

ST# 580659

**DOOR
CRASHERS**

**BRAND NEW 2000
CHRYSLER CIRRUS LX
(model not as exactly shown)**

**0.8% 48 MTH
CHRYSLER
FINANCE RATE
AVAIL.**



Final Sale
CASH PRICE

\$17,999†

St# 283598

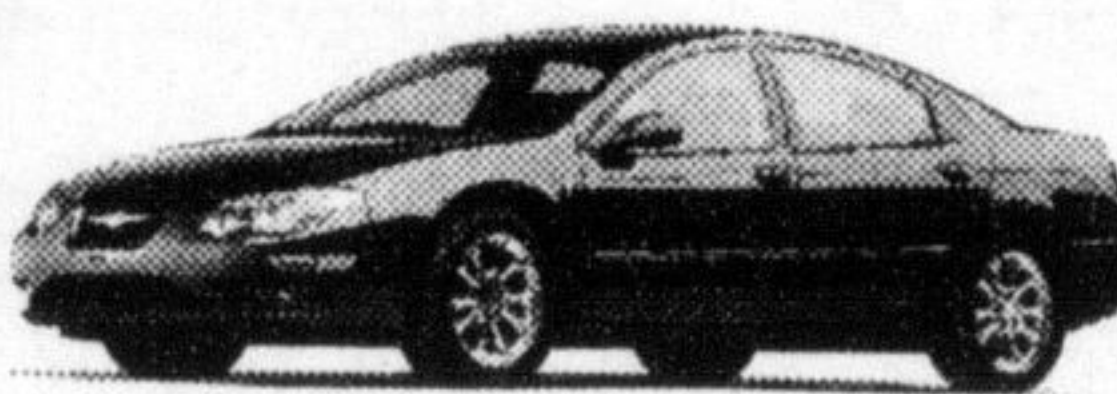
**0%* 2000 NEON
UP TO 60 MTHS**



4.8%* 2000 JEEP TJ
**CHRYSLER
FIN. RATE UP
TO 48 MTHS**



**2000 CHRYSLER
300M**



2000 CHRYSLER CIRRUS 2000 CHRYSLER INTREPID



2000 CONCORDE

**2000 DAKOTA
ALL MODELS**



2000 RAM PICK-UP

2000 DURANGO

2000 JEEP CHEROKEE

2000 JEEP GRAND CHEROKEE



EXC. V10 &
DIESEL



0 8%*

**CHRYSLER
FIN. RATE UP
TO 48 MTHS**



Milton
CHRYSLER • DODGE • JEEP
"WE SELL SATISFACTION"

878-8877

**BETTER SELECTION
BETTER SERVICE
BETTER PRICE**

81 ONTARIO ST. N. MILTON
one block north of the Milton Mall

*SPECIAL FINANCE RATES ARE AVAILABLE IN LIEU OF RDA CASH BACK OR SPECIAL LEASE RATES. OAC. OFFER EXPIRES ON OCT 5, 00. MUST BE FROM DEALERS STOCK. SEE MILTON CHRYSLER FOR DETAILS.
†SALE PRICES INCLUDE RDA CASHBACK, ADD FOR FREIGHT, ADMIN. FEE, APPLICABLE TAXES + LICENSE FEE. CIRRUS QUALIFIES FOR SPECIAL LEASE & FINANCE RATES IN LIEU OF RDA CASH BACK

Residents speak their minds on housing proposal

By IRENE GENTLE
The Champion

Traffic and safety concerns were pitted against the desire of seniors to stay in their own community at the public portion of an Ontario Municipal Board hearing (OMB) Wednesday.

The ongoing hearing revolves around a controversial development proposal at the E.C. Drury complex.

Two separate public meetings were held, one mainly aimed at seniors and the other at residents who are concerned about the proposal.

If approved, it could bring 189 geared-to-seniors, single detached condominiums on about 33 acres of land that many currently consider a park.

The seniors appeared at Town Hall in the morning armed with short, concise and clear presentations.

The majority were in favour of the development, saying a scarcity of seniors housing is driving them out of town.

"I believe there's a need for seniors housing as proposed in this development," said Charles Thomson. "The location is excellent. Let's make it possible for our seniors to continue living in the core area of their town."

Speaking against the proposal was senior Ron McNeil.

He said the site was all wrong for the elderly, who would be better off living in a development beside the hospital.

But Freda Strain said seniors want to live in the heart of town, where amenities are within walking distance.

"Please, please don't delay the development any longer," she said.

"We want to be able to enjoy our senior moments."

Others, such as Jo Axford, argued that the woodlot on the site shouldn't be razed to accommodate seniors.

"I rather resent being used to take a piece of this delightful piece of land and say it's for seniors," she said. "We don't need to cut down trees to make a concrete desert in Milton."

But when asked if she was aware 80 per cent of the current woodlot would be saved under the proposal, Ms Axford appeared surprised.

The proposal has outraged nearby residents, who were given the chance to express themselves at a public meeting Wednesday night at E.C. Drury High School.

Presiding over the public sessions and the hearing is W.R.F. Watty, who noted he doesn't put much faith in petitions.

"I've signed petitions in my life just to get someone away from my front door," he said.

The evening meeting drew a crowd of about 300, with close to 100 of those being deaf students, provincial school staff and parents.

A tight ship was run by Mr. Watty, who asked those attending both sessions to be succinct.

"The evidence is what is said and how
• see TRAFFIC on page 16