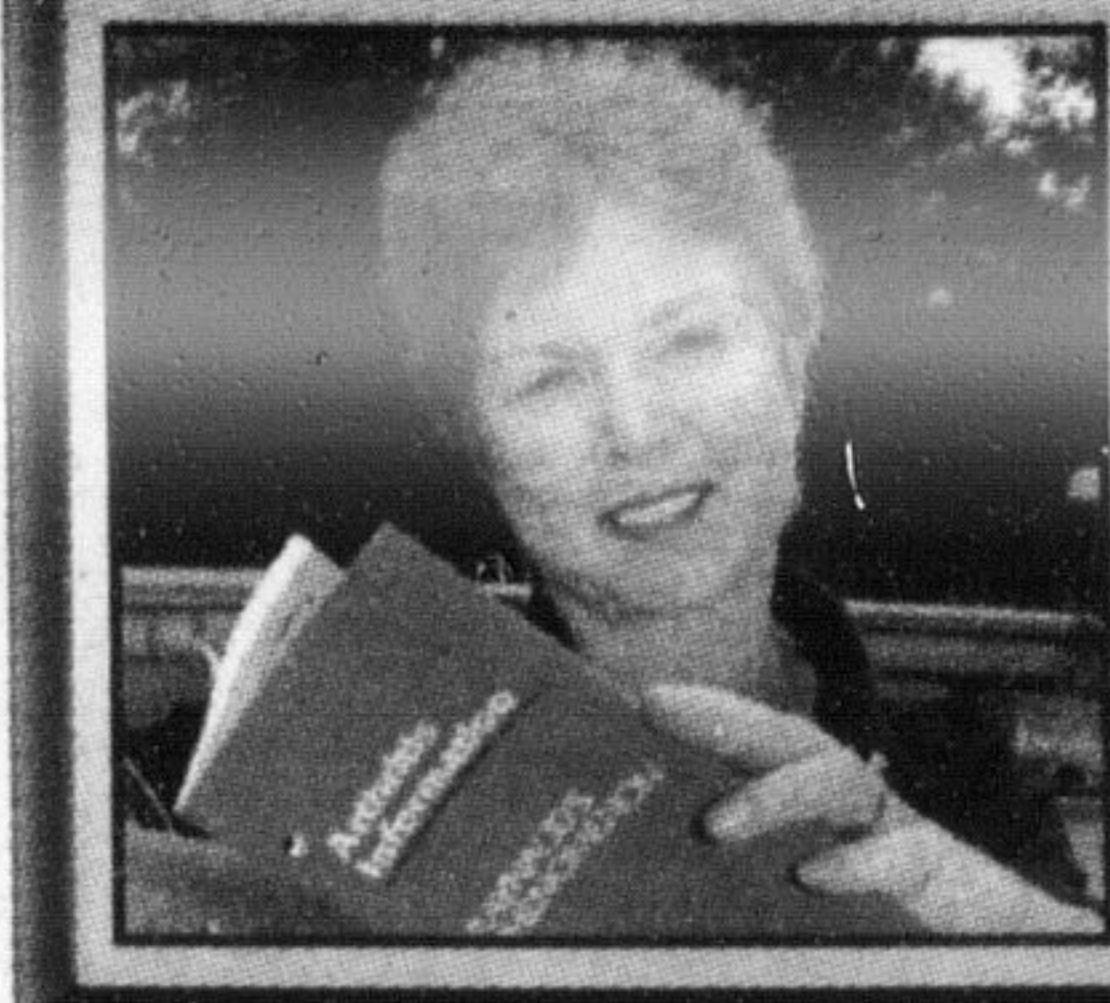
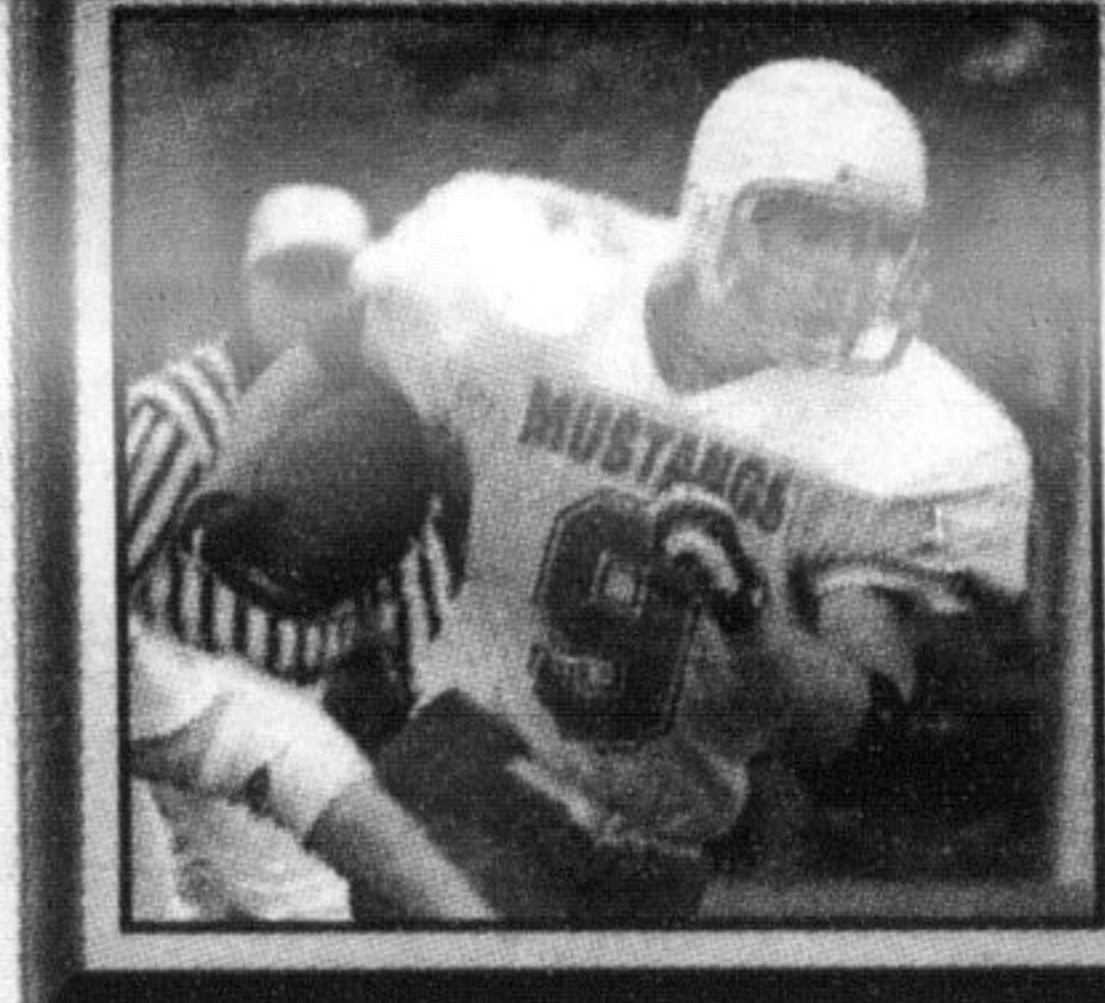


Mega-jail system won't be perfect but better: Sampson
See page 11



Coping with lupus — the disease of a thousand faces
See page 8



Mustangs hampered by injuries
See page 23

Milton Fall Fair still a success despite rainy weather
See page 13

The Canadian Champion

Milton's Choice Since 1860

FIFTH WHEEL TRUCK STOPS
Voted #1 for Best Breakfast
40 Chisholm Dr. 878-8441

A Metroland Community Newspaper

Vol. 141 No. 56

Tuesday, September 26, 2000

48 Pages

\$1.00 (GST included)

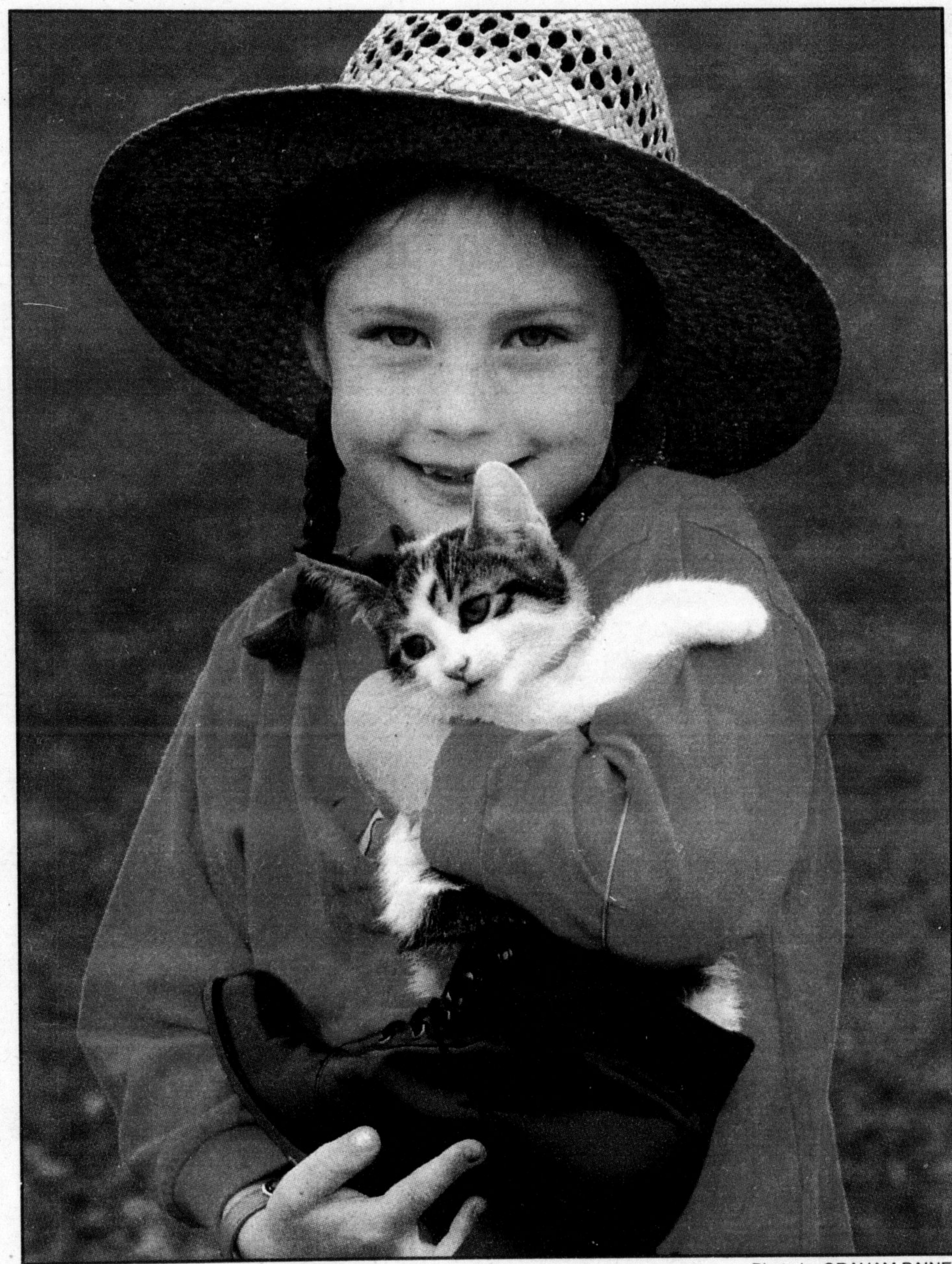


Photo by GRAHAM PAINE

Puss 'N' Boots

Danielle Kelly, 7, shows her 11-week-old kitten Lily in 'The Cat in a Boot' category of the Milton Fall Fair's children's pet show. See story and more photos from the fair on page 13.

Fed-up truckers stage gas protest on Highway 401

By LISA CARTWRIGHT
The Champion

Close to 100 trucks were lined up at the weigh station on Hwy. 401 east near James Snow Parkway Thursday and through the weekend to protest axle weight restrictions and high gas prices.

Danny Picot, a company driver for

Five-year-old struck and killed by car

Tragedy struck north Milton Sunday evening when a five-year-old girl was hit by a car on Guelph Line and later died in hospital.

Halton police have so far determined that the victim, Sarah Boucher, had been with a group of children on the east side of Guelph Line in Brookville prior to being struck.

The girl was hit in the northbound lane as she attempted to cross over to the west side of the road, police said.

She was taken by ambulance to the hospital, but died at 2:30 a.m. Monday.

The northbound vehicle was driven by Diane Chircop, 26, of Rockwood.

Anyone who witnessed the tragedy is asked to call Det. Const. Steve Martin at 878-5511, ext. 5169, or Crime Stoppers at 825-8477.

Petrella in Brampton, said the protest started because of axle weight, but freight truckers have joined in due to the high price of fuel.

It's the battle over gas prices that has seen the most publicity in recent weeks as truckers across the world have stopped their rigs in protest.

Mr. Picot said truckers can only put a certain amount of weight on each axle. Truckers found to have more than the limit must shovel out their load until they meet the weight restrictions.

They're also fined, he said. Fines range in price, but Mr. Picot said he has seen fines for as much as \$800.

Const. Brian Hackett, spokesperson for the Port Credit OPP, said truckers were scheduled to meet with the Ministry of Transportation about their complaints, but he didn't know the outcome.

• see TRAFFIC on page 5

INSIDE

Comment 6
Dateline 19
Classified 26-29

TUESDAY INSERTS

- Bayer/Myoflex • Roto Static*
- Fortinos* • Cashway
- Swiss Chalet
- *Selected areas only

TIP OF THE MONTH:

Fleas are small blood sucking insects that feed on the blood of cats, dogs and man causing irritation, skin disease and allergic reactions. Fleas transmit tapeworms to your pet. Flea season in Southern Ontario begins when the weather gets warm and lasts until the second hard frost in November. The peak months are August, September and October. Yet fleas may live in our homes all year round. New innovations in flea control have made flea collars and sprays practically obsolete. Come and visit us for the most up to date and effective methods of flea control.

DON'T WAIT UNTIL IT'S TOO LATE.
AN OUNCE OF PREVENTION IS WORTH A POUND OF CURE.

MAPLEWOOD VETERINARY HOSPITAL

"26 YEARS OF TRADITION & AFFORDABLE EXCELLENCE"

Medical and Surgical Care

Pet Foods & Pet Store Supplies

After Hours & Emergency Service Available

Boarding and Grooming

House Calls / Pick-up and Delivery

Pet Daycare Available

NEW CLIENTS ARE ALWAYS WELCOME

Serving the Milton area for 26 years

491 Main Street East, Milton

(905) 878-8848