

# MILTON CHRYSLER BRINGS YOU 3 ALL NEW MODELS FOR 2001

**2001 CHRYSLER P/T CRUISER**

**COME & GET 'M!**  
4 AVAILABLE

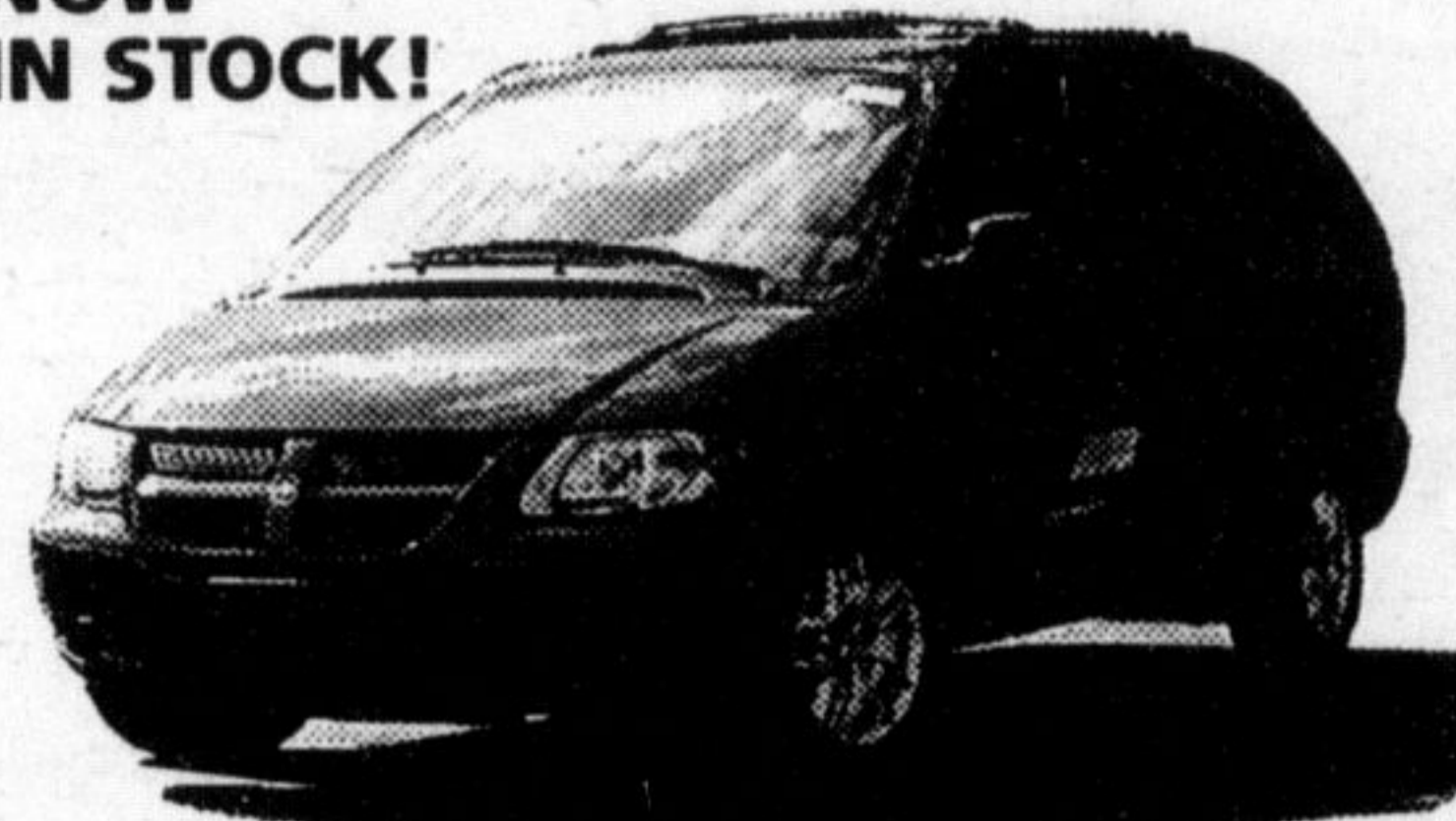
NEW ALLOCATION AVAILABLE TODAY.



**5th GENERATION 2001 MAGICWAGONS**

18 AVAILABLE

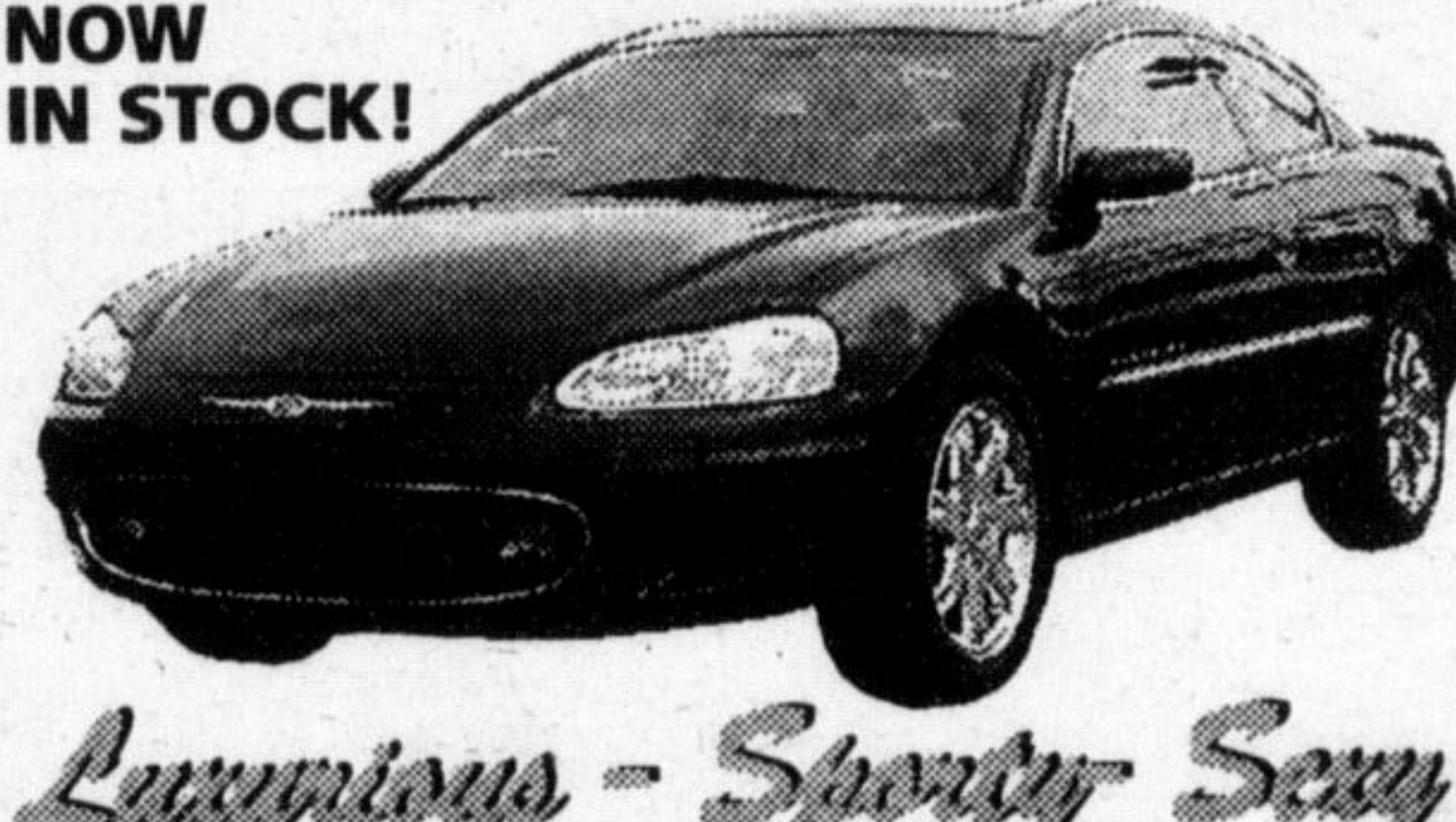
NOW IN STOCK!



**2001 CHRYSLER SEBRING COUPE**

4 AVAILABLE

NOW IN STOCK!



*Luxurious - Sporty - Sexy*

"Morale is extremely high right now. Everybody's pleased and looking forward to working with the Region."

GORD ARMES

## Paramedics sign new collective agreement

By IRENE GENTLE  
*The Champion*

A collective agreement has been reached between the newly-formed Halton Region Emergency Medical Service and its current employer.

The agreement made between the Ontario Public Service Employees Union (OPSEU) and Halton Region, covers more than 100 paramedics labouring in the newly-downloaded, Regionally-run ambulance service.

It was hammered out after about a year of negotiations.

"Morale is extremely high right now," said Gord Armes, president of OPSEU's Local 207. "Everybody's pleased and looking forward to working with the Region."

The new contract spans 28 months and provides competitive pay rates for workers while recognizing the years of employment in former ambulance services.

Holidays and benefits have also been largely carried over.

"It has been great. We're very pleased with the way the Region has treated us," said Mr. Armes.

"By keeping experienced, trained professionals on the job, the collective agreement has guaranteed a smooth transition to the era of downloaded ambulance service."

Operation of the ambulance service switched to Regional command August 16, and went without a hitch, said Mr. Armes.

Public recognition has been slow in coming because the new uniforms and vehicle crests aren't yet in place.

But paramedics themselves are pleased with the change, he added.

"This arrangement gives municipalities the ability to keep improving ambulance services by focusing resources on saving lives," said Mr. Armes.

"The service is more accountable now, and we're more accountable to the Region, which I think is better."

And with local taxpayers largely footing the bill, the service will be held to a high standard, he said.

Though the paramedics are Regional employees, the agreement was achieved through a separate bargaining unit.

"Having a stand-alone bargaining unit made all the difference. We'll be dealing with our issues only," said Mr. Armes.

"It showed from the start that the Region respected and recognized the special and critical nature of the service we provide."

It also ensured bargaining doesn't get bogged down by the varying needs of other Regional employees.

# MILTON CHRYSLER'S GOLD MEDAL CLEAROUT

**2000 NEON**

21 IN STOCK



**2000 DODGE RAM PICK-UPS**

5 IN STOCK



**2000 DODGE CARAVAN & GRAND CARAVAN**

65 IN STOCK



**0% FINANCE RATE UP TO 60 MTHS**

**0.8% FIN. RATE UP TO 48 MTHS. OR \$3000 CASH BACK**  
EXL. V10 & DIESEL

**0.8% FIN. RATE UP TO 36 MTHS. OR \$2000 CASH BACK**

**2000 JEEP GRAND CHEROKEE**  
4 IN STOCK  
**0.8% FIN. RATE UP TO 48 MTHS**  
OR  
**\$2500 CASH BACK**

**2000 DODGE DURANGO**  
1 LEFT  
**1.8% FIN. RATE UP TO 48 MTHS**  
OR  
**\$2500 CASH BACK**

**2000 CHRYSLER CIRRUS**  
11 IN STOCK  
**0.8% FIN. RATE UP TO 48 MTHS**  
OR  
**\$2000 CASH BACK**

**2000 CHRYSLER 300M**  
8 IN STOCK  
**0.8% FIN. RATE UP TO 48 MTHS**  
OR  
**\$2000 CASH BACK**

**2000 JEEP CHEROKEE**  
5 IN STOCK  
**0.8% FIN. RATE UP TO 48 MTHS**  
OR  
**\$2500 CASH BACK**

**2000 DAKOTA REG & CLUB CAB**  
2 IN STOCK  
**1.8% FIN. RATE UP TO 48 MTHS**  
OR  
**\$1500 CASH BACK**

**2000 CHRYSLER INTREPID**  
3 IN STOCK  
**0.8% FIN. RATE UP TO 48 MTHS**  
OR  
**\$2000 CASH BACK**

**2000 CHRYSLER CONCORD**  
**0.8% FIN. RATE UP TO 48 MTHS**  
OR  
**\$2000 CASH BACK**

**2000 JEEP TJ**  
2 IN STOCK  
**4.8% FIN. RATE UP TO 48 MTHS**  
OR  
**\$1250 CASH BACK**

**2000 DAKOTA QUAD CAB**  
6 IN STOCK  
**\$1000 CASH BACK**

**2000 CHRYSLER SEBRING COUPE & CONVERTABLE**  
**\$1000 CASH BACK**

**2000 CHRYSLER TOWN & COUNTRY**  
4 IN STOCK  
**1.8% FIN. RATE UP TO 48 MTHS**  
OR  
**\$2000 CASH BACK**



**MILTON**  
CHRYSLER • DODGE • JEEP

"THE LITTLE PROFIT DEALER"

**878-8877**

**BETTER SELECTION  
BETTER SERVICE  
BETTER PRICE**

**81 ONTARIO ST. N. MILTON**  
one block north of the Milton Mall

\*Special Finance Rates are available in lieu of RDA Cash Back or Special Lease Rates. OAC. See Milton Chrysler for details.