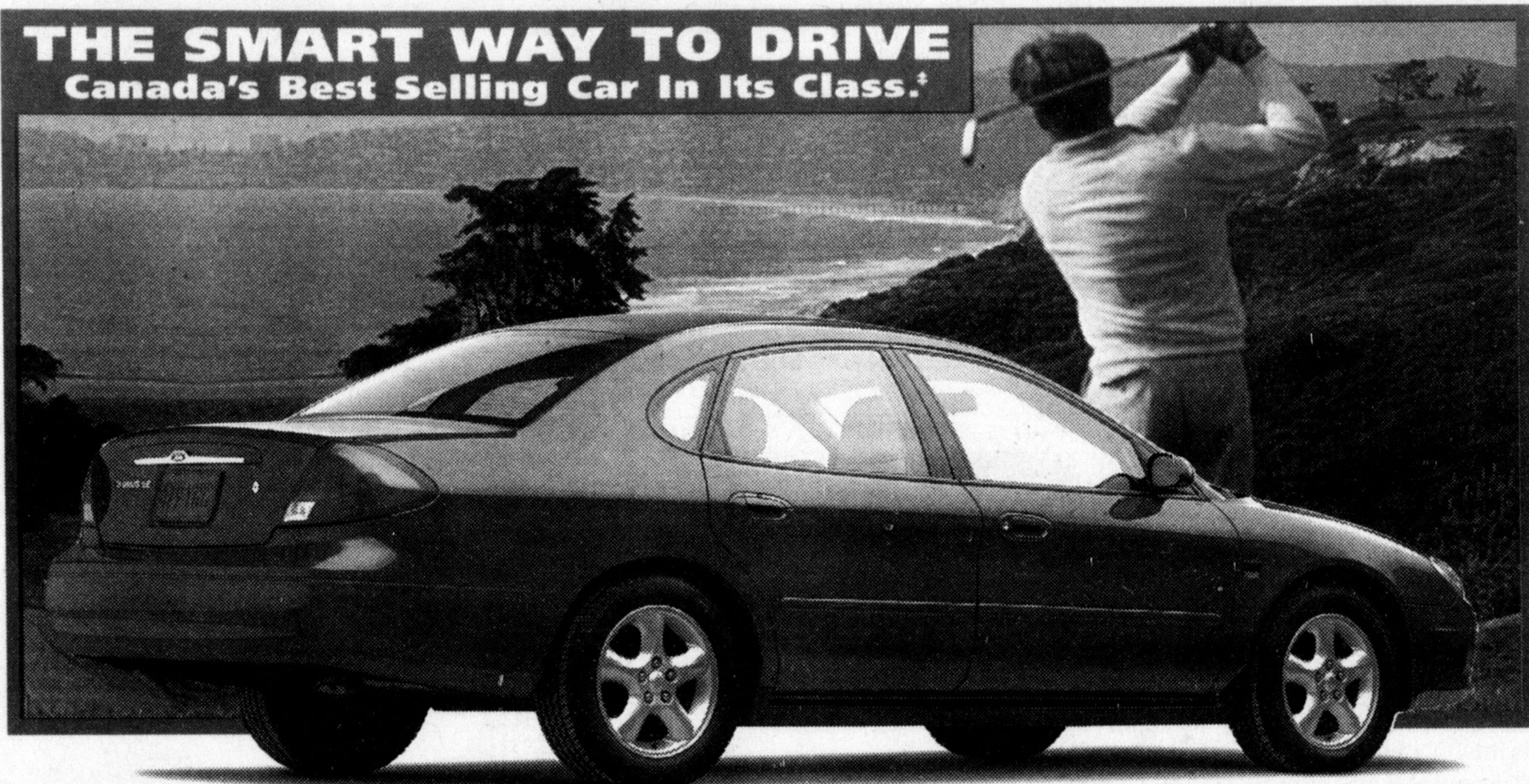


THE REDESIGNED 2000 FORD TAURUS

THE SMART WAY TO DRIVE
Canada's Best Selling Car In Its Class.†



No other passenger car in the world has power adjustable pedals.

Performance Features: • 16" Aluminum 5-Spoke Wheels • Improved Steering and Handling • Increased Torque and Horsepower
Comfort Features: • Power Driver's Seat • Heated Mirrors • Light Group • 5-Passenger Seating with Floor Shift
Peace-of-Mind Features: • Power Adjustable Pedals • Advanced Restraint System • Child Friendly Trunk Release System • Dual-Stage 'Smart' Air Bags • SecuriLock™ Anti-Theft • Anti-Lock Brakes

LEASE TAURUS SE
\$289*
PER MONTH
36 MONTH LEASE
\$3,895 Down Payment Plus \$890 Freight and \$350 Security Deposit

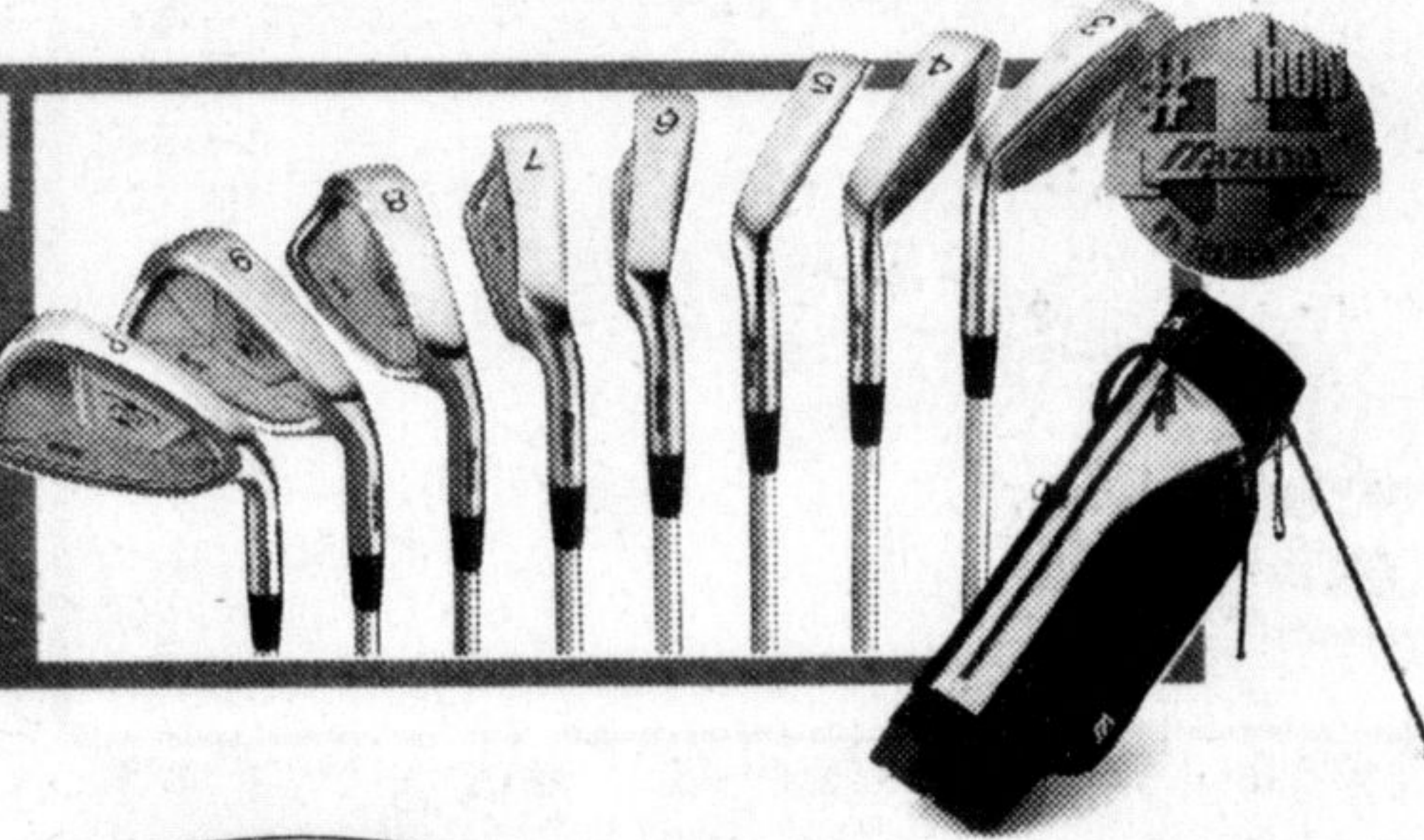
WE HAVE THE RIGHT LEASE PAYMENT FOR YOU
Based on 1.9% annual interest rate over 36 months

TAURUS SE				
Monthly Payment	Down Payment or Equivalent Trade	Security Deposit	Freight	Due on Signing
\$289	\$3,895	\$350	\$890	\$5,424
\$343	\$1,995	\$400	\$890	\$3,628
\$400	\$0	\$475	\$890	\$1,765

First Month's Payment Required. \$0.08/km charge over 60,000 km for 36 months. \$11,283.30 Optional Buyback. Applicable Taxes, Licence, Insurance and Administration Fees Extra.

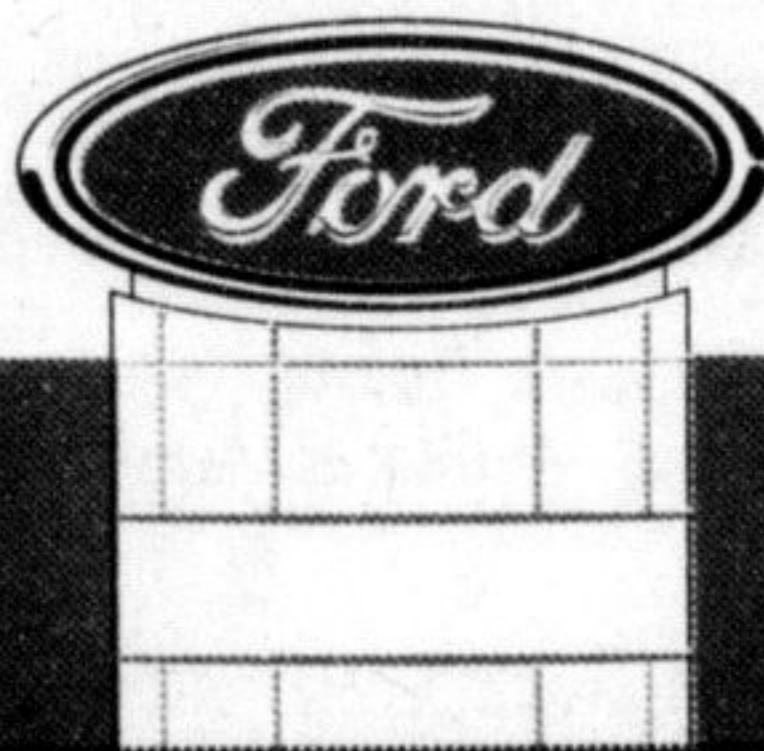
OR FINANCE WITH
2.9%**
48 MONTH PURCHASE FINANCING

NOW EXTENDED UNTIL JUNE 30th!
Buy or Lease any 2000 Taurus and take delivery between now and June 30th, 2000 and receive an 8-piece set of Mizuno T-Zoid™ Irons and golf bag at **NO EXTRA CHARGE††**
Mizuno. The #1 irons on the PGA Tour.



★★★★★
Taurus has earned five stars – the highest possible U.S. government crash test rating for front impact – for both driver and front passenger – two years in a row.††

www.versmartcar.com



YOUR ONTARIO

FORD DEALERS.

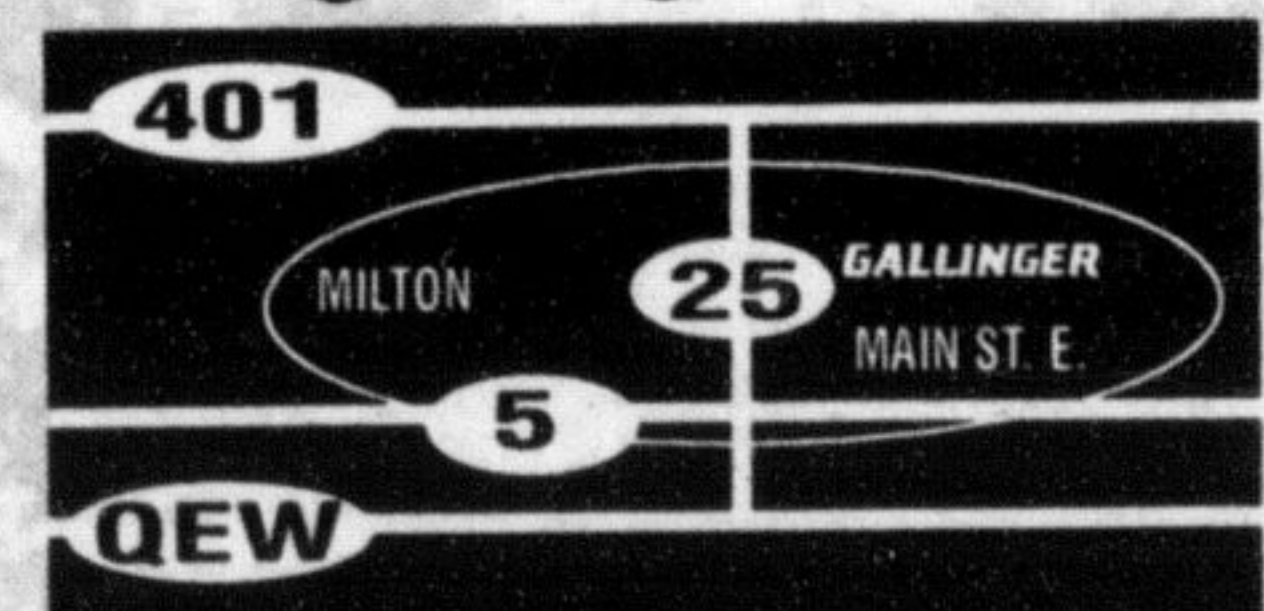
WISE BUYERS READ THE LEGAL COPY: *Lease an in-stock new 2000 Taurus SE Sedan from Ford Credit to qualified retail lessees, on approved credit. Total lease obligation is \$14,299/\$14,343/\$14,440. **2.9% purchase financing available on new 2000 Taurus for a maximum of 48 months on approved credit. E.G. \$25,000 financed at 2.9% annual percentage rate for 48 months, monthly payment is \$552.20, cost of borrowing is \$1,505.60, and total to be repaid is \$26,505.60. Offers do not apply to licence and insurance fees. Dealer may sell or lease for less. Some conditions apply. Offers may change without notice. Limited time offers. Offers are mutually exclusive. Offers cannot be combined with any other offers. See dealers for details. ††Golf club and bag offer only available on in-stock new 2000 Taurus that are retail delivered to and received by the purchaser/lessor on or before June 30, 2000. Fleet deliveries are not eligible. No rainchecks. Offer available at participating dealers only. We reserve the right to substitute golf irons and bag for merchandise of equivalent value. ††The highest frontal impact rating for both the driver and front passenger in U.S. government National Highway Traffic Safety Administration (www.nhtsa.com) testing. †Based on Compuserch CYTD December 1999 new passenger registrations – upper middle segment. Ontario FDA, P.O. Box 2000, Oakville, Ontario L6J 5E4

A Tradition of Value & Trust since 1967 A Tradition of Value & Trust since 1967 A Tradition of Value & Trust since 1967 A Tradition of Value & Trust since 1967 A Tradition of Value & Trust since 1967

A TRADITION OF VALUE AND TRUST!

Get up and go to . . .

www.gallingerford.com



655 MAIN ST. E. MILTON



A Tradition of Value & Trust since 1967

(905) 875-FORD

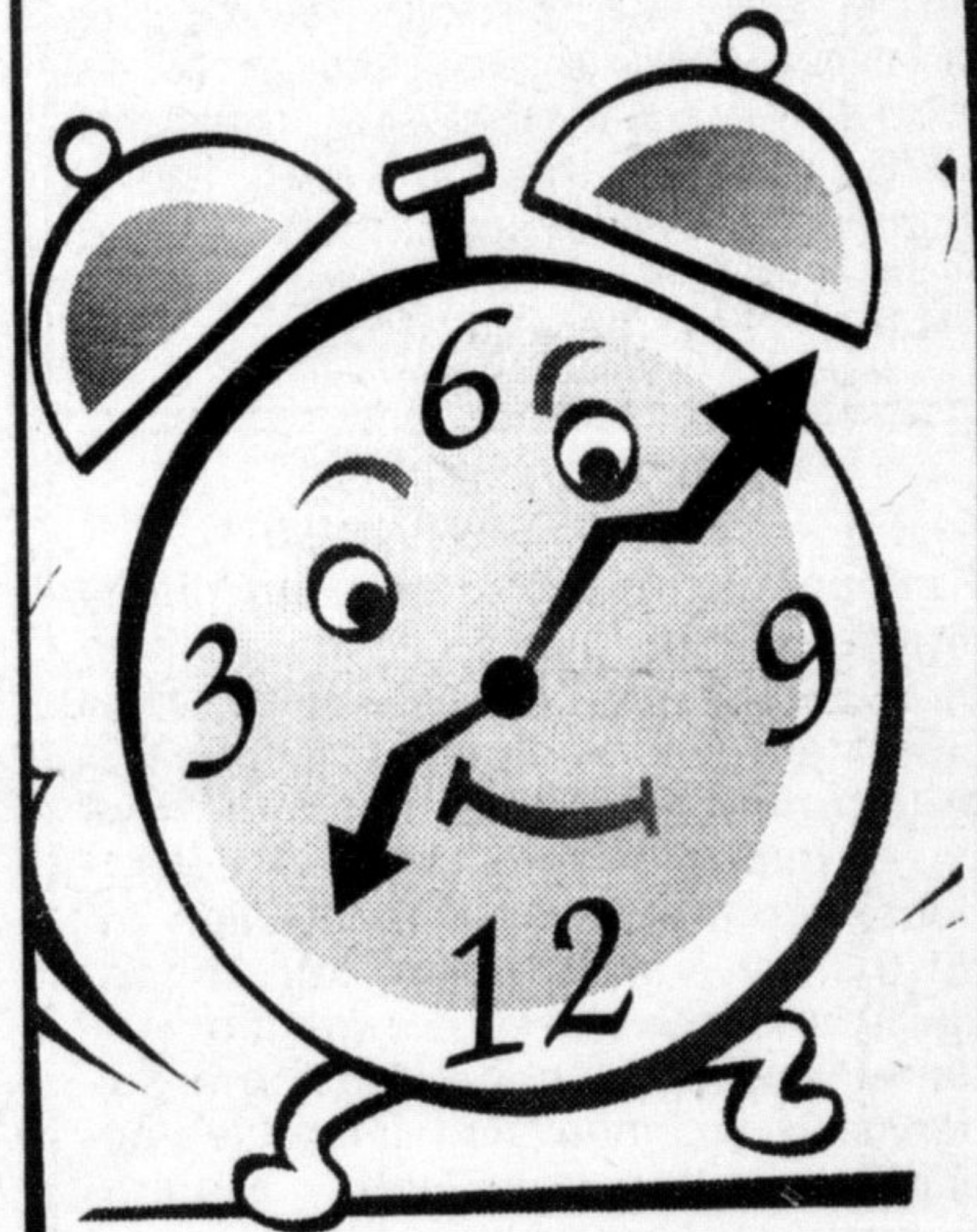
Email greatdeals@gallingerford.com



Ford Motor Company of Canada Limited

A Tradition of Value & Trust since 1967 A Tradition of Value & Trust since 1967 A Tradition of Value & Trust since 1967 A Tradition of Value & Trust since 1967 A Tradition of Value & Trust since 1967

It's Garage Sale Season



To Place your
garage sale ad
call

The
Canadian
Champion
875-3300

MicroLink
distribution

295 Alliance Road Unit 12
875-2449

Look for our
ad on the
back cover of
today's
Canadian
Champion