

A Tradition of Value & Trust since 1967 A Tradition of Value & Trust since 1967 A Tradition of Value & Trust since 1967 A Tradition of Value & Trust since 1967 A Tradition of Value & Trust since 1967

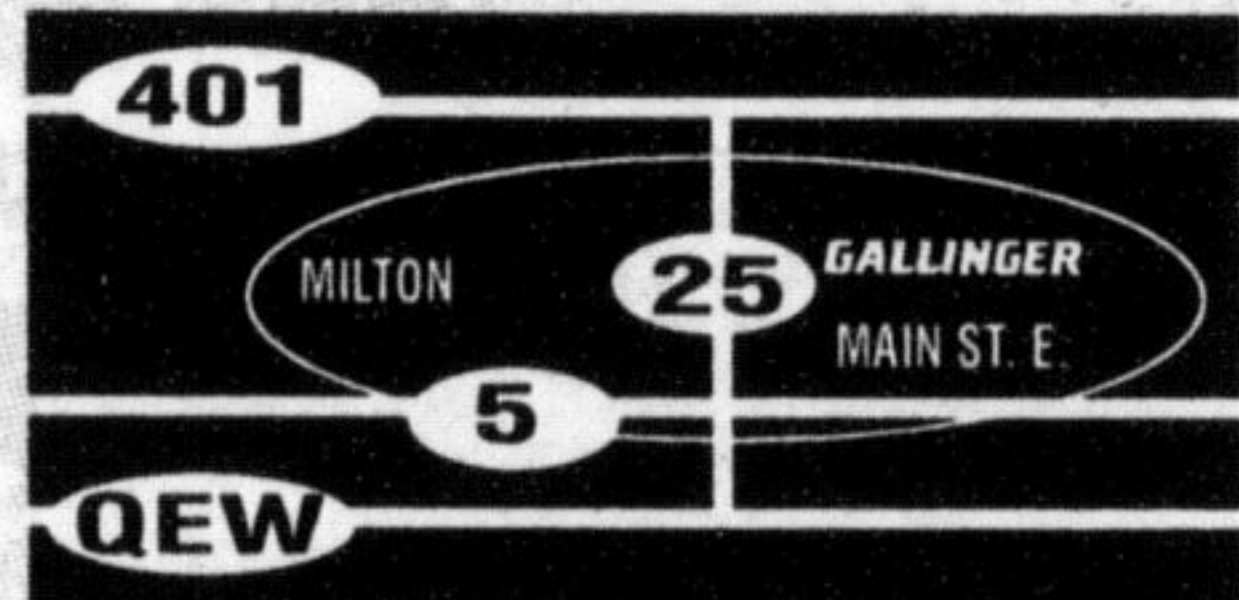
A TRADITION OF VALUE AND TRUST!

Get up and go to . . .

www.gallingerford.com

(905) 875-FORD

Email greatdeals@gallingerford.com



655 MAIN ST. E. MILTON

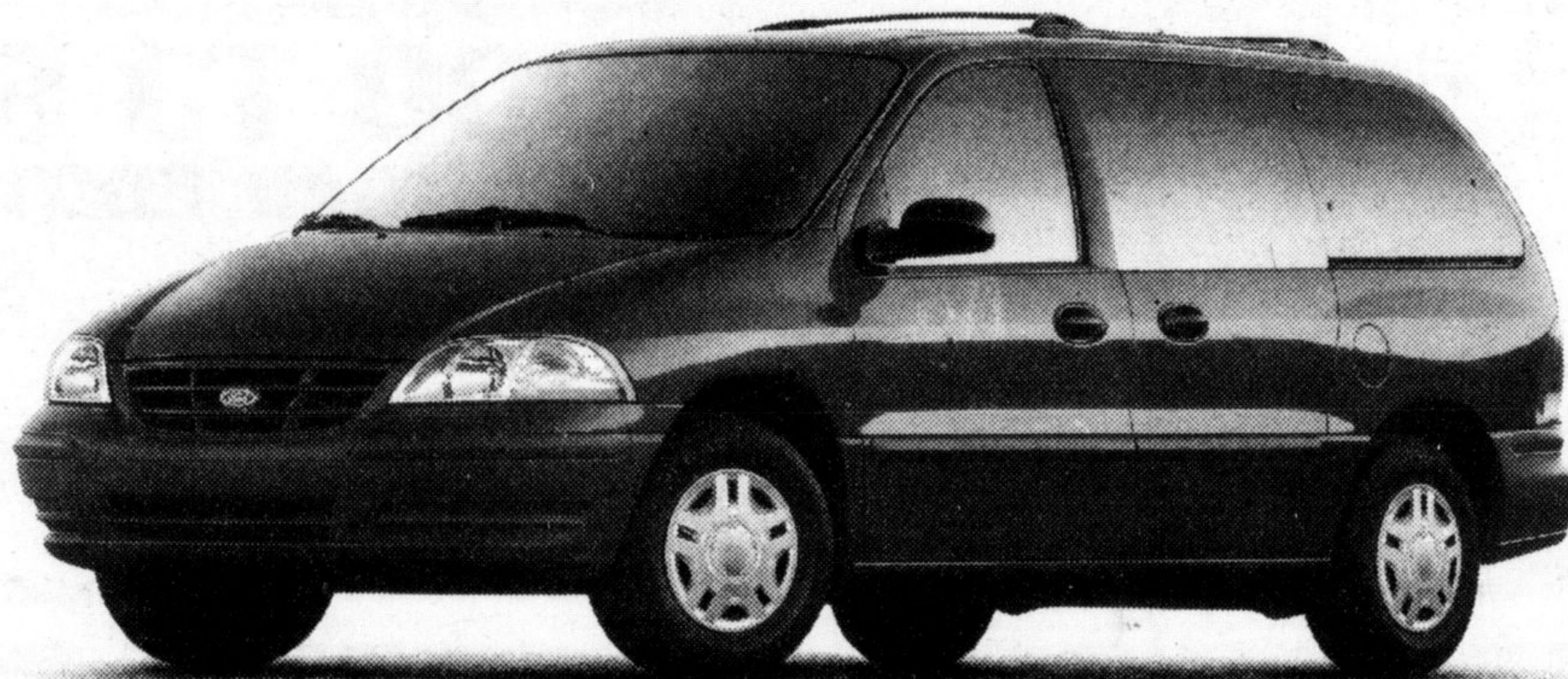
A Tradition of Value & Trust since 1967

Ford Motor Company of Canada Limited

A Tradition of Value & Trust since 1967 A Tradition of Value & Trust since 1967 A Tradition of Value & Trust since 1967 A Tradition of Value & Trust since 1967 A Tradition of Value & Trust since 1967

2000 FORD WINDSTAR LX 4-DOOR

EXTENDED LENGTH COMFORT



The Windstar is the only minivan to achieve a Five Star Crash Test Rating for front impact for driver and front passenger, six years in a row!

COMFORTABLE PRICE

OUR LOWEST LEASE OFFER

\$249*

PER MONTH/36 MONTH LEASE
NO SECURITY DEPOSIT

\$3,850 Down Payment Plus \$945 Freight

OUR LOWEST FINANCING OFFER

0%**

48 MONTH
PURCHASE FINANCING
ON ANY NEW WINDSTAR

ALL THESE GREAT FEATURES INCLUDED AT ONE LOW PRICE

- Extended Length Minivan • Anti-Lock Brakes • 3.8L 200hp V6 Engine • 4-Speed Automatic with Overdrive • 7-Passenger Seating • Dual Sliding Doors • Air Conditioning • Power Windows • Power Locks • Power Mirrors • SecuriLock™ Anti-Theft System • AM/FM Stereo with Cassette • Tilt Steering • Speed Control • Privacy Glass • Luggage Rack • Floor Mats

WINDSTAR LX WITH CONVENIENCE GROUP



ONLY **\$20*** MORE A MONTH

SAME GREAT FEATURES PLUS:
QUAD BUCKET SEATS AND
REMOTE KEYLESS ENTRY



www.ford.ca/offers

YOUR ONTARIO

FORD DEALERS.

WISER BUYERS READ THE LEGAL COPY: *Lease a new 2000 Windstar LX, with Left Hand Sliding Door and Utility Group/2000 Windstar LX with Left Hand Sliding Door, Utility and Convenience Group from Ford Credit to qualified retail lessees, on approved credit. Total lease obligation is \$12,814/\$13,585. First month's payment required. Some conditions and a mileage restriction of 60,000 km over 36 months applies. A charge of \$0.08 per km over mileage restriction applies, plus applicable taxes. **0% purchase financing on new 2000 Windstar for a maximum of 48 months to retail customers, on approved credit. E.g. \$25,000 financed at 0% annual percentage rate for 48 months, monthly payment is \$520.83, cost of borrowing is \$0 and total to be repaid is \$25,000. Offers exclude licence, insurance, administration fees and all applicable taxes. Dealer may lease or sell for less. Some conditions apply. Offers may change without notice. Limited time offers. Offers are mutually exclusive and cannot be combined. Dealer order may be required. See dealer for details. †The highest frontal impact rating for both the driver and front passenger in U.S. government National Highway Traffic Safety Administration (www.nhtsa.com). ‡As compared to a short wheelbase model advertised with most other minivans. Ontario FDI# P.O. Box 2000, Oakville, Ontario L6J 5E4

Landlords reluctant to participate

• from REGION on page 1
munities," said Oakville Mayor Ann Mulvale. "Flexibility gives our staff the best mandate possible."

Burlington Mayor Rob MacIsaac had no problem supporting the motion to revisit the issue, but felt Mr. Taylor's option would ultimately win the day.

"If you don't do it on the basis of need, what other rational basis is there," he asked.

At committee, Halton finance commissioner Joe Rinaldo defended the staff recommendation, saying the need for affordable housing isn't just centred in Burlington.

"We believe the allocation should be close to what we've suggested given the need we have in all four communities," he said.

Before any of the units can be placed, landlords have to agree to participate. So far, they've been reluctant, added Mr. Rinaldo.

"I don't think we're going to get a lot," he said. "That's my own personal opinion."

He suggested that any units refused by the other area municipalities head straight to Burlington.

But Mr. Taylor maintained that first refusal of the majority of units should be offered to Burlington. If the take-up isn't there, they could then be passed over to the rest of Halton.

That made sense to Halton Chair Joyce Savoline. "I think that equal is not necessarily fair. There needs to be some fairness here."

But Oakville Councillor Keith Bird wondered why this program should be treated differently than others in the region.

"If we're going to start allocating programs based on that, we may be heading somewhere we don't want to go," he said.

Today there are more than 4,000 rent geared- to-income units in Halton. The 84 new units are the first to come on board since 1996.



(905) 876-3761
84 Main St. East
Milton



\$10 OFF
Summer
Highlites

your choice cap or foils
valid til May 31/00

Don't forget
"Not Your Average Hair Show"
tickets!