

PINK PETUNIAS

.74¢ A 4 PACK
\$8.48 FOR A TRAY OF 12 PACKS
 REG. \$1.25 EACH

MOTHER'S DAY GERANIUM PLANTER

2 FOR \$20.00
 OR **\$14.99** EACH REG. \$19.99

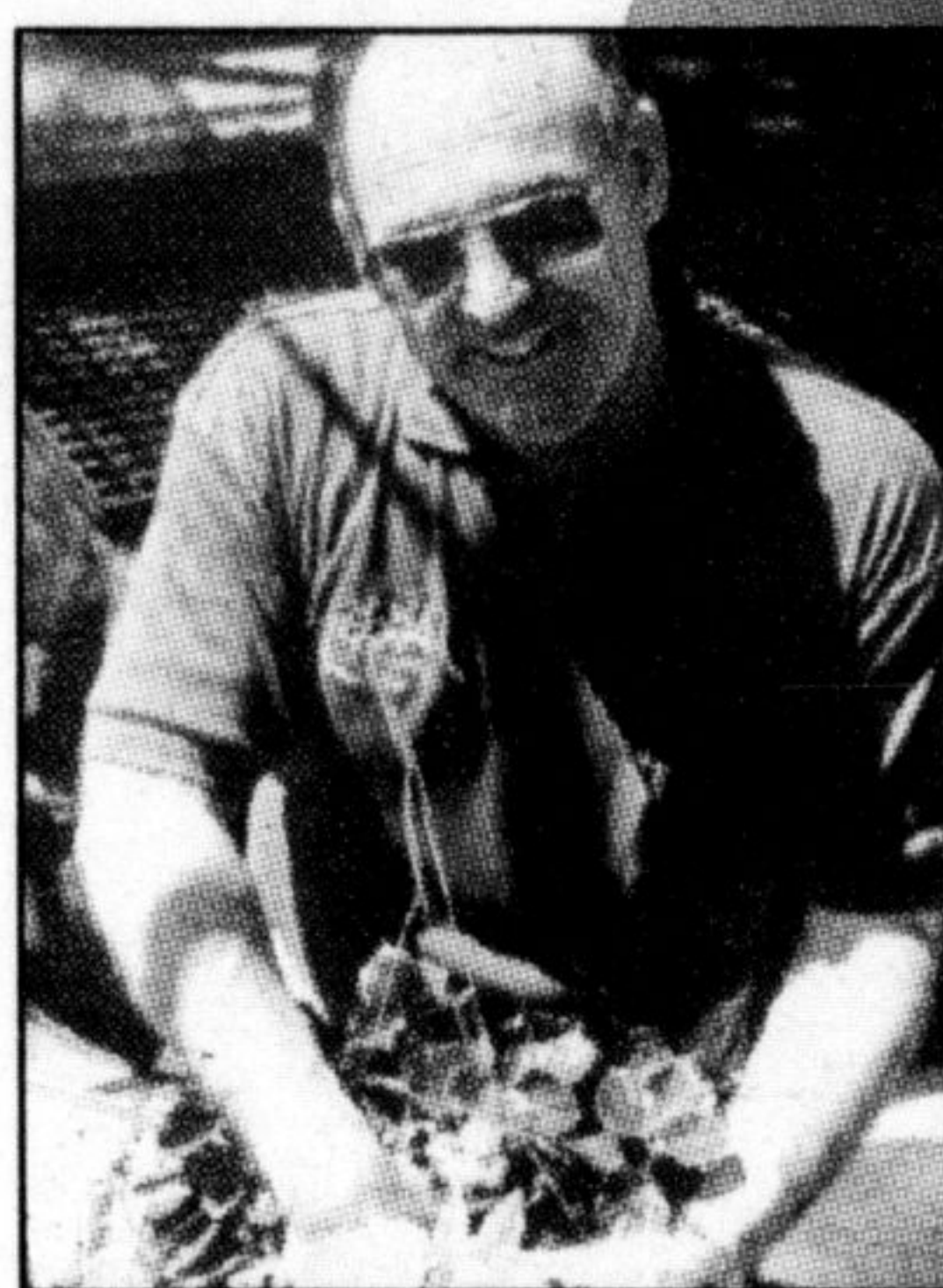
EVERY MOTHER NEEDS COLOUR.

SUMMER SUNSHINE BASKETS

\$8.88 REG. \$14.99

LUSH TOP QUALITY BASKETS

Terra Tips



Geranium Facts By Rene Egesborg Production Grower

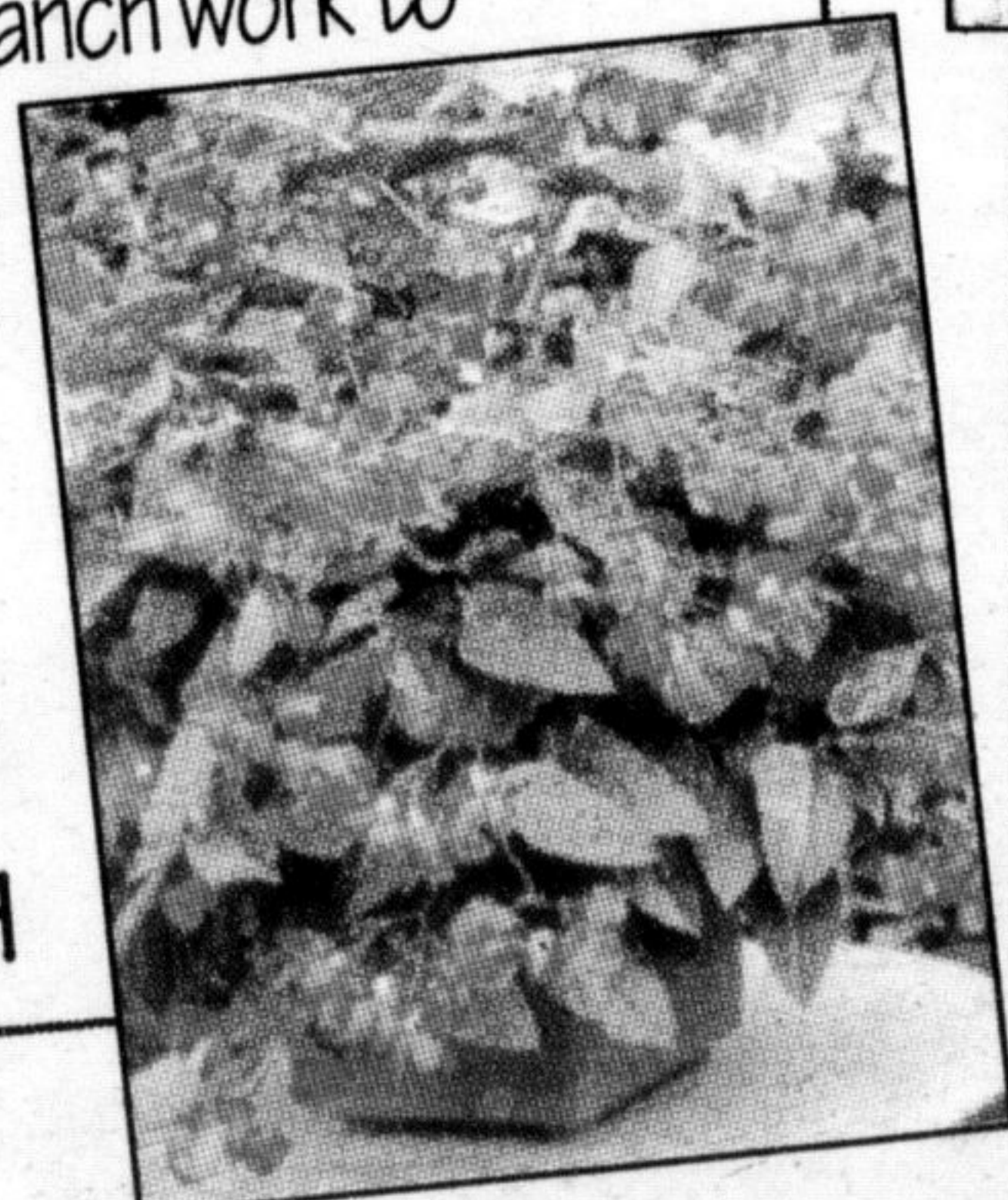
When you get the plants home don't let them dry out

before planting. If you can not plant immediately, place them in a bright location. Geraniums prefer soil that is moist but don't like to be watered over the top of the plant. Ideally the flower, stems and yellow leaves should be removed weekly to avoid fungus. Fertilize every four to five waterings with a 15-30-15 for vigorous growth.

Unique & Different

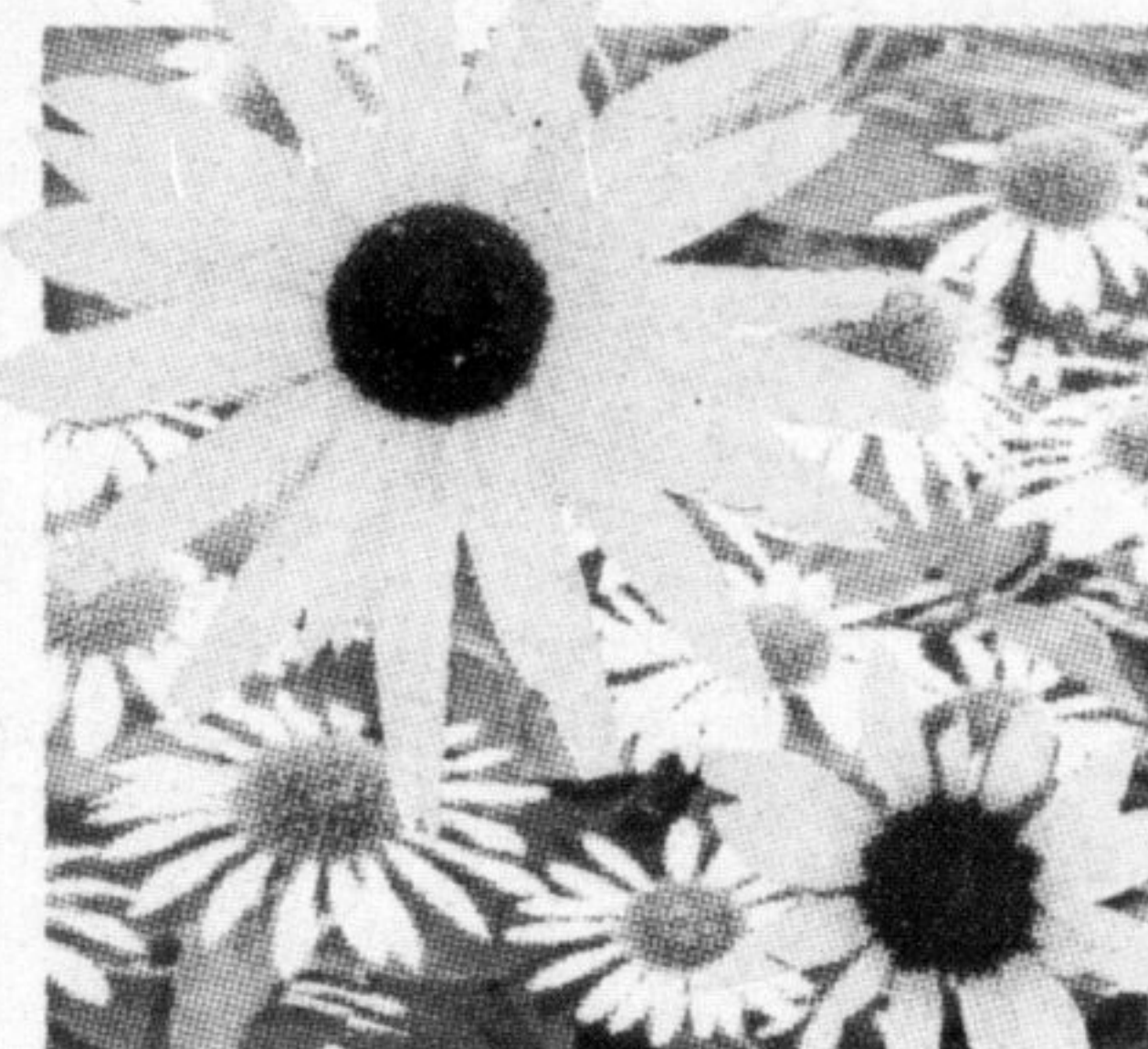
DRAGON WING BEGONIA

New sun loving Begonia thrives well in our hot summers. Fast growing in containers or in the garden. The foliage is large and glossy with strong branch work to handle windy conditions.



\$2.99 EACH

May Everyday Be Mother's Day



PERENNIAL DAISY COLLECTION
5 FOR \$10.00
 OR **\$2.69** EA.
 Rudbeckia, Purple Cone Flower, Shasta Daisy, Coreopsis, Gaillardia, Painted Daisy

ALL JAPANESE MAPLE
30% OFF



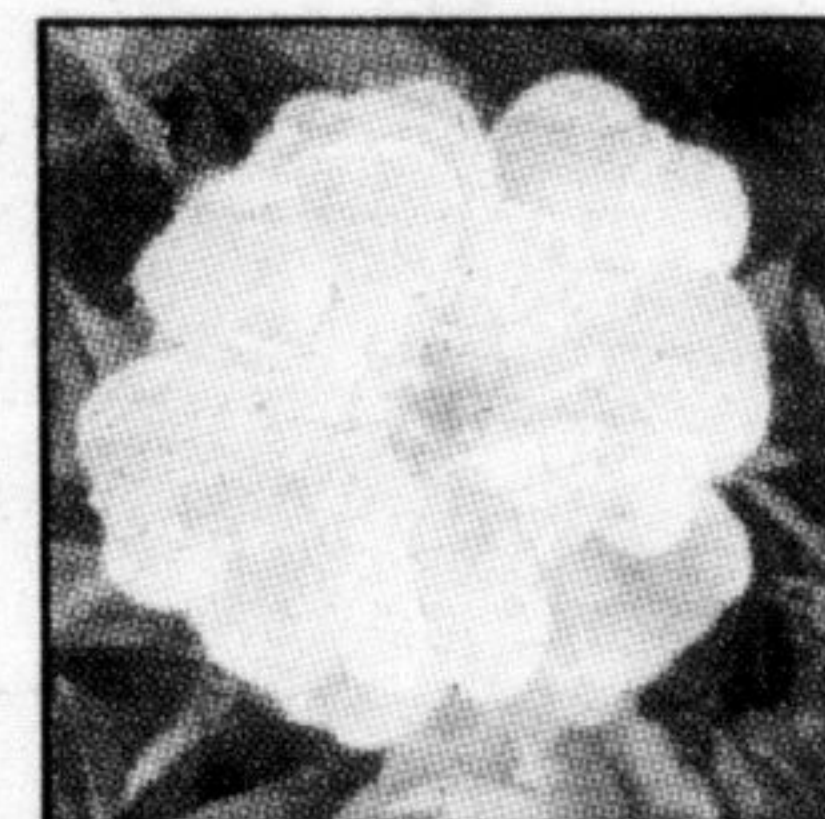
Assorted combinations for sun/or shade



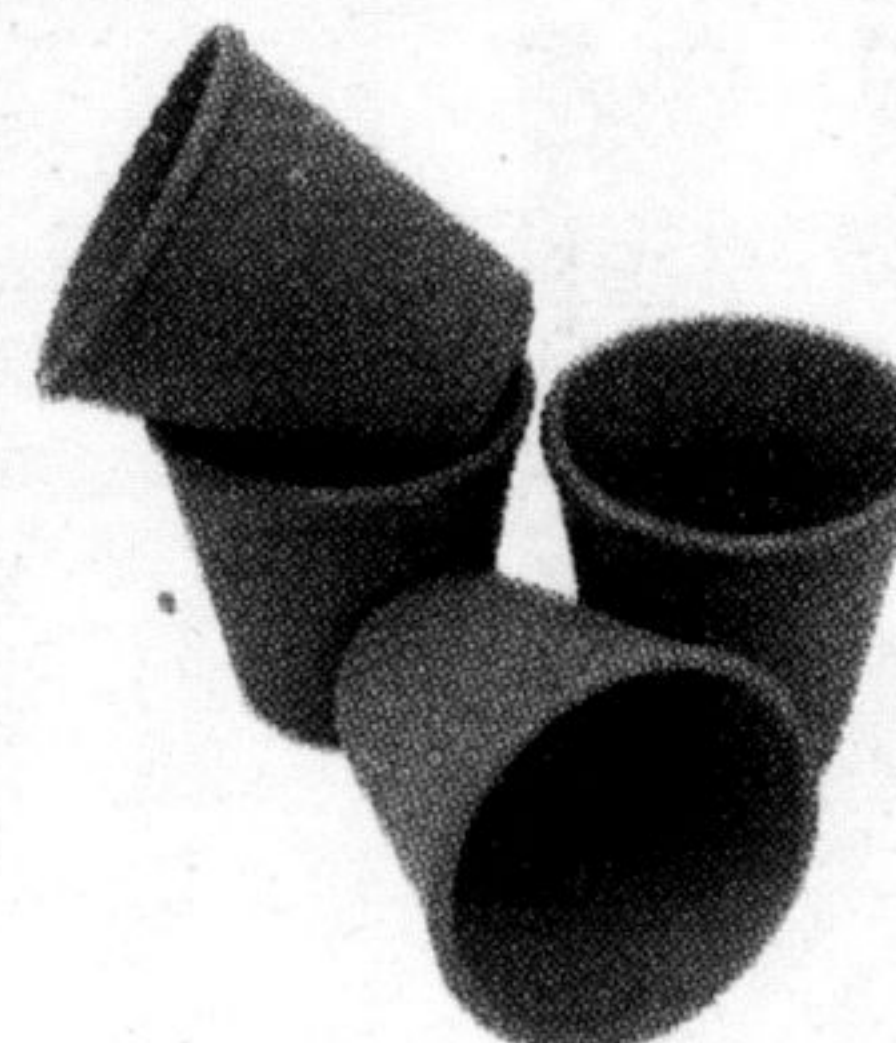
12" PLANTERS
\$19.99 REG. \$24.99
 SAVE \$5.00

NEW TOWN & COUNTRY ROSES 1 GAL. POT

NOW **\$8.99** REG. \$14.99

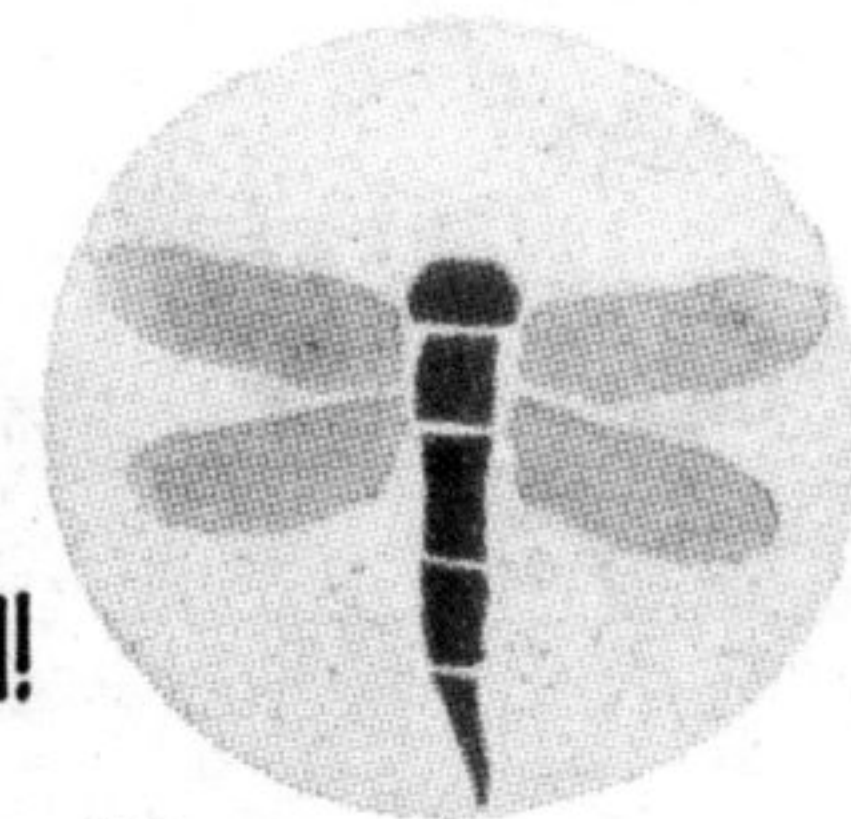


Hardy miniature roses for patio planters for the garden. Flower all summer.



30 CM CLAY ROSE POTS
 NOW **\$4.44** REG. \$8.99
 A GREAT NEW PLANTER LOOK!

STEPPING STONES
30% OFF
 Make Every Step Personal!



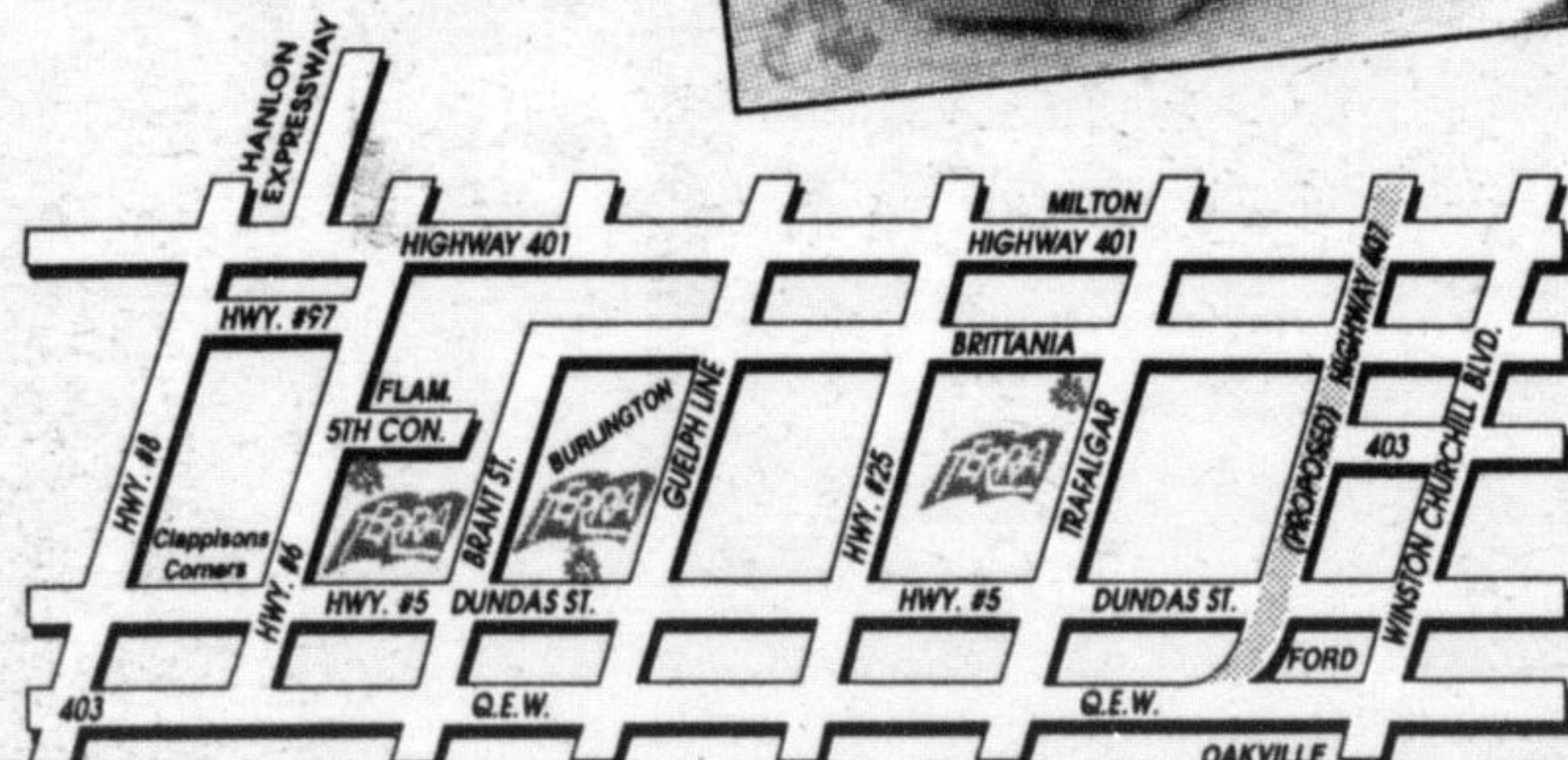
FREE with every \$20.00 or more purchase.



CIL ROSE & PLANT FOOD 5-15-10
 REG. \$9.99

Limit one per family.

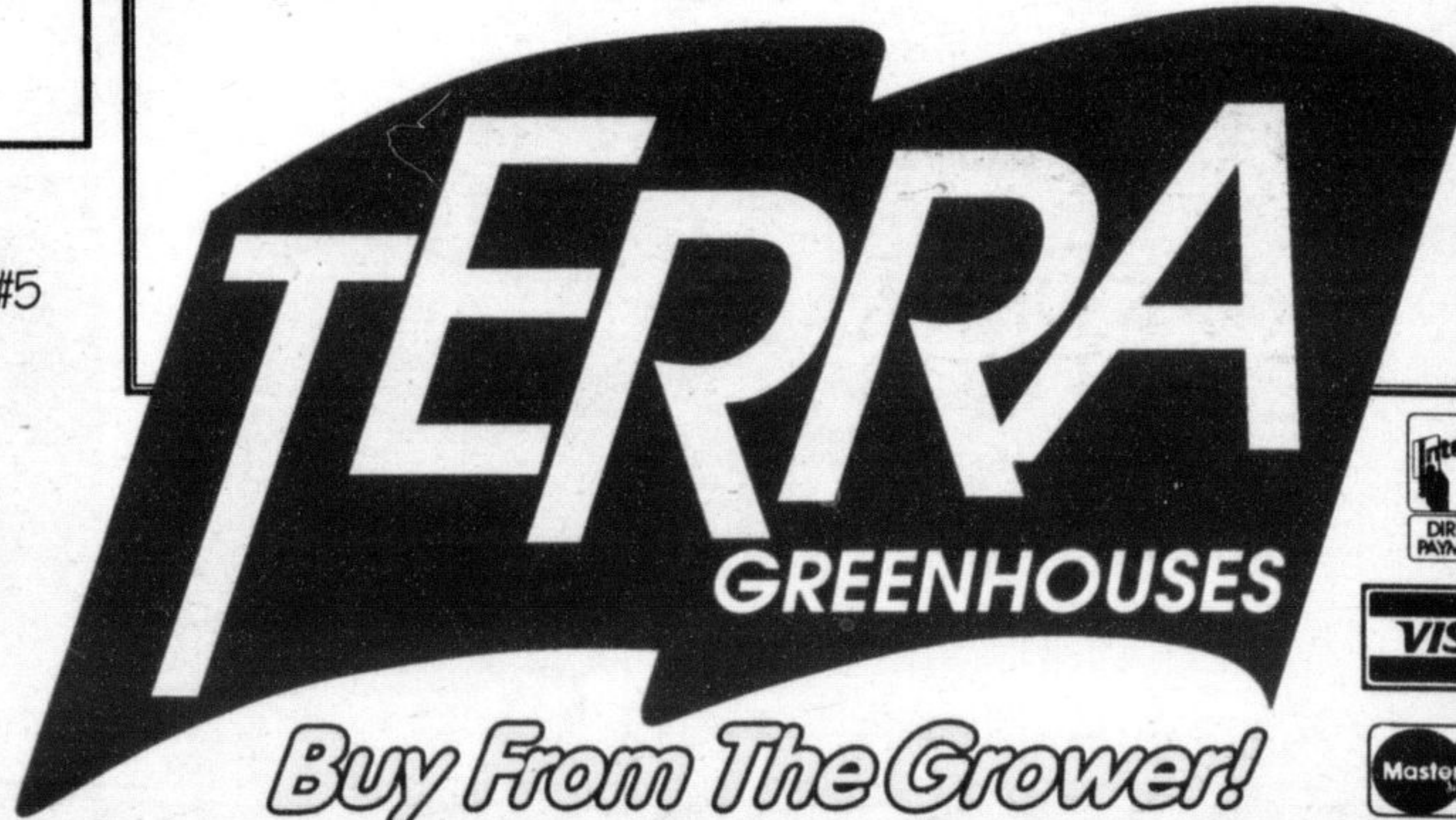
FOR THE FIRST 2000 CUSTOMERS
Mother's Day Gift Certificates



TERRA BURLINGTON
 Serving Burlington, Oakville, & surrounding area located on Hwy. #5 between Brant Street and Guelph Line • (905) 332-3222

TERRA WATERDOWN
 Serving the Golden Triangle & Greater Bay Area, located on the corner of Hwy. #6 at 5th Concession East • (905) 689-1999

NEW TERRA MILTON • NOW OPEN!
 Serving Oakville, Milton & Mississauga, & surrounding area located at Britannia and Trafalgar • (905) 876-4000



MON. TO SAT. 8-9 pm • SUN. 8-6 pm • SALE BEGINS WED. MAY 10 TILL TUES. MAY 16TH 2000