

# MILTON

## The Craft Tree

Come visit the store at its new location



Craft and Art Supplies • Classes  
Spring Classes Starting Soon.  
Call for details

**875-4917**

327 Bronte St. S. Milton, White Oaks Plaza

### HOURS

Mon. - Fri. 9:30 am to 8:00 pm  
Sat. 9:30 am to 6:00 pm  
Starting April 30, SUNDAYS 12 pm to 4 pm



**MICHELIN**

Because so much is riding on your tires.

### LTX M/S

- Premium all-season sport utility and light truck tire
- Exceptional traction and control in wet, dry and snow conditions
- Exceptionally smooth and quiet
- Unrivaled industry leader

### X-ONE

- Ultra-premium all-season touring tire
- Unmatched all-season traction
- 6-year unlimited mileage warranty
- 30-day satisfaction warranty



P235/75R15

**\$134<sup>95\*</sup>**  
+ Tax



P185/70R14

**\$104<sup>95\*</sup>**  
+ Tax

P205/70R15

**\$124<sup>95\*</sup>**  
+ Tax

\*Prices include installation, new valve stem, tire disposal  
We also offer a full range of Mechanical Services

**878-6785**

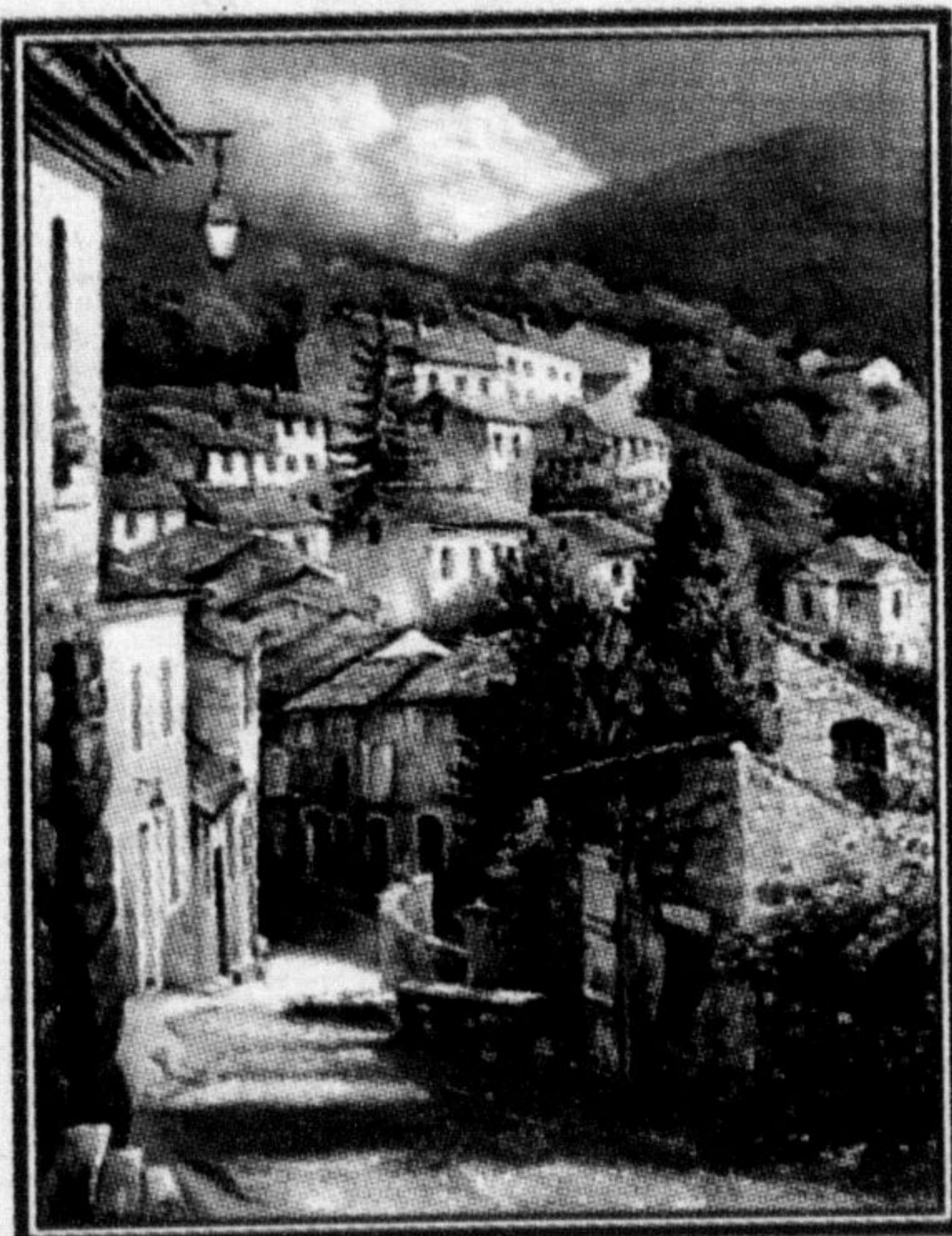


**Milltown Tire Service Ltd.**

675 Steeles Avenue Ave. E. Milton

MILLTOWN TIRE		
ONTARIO ST.	STEELES AVE.	WILSON ST.

## Unique Frame + Art



**SAVE 50% on Custom Framing**

- Custom **Design** Shop
- Quality at the **Best** prices
- Create your own **Unique** Pieces
- **Large** selection to choose from

### HOURS:

Tues.-Fri. 10-6  
Saturday 10-5

**500 Laurier Ave. (A&P Plaza)**

**875-0971**

**\$25/200**  
REALTIME MINUTES

Analog or Digital.  
It's your call.



Digital PCS  
QUALCOMM QCP 2760

**\$49\***

**\$19\***

Analog  
Motorola DPC 650e



\*After mail-in rebate.  
Ask us for details

Product may not be as shown. Some conditions apply. Offer subject to change and/or extension. Limited time offer and while supplies last. Taxes apply. Bell Mobility and Bell World are trade-marks of Bell Canada. Motorola is a trade-mark of Motorola Inc. Qualcomm is a trade-mark of Qualcomm Inc. Only available at Bell World and Bell Mobility locations.

**Wire-Less Connections Inc.**  
377 Main St. E.  
**(905) 878-1113**

