



# Heating & Cooling

103 Steeles Ave., Unit 6 & 7  
Milton, Ontario

## 878-4821

Serving Milton and surrounding communities for over 41 years

**FREE COVER on a P450RSB BBQ\***

Napoleon Barbecues... Canadian made!  
The best barbecue around. Limited lifetime warranty on Prestige models. The last barbecue you might have to buy!

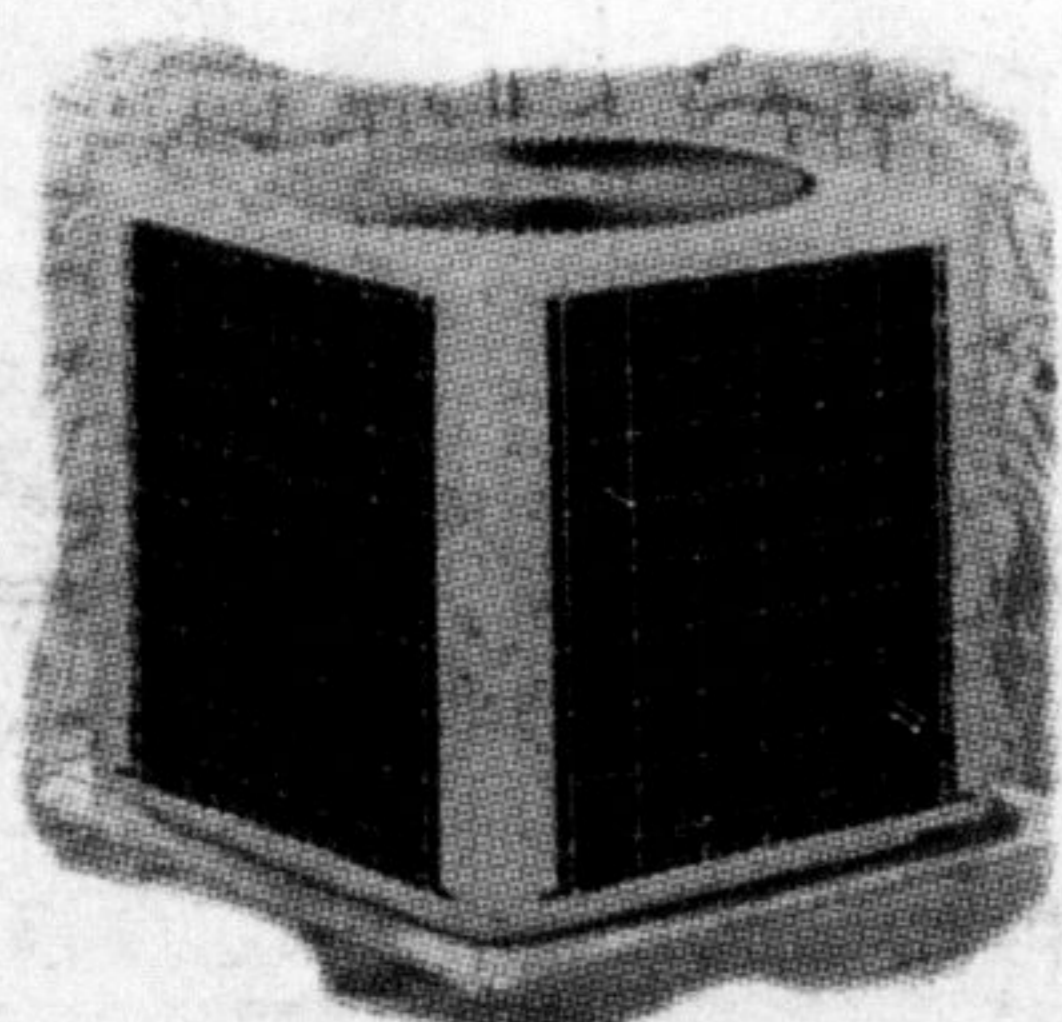


**union**  
energy  
Take comfort



...Summer's almost here...  
...don't delay.....buy now!

Our KSSE model A/C. Scroll compressor. 10.5 SEER + rating. Extremely quiet 2 speed fan. Reasonable price for a premium.



**NEIL**  
HEATING & COOLING PRODUCTS

**FREE**  
5 Year Parts and Labour Warranty on A/C

# Late Christmas break in 2000-2001 school schedule

Classes will start September 5 in the 2000-2001 Halton District School Board calendar.

The calendar, which was recently approved without comment by trustees, will also include another late Christmas break period.

There was a late start and finish to the two-week holiday last Christmas because of concerns over Y2K computer problems. The school return was delayed to January 10.

Next winter's Christmas break involves similar timing, with classes ending Friday, Dec. 22 and resuming Monday, Jan. 8.

Holding the break a week earlier would have prevented a Monday return date, since the January 1

holiday falls on that day.

Other school holidays will include Thanksgiving Day (October 9), Spring Break (March 12 to 16), Good Friday (April 13), Easter Monday (April 16) and Victoria Day (May 21).

Schools will also be closed to students for professional activity/development days on October 6, December 1, February 2 and June 28.

Those days will be used by teachers for activities like communicating with parents about student progress, training on curriculum, assessment/evaluation reporting, course planning/preparation, submission and verification of secondary school marks and numer-

ous other professional activities.

High school exam periods will be January 25 to 31 and June 20 to 26 for semestered schools and June 13 to 26 for non-semestered schools.

The 2000-2001 timetable was developed by the school year calendar committee, consisting of board union and administration officials.

The calendar review also included input from elementary and secondary administrators and teachers, plus consultation with the Halton Catholic District School Board.

The two boards, which share transportation systems, usually match holiday and professional development day schedules.

# Circus coming to fair grounds

The big top will pop up again in Milton.

Sponsored by the Optimist Club, the Starr Bros. Big Top Circus will come to town Wednesday, Apr. 19 at the Milton Fair Grounds.

A special sneak preview will take place at 9:30 a.m. followed by shows at 5 and 7 p.m.

And a giant midway will open an hour before the first show.

Though Milton has had circus shows come through in the past, this will be the first time the Florida-based Starr Bros. has been

in the area.

"They're an old, established circus but I don't think they've been in Canada," said the Optimist Club's Scott Schlotzhauer.

This big top promises to showcase circus events of yore as well of those to come. Its billing promises to return to its roots, reaching back 200 years to the North American birth of the circus.

But it also promises to look to the future.

Clowns and acrobats are featured in the show, but no animal acts.

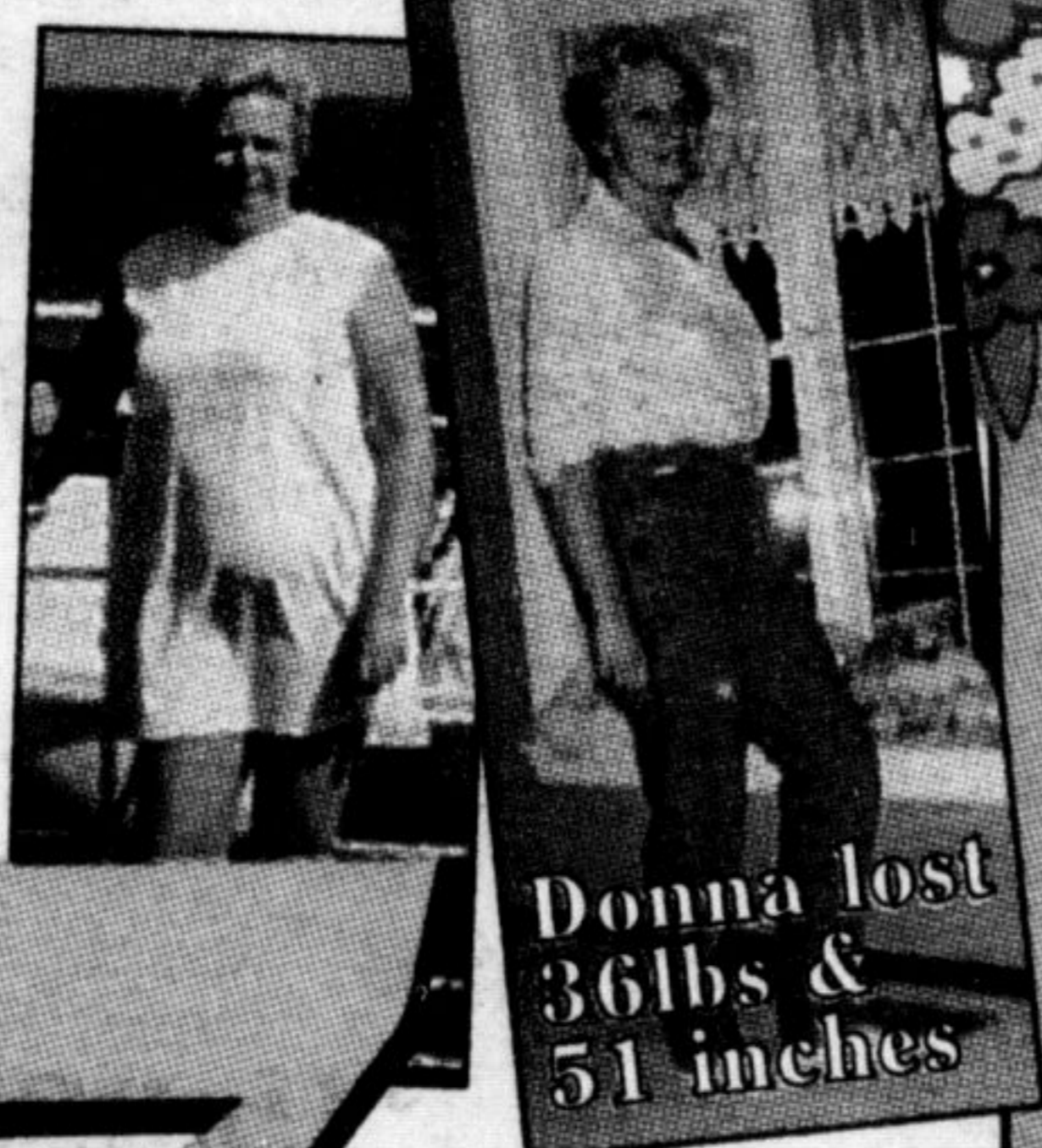
"There may be a horse or two, but no elephants or anything," said Mr. Schlotzhauer.

"And it looks like it's a bigger tent. The other one was a single peak and this one looks like a double peak."

Advance tickets cost \$10 for adults and can be purchased at the Milton Fair Grounds or M&M Meats, or by calling 878-1848. Children aged under 14 years get in free. Tickets will also be available on the day of the event at an increased cost.

# Real People Real Results

- Safe! Easy! All Natural!
- No pre-packaged meals, shakes or shots!
- Guaranteed results!
- FREE No-obligation consultation!



**\$7** per week

Excludes product. Based on full program. Held Over 1 More Week

## Herbal Magic™

Systems International  
Weight Management and Nutrition Centres

the Natural Way to Lose Weight

15 MARTIN ST.  
693-9594

HOURS:  
Monday - Friday  
9 am to 7 pm  
Saturday  
10 am to 2 pm

## The Nissan Enjoy the Savings Event.



### THE 250-HP 2001 PATHFINDER



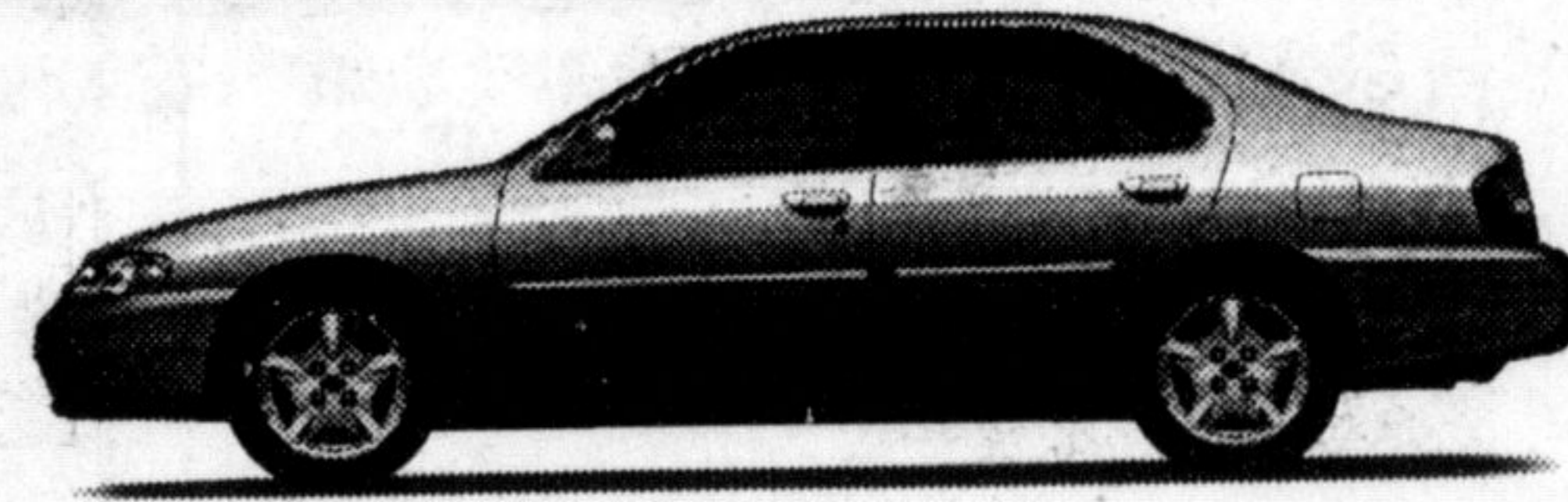
- Power Changes Everything - 250 HP 3.5-Litre DOHC engine • 4-speed automatic with overdrive
- 265 ft-lb torque @ 3,200 RPM • All mode 4-wheel drive (automatic 4-wheel drive selector dial) • Fuel tank skid plate • 16" alloy wheels • Air conditioning
- Bose® acoustically tuned audio system • Upgrade 6-disc in-dash CD autochanger • Power sliding glass sunroof
- And much more...

Pathfinder XE starts at \$34,700  
Pathfinder SE Automatic is only

**\$40,200\*** OR **\$488/mo.**  
for 48 months only \$4,000 down

### 2000 ALTIMA GXE

- 155-Hp 2.4-Litre engine • 100-watt AM/FM CD audio system • 4 speed automatic transmission • Air conditioning • Remote keyless entry system with panic alarm • Dual airbags
- Power windows, mirrors, door locks, trunk release, and more...



get **2.8%** financing OR **LOW LEASE RATES** OR **special cash purchase price \$21,498\***

Altima: "Best Entry Midsize Car in initial Quality in the U.S., 3 out of the last 4 years."

-J.D. Power and Associates

**NORTH END NISSAN**  
610 MARTIN ST. MILTON **878-4137**



Frt. & Taxes extra. See dealer for details on special rate financing and lease offer.