

The Nissan Enjoy the Savings Event.



THE 250-HP 2001 PATHFINDER



• Power Changes Everything - 250 HP 3.5-Litre DOHC engine • 4-speed automatic with overdrive • 265 ft-lb torque @ 3,200 RPM • All mode 4-wheel drive (automatic 4-wheel drive selector dial) • Fuel tank skid plate • 16" alloy wheels • Air conditioning • Bose® acoustically tuned audio system • Upgrade 6-disc in-dash CD autochanger • Power sliding glass sunroof • And much more...

Pathfinder XE starts at \$34,700
Pathfinder SE Automatic is only

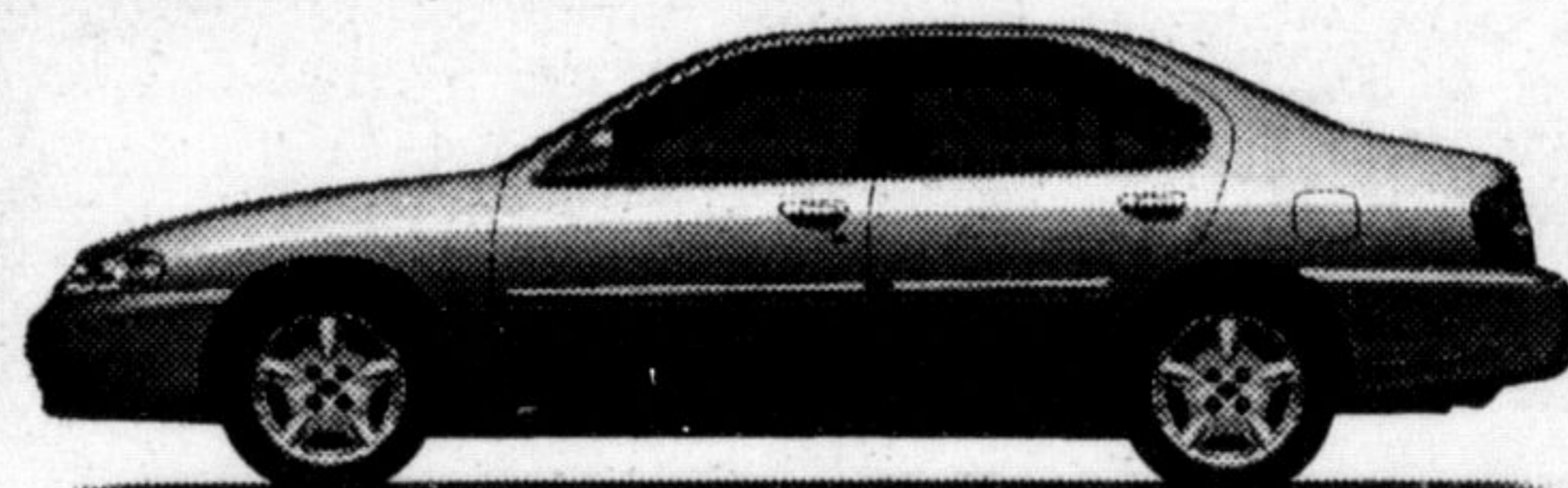
OR

Lease for only
\$488/mo.
for 48 months
only \$4,000 down

\$40,200*

2000 ALTIMA GXE

• 155-Hp 2.4-Litre engine • 100-watt AM/FM CD audio system • 4 speed automatic transmission • Air conditioning • Remote keyless entry system with panic alarm • Dual airbags • Power windows, mirrors, door locks, trunk release, and more...



get **2.8%†** financing OR **LOW LEASE RATES** OR **special cash purchase price \$21,498***

Altima: "Best Entry Midsize Car in initial Quality in the U.S., 3 out of the last 4 years."

-J.D. Power and Associates

NORTH END NISSAN
610 MARTIN ST. MILTON **878-4137**



Frt. & Taxes extra. See dealer for details on special rate financing and lease offer.

Dateline

Dateline is a free listing of coming events only. The column is available to local community groups to assist in promoting their future events. Only charitable or non-profit community groups may use this service. We can only guarantee one issue of publicity closest to the date of the occurrence although more insertions are possible if demand is low.

Notices for Dateline should be handed in at the office of The Champion, 191 Main St. E., mailed to P.O. Box 248, Milton, Ont., L9T 4N9, or faxed to (905) 878-4943. The final deadline is noon Friday for Tuesday's edition and noon Wednesday for Friday's edition. Dateline items will not be accepted by telephone.

Tuesday Apr. 4

Parents experiencing troubles with their children can seek advice at the **Parent Support Group**. This non-denominational self-support group, run by trained leaders, help parents cope with children who may be in trouble in school or with the law, abusive or taking drugs. Meetings are held every Tuesday at 7:30 p.m. at Pinelands Presbyterian Church, 5270 New St., in Burlington. The support group is a member of the Association of Parent Support Groups (APSGO).

The Milton Fibromyalgia Support Group reminds members to meet at 2:00 p.m. at St. Paul's United Church. Contact Joanne at 878-4371 for more information. **The Peel/Halton Cesarean Awareness-**

Vaginal Birth After Cesarean Group meets for support and topical discussions beginning at 7:30 p.m. This month's topic is 'Communication: Before, During and After Labour'. Contact Penny at 873-2779 or Wendy at 891-0793 for further information.

The Nassagaweya Tennis Club hosts its **Annual Registration** at the club through to April 7 from 7 to 9 p.m. and on Saturday from 1 to 4 p.m. The club is located in Campbellville beside the fire station at Highway 401 and Guelph Line. Fees for the season are \$125/family, \$105/adult couple, \$65/ adult single and \$30 for students. For more information, contact Jean Falls at 878-9220 or Donna Duimstra at 854-2521 for membership inquiries.

Wednesday Apr. 5

The Milton Community Resource Centre invites parents and children to join in the **Discover With Me** program. Children aged 3 to 5 years create and learn about the environment with many hands-on activities. Call 876-1244, ext. 12, to register.

The Healing Centre hosts a health lecture entitled **Immune System Support**. Topics include natural approaches for addressing allergies, hayfever and colds/flu, spinal health and herbs. The talk runs from 7 to 9 p.m. at the Healing Centre, 95 Main St. E. The cost is \$6/person or \$10/couple. All proceeds go to the Halton Women's Place. Call 876-0048 to book seats.

E.C. Drury High School presents **see more DATELINE on page 17**

You can't visit A Country Mile just once.

In fact, every time you go into the beautiful store, you'll find something you've never noticed tucked into a corner.

Offering you two floors of unique gifts and beautiful, high-quality furniture, A Country Mile, winner of Milton's Choice Award for Best Gift Shop, has everything you need and want for your home.

A country, warm feel surrounds you as you walk into the store. Apple cider and cookies baked every morning at the store are available to customers as they walk around.

Owned by Kimberly and Glenn English, A Country Mile is a family affair with their dog Bailey greeting people as they walk through the door. The couple just had their first child, Brooke, who will be coming to the store. A Country Mile offers pine and oak furniture, home accessories and gifts, Homestead paints and the Rowe line - an upholstered furniture line which has been available since June.

And, if the customer is looking for something they can't find, staff will find it for them.

Customer service is first priority to both staff and the Englishes.

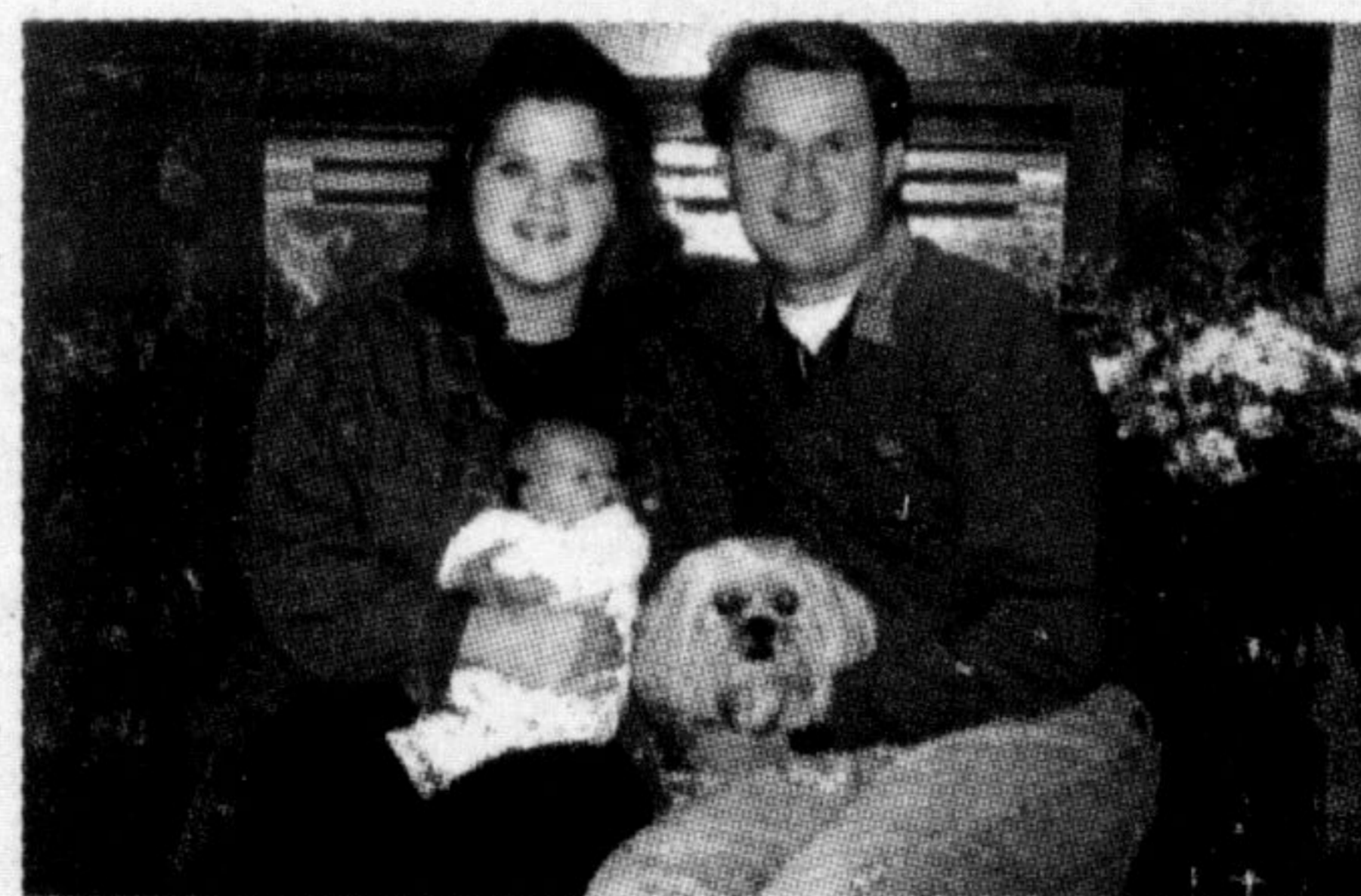
"People feel comfortable coming here. It's an enjoyable experience for sure."

A Country Mile has expanded. The couple recently opened another store located in a heritage home in Burlington.

In Milton, A Country Mile is located at 265 Main St. E. For details call 878-1070.

In Burlington, the store is located at 518 Brant St. For details call 631-9885.

A COUNTRY MILE



Furniture, Home
Accessories & Gifts
Open 7 Days a Week

Kimberly and Glenn English & staff are honoured to be voted "Milton's #1 Giftstore". Thank-you to all our customers.

♥ New this year is the successful launch of a new upholstered furniture line. Overstuffed, comfortable, casual living with over 700 fabrics. Come check it out!

♥ Next, we have opened a second store on Brant St. in Downtown Burlington. An old restored Heritage Home allows us to show the "Whole Home" concept. Not to be missed if you make it to Downtown Burlington.

♥ And recently we are pleased to announce the birth of our first child, Brooke Victoria, born March 6, 2000. Both Mom & Brooke are healthy & adjusting well.

♥ Next time you come to Downtown Milton, be sure not to miss our large store in Carriage Square, right beside Shoppers' Drug Mart. We strive to have something for all.

♥ Thanks again Milton. We look forward to continuing to meet & exceed your gift and home furnishing requirements for years to come.

Kimberly, Glenn, Brooke & Bailey

♥ 265 Main St. E. Milton 905-878-1070

♥ 518 Brant St. Burlington 905-631-9885

